

# The SAGE

The Newsletter of SAGE of South Florida

November 2019

## HAPPY THANKSGIVING

Thanksgiving. A time for family celebration. Yet, sadly, many members of our LGBTQ community “of a certain age” who have retired to South Florida find themselves geographically, and often emotionally, distant from their families.

Several years ago, **Armistead Maupin** wrote a memoir entitled *Logical Family*. Mr. Maupin explains in the book how his “biological family” was slowly replaced by friends and acquaintances to form a “logical family”. He explains how his “logical family” provides the emotional support and understanding he fails to receive from his biological family.

For many of our members, SAGE has become their “logical family”. They have participated in the numerous social and educational experiences SAGE offers and become acquainted with like-minded individuals. They have nurtured these acquaintances to form deep and meaningful friendships which extend beyond the confines of SAGE-sponsored activities.

How gratifying it is to see how the array of our SAGE activities enriches the lives of our members. How thankful we all should be for the amazing volunteers who so willingly donate their valuable time and energy. And how proud we should all be of our SAGE which continues to thrive after twenty-five years as the premier provider of social and educational programs for the mature LGBTQ population of South Florida.

**Henry David Thoreau** wrote, “*I am grateful for what I am and have. My Thanksgiving is perpetual.*” Remember to take a moment during this holiday season to consider how SAGE adds to the quality of your life. Be thankful for your acquaintance and friendship with your fellow SAGE members. Reflect on what you have endured and what you have achieved. Always be grateful for what you are and what you have. Make your Thanksgiving perpetual. Don’t celebrate Thanksgiving only on the fourth Thursday of November. Celebrate it every day of the year.



---

See the enclosed special supplement - *SAGE CELEBRATES 25 YEARS*

## SAGE BIRTHDAYS FOR THIS MONTH

The SAGE Board would like to acknowledge the following members whose birthdays are this month as well as any other member whose birthday that we don't have.  
If, when you renewed your membership or became a new member you did not give us your birthday, you may call the office and leave the information at 954.634.7219 or e-mail us @ sagesofl@gmail.com.

First Name	Last Name	Birthday	First Name	Last Name	Birthday
ED	LUISI	Nov-04	MIKE	PETERSON	Nov-23
JIM	FISHER	Nov-11	RICHARD W	GREEN	Nov-24
JOHN	COLAVECCHIO	Nov-18	DAVID	STAMPS	Nov-24
STEPHEN	SHAW	Nov-19	MARK	SCHWARTZWALD	Nov-28
ROBERT J	LORD	Nov-20	JOHN	BOLTON	Nov-29
CHARLIE	FREDRICKSON	Nov-22	HARVEY	HOFFENBERG	Nov-29
CAROL	CLARK	Nov-23			

### 10 Year Anniversaries

RICHARD WERNER

### New Members

JANYCE FORSTER, MICHAEL MILLS

*If you have had an anniversary with SAGE for either 5, 10, 15 or 20 years and you have not received your pin, please call the SAGE office (954.634.7219) to pick it up.*

## SAGE OF SOUTH FLORIDA

### OFFICERS

President:	Patrick S. Vida
Vice President:	Carl Barton
Secretary:	Ken Goodman
Assistant Secretary:	Michael Vita
Treasurer:	Allen Churchman
President Emeritus:	Carl M. Galli

### BOARD MEMBERS AT LARGE

John Chandler	Marilyn Lamkay
Lee Lawson	Kathy Macchio
Sal Orlando	

**VOLUNTEERS** Jean Arthurton, Judith Bowling, Hank Brooks, Frank Cavanaugh, Philip Collier, Marc Flanagan, Jean Johnson, Caroline Leto, Gene Majka, Sonny Miller, Ken Moore, Frank Piasecki, Ann Smith, Richard Werner, Norma Wingo

**SAGE MISSION STATEMENT** SAGE of South Florida is a non-profit organization for Senior Action in a Gay Environment to enrich the lives of the GLBT senior community through membership inclusive of age, gender, race, nationality, and religion. We believe this can be accomplished by sponsoring social alternatives, by providing personal interaction, offering educational opportunities to deal with the special needs of aging, and by promoting contact with the isolated and home-bound persons of our community. SAGE is also an advocate for the concerns and needs of the senior community at large, providing referral information on community resources and promoting inter-generational communication in the GLBT community. SAGE was founded in 1994 as a Florida "not for profit" corporation (Federal Tax-Exempt Status of 501 (c) 3, allowing tax-deductible donations).

**SAGE EDITORIAL POLICY** SAGE welcomes contributors to the newsletter. An author may request their entry be "anonymous". However, the submission, as received by SAGE, must be accompanied by the full name and address of the author. Items will be published at our discretion, and such publication does not constitute endorsement by SAGE of South Florida. If we feel that we cannot publish a submission anonymously, we will contact the author. We reserve the right to edit articles for length, clarity, or standards of decency. We do not accept paid ads in the newsletter.

**Email to Editor:** [sagesofl@gmail.com](mailto:sagesofl@gmail.com)  
Attn: Editor  
**Mailing Address:** SAGE of South Florida  
PO Box 70516  
Oakland Park, FL 33307

**Website:** [www.sagewebsite.org](http://www.sagewebsite.org)  
**Facebook:** [www.facebook.com/SageOfSouthFloridaInc](http://www.facebook.com/SageOfSouthFloridaInc)

Contents Copyright © 2019 SAGE of South Florida, Inc. All Rights Reserved (Except excerpts, under their own protections).

## REGULARLY SCHEDULED SAGE-SPONSORED ACTIVITIES

### THE ROUND TABLE

This CoEd group, sponsored jointly with The Fort Lauderdale Prime Gentlemen, meets to discuss contemporary topics and ideas from **2:30-3:30pm** on the **second and fourth Mondays of each month in Room 206 of The Pride Center**. Sessions have a moderator who presents a brief background on the discussion topic chosen for the session.

The topic scheduled for November 11th is *Let's Talk About Sex*, presented by Michael Vita. **DUE TO THE THANKSGIVING HOLIDAY, THERE WILL BE NO MEETING ON NOVEMBER 25th.** Please email Ed Slough at [WILDHYBRID@aol.com](mailto:WILDHYBRID@aol.com) if you would like to be on the mailing list to receive notice of upcoming topics and background material for the sessions.

### SAGE WOMEN'S LUNCH

All women are welcome at SAGE Women's Lunch, **every 2nd Thursday of the month**, at the **Golden Corral, 7401 Commercial Blvd., Tamarac 33319 at 12:00 Noon**, to meet, greet, eat, and discuss current happenings. **Membership is encouraged after the second visit.**

This is a 'women only' SAGE event. SAGE has many other co-ed activities for women to enjoy and take advantage of, such as computer classes, a book club, a Round Table discussion group, and SAGE on the Border which meets at the Volen Center in Boca Raton. We're looking for a few good women. Come join our friendly family. **SAGE WANTS TO OFFER MORE ACTIVITIES FOR OUR WOMEN. POT LUCK DINNERS? THEATRE PARTIES? BRING US YOUR IDEAS AND SUGGESTIONS!**

Contact Kathy at [kmbadabing@gmail.com](mailto:kmbadabing@gmail.com) for more information.



### SAGE ON THE BORDER/ ALTERNATIVES

Caroline Leto & Frank Piasecki

This Co-Ed discussion group meets **every Monday from 11:00 am to 1:00**

**pm, at The Volen Center, 1515 W. Palmeto Park Rd., Boca Raton 33486.** Everyone is welcome. No reservations are needed. (Please call The Volen Center at 561-395-8920 to assure the Center is open as it is closed on most Legal Holidays.)



### SAGE LUNCH & LEARN

Lunch and Learn is held the **first Saturday of the month, 12:30pm**, at the Herb Skolnick Community Center.

**RESERVATIONS ARE REQUIRED.** Please see the enclosed flyer for more information.



### SAGE MEN'S NIGHT OUT

John Chandler

If you are a man who enjoys the company of other men, then we have an evening for you.

**Every 4th Monday of the month**, SAGE Board member John Chandler co-ordinates an evening of cocktails, dinner, lively conversation, and meeting and making friends begins with drinks. **We are now meeting at TROPICS GRILLE, 2000 Wilton Drive, Wilton Manors at 5:30pm** for drinks, followed by dinner at **6:30pm. PLEASE NOTE THE TIME CHANGE.** For more information, or if you have any questions, please contact John at 954-933-2963 or Email him at [johnchandler436@aol.com](mailto:johnchandler436@aol.com).



### SAGE COMPUTER CLASS

Ken Goodman

By popular demand the SAGE Computer Class has begun teaching a full course, **"Windows 10 for Seniors"**, which meets weekly to help you learn the basics of Windows 10.

Although instruction has begun and enrollment is closed, watch for announcements of future course offerings. If any of you would still like to review what's happening in the tech world and have your questions answered, contact **Ken Goodman** at [kennyg1944@outlook.com](mailto:kennyg1944@outlook.com). If there is enough interest, we will also schedule sessions to address these topics.

### SAGE BOOK DISCUSSION GROUP

Philip Collier

Where **Augusten Burroughs'** earlier works concerned themselves with his upbringing (*Running with Scissors*), his alcoholism and his place in the world, *Lust and Wonder* focuses largely on the author's quest to make sense of his romantic history. We follow him through two decades' worth of relationships, outlined in the kind of painstakingly neurotic detail only a master can deliver. Burroughs' drive to discern where his self begins and his partners' ends is an endeavor recognizable to anyone who has ever been coupled up. The reader gets the sense that this is an especially difficult proposition for Burroughs, however, as he is exceptionally good at honing in on both his own and others' flaws. The result is a biting funny narrative that takes no prisoners.

Please consider joining the SAGE Book Group In a discussion on **Saturday, November 9, 2019 at the Stonewall Library, 1300 E. Sunrise Blvd., Ft. Lauderdale from 11:00am to 12 noon.** All are welcome – no reservation is required.





# SAGE Gets Around



***SOBA Luncheon at the Outback Steakhouse in Boca Raton***



***Men's Night Out at Tropics Grille in Wilton Manors***



***Lunch and Learn at the Skolnick Center in Pompano Beach***



***SAGE/Prime Gentlemen Round Table at The Pride Center in Wilton Manors***



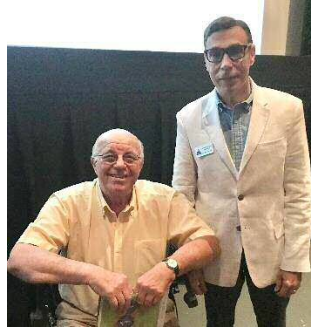
**JOHN HASANDRAS** receives his 5-Year Anniversary Pin



**RICHARD WERNER** receives his 10-Year Anniversary Pin



## SAGE at Outshine Film Festival



## SAGE Book Group *skypes* with author Robert W. Fieseler



Photos contributed by Allen Churchman, Rex Coston, Gene Majka, and others.  
View more photos by visiting our Photo Gallery at our Website: [www.sagewebsite.org](http://www.sagewebsite.org).



# SAGE of South Florida Celebrates 25 Years



In 1992 the Sunshine Cathedral MCC assigned Ed Jones to explore ways to develop and expand its programs for senior-age church members. At a meeting on March 22, 1994 a task force was formed which included members of the newly formed Community Center. They consulted with the New York gay advocacy group SAGE and determined it best to establish a community-wide organization independent of the church. Planning meetings were held on April 5<sup>th</sup> and 12<sup>th</sup>, and a “kick-off” luncheon was held at the *Garden Restaurant* to ascertain interest. 159 tickets were sold. Attendees were asked to complete a survey to ascertain interest in proposed activities. A steering committee was formed and met on June 14<sup>th</sup> to analyze survey responses. At subsequent meetings of the task force, six committees were created: Social Activities; Organizational; Phone Communications; Volunteer Services; Newsletter and Publicity; and Educational Programs. On June 20, 1994 a “SAGE Page”, which reported the progress and development of SAGE of Broward County, was printed and mailed to 350 people. A second luncheon was held at *Tropical Acres Restaurant* on July 24<sup>th</sup>, 1994. The six committees gave presentations to an audience of 250 individuals. Subsequently, Articles of Incorporation for the not-for-profit corporation, **SAGE of Broward County, Inc.**, were filed and the inaugural issue of *The SAGE* newsletter was published. A charter membership campaign began at a luncheon held at *Tropical Acres Restaurant* on September 18<sup>th</sup>. A total of 322 charter members had joined by December 31, 1994. As the scope of the organization’s programs expanded geographically, the name was changed in 2003 to **SAGE of South Florida**. Today, **SAGE of South Florida** is both the second largest and second oldest of **SAGE-USA’s** thirty national affiliates.



SAGE Founders at Kick-Off Luncheon, May 21, 1994

*George Hymowitz, Paula Davi, Chuck Donovan, Ken Fountaine*

## ***The SAGE – November 2019 -25<sup>th</sup> Anniversary Supplement***



# CITY of WILTON MANORS Proclaims September 22, 2019

## *SAGE OF SOUTH FLORIDA DAY*



***[left to right] Vice Mayor and SAGE member TOM GREEN; Commissioner JULIE A. CARSON; SAGE President PATRICK S. VIDA; Mayor JUSTIN S. FLIPPIN; Former SAGE President JEAN JOHNSON; Former SAGE President and current SAGE Secretary KENNETH GOODMAN; Commissioner PAUL ROLLI***

***WHEREAS, SAGE (Senior Action in a Gay Environment) of South Florida is a nonprofit organization that enriches the lives of the LGBT+ senior community in Broward and Palm Beach Counties through membership inclusive of age, gender, race, nationality, and religion; and***

***WHEREAS, Sage of South Florida sponsors social alternatives by providing personal interaction; offering educational needs to deal with the special needs of aging, and by promoting contact with the isolated and homebound persons of our community, and***

***WHEREAS SAGE of South Florida is an advocate for the concerns and needs of aging, and by promot8ing contact with the isolated and homebound persons of our community; and***

***WHEREAS, SAGE of South Florida is an advocate for the concerns and needs of the senior community at large, providing referral information on community resources and promoting inter-generational communication in the LGBT+ community; and***

***WHEREAS, the Articles of Incorporation for SAGE were accepted by the Florida Secretary of State of August 8, 1994; and***

***WHEREAS, SAGE (Senior Action in a Gay Environment of South Florida is celebrating its 25<sup>th</sup> Anniversary of serving the South Florida LGBT+ community.***

***NOW, THEREFORE, BE IT PROCLAIMED BY THE CITY OF WILTON MANORS that September 22, 2019 be designated as:***

***SAGE OF SOUTH FLORIDA DAY in the City of Wilton Manors.***

***The city further calls upon residents and neighbors to congratulate SAGE of South Florida on its anniversary and thank them for their service to our community.***

***The SAGE – November 2019 -25<sup>th</sup> Anniversary Supplement***



# SAGE 25<sup>th</sup> Anniversary Celebration

## Pelican Grand Beach Resort



For more pictures, go to SAGE Website – [www.sagewebsite.org](http://www.sagewebsite.org) – click on the Program tab and SAGE 25<sup>th</sup> Anniversary

*The SAGE – November 2019 -25<sup>th</sup> Anniversary Supplement*



# SAGE 25<sup>th</sup> Anniversary Celebration

## Pelican Grand Beach Resort



For more pictures, go to SAGE Website – [www.sagewebsite.org](http://www.sagewebsite.org) – click on the Program tab and SAGE 25<sup>th</sup> Anniversary

*The SAGE – November 2019 -25<sup>th</sup> Anniversary Supplement*



## SOCIAL LITES *Sal Orlando*



Boy, I'm enjoying this beautiful fall weather. I can't believe the holidays are upon us already. How time flies when you're having fun. This past month, on the **17th**, we again celebrated Oktoberfest at **The Ambry**. A great time and a wonderful meal were had by all. The nice and ample salad bar, together with a delicious German meal, made for a terrific autumn event in a great venue.

This month, we go to one of my favorites, **Zuckerello's**, on **Sunday, November 17**, at **5pm** for cocktails and mingling, followed by a fabulous dinner. I simply adore their bread, and the food is to die for. Both Eli and Steve are the perfect hosts, (love their bear hugs), together with their friendly, efficient wait staff, especially Angela. Don't miss this one. Remember reservations close on **Tuesday, November 12, 2019**.

**Save The Date: Sunday, December 15th**, when **SAGE** returns to **The Embassy Suites on 17th Street Causeway**, for our Holiday Party.

**Note:** For those of you who reserve at the last minute, we will no longer accept payment at the door. Reservations together with payment with a credit card or cash will be accepted either by phone or in person at the **SAGE** office. As always, for ongoing activities, consult your **SAGE** Calendar for meeting times and places.  
**Happy Thanksgiving to ALL!**

Ciao for now.



## NOTES FROM THE MEN'S DROP-IN

Carl Barton

**SAGE Men's Drop-In** meets every Wednesday from 1:00pm to 3:00pm in Room 204 at The Pride Center. You are cordially invited to attend one of our weekly meetings. Come, join in, and participate in some of our lively and informative discussions. New members and guests are always welcome. Each meeting always ends with a little entertainment. Thanks to **Jefy Gaines** for his special co-hosting and assistance. Thanks to **President Patrick S. Vida** for providing baked goods. So, stop by on Wednesday afternoons and have some fun!



Marc Flanagan

## SEE YOU AT THE MOVIES



Michael Vita

The life and times of **Truman (Tru) Capote** are well chronicled. With countless TV show appearances, films based on his novels and those who imitate his peculiar speech patterns, it's safe to say Capote has received ample publicity. Even three decades after his passing, the legacy of Tru continues to burn brightly. The **SAGE** November movie, **Infamous**, supplements this by documenting the research that went into his most renowned book, **In Cold Blood**. Based on a book by **George Plimpton**, **Infamous** was released around the time that the movie **Capote** was basking in Oscar glory. The reviews suggested that it would wither in Capote's shadow. While the receipts were significantly less than its antecedent, **Infamous** breaks new ground throughout. The similarities between films are Tru's discovery of the crime, his traveling to the scene of the tragedy to investigate (and his persistence to get the details) and his interactions with the killers. **Infamous** takes an unorthodox approach to stand apart. Not unlike Tru, the characters take themselves (and each other) less seriously than in "Capote". **Toby Jones** portrays a campier Tru than did **Phillip Michael Seymour**. In turn, the dialogue is generally grittier. Often, Tru's frequent demands for clarity are met with objection. At times, the responders cut Tru down to size. Consequently, this results in him not being as seemingly idolized. New York society receives play throughout **Infamous**. It is common knowledge that Tru hobnobbed with non-literary celebrities and how these relationships allow viewers to gain insight into his personality.



*Continues on back cover*





## SAGE Health Tips

Gene Majka, APRN

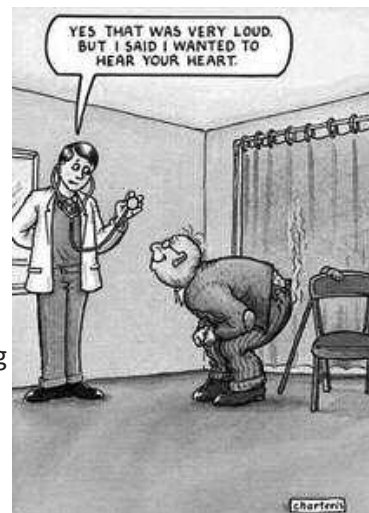
Welcome. If you have a topic, comment or questions, please send an email to [sagesofl@gmail.com](mailto:sagesofl@gmail.com).

### Passing the Fromage

GAS. We all have it, we all pass it. Flatulence (aka farting) is a normal biological process. Some people pass wind only a few times a day, others a lot more, but the average is said to be about 5 to 15 times a day. The body produces 2 to 4 pints of gas in the bowels daily. Almost all of this will be passed out within a 24- hour period. Many times, we are unaware of passing wind. There are no medical guidelines defining the normal frequency or volume of flatulence. You're probably the best person to assess your own symptoms. You are the best person if you are passing gas more than usual

#### Causes of Gas

We all take in air when we swallow and chew food and that air has to be released in the upper (burb) or lower (fart) outputs of your digestive system. Loose dentures cause more air to be swallowed. Excess air can be swallowed by: chewing gum, smoking, sucking on pen tops, hard sweets, having loose-fitting dentures, not chewing food slowly and thoroughly – swallowing large pieces of food causes you to swallow more air. Foods containing a high amount of non-absorbable carbohydrates include: beans, bran, broccoli, cabbage, cauliflower, artichokes, raisins, pulses (legumes), lentils, onions, prunes, apples and Brussels sprouts. Carbonated drinks are a cause of gas. The best person to evaluate your gas production from certain foods is YOU. If you are lactose or fructose intolerant it means more gas production. Medications such as blood pressure drugs, narcotic pain relievers, ibuprofen, steroids, statins (cholesterol medications) anti-fungal, laxatives and antibiotics can be culprits of excessive gas production. Certain foods known to you may cause bloating, for me its red meat. If I eat a great deal in a week, avoid me. Lastly, inactivity will cause gas build up and when you start moving you are prone for a big release (explosive) of gas.



#### Reducing Gas

Changing your diet and activity as well as over the counter medications can decrease gas. Please check with your health care practitioner to see if these medications are compatible with your prescriptive medications. It is important to eat a healthy balanced diet, including at least 5 portions of fruit and vegetables a day. Foods that are easy to digest include: potatoes, rice, lettuce, bananas, grapes, citrus fruits, such as oranges and yogurt. Of course, that dreaded word to reduce gas is EXERCISE.

#### Problems

If your gas production is more than usual it may be signs of a disease. It can be a symptom of many digestive disorders. Contact your health care practitioner.

#### References and Resources:

<https://www.nhsinform.scot/illnesses-and-conditions/stomach-liver-and-gastrointestinal-tract/flatulence>  
<https://www.seniorhealth365.com/health/flatulence-gas-problems-in-the-elderly/>  
<https://www.agingcare.com/Articles/what-causes-flatulence-in-the-elderly-164293.htm>  
<https://www.webmd.com/digestive-disorders/features/digestive-health-aging#1>

**SAGE cares because YOU care about your health.**

**Please always seek advice from your physician/nurse practitioner (HP's).**

**Thank you to my editors Ann Smith GNP, and Martin Horowitz, MD.**

*Continued from page 10*

*Infamous* has a star-studded cast. Tru's traveling companion is author, Harper Lee (**Sandra Bullock**). Babe Paley (**Sigourney Weaver**) is a lunch buddy who seeks advice about her marital problems. **Gwyneth Paltrow's** talents are showcased, as she croons the opening tune and dramatizes in a couple other scenes. If you recall how the relationship evolved in *Capote* between Tru and Kansas sheriff Alvin Dewey, **Jeff Daniels'** portrayal throughout *Infamous* provides a wrinkle that gives the author valuable material for the book. The paramount feature that distinguishes *Infamous* is the volatility of convict, Perry Jones (**Daniel Craig**... one of the James Bond actors). The viewer is warned to suspend reality while witnessing how Tru manipulates Jones to offer details about the crime. The tension is often palpable during the extended time the film takes to make a breakthrough.

During the period of preparation for trial, witness verification and finding an impartial jury, the direction of the case is altered in dramatic ways. As one can envision, this tests the will of attorneys and those providing testimony. As he commutes between home and Kansas, Tru's viewpoints also evolve. His friends notice the increasing obsession with his subjects, even as they are regaled by anecdotes regarding the case. When reaching an emotional impasse, Tru utilizes his coping mechanisms in a way that allows him to ultimately complete the project.

In conclusion, *Infamous* takes a more imaginative orientation than *Capote* that may have impacted the plot of *In Cold Blood*. Perhaps it's this single facet that determines which production one prefers.

*Infamous* is rated R for language, violence and some sexuality. It will screen with subtitles on **Monday, November 18 at 4pm in Room 204 of the Pride Center**. The running time is 118 minutes with dinner to follow.

## **SAGE Recognizes Lifetime Members**

We are grateful for all our members, but we have a special appreciation for those of you who have shown a commitment to the future of **SAGE of South Florida** by becoming **Lifetime Members**. Would you like to add your name to this list? Then become a Lifetime Member when you submit your annual membership application!

### **SAGE Lifetime Members:**

**BOB ADAMS – ROBERT J BOZEK – GEORGE CASTRATARO – DONALD CURIALE - MATT FARBER**

**PAUL FASANA – JODI A FISCHER – MARC FLANAGAN – JOHN GAMBINO - RICHARD GILMER**

**KENNETH GOODMAN – JUDITH HARTSHORN – JACKSON HAVERLY - RICHARD E HERMAN - JAMES W LAIRD**

**MARILYN LAMKAY – TOMMASO LEPORE - PATTI LYNN – PAUL MCNAMARA - DAVID MURPHY – JACK MYERS**

**BRETT PEELER - HUGH RANCE – CLAYTON RANEY - GARY RESNICK - WAYNE SCHREBE – ANN SMITH**

**ALLEN SPIESS – ALAN R SUTHERLAND - STEVE THAYER – RAQUEL C WHITE**

### **FRIENDLY SUPPORT PROGRAM**

We'd like to think we are not merely fair-weather friends, but people who really care about our SAGE family. If you know of any SAGE member who is sick, in the hospital, recently lost a loved one, or would appreciate a friendly call or a note of cheer, please contact:

**For Women** – Jean Johnson & Norma Wingo @ 954.804.3013

**For Men** – Michael Vita @ 786.586.4286

#### **SAGE MEMBERS IN NEED**

If you are a Senior, or a Care Giver, who needs information or referral services regarding assistance with Activities of Daily Living, please contact the ADRC (Aging and Disability Resource Center), part of the Area Agency on Aging:

**In Broward County** – 954.745.9779

**In Palm Beach County** – 561.684.5885

#### **BEREAVEMENT GROUP**

After the funeral, grieving gets intense and lonely. Free LGBT Bereavement Group helps to manage the waves and tsunamis of grief. For days, time, and location contact:

**Rev. Anne Atwell** – 954.462.2004x208

[Anne@sunshinecathedral.net](mailto:Anne@sunshinecathedral.net)



# SAGE EVENT CALENDAR

## November 2019

Sunday	Monday	Tuesday	Wednesday	Thursday	Friday	Saturday
					<b>1</b>	<b>2</b> 10:00 am SAGE Board Meeting 12:30 pm SAGE Monthly Luncheon Both at the Herb Skolnick Center in Palm Aire.
<b>3</b> Daylight Saving Time ends (fall forward)	<b>4</b> 11:00 am SAGE on the Border Co-Ed/Alternatives at the Volen Center	<b>5</b>	<b>6</b> 1:00 pm Men's Drop-In @ Pride Center at Equality Park 4:00 pm Windows 10 for Seniors @ The Pride Center	<b>7</b>	<b>8</b>	<b>9</b> 11:00 am SAGE Book Club @ Stonewall Library
<b>10</b>	<b>11</b> Veterans Day 2:30 pm Roundtable at The Pride Center	<b>12</b>	<b>13</b> 1:00 pm Men's Drop-In @ Pride Center at Equality Park 4:00 pm Windows 10 for Seniors @ The Pride Center	<b>14</b> 12:00 pm SAGE Women's Lunch at Golden Corral	<b>15</b> 1:30 pm Rocketman presented by SAGE and Prime Gentlemen	<b>16</b>
<b>17</b> 5:00 pm SAGE Dinner at Zuckerellos	<b>18</b> 11:00 am SAGE on the Border Co-Ed/Alternatives at the Volen Center 4:00 pm SAGE Movie at Pride Center AVRoom 204	<b>19</b>	<b>20</b> 1:00 pm Men's Drop-In @ Pride Center at Equality Park 4:00 pm Windows 10 for Seniors @ The Pride Center	<b>21</b>	<b>22</b>	<b>23</b>
<b>24</b>	<b>25</b> 11:00 am SAGE on the Border Co-Ed/Alternatives at the Volen Center 2:30 pm Roundtable 5:00 pm Men's Night Out at Tropics Grille	<b>26</b>	<b>27</b> 1:00 pm Men's Drop-In @ Pride Center at Equality Park 4:00 pm Windows 10 for Seniors @ The Pride Center	<b>28</b> Thanksgiving Day  Happy Thanksgiving!	<b>29</b> Black Friday	<b>30</b>

# **UPCOMING SAGE EVENTS**

**Thursday, November 14, 2019 at 12 noon, join the Women of SAGE for lunch at the Golden Corral Restaurant at 7401 W. Commercial Blvd. in Tamarac, FL**

**Monday, November 25, 2019 at 5:00 pm plan to attend SAGE Men's Night Out at The Tropics Grille, 2000 Wilton Drive in Wilton Manors. Dinner follows at 5:30 pm**

**Mark your calendars and plan to attend the very popular SAGE Holiday Party on Sunday, December 15, 2019 beginning at 1 pm at Embassy Suites in Fort Lauderdale. Reservations are necessary. The reservation form is enclosed with this mailing and can also be found at the SAGE website.**

## **Community Events**

**BALLET AND OPERA GROUP: Meets the 2<sup>nd</sup> & 4<sup>th</sup> Sunday at The Pride Center (Rm 204) at 12:30 pm**

**GLBTQ VETERAN'S DROP IN GROUP sponsored by the Gold Coast Chapter of AVER meets the 2nd Tuesday of each month at 7:00 pm, at SunServe (2312 Wilton Dr. in Wilton Manors)**



**November 2 at 12:30 pm**  
**HERB SKOLNICK COMMUNITY CENTER**

800 SW 36th Avenue, Pompano Beach, FL

**RESERVATIONS REQUIRED !**

**Members \$15.00                      Guests \$20.00**

Everyone Pays at the Door

Doors Open at 12:00 pm

Reservations must be made by 12:30 pm on  
Thursday, October 31, 2019 by calling  
954.634.7219



There have been numerous issues regarding capturing data of marginalized communities in the 2020 Census. Will there be a citizenship question in the survey? Will there be questions of sexual orientation and gender identity on the survey? The new questionnaire

will ask couples living together if they are in same or opposite sex relationships. How does all this affect the LGBTQ Community? Join us on Nov. 2 and find out.

If you arrive early, make yourself comfortable in the lobby and meet with other SAGE members and their guests.

**LUNCH & LEARN IS A SAGE-SPONSORED ACTIVITY**

**NOVEMBER MENU**

**Romaine Hearts Salad**

**Veal Cannelloni**

**Flounder "Almondine"**

(Flounder lightly coated with almond breading and served with lemon sauce)

**Grilled Chicken available**

**Peas & Carrots**

**New York Cheesecake with Strawberries**

*Catered By*



**SAGE WANTS YOU !**

**PLEASE JOIN TODAY**



**The NEW membership form is on the reverse side.**

**The new membership categories are:**

- **\$35 Single Membership with Newsletter Electronically from SAGE Website**
- **\$45 Single Membership with Newsletter mailed to you via US Post Office**
- **\$60 Couple Membership with Newsletter Electronically from SAGE Website**
- **\$70 Couple Membership with one Newsletter Electronically and one mailed via US Mail**
- **\$300 for An Individual Lifetime Membership**

**Thank you very much for your support and participation.**



SAGE of South Florida, Inc  
**SAGE MEMBERSHIP FORM**

RENEWAL ☐  
NEW MEMBER ☐

Member 1: First: \_\_\_\_\_ Last: \_\_\_\_\_ First You Want to Use: \_\_\_\_\_

Member 2: First: \_\_\_\_\_ Last: \_\_\_\_\_ First You Want to Use: \_\_\_\_\_

Address: \_\_\_\_\_

City: \_\_\_\_\_ State: \_\_\_\_\_ Zip: \_\_\_\_\_

Home Phone 1: \_\_\_\_\_ Cell Phone 1: \_\_\_\_\_ Birthday 1 (Month/Day) \_\_\_\_/\_\_\_\_

Home Phone 2: \_\_\_\_\_ Cell Phone 2: \_\_\_\_\_ Birthday 2 (Month/Day) \_\_\_\_/\_\_\_\_

E-Mail 1: \_\_\_\_\_ Check to receive mailings by E-Mail. \_\_\_\_

E-Mail 2: \_\_\_\_\_ Check to receive mailings by E-Mail. \_\_\_\_

**SAGE Annual Membership Fees/Newsletter Mailing Options: CHECK THE APPROPRIATE LINE**

1. \$35 Single Membership with Newsletter Electronically from SAGE Website \_\_\_\_
2. \$45 Single Membership with Newsletter mailed to you via US Post Office \_\_\_\_
3. \$60 Couple Membership with Newsletter Electronically from SAGE Website \_\_\_\_
4. \$70 Couple Membership with one Newsletter Electronically from SAGE Website  
and one mailed via US Post Office \_\_\_\_
5. \$300 for An Individual Lifetime Membership \_\_\_\_
6. \$\_\_\_\_\_ as a special Gift to SAGE \_\_\_\_
7. I want to remember SAGE in my will. Please contact me \_\_\_\_

**As a member of SAGE, I give permission for the use of my name and my likeness in any photo or image taken at, and used to promote, SAGE sponsored activities. SAGE does not share your contact information with third parties**

**Please enclose your check made payable to SAGE of South Florida for the option you checked above. If paying by Credit Card please fill out section below.**

**Mail to: PO Box 70516, Oakland Park, FL 33307 - SAGE Message Line 954-634-7219**

**For Snowbirds Only**

Dates to change my mailing address: From \_\_\_\_/\_\_\_\_/\_\_\_\_ to \_\_\_\_/\_\_\_\_/\_\_\_\_ as follows:

Address: \_\_\_\_\_

City: \_\_\_\_\_ State: \_\_\_\_\_ Zip: \_\_\_\_\_

**Pay by Credit Card:**

I authorize SAGE of South Florida, Inc. to charge my: (check one) \_\_\_\_ Visa \_\_\_\_ MasterCard \_\_\_\_ Amex

in the amount of \$\_\_\_\_\_ Credit Card Number:

--	--	--	--	--	--	--	--	--	--	--	--	--	--	--	--

Name as it appears on Card: \_\_\_\_\_ Exp. Date: \_\_\_\_/\_\_\_\_ Security Code: \_\_\_\_

Billing Address: \_\_\_\_\_

City: \_\_\_\_\_ State: \_\_\_\_\_ Zip Code: \_\_\_\_\_ Phone # \_\_\_\_\_





3017 E Commercial Blvd, Fort Lauderdale, FL 33308 (954) 776-4282

**Sunday - November 17, 2019**

**Cocktails & Conversation 5pm-6pm(cash bar) with BOGO pricing at the bar only. Dinner Seating: 6pm**

**Starter: Soup (Choice of Pasta Fagiola or Minestrone) or House Salad**  
served with fresh-baked Crusty Italian bread with Garlic Dipping Sauce or Butter

**Entrée -choice of one:**

**Chicken Zuckerello's-** Chicken breast stuffed with mushrooms, prosciutto, roasted peppers, & Rosemary in a Marsala mushroom sauce. Creamy mashed potatoes & fresh vegetables.

**Chicken Parmesan-** Topped with Mozzarella Cheese & Pomodoro Sauce over Linguini and Oven Baked

**Meat Lasagna-** Meat Ragout, Cheeses & Pomodoro Sauce

**Parmesan Lemon Sole-** Parmesan Crusted Lemon Sole, White Wine, Lemon Butter Sauce with a side of Mashed potatoes

**Dessert: Cannoli or Chocolate Cake (Sugar-Free Dessert -upon request)**

**Beverages: Coffee, Hot/Iced Tea, Soft Drinks ( At Table Only)**

**Pricing: \$23.00 @ Members or \$28.00 @ Non-Members**

**(A Portion of Member Cost is Subsidized by SAGE)**

**Includes Meal, Beverage (as indicated above), Tax and Tip**

**Cocktails, Wine, Beer, Espresso & Cappuccino on a Cash-Bar basis -NOT included in price**

**Reservations Close NO LATER THAN: Tuesday, November 12, 2019- No Refunds**

-----  
**ZUCKERELLO'S Welcomes SAGE Sunday November 17, 2019**

#\_\_\_ MEMBERS @ \$23.00 & #\_\_\_ NON-MEMBERS @ \$28.00 My Phone Number: \_\_\_\_\_

Name: \_\_\_\_\_ Entrée Choice: \_\_\_\_\_

Name: \_\_\_\_\_ Entrée Choice: \_\_\_\_\_

Name: \_\_\_\_\_ Entrée Choice: \_\_\_\_\_

**Mail with Payment to: SAGE at PO BOX 70516, OAKLAND PARK, FL 33307**  
**Questions: Call the SAGE office at (954) 634-7219 - A SAGE-SPONSORED ACTIVITY**

# **SAGE HOLIDAY PARTY**

**SUNDAY, December 15, 2019 1:00pm – 4:00pm**



**EMBASSY  
SUITES**

by HILTON™

**1100 SE 17<sup>th</sup> Street Causeway Ft. Lauderdale, FL 33316 (954-527-2700)**

***Front Cash Bar Available From 1:00pm – 2:00pm for Drinks on the Terrace***

## **DINNER MENU 2:15pm – 4:00pm**

### **Salad:**

***California Baby Green Salad, California Baby Greens wrapped in Cucumber, Tear  
Drop Tomatoes and Carrot Ribbons  
Warm Rolls & Butter***

### **Entrée -Choice of one:**

***Parmesan Crusted Breast of Chicken, Creamy Champaign Sauce,  
Rosemary and Roasted Garlic***

***Teriyaki Glazed Salmon***

***NY Strip Steak with Shallot Butter***

***All Entrees served with Oven Roasted Potatoes and Fresh Vegetables***

***Dessert: Tiramisu or Sliced Fresh Fruit (Sugar-Free Dessert – Select Below)***

***Beverages: Regular Coffee or Decaf/Hot or Iced Tea (At Table Only)***

***Pricing: \$29.00 @ Members & \$42.00 @ Non-Members***

***(A Portion of Members Cost is Subsidized by SAGE)***

***Reservations Close No Later Than 1pm Monday, December 09, 2019- NO REFUNDS!***

---

**SAGE Holiday Party at Embassy Suites - Sunday December 15, 2019**

**\_\_\_\_\_ MEMBERS @ \$29.00 & \_\_\_\_\_ NON-MEMBERS @ \$42.00 My Phone # \_\_\_\_\_**

Name: \_\_\_\_\_ Entrée: \_\_\_\_\_

(Check if Sugar-free Dessert \_\_\_\_\_)

Name: \_\_\_\_\_ Entrée: \_\_\_\_\_

(Check if Sugar-free Dessert \_\_\_\_\_)

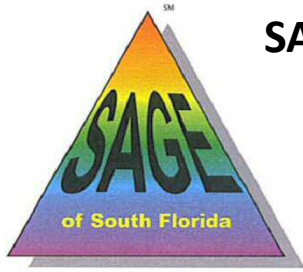
Name: \_\_\_\_\_ Entrée: \_\_\_\_\_

(Check if Sugar-free Dessert \_\_\_\_\_)

**Mail with Payment to: SAGE at PO BOX 70516, Oakland Park, FL 33307**

**Questions: Call the SAGE office at (954) 634-7219 - A SAGE-SPONSORED EVENT**



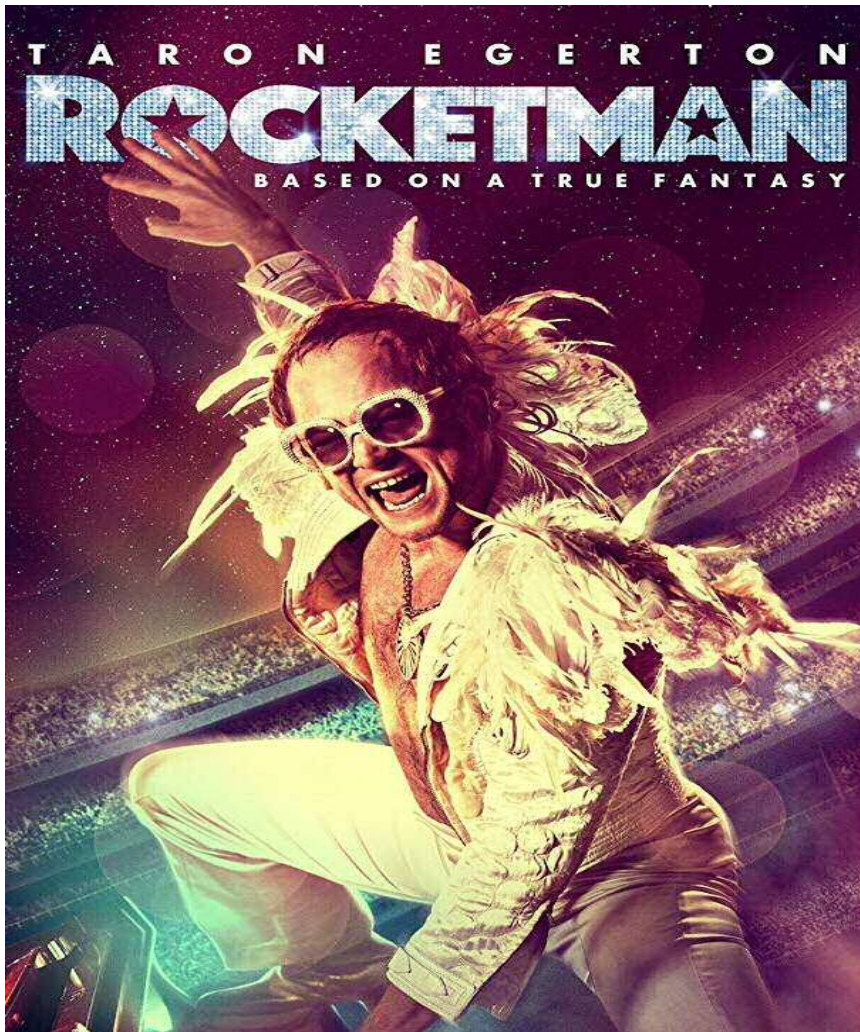


**SAGE of South Florida & Prime Gentlemen**  
**present**  
***Rocketman***



**November 15, 2019 at 1:30 pm**  
**Pride Center, Main Hall**

*Rocketman*, starring an electrifying **Taron Egerton** as the young, addicted, conflicted, gay and gifted **Elton John**, is an epic musical fantasy about the incredible human story of Elton John's breakthrough years. The film follows the fantastical journey of transformation from shy piano prodigy Reginal Dwight into international superstar Elton John. There's plenty of sex, not to mention pills being popped and coke getting snorted. The film owes its success less to shock value than to sheer cinematic inventiveness and Egerton's total immersion in the role. The star gets so far inside the man and his music that Egerton and Elton – a shy kid off stage and a strutting peacock on – seem to breathe as one. Egerton is a virtuoso who does his own singing and busts his own moves. This inspirational story – set to Elton John's most beloved songs, tells the universally relatable story of how a small town boy became one of the most iconic figures in pop culture. *Rocketman* also stars Jamie Bell as Elton's longtime lyricist and writing partner Bernie Taupin, Richard Madden as Elton's first manager, John Reid and Bryce Dallas Howard as Elton's mother, Sheila Farebrother.



There will be free soda and popcorn served during the movie.

For those interested, there is an optional lunch planned before the movie at 12:00pm at Galanga's Thai Restaurant, 2389 Wilton Drive (two blocks south of Five Corners). There is a 2 for 1 lunch menu with around 20 items priced \$10 to \$13 (i.e. \$5.00-\$6.50 plus beverage per person)