

# The SAGE

The Newsletter of SAGE of South Florida

November 2016

## THE IMPORTANCE OF SOCIALIZING AS WE AGE

By Ron Catena, Carl M. Galli, Caroline Leto, Frank Piasecki, and Ann C. Smith

November in South Florida leads the inexorable march of “The Season”. This year complicated by an Election Day which could lead some of us into high-anxiety or exaltation. The same week is capped off by Veterans Day –when **SAGE thanks and salutes our many Veterans and Retired Military** who secured our rights to vote during this election. Who guaranteed the freedoms which allow us to gather and speak freely and openly.

And smack-dab in the center of “The Season” comes one of our most successful events: **Our Milestone Birthday Celebration. On Sunday, January 22nd we celebrate our Most Senior Seniors: Those Members who have turned 75, 80, 85, 90 -and above.** We want you to come together and be honored not just for your longevity in years, but for your accomplishments during those years.

“The Season” can be daunting. It can be a time when some Seniors, especially among our LGBT constituents, are alone – or lonely. But **I believe that SAGE of South Florida is a family.** Where we come together in organized, and more personal, ways to look after one another. To invite others to our homes for dinner. Or to go to a movie. To celebrate together. But you must be willing to participate!

And participate you may during our three wonderful discussion Groups: **The Men’s Drop-In** (one of our longest-running programs), where, literally, no holds are barred (except for personal attacks). Our once-experimental, now flourishing, **Co-Ed SAGE on the Border/Alternatives (SOBA)**, in collaboration with the Volen Center in Boca Raton. And our newest **Co-Ed SAGES of SAGE**; polite and cerebral at times, and a bit cheeky at others. Each is unique. And SAGE and non-SAGE Community Members are invited to come to each for intelligent/humorous/insightful/emotional discourse. Where you can meet others who might be just as interesting as you.



*I look forward to the group because I’m with people my own age. I listen to each person and realize many of my thoughts and concerns are shared by many. Terry William*

According to **Ron Catena**, moderator of the weekly **Men’s Drop-In Group**, “I have witnessed time and time again new guys showing up in a state of depression or feeling awkward with a new group of guys. The members work hard to make everyone feel welcome. As moderator I make a point of welcoming newcomers personally at the conclusion of the meeting. I ask them if they enjoyed themselves and urge them to return the next week. We have had people come to our drop-in group who were shy withdrawn and barely spoke. After a few weeks, when they became comfortable, they became active participants in the conversation and banter and suddenly this quiet, unassuming guy has a fantastic sense of humor and a sharp wit. He embraces us and we love him back. Eventually he will tell us how important we have become to him.”

As we get older it is very important that we continue spending time with others. Many people in our age group have lost lifelong partners or dear friends. Frank Piasecki, one of the moderators of the **Co-Ed SAGES of SAGE**, tells us, “There are so many benefits to engaging in friendly dialog with our peers. We can learn so much from others and people can be so fascinating. With the different SAGE Groups, I have observed people connecting with people. Most of us are retired and we may have reduced opportunities to socialize. But with SAGE there are great options to meet other people and make new acquaintances and friends. I especially like to see the same people over a period of time which allows me to know more

*Continues on back page*

## SAGE BIRTHDAYS FOR THIS MONTH

The SAGE Board would like to acknowledge the following members whose birthdays are this month as well as any other member whose birthday that we don't have.  
If, when you renewed your membership or became a new member you did not give us your birthday, you may call the office and leave the information at 954.634.7219 or e-mail us @ sagesofl@gmail.com.

First Name	Last Name	Birthday	First Name	Last Name	Birthday
ROBERT	KAMINSKY	Nov-02	DENNIS	HUDSON	Nov-22
ED	LUISI	Nov-04	CAROL	CLARK	Nov-23
BRAD	LUTZ	Nov-07	MIKE	PETERSON	Nov-23
GENE	BIFULCO	Nov-09	NANCY S	DRENNEN	Nov-26
RICHARD	KELLY	Nov-09	MARK	SCHWARTZWALD	Nov-28
TED	SCHULTZ	Nov-11	HARVEY	HOFFENBERG	Nov-29
OSAMU	MIYACH	Nov-12			
ROBERT J	LORD	Nov-20			

### New Members September 2016

RAY J. LEGALL, JACK LEY, WILL MC LEAN, ERROL NOTHSTEIN, STEVE THAYER

***If you have had an anniversary with SAGE for either 5, 10, 15 or 20 years and you have not received your pin, please call the SAGE office (954.634.7219) to pick it up.***

## TED SINGER "IN MEMORIAM"

by Gerald Heineman, An Original Founder of SAGE of South Florida



***Ted Singer with lifelong partner, Ray Drakoff.  
They were always together!***

Years ago, SAGE had a social group in Miami. There I met Ted and his life partner, Ray. I recalled seeing them at the NYC SAGE and we discovered we had many interests in common. As our friendship prospered we did many things together. In summer, we, the "holy three," spent weekends in the mountains of New York state or at the Jersey Shore. When the seasons changed, in the fall we left the NY apartments for the warmth of Florida.

We became involved in SAGE activities but one of our mutual interests was collecting antiques, thus we went to many exhibits. Ted and Ray were collectors of antique silver, cut glass and southwestern belt buckles. Ted had a great sense of humor. It was a quiet but clever wit that charmed his

friends. Every year at Ted's birthday, he would invite 30 to 35 friends to gather for a sumptuous dinner. It was a birthday event with a group of close friends. Ted was quite a magnanimous person when South Florida organizations had their annual fund raising appeals. He showed his generosity in many ways and cared about people and seniors getting together.

Growing up in a business world, Ted was quite successful. An engineer, his company helped build Building 5 of the World Trade Center. Finally, the twice yearly auto trips ended ten years ago when Ted and Ray decided to settle permanently in Bal Harbour. In the past few years I now understand why he avoided being with friends. He had become ill, thus quite a private person. Ted did not want to burden his friends with his illness. The last time I saw Ted at the rehab center, his last words were addressed to me, "I want to go home!" Well, Ted is home and at peace. His loving partner, Ray, survives him but is seriously ill. Ted made sure he would be properly cared for. SAGE of South Florida mourns the loss of our friend and benefactor, Ted Singer, and sends our condolences to his partner, Ray Drakoff.

## REGULARLY SCHEDULED SAGE-SPONSORED ACTIVITIES



### SAGE ON THE BORDER/ ALTERNATIVES

*Caroline Leto & Frank Piasecki*

This **Co-Ed** discussion group meets every Monday from 11:00 am to 1:00

pm, at The Volen Center, 1515 W. Palmetto Park Rd., Boca Raton 33486. Everyone is welcome. No reservations are needed. (Please call The Volen Center at 561-395-8920 to assure the Center is open as it is closed on most Legal Holidays.)



### Co-Ed SAGES OF SAGE



*Frank Piasecki & Kay Beattie*

Real people...real questions...and real conversations are what makes the SAGES of SAGE discussion group an interesting experience.



How fortunate we are to have the opportunity to socially interact with our LGBT peers on a regular monthly basis in a non-threatening welcoming environment. Here is how it works: we meet at the Pride Center on the third Thursday of the month at 10:45 am in Room B207. The group's facilitators ask questions to which participants respond with their thoughts, opinions, experiences, etc. Because we are mature there is a lot of collective wisdom to be shared and pondered. Frequently there is laughter over what we hear. It would be great if you would join us and participate in the engaging dialog. **Mark your calendar for Thursday, November 17.** The meeting ends at noon with lunch to follow for those who are interested. (This is one of those groups where is ok if you do not know anybody—you'll fit right in.)



### SAGE COMPUTER CLUB

*Ken Goodman*

Would you like to feel more confident when using your computer, smartphone, tablet, or any other type of internet connected device? You

should join us at the **SAGE Computer Club. Bring your questions and problems and we will try to help you solve them.** No question is too basic. We want everybody to learn and become better at using their devices.

If you have a laptop computer, smartphone or tablet you can bring it with you to help resolve your problem. We discuss Windows, OS/X, Android, iPhone and Apple iOS operating systems. **The Computer Club meets every Wednesday at 4:00 pm in the AV Room 206 least an hour. The meetings of the SAGE Computer Club are held at The Pride Center.** Also, if you wish, you can join us for dinner after the meeting at a nearby, reasonably-priced, gay-friendly restaurant.



### SAGE MEN'S Night Out

*John Chandler*

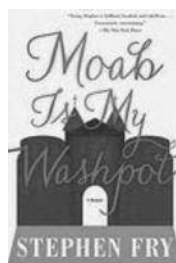
If you are a man who enjoys the company of other men, then we have an evening for you.

**Every 4th Monday of the month,** SAGE Board

member, John Chandler, co-ordinates cocktails and dinner at Tropic's Restaurant in Wilton Manors. Cocktails, lively conversation, and meeting and making friends **begin at 5:30 pm. At 6:30 pm** the party moves to the dining room where we enjoy a terrific "Ten For \$10 Menu." Any questions, **please contact John at 954-933-2963 or Email him at stonyman4you@aol.com.**

### SAGE Book Discussion Group

*Philip Collier & Alan Dorfman*



Due to Hurricane Matthew, the SAGE book group's discussion of **Moab is My Washpot** did not occur in October but has been rescheduled for November. In **Moab is My Washpot**, the engaging author admits to lies, thievery, homosexuality, excessive cleverness, and other peccadilloes in this British boarding school adventure . . .

Sent off to school at the age of seven, Steven Fry survived beatings, misery, love affairs, carnal violation, expulsion, attempted suicide, criminal conviction and imprisonment to emerge, at the age of eighteen, ready to start over in a world in which he had always felt a stranger. The actress Emma Thompson has characterized her friend as "90 percent gay, 10 percent other." Please consider joining in the book discussion on November 12 at the Stonewall Library, 1300 E. Sunrise Blvd., Ft. Lauderdale, from 11 AM to noon. All readers are welcome no reservation is required. For additional information, please contact Philip (443) 614-7135 or Alan (561) 385-8260.



### SAGE WOMEN'S LUNCH

*Nancy Drennen & Jean Johnson*

**Every 2nd Thursday of the month,** the

Women of SAGE of South Florida meet at the Golden Corral, 7401 Commercial Blvd., Tamarac 33319 at 12:00 pm. Here they meet, greet, eat and have conversations on current happenings. Call Nancy at 954.741.1540 for information. The restaurant's phone is 954.623.6400. Reservations are not required.





## SAGE 22<sup>nd</sup> ANNIVERSARY MEET-UP



## SAGE MEN'S DROP-IN



Photos contributed by Rex Coston, Allen Churchman and others. View more photos by visiting our Photo Gallery at our website: [www.sageofsofl.org](http://www.sageofsofl.org).



# OCTOBER LUNCH & LEARN



## SAGE ON THE BORDER/ALTERNATIVES MEMBERS GATHER FOR COLUMBUS DAY LUNCH





## NOTES FROM THE MEN'S DROP IN

Ron Catena

I love this time of the year. It is the start of the holiday season. But most of all because our dear snow bird friends start returning with stories of their summer escapades. Some just spend time with family and friends "up north," sharing stories of the exciting lives they enjoy here in South Florida. Especially if they are Drop-In regulars. We welcome everyone back.

The Drop-In group has really enjoyed the political drama here in the United States during this election season. Everyone has an opinion or observation they want to share. Some very thoughtful and insightful. It is great to listen to the guys since they are well informed, savvy, sophisticated voters.

The Drop-In group, continuing its tradition of "no holiday shall go uncelebrated", will hold a Thanksgiving luncheon on Wednesday, November 16th, at 1:00 pm, in the main hall of The Pride Center. A sumptuous turkey dinner will be served. **Advance payment and reservation required.** As a special treat, our very own **Patrick Vida** will prepare and donate the desserts, which are always delicious. Thanks for your generosity, Patrick.

The Men's Drop-In group meets every Wednesday, at 1:00 pm, at The Pride Center. Come meet some of South Florida's most sociable and fun guys. We will welcome you warmly.

## SOCIAL LITES

Ron Catena

The social committee certainly subscribes to the prepare well in advance theory. We have planned and booked activities into February 2017. So take out your calendars and "save the dates" so that you don't miss out since some events are "capacity" sensitive.

On **Sunday, November 13th**, we will enjoy dinner at **Zuckerello's**. See enclosed reservation flyer for menu selections and pricing. Holiday party at **Galuppi's** on **Sunday, December 11th, 2:30 pm drinks followed by cheese, crackers and fruit buffet and dinner.** This is a capacity controlled event. Reserve early so that you don't miss out on this always well attended, lovely event.

Holiday celebration! Broadway veteran **Michael Vita** will perform in concert on **Sunday, December 18th, at 2:00 pm** in the main hall of **The Pride Center**. At Michael's show last year, we literally had "standing room only." At the conclusion of the show Michael will lead the audience in a "sing-along" of popular Christmas songs. Refreshments will be served. No reservations required. Invite family and friends.

Let's party!



Marc Flanagan

## SEE YOU AT THE MOVIES



Michael Vita

**Is it better to be a fake somebody than a real nobody?**

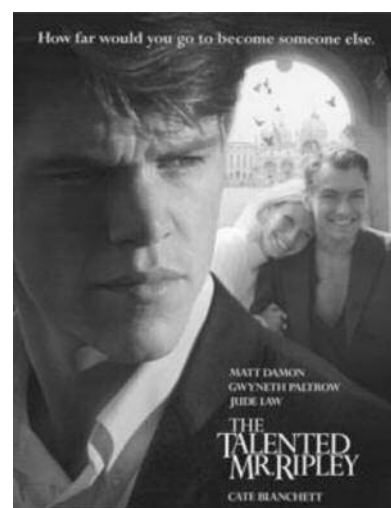
**The Talented Mr. Ripley** is a 1999 American psychological thriller written for the screen and directed by Anthony Minghella. An adaptation of the 1955 Patricia Highsmith novel of the same name, the film stars **Matt Damon** as Tom Ripley, **Jude Law** as Dickie Greenleaf, **Gwyneth Paltrow** as Marge Sherwood and **Cate Blanchett** as Meredith Logue.

They electrify the screen in this riveting thriller from Oscar winning director Minghella ("The English Patient"). Matt Damon "gives one of the year's most extraordinary performances" (Premiere) as Tom Ripley, a calculating young man who believes it's better to

be a fake somebody than a real nobody. Opportunity knocks in the form of a wealthy American shipbuilder who hires Tom to travel to Italy to bring back his playboy son, Dickie (Law). Ripley worms his way into the idyllic lives of Dickie and his girlfriend (Paltrow), plunging into a daring scheme of duplicity, lies and murder.

If you have not seen this film before you are in for a suspenseful treat. The "Talented Mr. Ripley" is one of the films that one can see over and over again. On a par with "American Beauty," and any film by Alfred Hitchcock.

Our screening is on **Monday, November 21st, at 4:00 pm, in Room 204 of The Pride Center**. It is rated R for violence, language and brief nudity. With a running time of 138 minutes, "Ripley" will afford us plenty of time for discussion at dinner afterward.





Email to Editor: [sagesofl@gmail.com](mailto:sagesofl@gmail.com) attn: Editor  
**Website:** [www.sageofsofl.org](http://www.sageofsofl.org)  
**Facebook:** [www.facebook.com/SageOfSouthFloridaInc](http://www.facebook.com/SageOfSouthFloridaInc)  
Mailing Address: SAGE of South Florida  
P.O. Box 70516, Oakland Park, FL 33307

#### **OFFICERS**

President:	Carl M. Galli
Vice President:	Ron Catena
Secretary:	Ann C. Smith
Assistant Secretary:	Frank Piasecki
Treasurer:	Allen Churchman

---

**BOARD MEMBERS AT LARGE:** Carl Barton, Kay Beattie, John Chandler, Nancy Drennen, Terry Feathers, Marty Horowitz, Lee Lawson, Patrick Vida, Bruce Williams and Ron Wudarsky

---

#### **VOLUNTEERS**

Hank Brooks, Frank Cavanaugh, "Chip", Philip Collier, Alan Dorfman, Marc Flanagan, Michael Gagne, Leo Glickstein, Ken Goodman, Emma Hinman, Jean Johnson, Caroline Leto, "Mac", Kathy Macchio, Sonny Miller, Ken Moore, Inez Pasher, Michael Vita, Richard Werner

#### **SAGE MISSION STATEMENT**

SAGE of South Florida is a non-profit organization for Senior action in a Gay Environment to enrich the lives of the GLBT senior community through membership inclusive of age, gender, race, nationality and religion. We believe this can be accomplished by sponsoring social alternatives, to provide personal interaction, offering educational opportunities to deal with the special needs of aging, and promoting contact with the isolated and home-bound persons of our community. SAGE is also an advocate for the concerns and needs of the senior community at large, providing referral information on community resources and promoting inter-generational communication in the GLBT community. SAGE was founded in 1994 as a Florida "not for profit." Corporation. (Federal Tax-Exempt status of 501(c)3 allowing tax-deductible donations.)

#### **SAGE Editorial Policy**

SAGE welcomes contributors to the newsletter. An author may request their entry to be "anonymous." However, the submission, as received by SAGE, must be accompanied by the full name and address of the author. Items will be published at our discretion and does not constitute endorsement by SAGE of South Florida. If we feel that we cannot publish a submission anonymously we will contact the author. We reserve the right to edit articles for size considerations, clarity or standards of decency. We do not accept paid ads in the newsletter.

#### **FRIENDLY SUPPORT PROGRAM**

We'd like to think we are not merely fair weather friends, but people who really care about our SAGE family. If you know of any SAGE member who would appreciate a friendly call, is sick, in the hospital, recently lost a loved one, or just needs a note of cheer, please contact:

For women — Inez Pasher @ 954.563.2814

For men — Ron Catena @ 954.565.8728

#### **SAGE MEMBERS IN NEED**

If you are a Senior, or a Care Giver, who needs information or referral services regarding assistance with Activities of Daily Living please contact the ADRC (Aging and Disability Resource Center) part of the Area Agency on Aging in your County:

In Broward: 954-745-9779

In Palm Beach: 561-684-5885

#### **FOR LUNCH & LEARN INFORMATION, PLEASE SEE ENCLOSED FLYER**

Contents Copyright 2016 SAGE of South Florida, Inc. All rights Reserved. (Except excerpts, under their own protections.)

---

### **CHANGES TO MEDICARE AND MEDICAID**

LGBT people need to be aware of recent developments that change how Medicare and Medicaid work for them. First, the Supreme Court's legalization of same sex marriage in all states changed how Medicare and Medicaid evaluate the eligibility of same sex spouses for both programs. Depending on the program and the individual's circumstances, the changes can be positive or negative. Additionally, Medicare has begun covering Gender Reassignment Surgery and issued new rules that protect transgender older adults from sex discrimination in healthcare.

Three new fact sheets (available from the National Resource Center for LGBT Aging) can help consumers learn how these changes may affect them, whether they are LGBT individuals married to someone of the same sex, or transgender individuals needing to access health care. These fact sheets were produced in partnership with SAGE (Services & Advocacy for Gay, Lesbian, Bisexual, & Transgender Elders), the SHIP National Network (State Health Insurance Assistance Programs), and Administration for Community Living (ACL).

*Continued from front cover*

With the different SAGE Groups, I have observed people connecting with people. Most of us are retired and we may have reduced opportunities to socialize. But with SAGE there are great options to meet other people and make new acquaintances and friends. I especially like to see the same people over a period of time which allows me to know more about a person—one's background and life experiences. There is no reason to be alone when it is easy to attend a SAGE function where you will be included and acknowledged. We all have our own stories to tell and SAGE groups encourage all of us to hear and be heard."

---

*It's my family that I come to be with when loneliness encroaches, when I'm left alone. I come here receiving comfort from friends. Sometimes it gives me a healing and a soothing medicine. Ken LeFleur*

---



Caroline Leto, co-moderator of SOBA (SAGE on the Border/Alternatives), comments on what the group means to her: My personal experience is one of learning and listening to approximately 27 comments on various topics and realizing we are not all alike but each must be tolerant and respect the differences in one another. In June we hit our 7th year and will celebrate this long running group which represents family to its participants. A comment that touched me dearly was when at the funeral of Larry Brown, his sister thanked me for leading this group. She said Larry loved it, spoke of it often, and that it meant a lot to him."

---

*The group has given me the opportunity to meet and make friends with both men and women. Judy Bowling*

---

**Carl M. Galli**, President of SAGE of South Florida, once said "Look around you, and see who you would not have known had you not joined SAGE." And that's true now. There is no reason for being alone. Come, and participate.

We thank the SOBA participants for the use of their comments.



**WOMEN OF SAGE  
POTLUCK  
SATURDAY, NOV. 12  
1:00 pm**

Place: The home of Joan Frimmer  
10470 Gold Leaf Dr. Boynton Beach, FL 33437  
(enter from W. Boynton Beach Blvd.)

Call or Email Ann Smith at 561-276-2346 or [anndrgnldy@aol.com](mailto:anndrgnldy@aol.com) to RSVP.

RSVP deadline is November 5th.

Please indicate what you will bring when you RSVP.

---



# SAGE EVENT CALENDAR

## November 2016

Sunday	Monday	Tuesday	Wednesday	Thursday	Friday	Saturday
		<b>1</b>	<b>2</b> 1:00 pm Men's Drop-In @ Pride Center at Equality Park 4:00 pm Computer Club	<b>3</b>	<b>4</b>	<b>5</b> 9:30 am SAGE Board Meeting 12:30 pm SAGE Monthly Luncheon
<b>6</b> Set Clocks Back 1 hr.	<b>7</b> 11:00 am SAGE on the Border Co-Ed/Alternatives	<b>8</b> Election Day <b>VOTE</b>	<b>9</b> 1:00 pm Men's Drop-In @ Pride Center at Equality Park 4:00 pm Computer Club	<b>10</b> 12:00 pm SAGE Women's Luncheon	<b>11</b> Veterans Day	<b>12</b> 11:00 am SAGE Book Club 1:00 pm Women of SAGE Potluck
<b>13</b> Dinner at Zuckerello's 5 pm (see enclosed flyer)	<b>14</b> 11:00 am SAGE on the Border Co-Ed/Alternatives	<b>15</b>	<b>16</b> 1:00 pm Men's Drop-In Thanksgiving Lunch <b>Reservations Required</b> 4:00 pm Computer Club	<b>17</b> 10:45 am Co-Ed SAGES of SAGE Discussion Group	<b>18</b>	<b>19</b>
<b>20</b>	<b>21</b> 11:00 am SAGE on the Border Co-Ed/Alternatives 4:00 pm SAGE Movie at Pride Center Room 204 The Talented Mr. Ripley	<b>22</b>	<b>23</b> 1:00 pm Men's Drop-In @ Pride Center at Equality Park 4:00 pm Computer Club	<b>24</b> Thanksgiving Day	<b>25</b>	<b>26</b>
<b>27</b>	<b>28</b> 11:00 am SAGE on the Border Co-Ed/Alternatives 5:30 pm Men's Night Out	<b>29</b>	<b>30</b> 1:00 pm Men's Drop-In @ Pride Center at Equality Park 4:00 pm Computer Club			

# **UPCOMING SAGE EVENTS**

**Saturday, Nov. 12, 1:00 pm Women of SAGE Potluck. Contact Ann Smith for information (561-276-2346 or [anndrgnldy@aol.com](mailto:anndrgnldy@aol.com)).**

**Sunday, Nov. 13 at 5:00 pm cash bar, 6:00 pm Dinner at Zuckerello's. See enclosed flyer for information and reservations.**

**Wednesday, Nov. 16 at 1:00 pm Men's Drop-In Thanksgiving Luncheon. Reservations required and can be made at Men's Drop-In.**

**Sunday, Dec. 11 at 2:30 pm SAGE Celebrates the Holidays at Galuppi's. See enclosed flyer for information and reservations.**

**Sunday, December 18, 2016 at 2:00 pm: Michael Vita in Concert at The Pride Center's Main Hall. Open to the Community.**

## **Community Events**

**Tuesday, November 8, 2016: Election Day. Be Sure To Get Out And VOTE!**

**BALLET AND OPERA GROUP meets at The Pride Center at 12:30 pm in room 204 on the 2nd & 4th Sunday of every month.**

**GLBTQ VETERAN'S DROP IN GROUP sponsored by the Gold Coast Chapter of AVER meets the 1st, 3rd, 4th and last Tuesday of each month from 5:30 – 7:00 pm at SunServe (2312 Wilton Drive, Wilton Manors, FL 33305).**



**NOVEMBER 5, 2016 at 12:30 pm**  
**HERB SKOLNICK COMMUNITY CENTER**

800 SW 36th Avenue, Pompano Beach, FL

**RESERVATIONS REQUIRED !!!!!!!!!**

**Members \$14.00      Guests \$19.00**

Everyone Pays at the Door

Doors Open at 12:00 pm

Reservations must be made by 12:30 pm on

Thursday, September 29, 2016 by calling

954.634.7219

**Ernest Olivas, Owner of Emeral Elite Senior Home Care, and John Foxx, Founder for LGBT Senior Fund**



**and Home Essentials, are our**

**guest speakers.** Emerald Elite Senior Home Care, specializing in the LGBT senior community, pro-

vides home health aides (HHAs) and certified nurse assistants (CNAs) to individuals and families. Through Home Essentials, the LGBT Senior Fund will assist seniors with home care, meal deliver and transportation.

If you arrive early, join other SAGE members and rest in the lobby....Thank you.

**NOVEMBER MENU**

Romaine Hearts Salad

Fusilli Primavera

(vegetables & pasta in light pink sauce)

Chicken Wallet

(chicken breast stuffed with spinach and mozzarella)

Poached Potatoes & Carrots

Apple Strudel

**Catered By**



**A SAGE-SPONSORED ACTIVITY**

\_\_\_\_\_ ✂ \_\_\_\_\_ Mail **below** to SAGE of South Florida, PO Box 70516, Oakland Park, FL 33307 \_\_\_\_\_ ✂ \_\_\_\_\_

**SAGE WANTS YOU !!!!**

**PLEASE JOIN OR RENEW TODAY**

**NAME:** \_\_\_\_\_ **BIRTHDAY MONTH** \_\_\_\_\_ **DAY** \_\_\_\_\_

**ADDRESS:** \_\_\_\_\_

**CITY:** \_\_\_\_\_ **STATE:** \_\_\_\_\_ **ZIP:** \_\_\_\_\_

**PHONE:** \_\_\_\_\_ **CELL:** \_\_\_\_\_

**EMAIL:** \_\_\_\_\_

**CIRCLE ONE:**

**RENEWAL**

**NEW MEMBER**

**Newsletter Mailing Options:**

**1. Do not mail the newsletter to me**

**2. Please email me the newsletter**

**3. Please the mail newsletter to me (there is a cost of \$10 making my membership \$45**

**I have enclosed:      \$300 for my Lifetime Membership      ☐**

**\$35 for my Annual Membership      ☐**

**\$45 Annual Membership with newsletter mailed to me      ☐**

**\$ \_\_\_\_\_ as a Special Gift to SAGE**





3017 E Commercial Blvd, Fort Lauderdale, FL 33308 (954) 776-4282

**Sunday November 13, 2016**  
**Cocktail Hour at the Bar (cash bar) 5pm Dinner Seating: 6pm**

**Starter:** Soup (Choice of Pasta Fagiola or Minestrone) or House Salad  
served with fresh-baked Crusty Italian bread with Garlic Dipping Sauce or Butter

**Entrée -choice of one:**

**Chicken Zuckerello's** Chicken breast stuffed with mushrooms, prosciutto, roasted peppers, & Rosemary in a Marsala mushroom sauce. Creamy mashed potatoes & fresh vegetables.

**Chicken Parmigiana** (cutlet topped with tomato sauce & mozzarella cheese) with a *side* of Linguini Pomodoro & chef's vegetable of the day.

**"Sunday Gravy" Dinner** Meatball, Italian Sausage, Braciola with Ziti topped with Ricotta Cheese in a Pomodoro Sauce. (Mama's gravy – i.e., sauce!)

**Shrimp Scampi** Large Shrimp tossed with Angel hair pasta, capers, garlic, cherry tomatoes. In a white wine & butter sauce.

**Dessert:** Tiramisu or Key Lime Pie (or Sugar-Free Dessert -upon request)

**Beverages:** Coffee or Decaf or Hot or Iced Tea or Fountain Soft Drinks

**Pricing: \$24 @ Members or \$27 @ Non-Members**

Includes Meal, Beverage (as above), any Tax and Tip

Cocktails & Wine & Beer or Espresso & Cappuccino available on a Cash-Bar basis -NOT included in price

**Reservations Close NO LATER THAN: Wednesday, November 9, 2016 by 1pm**

**NOTE: Due to Guarantees Made to the Venue, there can be no Refunds After this Date**

**If you arrive at Zuckerello's without a paid reservation, there will be a \$5 p/p surcharge at the door -if a table is available!**

**ZUCKERELLO'S Welcomes SAGE**

#\_\_\_ MEMBERS @ \$24.00 & #\_\_\_ NON-MEMBERS @ \$27.00 My Phone Number: \_\_\_\_\_

Name: \_\_\_\_\_ Write-in Your Entrée Choice: \_\_\_\_\_

Name: \_\_\_\_\_ Write-in Your Entrée Choice: \_\_\_\_\_

Name: \_\_\_\_\_ Write-in Your Entrée Choice: \_\_\_\_\_

**Mail with Payment to: SAGE at PO BOX 70516, OAKLAND PARK, FL 33307**

**Questions: Call the SAGE office at (954) 720-0833**

**A SAGE-SPONSORED ACTIVITY**





# You're Invited to the SAGE HOLIDAY Party at

Sunday, December 11, 2016

2:30 pm - 5:30 pm

1103 N. Federal Highway, Pompano Beach, FL 33062 (954) 785-0226

At the Pompano Beach Municipal Golf Course



Restaurant  
Patio Bar  
Banquets



**CASH BAR 2:30—3:30 pm in the Lounge**

(Depending on Weather, Outside Seating Area may be available)

**Cheese, Crackers & Fresh Fruit Buffet in the Pines Room—Opens at 3:30 pm**

**Starter: Traditional Caesar Salad**

**Entrée—Choice of One**

**Grilled Chicken Breast with Balsamic Drizzle**

**Grilled Salmon in Beurre Blanc Sauce**

**Ginger Soy Marinated Sirloin Steak (Served Medium)**

**all with Red Smashed Potatoes & Seasonal Vegetables, Rolls & Butter**

**Dessert: Decadent Bread Pudding with Jack Daniel Bourbon Sauce**

(or Sugar-Free Dessert on request—**PLEASE INDICATE ON RSVP BELOW**)

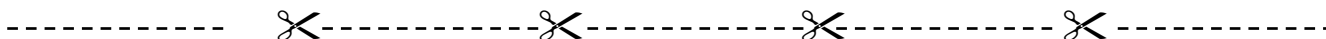
**Beverages:** Coffee or Decaf , Hot or Iced Tea, or Fountain Soft Drinks



**Reservations close no later than Wednesday, November 30, 2016 at 1:00 pm**

NOTE: This is a Capacity Limited Event to the First 64 Registered Guests

There are NO REFUNDS! Members' Price partly subsidized by SAGE



**SAGE HOLIDAY PARTY AT GALUPPI'S**

\_\_\_\_\_Members @\$26.00 \_\_\_\_\_Non-Members @\$32.00 Phone: \_\_\_\_\_

NAME: \_\_\_\_\_ Entrée Choice: \_\_\_\_\_

(check if sugar-free dessert ☐ )

NAME: \_\_\_\_\_ Entrée Choice: \_\_\_\_\_

(check if sugar-free dessert ☐ )

NAME: \_\_\_\_\_ Entrée Choice: \_\_\_\_\_

(check if sugar-free dessert ☐ )

Mail with Payment to SAGE at P.O. Box 70516, Oakland Park, FL 33307

Questions? Call SAGE at 954.634.7219

A SAGE-Sponsored Activity