

The SAGE

The Newsletter of SAGE of South Florida

April 2016

LGBT AGING ISSUES TASK FORCE ESTABLISHED

by Ron Wudarsky, Editor, The SAGE

The U.S. Congressional LGBT Equality Caucus, formed in 2008, recently created the LGBT Aging Issues Task Force, a new bipartisan group to examine the unique challenges and vulnerabilities faced by LGBT elders. South Florida is well represented on the task force. Rep. Ted Deutch (D-FL), who represents Broward and Palm Beach counties, will serve as chair for the task force. Rep. Lois Frankel (D-FL), who represents parts of Broward and Palm Beach counties, Rep. Ileana Ros-Lehtinen (R-FL), who represents Miami-Dade county, and Rep. Patrick Murphy (D-FL), who represents northern Palm Beach, Martin and St. Lucie counties, will also serve on the ten-person task force.



Rep. Ted Deutch

According to the statement announcing the task force, the group intends to push for legislative and administrative action to protect LGBT elders. "With 76 million Baby Boomers entering or nearing retirement and more than 44 million Americans already over the age of 65, we cannot afford to ignore the unique challenges faced by LGBT seniors, especially in communities with large retiree populations like South Florida," Rep. Deutch said. "The House Equality Caucus is committed to advocating for their needs, and I am honored to take the lead with our new aging task force."

Rep. Mark Takano (D-CA), a co-chair of the LGBT Equality Caucus stated, "The Aging Task Force will become an important resource and advocate for a community of people that often experience social and cultural isolation as they age. I'm grateful to Congressman Deutch for chairing the task force and I look forward to shedding light on an issue that deserves our attention."

Roddy Flynn, executive director of the LGBT Equality Caucus, said in a statement "Too many elderly LGBT people are forced to go 'back in the closet' out of fear of discrimination or harassment from caregivers and housing providers. LGBT elders also suffer from higher rates of poverty, are more likely to live alone and lack any close relatives to call for help. These challenges are in addition to the declining health, diminished income and loss of friends and family that all older Americans face. Despite advances in civil rights, LGBT elders remain one of the most invisible, underserved and at risk populations among elders in the United States."

For more information about the Equality Caucus or the LGBT Aging Issues Task Force contact Roddy Flynn at 302-897-7199 or anthonyflynnjr@gmail.com.

All Copy Deadline: 8th of the Month

Email to Editor: sagesofl@gmail.com attn: Editor
Website: www.sagewebsite.org

OFFICERS

President Carl M. Galli
Vice President Ron Catena
Secretary Ann C. Smith
Assistant Secretary Frank Piasecki
Treasurer Allen Churchman

BOARD MEMBERS AT LARGE

The Board of Directors will change following the April 3, 2016 Annual Meeting.

Carl Barton, John Chandler, Nancy Drennen,,
Marty Horowitz, Lee Lawson, Patrick Vida, Bruce Williams

COMMITTEE ASSIGNMENTS

Archivist Ann Smith
Book Club Philip Collier (F)
..... Alan Dorfman (F)
Computer Club Ken Goodman (F)
Education Lee Lawson
Funding Marty Horowitz
..... Patrick Vida
Lunch and Learn John Chandler
Lunch and Learn Setup Ron Catena (F)
..... Kathy Macchio
..... Michael Gagne
Membership Ann Smith (C)
..... Nancy Drennen
..... Allen Churchman
SAGES of SAGE Frank Piasecki
SAGE Men's Drop-In Ron Catena (C)
..... Carl Barton (F)
SAGE Men's Night Out John Chandler
Movie Club Carl M. Galli (F)
..... Marc Flanagan
..... Michael Vita
Newsletter Editor Ron Wudarsky
Newsletter Advisory Ken Goodman
Office Manager Allen Churchman
Assistant Office Manager Terry Feathers
Pride Center (SAC) Liaison Bruce Williams
Public Affairs Ron Catena
SAGE on the Border/Alternatives Ann Smith (C)
..... Caroline Leto (F)
..... Frank Piasecki (F)
SAGE Women Nancy Drennen
..... Jean Johnson (Advisory)
Social Activities Ron Catena (C)
Support Leo Glickstein
..... Inez Pasher
Volunteer Coordinators Frank Cavanaugh
..... Ken Moore
Newsletter Mailing Ron Catena (C)
..... Terry Feathers (F)
Webmaster Ron Wudarsky
Website Advisory Ken Goodman

(C)= Chairperson
(F)= Facilitator

SAGE Editorial Policy

SAGE welcomes contributors to this newsletter. An author may request their entry to be "anonymous." However, the submission as received by SAGE must be accompanied by the full name and address of the author. Items will be published at our discretion. If we feel that we cannot publish a submission anonymously, we will contact the author. We reserve the right to edit items for size considerations, clarity or standards of decency.

Cover Story: LGBT AGING ISSUES TASK FORCE ESTABLISHED

SAGE Mission Statement	1
SAGE Advertising Policy	1
SAGE Friendly Support	1
Reminder from the Board.....	2
SAGE Members in Need	2
Sharing SAGE with Others	2
SAGE Meetings	3
SAGES of SAGE.....	4
SAGE on the Border/Alternative.....	4
SAGE Spotlight.....	5,6
Social-Lites.....	7
See You at the Movies	8

FRIENDLY SUPPORT PROGRAM

We'd like to think we are not merely fair weather friends, but people who really care about our SAGE family. If you know of any SAGE member who would appreciate a friendly call, is sick, in the hospital, recently lost a loved one, or just needs a note of cheer, please contact: For women — Inez Pasher @ 954.563.2814. For men — Leo Glickstein @ 754.307.2495.
This is a SAGE sponsored activity.

SAGE MISSION STATEMENT

SAGE of South Florida is a non-profit organization for Senior action in a Gay Environment to enrich the lives of the GLBT senior community through membership inclusive of age, gender, race, nationality and religion. We believe this can be accomplished by sponsoring social alternatives To provide personal interaction, offering educational opportunities to deal with the special needs of aging, and promoting contact with the isolated and homebound persons of our community. SAGE is also an advocate for the concerns and needs of the senior community at large, providing referral information on community resources and promoting inter-generational communication in the GLBT community. SAGE was founded in 1994 as a Florida "not for profit." Corporation. (Federal Tax-Exempt status of 501(c)3 allowing tax-deductible donations.)

SAGE ADVERTISING POLICY

We no longer accept paid ads in the SAGE Newsletter. This was decided by the SAGE Board. We will, at our discretion, occasionally run a PSA or other nonprofit advertisement. We thank our previous advertisers for their support. Appearance of an advertisement in this newsletter does not constitute endorsement by SAGE of South Florida, Inc. of the service being offered.

Copyright 2016 SAGE of South Florida, Inc. All rights reserved. (Except excerpts)

SHARING SAGE WITH OTHERS

Reconnecting with old friends and meeting new acquaintances is a great part of the SAGE tradition. We invite you to share this tradition by inviting someone new to SAGE to one of our many SAGE-sponsored events. Share the camaraderie and support found among SAGE members with others.

When you invite someone new to any SAGE-sponsored events and that friend joins SAGE, he or she will become a SAGE of South Florida member for the reduced fee of \$25 for their first year of membership.



**Join the SAGE Group
on Facebook:
'SAGE of South Florida, Inc.'**

SAGE MEMBERS IN NEED

Please contact the AADRC (Aging and Disability Resource Center) @ 954.745.9779. It is a one-stop center for information and referral services available to seniors and their care-givers in our community.

REMINDER FROM THE BOARD

IF YOU RESERVE A PLACE AT THE 'LUNCH & LEARN' AND YOU DO NOT ATTEND, YOU ARE STILL RESPONSIBLE TO SAGE FOR PAYMENT. WE MUST GIVE THE CATERER AS EXACT A COUNT AS POSSIBLE BASED ON YOUR RESERVATION. THE CATERER MUST BE PAID WHETHER OR NOT YOU SHOW UP.

**SAGE of South Florida
is pleased to present
a lecture by Dr. F. Anthony Del Nuovo
"The Stages of Human Development"
"Where are you in your personal cycle?"
Tuesday April 5, 2016 at 1:15 pm
The Pride Center at Equality Park**

12:30 pm, April 2, 2016

**HERB SKOLNICK COMMUNITY CENTER
800 S.W. 36th Avenue, Pompano Beach, FL**

RESERVATIONS REQUIRED!!!!!!!!!!!!

Members with reservations: \$14.00

Guests: \$19.00

Everyone Pays at the Door.

Doors Open at 12:00 pm

If you arrive early, please make yourself comfortable in the lobby and meet and mingle with other SAGE members and their guests.

**Reservations must be made by 12:30 pm
on the Thursday preceding
the Luncheon by calling
the SAGE office at**

954.634.7219.

The caterer must have a final count.

Our Speakers: Florida Matters

– Making Your Vote Count with Carol

Smith, Past President of the League of Women Voters of Broward County, and **Dr. Margery Marcus**, Chair of the League's Education Committee. The League of Women Voters, a nonpartisan political organization, encourages informed and active participation of citizens in government through education and advocacy.



A SAGE – Sponsored Activity

April Lunch & Learn Menu

- Romaine Hearts Salad
- Rigatoni with a Beef Bolognese Sauce
- Flounder Fillet with Lemon Sauce
- Grilled Chicken available
- Poached Potatoes and Zucchini
- Tiramisu

The Daily SAGE

Mondays

Every Monday...11:00am

SAGE on the Border/Alternatives

Volen Center in Boca Raton

Every Third Monday...4:00pm

See You at the Movies (Dinner to follow)

Pride Center

Every Fourth Monday...5:30pm

Men's Night Out

Tropics

Wednesdays

Every Wednesday...1:00pm

Men's Drop-In

Pride Center

Every Wednesday...4:00pm

Computer Club

Pride Center

Thursdays

Second Thursday... 12:00pm

Women's Luncheon

Golden Coral in Tamarac

Third Thursday...10:45am

SAGES of SAGE

Pride Center, Room 208

Saturdays

First Saturday...9:30am

SAGE Board Meeting

Skolnick Center in Palm Aire

First Saturday...12:30pm

Lunch & Learn

Skolnick Center in Palm Aire

Second Saturday...11am

Book Club

Stonewall Library

SAGE Sponsored Activities

SAGE COMPUTER CLUB KEN GOODMAN



Do you want to catch up to your grandkids or sons and daughters? Come and enjoy learning about technology at the SAGE Computer Club. Would you like to feel more confident when using your computer, smart phone, tablet, or any other type of internet connected device? You should come and join us at the SAGE Computer Club. Bring your questions and problems and we will try to help you solve them. No question is too basic, we want everybody to learn and become better at using their devices. If you have a laptop computer, smartphone or tablet you can bring it to help us resolve your problem. We discuss the Windows, OS/X, Android, Windows 10 Phone and Apple iOS operating systems. The Computer Club meets every Wednesday at 4:00pm for at least an hour. Any new Computer related news is discussed, followed by the issues you wish to bring or a current topic of interest. Bring your questions and problems and we will try to help. Also, if you wish, you can join us for dinner after the meeting at a nearby reasonable gay friendly restaurant. The meetings of the SAGE Computer Club are held at the **Pride Center facility on Dixie Highway** Building A in the AV Room 206 on **Wednesdays** at 4PM. Call for directions if you need them at 954-634-7219 or the Pride Center's switchboard at 954-463-9005.

SAGE WOMEN @ GOLDEN CORRAL NANCY DRENNEN



Where: Golden Corral.
7401 Commercial Blvd. Tamarac
Phone: 954.623.6400
When: 12:00pm, 2nd Thursday of every month.
Call Nancy @ 954.741.1540 for reservations.

SAGE BOOK DISCUSSION GROUP PHILIP COLLIER & ALAN DORFMAN

W. B. Yeats said that nuns and mothers worship images of timeless perfection – and, often, so do gay men. Whatever else drives the characters at the center of Neil Bartlett's novel **Ready to Catch Him Should He Fall**, they are haunted by the kind of loss that Tennessee Williams rendered so poignantly, the gradual destruction of innocence and youth. Please consider joining the discussion of the SAGE Book Group at the Stonewall Library, 1300 E. Sunrise Blvd., Ft. Lauderdale when it meets on April 9 from 11 am to 12 noon. All readers are welcome - no reservation is required. For information, please contact Philip 443.614.7135 or Alan 561.385.8260.

SAGE MEN'S NIGHT OUT JOHN CHANDLER



We recently changed the format of our Men's Singles Night to incorporate all our Male members & their guests. Now, whether you're a single or in a couple, we welcome you. If you are a man who enjoys the company of other men, then we have an evening for you. Every 4th Monday of every month, SAGE Board member, John Chandler, co-ordinates cocktails and dinner at Tropic's restaurant in Wilton Manors. Cocktails, lively conversation, and meeting and making friends begin at 5:30pm. At 6:30pm the party moves to the dining room where we enjoy a terrific "ten for ten" dinner. For reservations, please contact John Chandler @ 954.933.2963 or e-mail him at stonyman4u@aol.com.

ATTENTION SAGE MEMBERS

Due to the increased cost to mail the newsletter to those who do not wish to receive it via e-mail or pick it up at The Pride Center, the SAGE Board decided to charge a \$10 surcharge to the \$35 annual membership fee to offset the costs of mailing. Please note on the membership form below if you wish to receive the newsletter, and if so, do you wish it be sent to you via e-mail or the postal service. Thank you.

SAGE WANTS YOU!!!

PLEASE JOIN OR RENEW TODAY

NAME: _____ Birthday: Month: ____ Day: ____

ADDRESS: _____

CITY: _____ STATE: ____ ZIP: _____

PHONE: _____ CELL: _____

E-MAIL: _____



CIRCLE ONE: RENEWAL NEW MEMBER

Newsletter Mailing Options:

1. I do not want the newsletter mailed to me ☐
2. I want to receive the newsletter electronically only. ☐
3. I want the newsletter mailed to me at the cost of \$10 making my membership \$45.00 ☐

I have enclosed:

\$300 for my Lifetime Membership ☐

\$35 for my Annual Membership ☐

\$45 Annual Membership with the Newsletter mailed to me ☐

\$_____ as a special Gift to SAGE

Mail To: SAGE of South Florida, PO Box 70516, Oakland Park, FL 3330

SENIOR ACTION IN A GAY ENVIRONMENT

SAGES OF SAGE FRANK PIASECKI

The February SAGES OF SAGE monthly meeting was at-attended by several new participants. We meet once a month at The Pride Center and the format for the group experience is to respond to a question posed by the moderator. The format is working out to be successful because everybody is given the opportunity to express views and opinions in a non-threatening atmosphere. It also encourages all of us to not only think quickly but also to hear the insights and viewpoints of others--and that can be fascinating. So please consider joining us on the third Thursday of each month at 10:45 am. We meet in Room B-208 until lunch time. After the meeting those who wish to "lunch together" are encouraged to do so. Remember, there is no reason to sit home with little to do when you can spend an enjoyable day inter-acting with your peers in a co-ed environment. Mark your calendars for April 21 and May 19 and check us out. And, EVERYBODY is welcomed.



SAGE ON THE BORDER/ ALTERNATIVES CAROLINE LETO/FRANK PIASECKI

Where: the Volen Center

1515 West Palmetto Rd., Boca Raton


When: Every Monday from 11AM to 1PM.

Welcome everyone, no reservation required.

Please call the Volen Center to see if it is open as the Center closes for holidays. 561-395-8920

This is a SAGE sponsored activity.

*A Progressive Community in the Catholic Tradition
Where We Welcome and Appreciate Diversity!*



Mass Times:
Wednesday 7:00 PM
Saturday 5:00 PM • Sunday 10:30 AM

101 N.E. 3rd St.
Ft. Lauderdale, FL 33301

954.731.8173

www.stsfrancisandclarc.org

Deric Bownds' Piano Recital



**SAGE
STORY**

POTLIGHT

SAGE Valentine's Day Celebrations



Some photos contributed by John Harris, Rex Coston, Allen Churchman and others.

SOCIAL LITES

Ron Catena



I want to start off with a great big thank you to **Dr. Deric Bownds** for the wonderful piano recital he gave on February 22nd at The Pride Center where Deric played a selection of classical favorites. Obviously, the community was eager to hear Deric play once again. Nothing is more reward-

ing than to see our volunteers continuing to add additional seating to accommodate all of those who showed up to enjoy an afternoon of good music. I am pleased to report that over one hundred people attended, many from the community at large. President Carl closed the event saying, "It is a marvel that one person can be so accomplished in one area, as a research scientist, let alone in a second, which can be equally demanding, as a classical pianist." Thank's for sharing your talents with us Deric. Bravo!

President Carl was absolutely committed to bringing back the **Annual SAGE Picnic**, which was a popular event for years and put on hold for the past two years. He has selected a menu that will satisfy everyone. In fact, when I first looked the menu over I was very impressed since Carl is not a cook. He uses his new oven to store magazines. The picnic will take place at T Y Park in Hollywood. We have reserved **Pavilion 4**, which is close to parking and comfort facilities. **Please bring a folding chair or blanket to sit on.** Picnic tables and benches are available but we do anticipate a good turnout. After lunch, those who have blankets will organize a "blanket toss". Carl has volunteered to be the first contestant. Reserve now. See the enclosed flyer/reservation form or go to the SAGE of South Florida website. A fun time will be had by all. The picnic will be held on **Saturday, April 9th from 11 am until 2 pm.** Our **Annual Meeting Luncheon and Awards Ceremony** will be held on **Sunday, April 3rd** at the lovely Embassy Suites Hotel at 1100 SE 17th Causeway. Drinks (cash bar) and a Social Hour will be held from 2 to 3 pm on the terrace followed by a Sunday dinner in our private dining room. Entertainment by world renowned tenor, James Perkowski. Several of our members will be recognized for their volunteer work. This is a must attend event. The menu is sumptuous and the event is reasonably priced.

The **Valentine's Day party at Cafe Primavera's** new location (2500 E. Commercial Blvd.) was a huge success. Cafe Primavera is a tastefully decorated dining room, almost New Yorky bistro-style, with excellent food and efficient friendly service. **Thanks to Chef Giacomo and his staff** for all they do for SAGE.

Thanks to all of you who regularly attend SAGE events, and to those of you who have not been attending try us! We

know you will have an enjoyable time. The social committee works hard for the membership.

CORRECTION: We apologize for the error in The SAGE March issue. The Social Lites mistakenly said the events were in February when in fact they were January 2016 events. Sorry for the confusion.

This is a SAGE Sponsored Event

NOTES FROM THE MEN'S DROP IN

Ron Catena

Once again, in keeping with the Drop In group's policy of celebrating every holiday, we had a fun-filled St. Patrick's Day Celebration with food, music, and a sing-a-long as well as a St. Patrick's Day trivia quiz. Captain Carl Barton was in charge of finding a piano player. I understand he auditioned several pianists throughout the region, travelling from one piano bar to another to find just the right person. He certainly did well and we all enjoyed the music. The food was good and the dessert was filled with home-baked goodies prepared and donated by Patrick Vida. Thanks again Patrick. The tables were set up in a u-shaped configuration so that we all faced the piano. Thanks to all of the volunteers.

Our Drop In group continues to grow. In fact, the group has become so popular that members are arriving early to chat in The Pride Center's lobby before moving to the meeting room. After the first hour we take a break, and in the past some members would leave. Now I notice that more members stay for the second hour, which is usually moderated by Carl Barton. When Carl is not available we have the very capable Dr. David Goldberger moderating. All this leaves me to believe that "we must be doing something right".

We have a very diverse group of guys who are willing to listen, laugh and learn. The topics are varied and usually very current. I thoroughly enjoy hearing different viewpoints offered by a savvy, well-read sophisticated group of men of significant accomplishment. No topic is off limits; all opinions are respected. Come, join us. We meet every Wednesday at 1:00 pm at The Pride Center.

As we all know, socializing is very important as we grow older. A special hello to Jim Anderson. It was great to see Allen Sandler return to his favorite seat. Come see us. We will welcome you warmly.

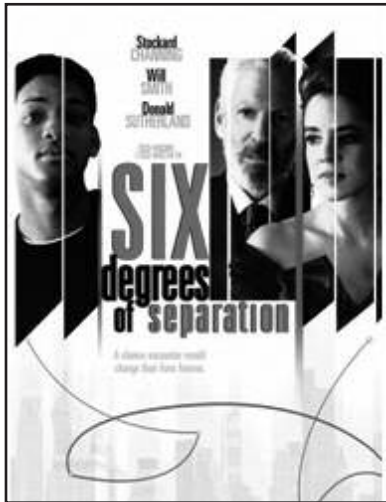
This is a SAGE Sponsored Event

This is a SAGE Sponsored Event
**SEE YOU AT THE
 MOVIES**



with Carl M. Galli, Marc Flanagan & Michael Vita

The SAGE movie for April, 2016 is **“Six Degrees of Separation”** (SDOS). Based loosely on a true story, this 1993 production was adapted from the Broadway stage with the same name that premiered three years earlier. Although most individuals who viewed (or alluded to) the movie refer to Will Smith’s performance as “Paul Poitier- Kittredge”, that of Stockard Channing (as Ouisa Kittredge) was noteworthy for a number of reasons. She was nominated for Oscar and Golden Globe Awards as Best Actress, played the same role for an extensive period while SDOS was on Broadway and was also nominated for a Tony Award as Best Actress.



Married couple, Ouisa and Flan (played by Donald Sutherland) try to curry favor with a fellow art dealer visiting from abroad (Ian McKellen) by lavishing him over cocktails in their co-op overlooking NY’s Central Park. The rest of the evening will be memorable, as a stranger (Paul), whom

the couple would customarily never encounter, enters their apartment bleeding due to an alleged mugging. Paul, claiming acquaintanceship with their kids, gets to work his confidence skills quite masterfully. He tells anecdotes from his vagabond existence, says he’s the son of a pioneer Hollywood figure and offers roles in a stage production revival. This reaps dinner, a monetary amount (a fraction of what a moderately priced restaurant in NYC would charge) and an invitation to spend the night with the Kittredges. The relationship goes south due to the couple objecting

to how Paul spends the money, which results in Paul being ordered to leave. Subsequently, the couple shares their encounter with Paul to anybody who cared to hear it, upstaging weddings and religious initiations. The Kittredges learn that they weren’t the sole recipients of Paul’s impromptu visits. After realizing they have been had, Paul’s victims enlist their children to discover how Paul obtained their information, which leads to a classmate, played by Anthony Michael Hall (SNL and numerous “brat pack” movies). Eventually, Paul told a young, struggling couple that he was homeless because his father (Flan) had disowned him. Paul obtains money from the male thru seduction claiming he needed to travel for a reunion with Flan. After reading about how this pair’s relationship dissolved (and how Paul was indirectly responsible for the outcome) in a newspaper article causes Paul to reach out to Ouisa. Her ambivalence towards Paul kicks in, which leads to Ouisa agreeing to have him come back into their lives under one tenuous condition.

SDOS presents biting satire concerning the shallowness of the upper crust and how life’s subtlest lessons can alter even the most jaded individual. The tango melody sets the pace, displayed by Paul’s storytelling abilities and how his associates respond to his “dancing” abilities.

The film is rated R due to containing occasional profanity and male nudity (two scenes totaling 11 1/2 seconds). SDOS will screen without subtitles on Monday, April 18 at 4pm in Room 204 of the Pride Center. The 112 minutes of air time will allow viewers the opportunity to discuss the proceedings as we dine afterwards.



SAGE BIRTHDAYS FOR THIS MONTH

The SAGE Board would like to acknowledge the following members whose birthdays are this month as well as any other member whose birthday that we don't have.

If, when you renewed your membership or became a new member you did not give us your birthday, you may call the office and leave the information at 954.634.7219 or e-mail us @ sagesofl@gmail.com.

First Name	Last Name	Birthday	First Name	Last Name	Birthday
CARLA	EISENBERG	Apr-01	JULIA	LANDIS	Apr-13
RONALD	SEIDLE	Apr-02	ROBERT J.	STASTNY	Apr-13
TED	SINGER	Apr-02	ELIOT H.	COHEN	Apr-14
BRUCE T.	WILLIAMS	Apr-02	GIBSON BELL SANDY	SMITH	Apr-15
JEFF	STERN	Apr-03	JOHN	CHANDLER	Apr-16
EDWARD	KUNOFSKY	Apr-04	FRANK W.	CAVANAUGH	Apr-20
RICK	OVERTON	Apr-05	LARRY	CUTLER	Apr-20
JAMES V.	FICKE	Apr-06	BILL	FARRINGTON	Apr-21
ERNIE	BLAKENSHIP	Apr-07	MICHAEL	KELLER	Apr-21
MARTIN	HOROWITZ	Apr-08	ELAINE MICKI	MURPHY	Apr-21
JEAN	JOHNSON	Apr-09	TOM TOMCAT	PENCE	Apr-23
SHARON	MC LEAN	Apr-10	FRED A.	VEGA	Apr-28
BUDDY	STEIN	Apr-10	SHAWN	FANSHIER	Apr-29
LEO	VIOLETTE	Apr-10	JOHN G.	HARRIS	Apr-30
LINDA	ARECTOS	Apr-11			
CHARLES R.	BUCHANAN JR.	Apr-12			

New Members

JAMES	ARMSTRONG	Feb-16
KAY	BEATTIE	Feb-16
TERRY	ELDER	Feb-16
KEN	GAULT	Feb-16
GENE	MAJKA	Feb-16
MIKE	PETERSON	Feb-16
BILL	RAFTERY	Feb-16
PAUL	ROCK	Feb-16
ED	SCHUMACHER	Feb-16
BILL	SORN	Feb-16
WALT	WACHTER	Feb-16

5 Year Anniversaries

LEE G.	LAWSON	Feb-11
TOM (TOMCAT)	PENCE	Feb-11

10 Year Anniversaries

BOB	ADAMS	Feb-06
-----	-------	--------

If you have had an anniversary with SAGE for either 5, 10, 15 or 20 years

and you have not received your pin, please call the SAGE office (954.634.7219) to pick it up.

SAGE of South Florida

Financial Report for Fiscal Year ending December 31, 2015

	2015 Budget	YTD Actual	Variance Over (Under) Budget
REVENUE:			
Advertising (1)	4500	0	(4500)
Contributions (2)	11,000	20,176	9,176
Membership Dues	12,100	8,945	(3,155)
Interest Income (3)	200	132	(68)
Raffle Income (4)	600	284	(316)
Miscellaneous Revenue	100	0	(100)
Excess Income- Events (5)	0	36	36
TOTAL REVENUE	28,500	29,573	1,073
EXPENSES:			
Insurance	1,600	1,528	(72)
Newsletter (6)	10,800	9,360	(1,440)
Office Supplies (7)	3,000	2,403	(597)
Postage (8)	2,400	1,997	(403)
Rent (9)	6,600	6,663	63
Community Activities (10)	3,000	1,536	(1,464)
Miscellaneous Expense	100	96	(4)
Special Events Costs	1,000	0	(1,000)
TOTAL EXPENSE	28,500	23,583	(4,917)
NET REVENUE/(EXPENSE)		5,990	

NOTES TO FINANCIALS:

- (1) SAGE is no longer running ads in the monthly newsletter.
- (2) Member's Contributions for annual Give From the Heart Campaign, Year End Campaign and a Bequest.
- (3) Interest income derived from a Certificate of Deposit with Bank United.
- (4) Raffle income is from a 50/50 raffle held at monthly Lunch & Learn.
- (5) SAGE Social & Educational activities generated revenue of \$20,449 and expenses of \$20,413 resulting in a Special Event Surplus of \$36.
- (6) Monthly newsletter costs include printing and envelopes.
- (7) Office supplies include office operation, telephone, computer software and website expense.
- (8) Postage includes costs for membership mailings and monthly newsletter.
- (9) Rental costs are for the office space that SAGE maintains at the Pride Center.
- (10) Community activities includes Pridefest and other SAGE sponsored events at the Pride Center.

<<Plus ça change, plus c'est la même chose>> NOT!

by Carl M. Galli, President, SAGE of South Florida

Pretty much everyone has heard French journalist Jean-Baptiste Alphonse Karr's rather cynical observation: **"The more things change, the more they stay the same."** (From his 1849 masterwork *Les Guêpes*.) And, especially during this rather chaotic National election year, I wager that more and more of us are tempted to agree with it. But I hope that there are several of us who agree with my monosyllabic riposte, borrowed from Mike Myers' character (in "Wayne's World"). Because I am optimistic that within the framework of SAGE of South Florida (if not within the National context) **Change is Real – and Change is Good.**

April is a time of reawakening and growth. But it's also a time of Recognition. I thank the following people for their contributions to SAGE of South Florida throughout 2015:



Michael Gagne – Our **Spirit of SAGE Award Recipient** – for all his Efforts behind the scenes in keeping us tied into the Community and The Pride Center.

Terry W. Feathers – Our **Male Volunteer of the Year** – for selflessly giving of his time and energy over-and-over again. Without being asked.

Caroline Leto – Our **Female Volunteer of the Year** – for her Leadership and Guidance of SAGE on the Border/Alternatives (Boca Raton) for over 7 years.



John J. Gearrity - for whom we have renamed our **Donor Award** – for all he gave to SAGE of South Florida from his heart and soul – as well as for his final bequest which enabled us to give back to our Members and the Community.



And I must acknowledge and thank two gentlemen who are leaving our Board for other pursuits: **Ken Goodman**, who has been a Director, Vice President and President over the course of serving our SAGE for over 15 years. And his companion, **John G. Harris**, who has served on our Board for over 7 years.

Which leads me to Our New 2016 Board. Twelve will be returning upon reelection: **Captain Carl Barton, Ron Catena, Brother John Chandler, Allen K. Churchman, Nancy Drennen, Dr. Marty Horowitz, Gary "Lee" Lawson, Dr. Frank Piasecki, Ann C. Smith, Patrick S. Vida, Esq., Bruce Williams, and myself.**

And I thank them all sincerely for helping to make it a collegial and productive experience.

continues on back page



This leaves three vacancies to be filled, by 3 candidates whom the Board has vetted and approved. Upon Election, they will take their places on our Board:

Kay Beattie – Has an Associate Degree in Business Administration. Retired following 40 years at the University of Michigan, where she was an Executive Assistant to the President, the Dean of the Graduate School or the Dean of the Undergraduate College. She volunteered for several political campaigns. She is skilled in Editing, Proofreading and Organization.

Terry W. Feathers – Studied Government & Political Science at Harvard. Received his BA in Government, American History & Writing from the University of Kentucky, Lexington. Worked as a Legislative Analyst for the Kentucky General Assembly and as an Administrative Assistant for the Kentucky Senate Majority Office. After retiring from State Government, he worked as a Seasonal Keeper for the Louisville Zoo. Skilled in PR, Consensus Building and Communications.



Ron Wudarsky – Received his BA in Public Relations (with minors in Business & Psychology) from West Virginia University, Morgantown. Among other positions, Ron has served as the Executive Director of Make-a-Wish Foundation/Hudson Valley, Mt. Kisco, NY. As well as Development Director of the Poverello Center (for which he continues to volunteer). Extremely skilled in Social Media & Marketing, he has served as an organizational spokesperson to the media & public. He recently was appointed as the Editor, Webmaster and FaceBook Administrator for SAGE of South Florida.

New people. New thoughts. New visions. New work to be done. Change begins.



Cubby Cunningham receives her 15 year pin and Lee Lawson his 5 year pin at the March Lunch & Learn.



Kinky Boots, Broward Center for the Arts, March 2, 2016



SAGE EVENT CALENDAR

April 2016

Sunday	Monday	Tuesday	Wednesday	Thursday	Friday	Saturday
					1	2 9:30 am SAGE Board Meeting 12:30 pm SAGE Monthly Luncheon & Learn @ Skolnick Center
3 2:00 pm SAGE Annual Meeting @ Embassy Suites	4 11:00 am SAGE on the Border/Alternatives	5 1:15 pm SAGE Lecture by Dr. Del Nuovo @ The Pride Center	6 1:00 pm Men's Drop-In @ Pride Center at Equality Park 4:00 pm Computer Club	7	8	9 11:00 am – 2:00 pm SAGE Annual Picnic @ TY Park 11:00 am SAGE Book Group @ Stonewall Library
10	11 11:00 am SAGE on the Border/Alternatives	12	13 9:00 am LGBT Senior Cultural Competency 101 @ The Pride Center 1:00 pm Men's Drop-In @ Pride Center at Equality Park 4:00 pm Computer Club	14 12:00 pm SAGE Women's Luncheon The Golden Corral in Tamarac	15	16
17	18 11:00 am SAGE on the Border/Alternatives 4:00 pm SAGE Movie "Six Degrees of Separation" at The Pride Center Room 204	19	20 1:00 pm Men's Drop-In @ Pride Center at Equality Park 4:00 pm Computer Club	21 10:45 am SAGES of SAGE Discussion Group	22 Passover Begins	23
24	25 11:00 am SAGE on the Border/Alternatives 5:30 pm Men's Night Out @ Tropics Restaurant	26	27 1:00 pm Men's Drop-In @ Pride Center at Equality Park 4:00 pm Computer Club	28	29	30

UPCOMING SAGE EVENTS:

To Be Announced in the May & June issues of The SAGE

Community Events:

LGBT SENIOR CULTURAL COMPETENCY 101: May 19 and June 15, 2016 from 9:00 am to 11:00 am at The Pride Center, RSVP to Bruce Williams at bwilliams@pridecenterflorida.org or 954.463.9005 ext. 109. Sponsored by SAGE, Our Fund and The Pride Center at Equality Park.

BALLET AND OPERA GROUP meets at The Pride Center at 12:30 pm in room 204 on the second and fourth Sunday of every month.

GLBTQ VETERAN'S DROP IN GROUP sponsored by the Gold Coast Chapter of AVER and SunServe every Tuesday from 5:30 – 7 pm at the Sunshine Cathedral

SAGE ANNUAL MEETING, LUNCHEON & AWARDS CEREMONY

SUNDAY

APRIL 3, 2016

2PM - 5PM



**EMBASSY
SUITES**

by Hilton

1100 SE 17th Street Causeway, Fort Lauderdale, FL 33316 (954) 527-2700

2-3pm Mixer on Terrace (Cash Bar) 3-5pm Sunday Dinner

MENU

~Starters~

California Baby Greens, Tear Drop Tomatoes, Beet Root & Carrot Ribbons
Balsamic and Ranch Dressings at Table

~ Entrée -Choice of one~

Sliced London Broil with Wild Mushroom Sauce

Shrimp Scampi Over Linguine

Chicken Key West (lightly battered Breast with Key Lime Butter & Capers)

Served with Oven Roasted Potato and The Season's Freshest Vegetables
Warm House made Rolls and Creamy Butter

~Dessert~

Decadent Chocolate Cake (Sugar-free dessert option, below)
Beverages at Table: Iced Tea, Coffee (Decaf and Hot Tea Available)

Entertainment by World-Renowned Tenor James Perkowski

For Your Listening & Dancing Pleasure

Pricing: \$27 @ Members & \$36 @ Non-Members*

Reservations Close No Later Than Wednesday, March 30, 2016

Note: the Hotel Charges a \$2 Self-Park Fee or a \$5 Valet Fee (Tell Attendant You're with SAGE to Get this Reduced Rate)
(*a portion of Costs has been subsidized by SAGE of South Florida)

SAGE ANNUAL MEETING & Sunday Dinner at EMBASSY SUITES

NO REFUNDS

MEMBERS @ \$27.00 & NON-MEMBERS @ \$36.00 My Phone Number: _____

Name: _____ Write-In Entrée: _____ Sugar-Free []

Name: _____ Write-In Entrée: _____ Sugar-Free []

Name: _____ Write-In Entrée: _____ Sugar-Free []

Name: _____ Write-In Entrée: _____ Sugar-Free []

Mail with Payment to: SAGE at P.O. BOX 70516 Oakland Park, FL 33307

Questions: Call the SAGE office at (954) 634-7219

A SAGE-SPONSORED ACTIVITY

SAGE Returns to TY PARK

TOPEEKEEGEE YUGNEE PARK 3300 N. Park Rd., Hollywood, FL 33021 -Pavilion 4
954-357-881

Saturday

April 9, 2016

11am – 2pm



Fresh-Chilled Double-Breaded Deli-Style FRIED CHICKEN

Mini Cuban Sandwiches: Layered with ham, roast pork, Swiss cheese & pickles

Crescent Roll Sandwiches: Filled with tuna, chicken, egg & ham salad

Deli-Style Coleslaw. Potato Salad. Smokehouse Bar-b-Que Baked Beans.
also Soft Rolls. Fresh Fruit or Melon (as available). Soda. Lemonade.

*Cost: Only \$12 @ Member or \$14 @ Non-Member

NO REFUNDS

You Must Reserve With Payment Received by 1PM on Wednesday, April 6, 2016

Please bring folding chairs and blankets. Thank you

Directions: From I-95, head west on Sheridan Street. Go north (right) on North Park Road. The park's entrance will be on the right (east) side.

***NOTE: TY Park Charges Admission Fees of \$1.50 per person (ages 6 and up) NOT Included in Above Costs**

Well-Behaved Pets on Leashes are Permitted by the Park

SAGE ANNUAL PICNIC at TY PARK

____ MEMBERS @ \$12.00 & ____ NON-MEMBERS @ \$14.00 My Phone Number: _____

Name: _____ Name: _____

Name: _____ Name: _____

Mail with Payment to: SAGE at P.O. BOX 70516 Oakland Park, FL 33307

Questions: Call the SAGE office at (954) 634-7219

A SAGE-SPONSORED EVENT

GIVE FROM THE



CAMPAIGN 2016

Just as March signals the return of Spring, it also signals the return of the SAGE Give From Your Heart Campaign. This fundraising event is critical to the ongoing mission of SAGE of South Florida. These funds are used to provide community service, along with benefits to our members. Please give generously to this worthwhile cause. The campaign will run for March, April and May.

SAGE'S 2015 GIVE FROM THE HEART CAMPAIGN

Name: _____ enclosed is a check for \$_____ as my donation
to SAGE's 2015 Give From the Heart Valentine's Campaign.

**As a 501©3 Nonprofit, any donations SAGE receives are tax deductible as allowed by
IRS laws and regulations.*

Mail your donation to: SAGE at: P.O. BOX 70516, Oakland Park, FL 33307
Questions? Call the SAGE Office at: (954) 634-7219 A SAGE-Sponsored
Activity

*Donors of \$500 or more will be listed as Archangels. All others will be listed as
Angels in future issues of the Newsletter.*

All are SINCERELY and GRATEFULLY APPRECIATED!