

# THE SAGE

The Newsletter of SAGE of South Florida

February 2014

## SAGE Turns 20 This Year

*Yes, SAGE turns 20 in September 2014. Your Board is working on a fabulous Birthday Party to celebrate this milestone in our history. We hope to see all our founding members and everyone who has shared some of SAGE of South Florida's history.*

*The following current members joined SAGE in 1994 or 1995. They are our longest active members. They include:*

GENE BIFULCO Dec-94	CHARLES R. BUCHANAN JR. Sep-94	MARALYN G. COHN Oct-94
JOYCE EDELSON Sep-94	MARC FLANAGAN Dec-94	PHYLLIS R. FOSTER Dec-95
JOHN GEARRITY Dec-94	JIM GUNTER Sep-94	GERALD HEINEMAN Dec-94
RICHARD HESS Oct-94	GODFREY ISAACS Dec-95	ALBERT C KOSOW Oct-94
VIRG LESCINSKI Sep-94	SYLVA LUFKIN Dec-95	LARRY McNEAR Dec-94
DAVID MILLAN Oct-95	BILL MULLINS Aug-94	ROBERT REBERNISEK Sep-95
RICHARD ROGERS Sep-94	GAYLE SCOTT Nov-94	JOEL TENDLER Sep-94
BRUCE TODRES Dec-94	NORMA WINGO Dec-94	GERARD ZELIN Sep-94
	JERRY ZYGMUNT Oct-94	

*Not only do we want to celebrate this momentous occasion but we would also like to look back and remember where we came from and how we got here. For this we need all our members support. If you remember any funny, interesting, important or special thing that has happened with your SAGE friends over the past years please, send us the information or data so that we can highlight some of these during the year in our newsletters. Also if you have early copies of the SAGE Newsletter or photos where you can identify the participants, please get them to us. We appreciate all our members and the fun and eventful road we as GLBT Seniors and their admirers have traveled.*

--Ken Goodman

## SAGE OF SOUTH FLORIDA, INC.

2040 N. Dixie Highway  
Wilton Manors, FL 33305

### Mailing Address:

SAGE of South Florida  
PO Box 70516  
Oakland Park, FL 33307  
Message Line: 954.634.7219

All Copy Deadline: 8th of the Month

Advertising Deadline: 1st of the Month

Email to Editor: [sagesofl@gmail.com](mailto:sagesofl@gmail.com) attn: Editor

Website: [www.sagewebsite.org](http://www.sagewebsite.org)

### OFFICERS

President	Kenneth Goodman
Vice President	Ron Catena
Secretary	Ann C. Smith
Assistant Secretary	Frank Piasecki
Treasurer	Inez Pasher

### BOARD MEMBERS AT LARGE

John Chandler, Nancy Drennen, John Harris, Gary Kempler, Gary "Lee" Lawson  
Frank Piasecki, Bruce Williams

### COMMITTEE ASSIGNMENTS

Advertising	Inez Pasher
Archivist	Hank Brooks
Book Club	Ruchard Hess (F)
	Philip Collier (F)
Computer Club	Ken Goodman (F)
Education	Bruce Williams
Funding	Gary Kempler (CC)
	John G. Harris
	Ron Catena
	Inez Pasher (CC)
	John Chandler w/ Leo Glickstein
	Ann Smith (C)
	Nancy Drennen
	Frank Piasecki
	John Harris
	Ron Catena (C)
	Bill Woodward (F)
	Norm Peters (F)
	John Chandler
	John Gearity (F)
	Carl M. Galli (F)
	Sharron Demarest
	Inez Pasher
	Deric Bownds, Ph.D
	Carol Youngblood
	Bruce Williams
	Gary "Lee" Lawson
	Nancy Drennen
	Gary "Lee" Lawson
	Bruce Williams
	Ron Catena
	Ann Smith (C)
	Caroline Leto (F)
	Larry McNear (F)
	Bruce Todres (F)
	Nancy Drennen
	Jean Johnson (Advisory)
	Ron Catena (CC)
	Inez Pasher (CC)
	Carl M. Galli (Advisory)
	Leo Glickstein
	Godfrey Isaacs
	Inez Pasher
	Frank Cavanaugh
	Ken Moore
	Les Oldenbusch
	Richard Bunyan

*Appearance of an advertisement in this newsletter does not constitute endorsement by SAGE of South Florida, Inc. of the service being offered. We thank our advertisers for helping us to pay for printing this newsletter.*

### SAGE Editorial Policy

SAGE welcomes contributors to this newsletter. An author may request their entry to be "anonymous." However, the submission as received by SAGE must be accompanied by the full name and address of the author. Items will be published at our discretion. If we feel that we cannot publish a submission anonymously, we will contact the author. We reserve the right to edit items for size considerations, clarity or standards of decency.

# Highlights

## SAGE Cover

### SAGE Turns 20 This Year.

Masthead	1
SAGE Mission Statement	1
SAGE Advertising Policy	1
SAGE Friendly Support	1
Reminder from the Board	2
SAGE Lunch & Learn	2
SAGE Members in Need	2
Sharing SAGE with Others	2
SAGE Meetings	3
SAGE Co-Ed Discussion Group	4
SAGE Camera Club	4
Social-Lites	5
SAGE Spotlight	7&8
Helpful Hints from the Desk of David Treece	9
See You at the Movies	10
Occasional Thoughts	11
Milestones	13

## SAGE FRIENDLY SUPPORT PROGRAM

We'd like to think we are not merely fair weather friends, but people who really care about our SAGE family. If you know of any SAGE member who would appreciate a friendly call, is sick, in the hospital, recently lost a loved one, or just needs a note of cheer, please contact:  
For women — Inez Pasher @ 954.563.2814.  
For men — Leo Glickstein @ 954.935.5799.  
This is a SAGE sponsored activity.

## SAGE MISSION STATEMENT

SAGE of South Florida is a non-profit organization for Senior action in a Gay Environment to enrich the lives of the GLBT senior community through membership inclusive of age, gender, race, nationality and religion. We believe this can be accomplished by sponsoring social alternatives To provide personal interaction, offering educational opportunities to deal with the special needs of aging, and promoting contact with the isolated and homebound persons of our community. SAGE is also an advocate for the concerns and needs of the senior community at large, providing referral information on community resources and promoting inter-generational communication in the GLBT community. SAGE was founded in 1994 as a Florida "not for profit." Corporation. (Federal Tax-Exempt status of 501(c)3 allowing tax-deductible donations.)

## SAGE ADVERTISING POLICY

Our monthly newsletter is partially underwritten by advertising revenue. We have a written fee schedule for various sizes and number of months. An insert, instead of display advertising, is also available for business and organizations at a very reasonable rate. Contact the SAGE office at 954.634.7219 or email at [sagesofl@gmail.com](mailto:sagesofl@gmail.com) for more information. Appearance of an advertisement in this newsletter does not constitute endorsement by SAGE of South Florida, Inc. of the service being offered. We thank our advertisers for helping us pay for printing this newsletter. Do you have friends or family who own a business? Ask them to place an ad in THE SAGE. We appreciate our business supporters. As members, let's support them in return.

## SHARING SAGE WITH OTHERS

Reconnecting with old friends and meeting new acquaintances is a great part of the SAGE tradition. We invite you to share this tradition by inviting someone new to SAGE to one of our many SAGE-sponsored events. Share the camaraderie and support found among SAGE members with others.

When you invite someone new to any SAGE-sponsored events and that friend joins SAGE, he or she will become a SAGE of South Florida member for the reduced fee of \$25 for their first year of membership.

## SAGE MEMBERS IN NEED

Please contact the **AADRC (Aging and Disability Resource Center)** @ **954.745.9779**. It is a one-stop center for information and referral services available to seniors and their care-givers in our community.

## REMINDER FROM THE BOARD

IF YOU RESERVE A PLACE AT THE 'LUNCH & LEARN' AND YOU DO NOT ATTEND, YOU ARE STILL RESPONSIBLE TO SAGE FOR PAYMENT. WE MUST GIVE THE CATERER AS EXACT A COUNT AS POSSIBLE BASED ON YOUR RESERVATION. THE CATERER MUST BE PAID WHETHER OR NOT YOU SHOW UP.

## MONTHLY "LUNCH & LEARN"

12:30 PM, February 1, 2014

**HERB SKOLNICK**

**COMMUNITY CENTER**

800 S.W. 36th Avenue, Pompano Beach, FL

**RESERVATIONS REQUIRED!!!!!!!!!!**

Members with reservations: \$14.00

All others: \$19.00

Everyone Pays at the Door.

Doors Open at 12:00PM

If you arrive early, please make yourself comfortable in the lobby and meet and mingle with other SAGE members and their guests.

Reservations must be made by 12:30PM on the Thursday preceding the Luncheon, as the caterer must have the final count. Please make reservations for the February "Lunch & Learn" with the SAGE office @ 954.634.7219.

### MENU

**Romaine Salad**

**Penne Verde**

**(in Cream & Spinach Sauce)**

**Tilapia & Salmon Mousse**

**(w/ Lobster Sauce)**

**Grilled Chicken**

**Green Beans**

**Flan w/ Caramel Sauce**

**February Speaker:**

**Doris Hass RN, CCM, CMC**

**"A New Twist on Intervention"**

**Senior Family Issues...**

**Help and where to get it!**

PAID ADVERTISING - PAID ADVERTISING - PAID ADVERTISING -

## Ft. Lauderdale PIZZA & PASTA

Serving Lunch & Dinner • Delivery after 4 pm



2100 East Oakland Park Blvd.  
Ft. Lauderdale, FL 33306  
One Block West of US 1

**954-566-5226**

[www.fortlauderdalepizza.com](http://www.fortlauderdalepizza.com)



**Peter Pan Diner**  
**Open 24/7**  
RESTAURANT • BAKERY • LOUNGE

- COCKTAILS • CATERING •
- BANQUET FACILITIES •
- BAKERY ON PREMISES •

1216 E. OAKLAND PARK BLVD., FORT LAUDERDALE, FL 33334

**954.565.7177**

**WWW.PETERPANDINER.COM**

**This is the Winter Wonderland  
of Gifts, Cards and Treats**



**With over 12,000 different items  
and 3000 greeting cards**

**This is the #1 store in all of Fort Lauderdale  
for all of your Holiday gift-giving needs!**

**2205 Wilton Drive Fort Lauderdale, FL**  
**Tel (954) 564-2987 visit us online: [tothemoonmarketplace.com](http://tothemoonmarketplace.com)**



## SAGE COMPUTER CLUB

KEN GOODMAN



Do you want to catchup to your grandkids or sons and daughters? Come and enjoy learning about technology at the SAGE Computer Club. Would you like to feel more confident when using your computer, smart phone, tablet, or any other type of internet connected device? You should come and join us at the SAGE Computer Club. We talk about how to use your computer more efficiently and you can ask questions about issues you are having with your devices. If you have a laptop computer you can bring it to help us resolve your problem. We discuss any topics you wish to ask about. They have included Cloud Computing, the Web, E-Mail, setting up your computer, personalizing the computer, Office software, multimedia software, use of Smart Phones and tablets, operating system utilities and maintenance software, security, etc.

We discuss the Windows and the Apple OS/X operating systems. For the Smart Phone and/or tablets, we will discuss operating systems including the Google Android, Windows 8.1 Phone & RT and Apple iOS.

The Computer Club meets every Wednesday at 4 pm for at least an hour. Any new Computer related news is discussed, followed by the issues you wish to bring or a current topic of interest. Bring your questions and problems and we will try to help.

Also, if you wish, you can join us for dinner after the meeting at a nearby reasonable gay friendly restaurant.

The meetings of the SAGE Computer Club are held at the **Pride Center facility on Dixie Highway** Building A in the AV Room 206 on **Wednesdays** at 4PM. Call for directions if you need them at 954.634.7219 or the Pride Center's switchboard at 954.463.9005.

***This is a SAGE sponsored activity.***

## SAGE ON THE BORDER/ALTERNATIVES

CAROLINE LETO/BRUCE TODRES



**Where:** the Volen Center

1515 West Palmetto Rd., Boca Raton

**When:** Every Monday from 11AM to 1PM.

**Welcome everyone, no reservation required.**

**Please call the Volen Center to see if it is open as the Center closes for holidays.**

***This is a SAGE sponsored activity.***



## WEDNESDAY MEN'S DROP-IN

RON CATENA



**Where:** The Pride Center.

**When:** Every Wednesday from 1PM to 3PM.

Welcome all men, no reservation required.

***This is a SAGE sponsored activity.***

## 1ST & 3RD THURSDAY CO-ED DISCUSSION

FRANK PIASECKI

**Where:** The Pride Center.

**When:** February 6th & 20th. 1PM

**Welcome to all, no reservation required.**

***This is a SAGE sponsored activity.***

## SAGE MEN'S SINGLES GROUP

JOHN CHANDLER



Are you a single man who enjoys the company of other single men? If you do then we have an evening for you. Every 4th Monday of every month, SAGE Board member, John Chandler, co-ordinates cocktails and dinner at Tropics restaurant in Wilton Manors. Cocktails, lively conversation and flirting begin at 5:30. At 6:30 the party moves into the dining room where we enjoy a terrific dinner followed by complementary coffee. Prices are reasonable and the food is always wonderful (as is the company).

**We usually wear red shirts so we can all recognize each other.**

**Our next dinner will be held on Monday, February 24, 2014.**

For reservations please contact **John Chandler @ 954.933.2963** or e-mail @ [stonymen4u@aol.com](mailto:stonymen4u@aol.com) and don't forget to wear your red shirt!

***This is a SAGE sponsored activity.***

## SAGE BOOK CLUB

RICHARD HESS & PHILIP COLLIER

**When:** February 8, 2014.

**Where:** Stonewall National Archives

**December Book:** *The Song of Achilles*, Madeline Miller

**Contact for information:** Richard Hess, 954.568.1592 or

Philip Collier, 443.614.7135

***This is a SAGE sponsored activity.***

## SAGE CAMERA CLUB

JOHN HARRIS

**Where:** The Pride Center.

**When:** Saturday, February 22, 2014 & March 22, 2014

**Meet-Up:** Tuesday, February 11, 2014

Meet at the Pride Center and carpool to the Riverwalk/Broward Center area.

**Welcome to all shutterbugs, no reservation required.**

***This is a SAGE sponsored activity.***

## SAGE WOMEN @ GOLDEN CORRAL

NANCY DRENNEN



**IMPORTANT! OUR VENUE HAS CHANGED!**

**Where:** Golden Corral.

7401 Commercial Blvd. Tamarac

**Phone:** 954.623.6400

**When:** Noon, 2nd Thursday of every month.

**Call Nancy @ 954.741.1540 for reservations.**

***This is a SAGE sponsored activity.***

**2013 Schedule: TBA**

## NOTES FROM THE SAGE CO-ED DISCUSSION GROUP (AT THE PRIDE CENTER)

Here in Fort Lauderdale we are indeed fortunate, as mature gay men and women, to have access to the Pride Center and to organizations of interest such as SAGE. There are many groups and activities we can join and participate in to help us with socializing and connecting with our peers.

The SAGE Co-Ed Discussion group might be just the place for you to meet others and to share your insights and experiences via this discussion group forum. Structured questions are asked of the group and participants are encouraged to respond with their thoughts and impressions. You might find the group of interest if

you like to share your viewpoints as well as hearing the views of others.

We have been meeting on the first and third Thursdays of each month at 1 pm at the Pride Center in Room B207. Everybody is welcomed and you may certainly bring a friend. Come and check us out! (For the month of February, we are scheduled to meet on February 6 and February 20<sup>th</sup>. Mark your calendars.)

--Frank

*This is a SAGE sponsored activity.*

## TIME TO GIVE FROM THE HEART!!!



Over the years our SAGE family has given generously from their hearts to the annual SAGE Give from the Heart campaign. Once again, we call upon our membership to support the programs and activities SAGE produces throughout the year. Give a little, give a lot... Every dollar you donate is appreciated and will be put to good use.

FOR MORE INFORMATION ON SAGE'S GIVE FROM THE HEART CAMPAIGN PLEASE READ THE ENCLOSED FLYER.

## NOTES FROM THE SAGE CAMERA CLUB

Well...what are you waiting for? An engraved invitation? You have a camera...now learn how use it! The SAGE CAMERA CLUB meets on the FOURTH Saturday of every month at the Pride Center. Our next two meetings will be held on Feb. 22nd and March 22nd, 2014. We are planning to have guest professional photographer speakers, camera tutorials from OUR experts, photo op meet-ups, and more expertise than you can shake a stick at.

Our January Meet-Up was attended by four hardy souls, who met at the Pride Center on Tuesday, Jan. 7th, at 1:00 PM. We braved the wind, rain, and cold to take photos of the Pride Center area.

For our February Meet-Up, we will try once again for the Riverwalk/Broward Center area. We will gather at the Pride Center at 1:00 PM, on TUESDAY, February 11th, and then carpool to the district. All are welcome to attend... Please bring your camera and join us!

--John

*This is a SAGE sponsored activity.*

PAID ADVERTISING - PAID ADVERTISING - PAID ADVERTISING - PAID ADVERTISING - PAID ADVERTISING - PAID ADVERTISING

 **PRIMAVERA Restaurant**  
*Fine Italian Cuisine since 1985*

**AWARD WINNING WINE LIST**  
**PRIVATE BANQUET ROOMS**

*Located in Primavera Plaza  
830 East Oakland Park Blvd.  
Fort Lauderdale, FL 33334*

**(954) 564-6363 • [www.TRUEITALIAN.COM](http://www.TRUEITALIAN.COM)**

**Tropics**  
RESTAURANT  
PIANO BAR

**2000 Wilton Drive • Wilton Manors, FL 33305**  
**954.537.6000 • [www.tropicsftl.com](http://www.tropicsftl.com)**

# SAGE SOCIAL-LITES

Carl Galli

To paraphrase an old O.J. commercial: "A day without SAGE is like a day without Sunshine!" And ladies and gentlemen (and those who are undecided) we have a lot of sunshine to spread this month.

February is, of course, Valentine's month. A romantic time of year set in the most indecisive month (are we 28 days this year; or 29); set somewhere between winter and spring. A time when thoughts turn from ourselves to our spouses, partners, lovers, boyfriends, girlfriends, or even tricks...

So to brighten the days, and give you some direction, we have planned the following:

Sunday, February 9th, at 1PM at the Pride Center, Dr. Deric Bownds will start us off with a piano recital of glorious music by Mozart, Schubert, Brahms, Debussy, Poulenc, and the "flashy" Chopin Scherzo No.2 in B-flat Minor, Op. 31. This continues SAGE's tradition of free concerts for our community. Everyone is invited.

Then, on Sunday, February 16th, SAGE is throwing a lavish luncheon at one of the most romantic restaurants in Broward County. Once again Chef Giacomo, of Primavera, has created a special menu just for SAGE. A high-end luncheon for a moderate price. Starting at 2PM. (Please see the flyer in today's Newsletter for details.)

On Monday, February 17th, the SAGE Movie is one of the most romantic and bittersweet films that we've shown in many years. ***Out in the Dark*** swept international film festival awards last year. We'll screen it at 4:15PM at the Pride Center (Room 204). You can read more about it in this issue.

Come to one, or come to all... and even if you don't have someone "special" in your life, you'll have your SAGE family with you.

*A note to our readers: As you probably know by now, Ron is in Manor Pines Rehab., still recovering from a lingering illness. Several different SAGE writers have been pinch-hitting for him. If you'd like to call him, please do so through the Manor Pines phone number: (954) 566.8353 (Room 423B).*

*This is a SAGE sponsored event.*

## Save the Dates:

Sunday, February 9th, Dr. Deric Bownds, Pride Center  
Sunday, February 16, Valentine's Party, 2PM, Primavera  
Sunday, March 9, 1PM, Broadway Series, Memphis (sold out)  
Thursday, March 13, 6PM -Meet-Up- McGuire's (Andrews Avenue)  
Sunday, March 23, SAGE Annual Mtg. (Venue TBD)

## TIME TO GIVE FROM THE HEART!!!



Over the years our SAGE family has given generously from their hearts to the annual SAGE Give from the Heart campaign.

Once again, we call upon our membership to support the programs and activities SAGE produces throughout the year.

Give a little, give a lot...

Every dollar you donate is appreciated and will be put to good use.

FOR MORE INFORMATION ON SAGE'S GIVE FROM THE HEART CAMPAIGN PLEASE READ THE ENCLOSED FLYER.

PAID ADVERTISING - PAID ADVERTISING - PAID ADVERTISING - PAID ADVERTISING - PAID ADVERTISING - PAID ADVERTISING

Household Pests  
•  
Lawn Spraying  
•  
Rodent Control  
•  
Termites  
•  
Bed Bugs  
•  
RESIDENTIAL  
COMMERCIAL  
•  
Licensed & Insured

(954) 920-BUGS (2847)

"Hello Aloha... Goodbye Bugs"

**The Parish of Sts. Francis and Clare**  
*A Progressive Community in the Catholic Tradition  
Where We Welcome and Appreciate Diversity!*

Mass Times:  
Wednesday 7:00 PM  
Saturday 5:00 PM • Sunday 10:30 AM  
101 N.E. 3rd St.  
Ft. Lauderdale, FL 33301  
**954.731.8173**  
[www.stsfrancisandclare.org](http://www.stsfrancisandclare.org)

# NEW YEAR NEW YOU

## CO<sub>2</sub>RE

Fractional CO<sub>2</sub> Skin Resurfacing

Experience Dramatic Improvement With:

- > Skin Tone & Texture
- > Sun Damaged Skin
- > Fine Lines & Wrinkles
- > Post Traumatic & Acne Scars
- > Age Spots

**SPECIAL OFFER!**  
**15% OFF**

Any cosmetic procedure!  
Mention SAGE.

Certain restrictions apply.  
Expires 5/31/2014

### What is CO<sub>2</sub>RE?

CO<sub>2</sub>RE is a fractional therapy CO<sub>2</sub> laser for skin resurfacing. Your skin is treated with a matrix of laser light points that vary in intensity, depending on your skin type and desired treatment results. The result is a treatment that is fast, more comfortable and requires less downtime than traditional resurfacing - enabling you to get back to your daily routine much quicker.

**Schedule a consultation today!**

**954.537.4106 | [www.NaturaDermatology.com](http://www.NaturaDermatology.com)**

**NATURA**  
DERMATOLOGY & COSMETICS

Download our app today:  
 

Financing with:  
 Making care possible...today

Get social with us:  
 

**Will Richardson, MD FAAD | Adrian Dobrescu, MD FAAD**  
**Conveniently located near the Galleria Mall on Bayview Drive.**

CoolSculpting Fat Reduction | Ultherapy Skinlift | CO<sub>2</sub>RE Laser Skin Resurfacing | Blepharoplasty Eye Lid Rejuvenation | VelaShape Cellulite Reduction | ArteFill Long Term Filler | Botox Cosmetic/Dysport

Juvederm Ultra & Voluma | Restylane/Perlane | Sculptra Aesthetic | Medical Dermatology

© 2014 Natura Dermatology & Cosmetics



# SAGE Spotlight: Holiday Party





# "What Cruise?"



A few of our intrepid SAGE sailors relax after a long day spent relaxing at sea.

Photo: Sharron Demarest

*Dear Readers,*

*Fitting all the pictures of our many events into the newsletter is just not possible. We know each and everyone of you would like to see more pictures of SAGE activities so we have decided to start a photo gallery to showcase our events. The galleries will be posted on the SAGE website @ [www.sagewebsite.org](http://www.sagewebsite.org) and will begin with this issue of the SAGE featuring the meet-up at Lester's Diner and the SAGE Anniversary Dinner. We hope you will visit the SAGE website and enjoy the photographs. Again, our website address is [www.sagewebsite.com](http://www.sagewebsite.com).*

*Editor*



## DOCUBANK

### Peace of Mind in Case of Medical Emergencies

DocuBank is the nation's largest and oldest electronic storage and access service for a person's health care directives. When people store health care documents with DocuBank, they receive a customized DocuBank Emergency Card that makes all of their critical health care documents available by phone call or Internet access. The DocuBank card lists important medical conditions and allergy information, making it immediately available at a hospital. The name and contact information of one emergency contact also appears on the face of the card. A cover page that accompanies the directives any time they are requested lists two additional contacts and the name and number of a primary care physician. The system is password protected. Other documents stored in DocuBank include living wills, health care powers of attorneys, domestic partnership agreements, civil unions and marriage licenses.

DocuBank is extremely important for any couples not legally married including same-sex couples. The reason is that the law looks at the other person as a legal stranger, and it's important to not only prepare documents giving the other person the appropriate rights — durable power of attorney, advanced health-care directive, etc. — but to make sure that they are readily available in an emergency.

The hospitals have so many legal concerns, particularly with privacy laws, that many times they will err on the side of 'legal safety,' particularly if one partner is unconscious or incapacitated and unable to give any authorization.

The safe and secure system provides peace of mind to those enrolled in it. For more information on DocuBank, visit [www.docubank.com](http://www.docubank.com) or call: 305.751.8855. Treece Financial Group, Inc., 9999 NE 2<sup>nd</sup> Avenue, Ste. 203, Miami Shores, FL 33138

*As a Fiduciary, I have a duty of utmost care and loyalty to my clients and part of my financial planning practice is to look at everyone's overall needs and not just financial needs, and when I come across something useful, I like to pass it on.*

*For further information please email: [david@davidtreece.com](mailto:david@davidtreece.com) or visit: [www.treecefinancialgroup.com](http://www.treecefinancialgroup.com)*

*Securities and Advisory Services offered through Cetera Advisors LLC, member FINRA/SIPC. Cetera is under separate ownership from any other entity.*

PAID ADVERTISING - PAID ADVERTISING - PAID ADVERTISING - PAID ADVERTISING - PAID ADVERTISING

Compassionate In-Home Care,  
Delivered From The *Heart*

At Comfort Keepers® we provide an approach to care that focuses on the "whole person," by promoting  
**Mind • Body • Nutrition • Safety**  
through social engagement, mental stimulation and physical exercise.

Owned by Ft. Lauderdale natives,  
David and Cindy Mahoney.

CALL US TODAY!  
**954-825-0155**

 **Comfort Keepers**



**COMFORTKEEPERS.COM**

**SERVICES**

- Companionship
- Cooking, Light Housekeeping
- Personal Care
- Errands, Shopping
- Incidental Transportation
- Laundry
- Grooming, Dressing Guidance
- Medication Reminders
- Alzheimer's, Dementia Care

License #299993921

***What sounds would you miss if you couldn't hear them anymore?***

Come see us at ***A.Bel Audiology Associates*** for ***better hearing solutions.***



***Paula Liebeskind, Au.D***  
***Phone: 954-435-9779***  
***1861 N.W. 123rd Ave.***  
***(in Pillbox Plaza)***  
***Pembroke Pines, FL 33026***



## SEE YOU AT THE MOVIES



John Gearity and Carl M. Galli



For Valentine's month, our movie is one of last year's most honored independent films. *Out in the Dark* is a romantic drama centered in the love affair between two men on opposite sides of the Mid-East conflict: Roy, (played by **Michael Aloni**) a well-connected, young Israeli lawyer; and Nimr, (**Nicholas Jacob**, in his film debut) a Palestinian on a student visa.

Directed by **Michael Mayer** (in his feature debut), and co-written by Yael Shafrir, it is a bittersweet love story, as well as a concise comment on the politics, sexual mores, and social-economic differences that exist in the region.

Without laying blame, it does not shy away from showing (according to IMDb.com) "both Palestinian fanaticism and the heavy-handed apparatus of the Israeli security services... In a way the (characters) become symbols of these two solitudes, each wanting peace and security, but both slow to



recognize that their futures are inseparably bound together."

Compared favorably to *Brokeback Mountain*, this film has gone on to win 11 International Film Festival Awards (including Haifa, Miami, Philadelphia, San Francisco, Tampa, and Torino).

While there has been some controversy concerning the ending, most critics agree it captures the "uncertainty and ambiguity" of life realistically. It does not pander to its audience (by giving us a patently happy ending). Nor does it lay on the melodrama. But this is something we can discuss at dinner afterward.

*Out in the Dark* runs just 96 minutes, and is subtitled in English (from its original Hebrew and Arabic).

We will screen it at 4:15PM, on Monday, February 17th in Room 204 of the Pride Center.

*This is a SAGE sponsored activity.*

PAID ADVERTISING - PAID ADVERTISING - PAID ADVERTISING - PAID ADVERTISING - PAID ADVERTISING

### Will You Outlive Your Money?

#### Treece Financial Group, Inc.

Investment Advisor Representative  
with a fiduciary duty to his clients



- **Asset Allocation**
- **Estate and Financial Planning**
- **Social Security Planning**
- **Portfolio Review and Performance Evaluation**
- **Personal Assistance & Exceptional Service**



Visit: [www.treecefinancialgroup.com](http://www.treecefinancialgroup.com)  
to download our **FREE** Survivor's Guide

**Headquarters**  
9999 NE 2nd Avenue, Ste. 203  
Miami Shores, FL 33138  
Phone: 305-751-8855

**Broward Office**  
Wilton Executive Suites  
2312 Wilton Drive  
Wilton Manors, FL 33305  
Phone: 305-751-8855

Securities and Advisory Services offered through Cetera Advisors LLC,  
member FINRA/SIPC. Cetera is under separate ownership from any other entity.



We support vulnerable individuals who  
need help with life management due to  
age, disability or family circumstance.

Filling the gaps in social services throughout South Florida, we  
work to transform lives. Our services give peace of mind to you  
and your family. We accomplish this through:

- ♦ Home Visits by Social Workers, Nurses and Friendly Visitors
- ♦ Healthcare Coordination and Advocacy for Quality Care & Services
- ♦ Crisis Intervention, Counseling and Placement Services

Our Vision is to be the premier provider of comprehensive and personalized  
life management services for those in need at any stage of life.

Call us today to learn more about how we Help.  
Broward 954-720-2485 [www.MonarchCare.org](http://www.MonarchCare.org) Palm Beach 561-279-4170

MonarchCare is a not-for-profit social service agency registered with the State of Florida,  
#CH16999 and designated by the IRS as a 501(c)3 charitable organization.





## OCCASIONAL THOUGHTS

Carol Youngblood

### SOME SENIOR MOMENTS

The other night I spent a wonderful evening with nostalgia. When I came home from dinner, I watched my usual “Big Bang Theory” at 7 and “Jeopardy” at 7:30. But then I departed from routine. Instead of “Monk” or some other such show, I watched movies.

I started with “Le Cage aux Folles,” the original French version. Luckily for me, it had been dubbed in English. I had never seen this version, and it was very funny. I think Nathan Lane was perhaps a bit better as “Mother,” but the French actor was also very good. And the young French man and woman were prettier than ours. It was a thoroughly enjoyable movie.

Then I moved on to some channel switching. On one channel I watched “White Christmas,” a corny story with a great song. The male stars are Bing Crosby and Danny Kaye. I loved Bing Crosby, and he was certainly the better singer. But for dancing and pure camp, Danny Kaye is hard to beat.

Because the movie is slow, I flipped channels and discovered a PBS station with anti-war folk songs of the 60’s and 70’s. I heard Harry Belafonte and the Kingston Trio and other groups of the time. There was even a group called the Youngbloods, whom I didn’t remember. They sang “Where Did All the Flowers Go?” and “Michael, Row That Boat,” and a bunch of other songs. An interesting slant on this for me is that I have become pretty much a pacifist in the last couple of years, so the songs were probably more meaningful for me now than they were then.

Anyway, it was a lot of fun. Try breaking your television routine. If your routine is movies, watch “Monk.” You’ll like it.

***Coming Soon!***

**SAGE Classifieds**

**A new service for SAGE members only.**

***Buy/Sell Exchange***

***Help Wanted***

***Employment Wanted***

***Apt. for Rent?***

***House/Rent or Buy/Roommate***

## GEORGE GEORGAKAKIS, M.D.

DIPLOMATE AMERICAN BOARD OF OTOLARYNGOLOGY  
PEDIATRIC AND ADULT OTOLARYNGOLOGY  
HEAD AND NECK SURGERY

4801 North Federal Hwy., Suite 302  
Fort Lauderdale, FL 33308  
[www.drgeorgeent.com](http://www.drgeorgeent.com)

Phone: (954) 493-8773

Fax: (954) 493-8807

## Robin L. Bodiford

ATTORNEY AT LAW  
WILLS • TRUSTS • BANKRUPTCY



LAW OFFICES OF ROBIN L. BODIFORD, P.A.

2550 N. FEDERAL HWY. • SUITE 20  
FORT LAUDERDALE, FL 33305

PH 954-630-2707 • CELL 954-802-1441

email: [rbodiford@aol.com](mailto:rbodiford@aol.com) • [www.RobinBodifordLaw.com](http://www.RobinBodifordLaw.com)

AUTHOR, "Fresh Start Bankruptcy" &  
"A Simplified Guide to Creating a Personal Will" (John Wiley & Sons, 2003)

## Helping Retirees, Seniors and their Families Change or Adapt their Living Environments to be Safe, Barrier Free, and Convenient

- ◆ Aging In Place Services
- ◆ Senior Move Management Services
- ◆ Personal Information Services
- ◆ Organization Services
- ◆ Digitization Services

Ask about renowned author, Wanda Goydz book,  
*Sensible Smart Tips for Living in Your ForeverHome™*

Licensed ~ Insured



GOLDEN AGE LIVING  
*Organizing Lives One Person at a Time*

[wegcaps@att.net](mailto:wegcaps@att.net)

888-607-4650 ◆ [www.goldenageliving.com](http://www.goldenageliving.com)



## AMERICAN TAX & INSURANCE SERVICES

*"The safe return of your money is our top priority"*

# GUARANTEED RETURN FIXED ANNUITY 1ST YEAR BONUS INTEREST RATE



# 10.00%

PLUS A LIFETIME INCOME RIDER GUARANTEED TO  
GROW AT 6.5% WITH INCOME FOR LIFE

- 10% Interest bonus credited on Day 1 on total deposit
- Principal & interest guaranteed • No up-front fees or charges
- Interest grows tax deferred • Interest available monthly
- Representing 60 top rated companies

Rates effective 01/03/13 subject to change. Company rated A+ Superior by A.M. Best.

Al Cicotte & Kevin Palombo  
AMERICAN TAX & INSURANCE SERVICES  
2929 E Commercial Blvd, 8th Floor, Penthouse D  
Fort Lauderdale, FL 33308

# 954.302.3228

[www.americantaxandinsurance.com](http://www.americantaxandinsurance.com)

## SAGE BIRTHDAYS FOR THIS MONTH

The SAGE Board would like to acknowledge the following members whose birthdays are this month as well as any other member whose birthday that we don't have.

If, when you renewed your membership or became a new member you did not give us your birthday, you may call the office and leave the information at 954.634.7219 or e-mail us @ sagesofl@gmail.com.

First Name	Last Name	Birthday	First Name	Last Name	Birthday
Michael H.	Devlin	02/03	Jack	Carrel	02/13
George H.	Hibberd	02/06	Joel	Tendler	02/15
Ron	Klenk	02/06	Gary	Kempler	02/18
Carmen R.	Critchlow	02/09	Christopher	MacIellan	02/18
Godfrey	Isaacs	02/09	Mark	Barron	02/20
Richard	Rogers	02/09	Betty M.	Torrance	02/22
Lee	Lawson	02/10			
Jack	Myers	02/11			
Ed	Slough	02/11			
Valerie	Eisen	02/12			

### New Members

First Name	Last Name	Date Joined
Lewis	Levinson	12/13
Diana E.	Llopis	12/13
Kathy	Maccttio	12/13
Michael G.	Sposato	12/13

### 5 Year Anniversaries

First Name	Last Name	Date Joined
Carol	Youngblood	12/08

### 10 Year Anniversaries

First Name	Last Name	Date Joined
Edward	Brown	12/03

## SAGE NEEDS YOU!

Please Join or Renew Today.

**NAME:** \_\_\_\_\_ **Birthday: Month** \_\_\_\_\_ **/Day** \_\_\_\_\_

**ADDRESS:** \_\_\_\_\_

**CITY:** \_\_\_\_\_ **STATE:** \_\_\_\_\_ **ZIP:** \_\_\_\_\_

**TELEPHONE:** \_\_\_\_\_ **CELL:** \_\_\_\_\_



MEMBERSHIP APPLICATION

**COMMITTEE INTEREST:** \_\_\_\_\_

**E-MAIL:**

Would you like to receive the

Would you care to make a tax-deductible contribution to SAGE included with your dues? Yes No

**CIRCLE ONE: RENEWAL NEW MEMBER**

Please enclose a check in the amount of \$35.00 made payable to SAGE OF SOUTH FLORIDA

**Mail To:** SAGE of South Florida, PO Box 70516, Oakland Park, FL 33307

**SENIOR ACTION IN A GAY ENVIRONMENT**





**ANDREWS DINER**  
*"A Family Restaurant"*  
 Hosts: Angelo, Gerri & Marla  
 2980 N. Andrews Avenue  
 Fort Lauderdale, FL 33311  
 954.563.3555

**Hours**  
 Monday, Tuesday & Wednesday 7 AM - 3 PM  
 Thursday & Friday 7 AM - 8 PM  
 Saturday 7 AM - 3 PM  
 Sunday 7 AM - 1:30 PM



**KAREN CARROLL  
 JULIE SLATER  
 ED FIORENZA  
 MARCUS ROWE**

EYE EXAMS  
 & CONTACT LENS FITTINGS  
 BY INDEPENDENT DOCTOR  
 OF OPTOMETRY

2228 WILTON DRIVE  
 WILTON MANORS, FL 33305

954.567.3937  
 CHICOPTIQUE@AOL.COM

**Show Us Your SAGE card and get a 20% discount!**

**ZUCKERELLO'S**  
 3017 East Commercial Blvd.  
 Fort Lauderdale

**50% OFF  
 ENTREE**

With purchase of another of equal or greater value  
 Valid 7 days - after 6pm  
 Must present this coupon. Discount taken from lower priced entrée.  
 Not valid with Early Bird Specials or with any other offer.  
 1 coupon per table. Expires 02.28.14

**EARLY BIRD MENU**  
 7 Days a Week 4pm-6pm  
 Complete Dinners starting at **\$12**

**HAPPY HOUR**  
 7 Days a Week 4pm-6pm  
 AT THE BAR ONLY

ZAGAT RATED 2011 VERY GOOD TO EXCELLENT


like us on  **954-776-4282**  
 Zuckerellos.com

**CALL FOR A  
 FREE  
 CONSULTATION**


**CONFUSED  
 ABOUT THE  
 CHANGES  
 IN MEDICARE?**

**Medicare Specialist offering:**  
 Low Cost Medicare Supplements  
 Part D Prescription Drug Plans  
 No Cost Medicare Advantage Plans

**Very Affordable Rates On:**  
 Long Term and Home Care Coverage  
 Life and Disability Insurance  
 Guaranteed Income for Life



Call Gary Kempler at  
 954-328-5418  
 or send an email to  
 garykempler@ffig.com



**FUTURITY FIRST**  
 INSURANCE GROUP





## 30 Minute Men's Health Screening

**Good for the body. Good for the mind.**

Screening includes:

- Blood pressure and pulse oximetry
- Complete blood count
- Complete metabolic profile
- Lipid profile
- Prostate-specific antigen (PSA)
- Testosterone
- Body Mass Index (BMI)
- Vitamin D
- Thyroid (TT3, T4 and TSH)
- Diabetes (A1c)

**Monday to Friday, 7am - 5:30pm**  
**Saturday, 8am – 11am. Walk-ins welcome.**

\$75 flat fee. Screening may be covered by insurance.

**Call 954.279.7946** to speak to the Men's Health Navigator.

Or email **MensHealth@BrowardHealth.org**.

He will assist you with alternative times, insurance verification and any other questions you may have about the screening.

**Fast, convenient, mobile health  
screenings on the new Man Van.**



**BROWARD HEALTH**  
**IMPERIAL POINT**

6401 N Federal Highway,  
Fort Lauderdale, FL 33308

**Visit [BrowardHealth.org/BHIPmen](http://BrowardHealth.org/BHIPmen)** to see a  
list of upcoming events and catch the  
Man Van out in the community.

**SAGE VALENTINES DINNER at PRIMAVERA**  
830 East Oakland Park Blvd., Ft. Lauderdale, FL. 33334  
(954) 564-6363

**SUNDAY, February 16, 2014    2PM - 5PM**



**2PM - 3PM: Seating and Mixer**

**3PM - 4:30PM: MAIN MENU**

**SALAD Choice of one from:**

**Special House Salad** (Romaine Hearts & more with lemon vinaigrette)

**or Tomato & Fresh Mozzarella Salad** (*Sliced fresh Mozzarella & tomatoes, balsamic vinaigrette*)

**ENTREE½ Choice of one from:**

**Pan Seared Tilapia Fillet "Asparagus"** - Topped with a tasty Asparagus crust,  
Chardonnay & lemon sauce with asparagus

**Chicken Breast "Marsala"** - sautéed with assorted mushrooms & in a Marsala wine sauce

**Fettuccini Alfredo w/Shrimps-** Delicate noodles with a cream and parmesan sauce

**Chicken Parmigiana** - Traditional

**Grilled Beef Tenderloin "Pancetta"** - Served over a grilled portabella mushrooms  
Rosemary, Cabernet & tomato sauce

**Entrees with Fresh Rolls, Vegetables of the Day & Penne Marinara Side**

**4:30 PM: DESSERT COURSE:**

**Saint Honore½ Cake** (Sugar-Free Dessert Available Upon Request)

**Beverages: Coffee/ Tea/ Iced Tea/Soda**

**Pricing: \$25.00 @ for MEMBERS or \$30.00 @ for NON-MEMBERS    NO REFUNDS!**

**IF YOU CANNOT MAKE IT, PLEASE CALL THE OFFICE & SEND SOMEONE IN YOUR PLACE**

**Reservations Close: NO LATER THAN 1PM Wednesday, February 12, 2014**

**SAGE VALENTINES DINNER at PRIMAVERA RESTAURANT**

\_\_\_\_\_ MEMBERS @ \$25.00 & \_\_\_\_\_ NON-MEMBERS @ \$30.00 My Phone # \_\_\_\_\_

Name: \_\_\_\_\_ Write-in Your Entrée: \_\_\_\_\_

Name: \_\_\_\_\_ Write-in Your Entrée: \_\_\_\_\_

Name: \_\_\_\_\_ Write-in Your Entrée: \_\_\_\_\_

Name: \_\_\_\_\_ Write-in Your Entrée: \_\_\_\_\_

Mail with Payment to SAGE at: P.O. BOX 70516, Oakland Park, FL 33307

Questions? Call the SAGE Hot Line at: (954) 634-7219

A SAGE-Sponsored Activity





***On SAGE's 20<sup>th</sup> Anniversary Year***  
***Please GIVE FROM YOUR HEART***

**On this upcoming February won't you give  
from your heart?**

**You all belong to SAGE, the premier, most  
prestigious, senior non-profit LGBT  
organization in South Florida. All our  
activities are designed to break even at best,  
and SEVERAL have to be subsidized by our  
Organization.**

**Please help us to continue in our 20<sup>th</sup> year and  
beyond serving you and your needs, as well  
as continuing our community outreach efforts  
within both the LGBT and the mainstream  
communities.**

**On this St. Valentine's Day won't you please  
give from your heart?**

**YOUR TAX DEDUCTIBLE contribution\*, small  
or large, will help assure the financial health  
and continuing success of SAGE of South  
Florida.**

**Thank you all for your generous hearts!!!!**



---

**SAGE'S 2014 GIVE FROM THE HEART CAMPAIGN**

**Name: \_\_\_\_\_ enclosed is a check for \$\_\_\_\_\_ as my  
donation to SAGE's 2014 Give From the Heart Valentine's Campaign.**

**\*As a 501©3 Nonprofit, any donations SAGE receives are tax deductible as  
allowed by IRS laws and regulations.**

**Mail your donation to: SAGE at: P.O. BOX 70516, Oakland Park, FL 33307**  
**Questions? Call the SAGE Office at: (954) 634-7219      A SAGE-Sponsored Activity**  
***Donors of \$500 or more will be listed as Archangels. All others will be listed as  
Angels in future issues of the Newsletter.***

**All are SINCERELY and GRATEFULLY APPRECIATED!**

# ***New SAGE Co-Ed Discussion Group***

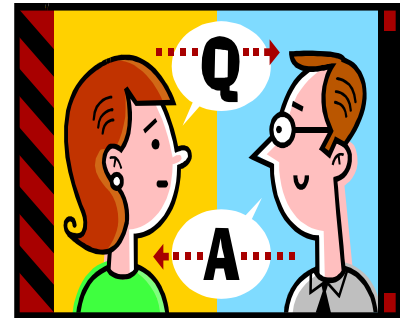
In Conjunction with the Pride Center

## ***Meets on Feb. 6 and Feb. 20 at 1 pm***

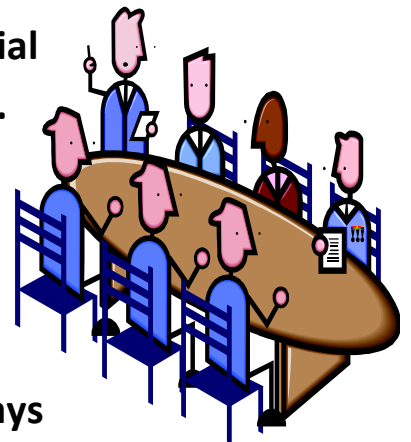
Social conversation group is to include men and women talking together.

Meeting format consists of facilitator asking general questions to the group.

Participants will be asked to orally respond (one at a time) with their opinions, thoughts, and experiences.



- Questions will pertain to a variety of topics such as current events, personal and work experiences, social issues, news worthy stories, travel, and much more.
- *This group could be ideal for you if you find people fascinating and would enjoy hearing what your peers think and feel and are also willing to express your own thoughts and ideas.*
- We will meet each month on the 1<sup>st</sup> and 3<sup>rd</sup> Thursdays from 1—3PM at the Pride Center.



## **Everybody is welcomed. Come join us!**



# SAGE Activities Calendar

## FEBRUARY 2014

SUNDAY	MONDAY	TUESDAY	WEDNESDAY	THURSDAY	FRIDAY	SATURDAY
						<b>1</b> 9:30AM Board Meeting SKOLNICK Ctr. LUNCH & LEARN 12:30 PM Call Office @ (954) 634-7219 for reservation
<b>2</b>	<b>3</b> 11AM - 1PM SAGE On the Border Co-Ed / Alternatives @ Volen Center in Boca	<b>4</b>	<b>5</b> 1 PM Men's Drop In @ Pride Center 4 PM COMPUTER CLUB @ Pride Center	<b>6</b> 1-3PM SAGE Co-Ed Discussion Group @ Pride Center Rm 207	<b>7</b>	<b>8</b> 11AM SAGE at Stonewall – Book Club @ Stonewall Library Call Richard Hess 954-568- 1592 or Philip Collier 443-614-7135
<b>9</b> 2PM Free Piano Concert by Dr. Deric Bownds @ Pride Center – Main Hall	<b>10</b> 11AM - 1PM SAGE On the Border Co-Ed / Alternatives @ Volen Center in Boca	<b>11</b> 1PM Camera Club Photo Op - Meet at Pride Center no later than 1PM	<b>12</b> 1 PM Men's Drop In @ Pride Center 4 PM COMPUTER CLUB @ Pride Center	<b>13</b> 12PM SAGE Women's Lunch @ Golden Corral – Tamarac - call Nancy for info (954) 741-1540	<b>14</b> Valentine's Day	<b>15</b>
<b>16</b> 2PM SAGE Valentines Party @ Primavera	<b>17</b> President's Day 1AM - 1PM SAGE On the Border Co-Ed / Alternatives @ Volen Center in Boca 4:15 PM SAGE Movie "Lifeboat" @ Pride Center - dinner TBD	<b>18</b>	<b>19</b> 1 PM Men's Drop In @ Pride Center 4 PM COMPUTER CLUB @ Pride Center	<b>20</b> 1-3PM SAGE Co-Ed Discussion Group @ Pride Center Rm 207	<b>21</b>	<b>22</b> 1PM SAGE Camera Club @ Pride Center – Rm 207
<b>23</b>	<b>24</b> 11AM - 1PM SAGE On the Border Co-Ed / Alternatives @ Volen Center in Boca Men's Singles DINNER @ TROPICS - call John C (954) 933-2963	<b>25</b>	<b>26</b> 1 PM Men's Drop In @ Pride Center 4 PM COMPUTER CLUB @ Pride Center	<b>27</b>	<b>28</b>	



# **SAVE the DATES:**

<b>March 9, 2014, Sunday</b>	<b>Broadway Series: Memphis at Broward Center, SOLD OUT</b>
<b>March 13, 2014, Thursday</b>	<b>Meet-Up: Maguires Hill 16 Irish Pub &amp; Eatery</b>
<b>March 23, 2014, Sunday</b>	<b>Annual Mtg., Gullupi's Restaurant</b>
<b>May 11, 2014, Sunday</b>	<b>Broadway Series: Ghost at Broward Center, SOLD OUT</b>