

THE SAGE

The Newsletter of SAGE of South Florida

MARCH 2013

WE
WANT
YOU...



To
Speak
Out!

Your SAGE Board wants and needs your input and recommendations to continue to serve and support you. We have created a simple two-page survey with which we expect to get ideas and suggestions to continue our mission. The survey will be mailed to you in late February or early March. We want to provide the services you require and build on them with some new ones. Please take the time and fill it out and return it to us. We are providing a return addressed envelope with the word "Survey" on it. This will help us to put them aside and let the Survey Committee tally them and present your input to the SAGE Board.

For those of you who have asked about starting new programs, asked us to enhance others, or dislike something we are currently doing, this is YOUR chance to be heard. We have made the survey anonymous so that you can give us your input without being identified.

When the Surveys are all received, your SAGE Board will get a summary of your responses. We will take the summary and your comments and use it to do some long term and short term planning. Some of your suggestions can be implemented quickly while others may need to be addressed by change and reorganization. This is how SAGE will continue to grow and serve you, our members.

Also, I would like to encourage you again, if you haven't responded to our **GIVE FROM THE HEART** campaign, to please do so. We have heard from some people wondering where their \$35.00 membership dues go. I can tell you that the publication of our **THE SAGE** newsletter is not even fully covered by your dues. We are blessed with volunteers who design, layout, take pictures and prepare the Newsletter for mailing. Also such events as the Annual Picnic, the Survey, our free concerts, participation in community events (i.e. PrideFest, Health Fairs, etc.) are dependent on your generosity. Thanks to all who have already contributed. I will keep you informed on how the campaign is going.

--Ken Goodman
President

SAGE of South Florida, Inc.

Senior Action in a Gay Environment

SAGE Message Line - 954.634.7219 - www.sagewebsite.org

SAGE OF SOUTH FLORIDA, INC.

2040 N. Dixie Highway
Wilton Manors, FL 33305

Mailing Address:

SAGE of South Florida
PO Box 70516
Oakland Park, FL 33307

Message Line: 954.634.7219

All Copy Deadline: 8th of the Month

Advertising Deadline: 1st of the Month

Email to Editor: sagesofl@gmail.com attn: Editor

Website: www.sagewebsite.org

OFFICERS**President**

Kenneth Goodman

Vice President

Ron Catena

Secretary

Ann C. Smith

Assistant Secretary

John G. Harris

Treasurer

Inez Pasher

BOARD MEMBERS AT LARGE

John Chandler, Nancy Drennen, Marc Flanagan, John Harris, Gary "Lee" Lawson
Bruce Williams

COMMITTEE ASSIGNMENTS

Advertising

John G. Harris

Archivist

Hank Brooks

Book Club

Bill Greeves (F)

Computer Club

Ken Goodman (F)

Education

Bruce Williams

Funding

Nancy Drennen (C)

John G. Harris (Advisory)

Ann C. Smith

Ron Catena (Advisory)

Inez Pasher (Advisory)

Lunch and Learn

John Chandler w/ Leo Glickstein

Membership

Ann Smith

Nancy Drennen

Men's Drop-In

Ron Catena (C)

Bill Woodward (F)

Norm Peters (F)

Men's Singles

John Chandler

Movie Club

John Gearrity (F)

Carl M. Galli (F)

Newsletter Editor

Sharron Demarest

Associate Editor

Inez Pasher

Contributing Columnists

Carol Youngblood

Bruce Williams

Office Manager

Ken Goodman

Pride Center (SAC) Liaisons

Nancy Drennen

Gary "Lee" Lawson

Bruce Williams

Public Affairs

Ron Catena

SAGE on the Border/Alternatives

Ann Smith (C)

Caroline Leto (F)

Larry McNear (F)

Bruce Todres (F)

SAGE Women

Nancy Drennen

Social Activities

Jean Johnson (Advisory)

Marc Flanagan (C)

Nancy Drennen

Carl M. Galli (Advisory)

John Gearrity (Advisory)

Lorraine "Pinky" Luddy (Advisory)

Support

Leo Glickstein

Godfrey Isaacs

Inez Pasher

Volunteer Coordinators

Frank Cavanaugh

Ken Moore

Les Oldenbusch

Webmaster

Richard Bunyan

Appearance of an advertisement in this newsletter does not constitute endorsement by SAGE of South Florida, Inc. of the service being offered. We thank our advertisers for helping us to pay for printing this newsletter.

SAGE Editorial Policy

SAGE welcomes contributors to this newsletter. An author may request their entry to be "anonymous." However, the submission as received by SAGE must be accompanied by the full name and address of the author. Items will be published at our discretion. If we feel that we cannot publish a submission anonymously, we will contact the author. We reserve the right to edit items for size considerations, clarity or standards of decency.

Highlights

SAGE Cover***We Want You...To Speak Out!***

Masthead	1
SAGE Mission Statement	1
SAGE Advertising Policy	1
SAGE Friendly Support	1
Reminder from the Board	2
SAGE Lunch & Learn	2
SAGE Members in Need	2
Sharing SAGE with Others	2
SAGE Meetings	3
SAGE Men's Drop-In	3
See You at the Movies	4
SAGEComputer Club	5
Give From Your Heart Campaign	6
SAGE Spotlight	7,8
Social-Lites	9
SAGE on the Border/Alternatives	11
Occasional Thoughts	11
Milestones	13
SAGE 2012 Financials	14

SAGE FRIENDLY SUPPORT PROGRAM

We'd like to think we are not merely fair weather friends, but people who really care about our SAGE family. If you know of any SAGE member who would appreciate a friendly call, is sick, in the hospital, recently lost a loved one, or just needs a note of cheer, please contact:

For women — Inez Pasher @ 954.563.2814.

For men — Leo Glickstein @ 954.935.5799.

This is a SAGE sponsored activity.

SAGE MISSION STATEMENT

SAGE of South Florida is a non-profit organization for Senior action in a Gay Environment to enrich the lives of the GLBT senior community through membership inclusive of age, gender, race, nationality and religion. We believe this can be accomplished by sponsoring social alternatives To provide personal interaction, offering educational opportunities to deal with the special needs of aging, and promoting contact with the isolated and homebound persons of our community. SAGE is also an advocate for the concerns and needs of the senior community at large, providing referral information on community resources and promoting inter-generational communication in the GLBT community. SAGE was founded in 1994 as a Florida "not for profit."

Our monthly newsletter is partially underwritten by advertising revenue. We have a written fee schedule for various sizes and number of months. An insert, instead of display advertising, is also available for business and organizations at a very reasonable rate. Contact the SAGE office at 954.634.7219 or email at sagesofl@gmail.com for more information. Appearance of an advertisement in this newsletter does not constitute endorsement by SAGE of South Florida, Inc. of the service being offered. We thank our advertisers for helping us pay for printing this newsletter. Do you have friends or family who own a business? Ask them to place an ad in THE SAGE. We appreciate our business supporters. As members, let's support them in return.

SHARING SAGE WITH OTHERS

Reconnecting with old friends and meeting new acquaintances is a great part of the SAGE tradition. We invite you to share this tradition by inviting someone new to SAGE to one of our many SAGE-sponsored events. Share the camaraderie and support found among SAGE members with others.

When you invite someone new to any SAGE-sponsored events and that friend joins SAGE, he or she will become a SAGE of South Florida member for the reduced fee of \$25 for their first year of membership.

SAGE MEMBERS IN NEED

Please contact the **AADRC (Aging and Disability Resource Center)** @ **954.745.9779**. It is a one-stop center for information and referral services available to seniors and their care-givers in our community.

REMINDER FROM THE BOARD

IF YOU RESERVE A PLACE AT THE 'LUNCH & LEARN' AND YOU DO NOT ATTEND, YOU ARE STILL RESPONSIBLE TO SAGE FOR PAYMENT. WE MUST GIVE THE CATERER AS EXACT A COUNT AS POSSIBLE BASED ON YOUR RESERVATION. THE CATERER MUST BE PAID WHETHER OR NOT YOU SHOW UP.

MONTHLY "LUNCH & LEARN"

12:30 PM, March 2, 2013

HERB SKOLNICK

COMMUNITY CENTER

800 S.W. 36th Avenue, Pompano Beach, FL

RESERVATIONS REQUIRED!!!!!!!!!!

Members with reservations: \$12.00

All others: \$17.00

Everyone Pays at the Door.

Doors Open at 12:00PM

If you arrive early, please make yourself comfortable in the lobby and meet and mingle with other SAGE members and their guests.

Reservations must be made by 12:30PM on the Thursday preceding the Luncheon, as the caterer must have the final count. Please make reservations for the March "Lunch & Learn" with the SAGE office @ 954.634.7219.

MENU

Romaine Salad
Rigatoni Marinara
100% Beef Meatballs
Grilled Chicken
Green Peas
Apple Strudel with Vanilla Sauce

**Our March Speaker will be:
Meet the New Sheriff in Town
Steve Isreal**

PAID ADVERTISING - PAID ADVERTISING - PAID ADVERTIS-

Ft. Lauderdale PIZZA & PASTA

Serving Lunch & Dinner • Delivery after 4 pm



2100 East Oakland Park Blvd.
Ft. Lauderdale, FL 33306
One Block West of US 1

954-566-5226

www.fortlauderdalepizza.com



PRIMAVERA Restaurant

Fine Italian Cuisine since 1985

**AWARD WINNING WINE LIST
PRIVATE BANQUET ROOMS**

*Located in Primavera Plaza
830 East Oakland Park Blvd.
Fort Lauderdale, FL 33334*

(954) 564-6363 • www.TRUEITALIAN.COM



Peter Pan Diner
Open 24/7
RESTAURANT • BAKERY • LOUNGE

- COCKTAILS • CATERING •
- BANQUET FACILITIES •
- BAKERY ON PREMISES •

1216 E. OAKLAND PARK BLVD., FORT LAUDERDALE, FL 33334

954.565.7177

WWW.PETERPANDINER.COM

Tropics
RESTAURANT
PIANO BAR

2000 Wilton Drive • Wilton Manors, FL 33305
954.537.6000 • www.tropicsftl.com

SAGE COMPUTER CLUB

Ken Goodman



We are in season and many of our friends from up north are here. Some of the "snow birds" have joined us at the Computer Club and all are bringing their questions and problems. Come to the Computer Club and have your questions answered. We are ready for the new wave of technology and will give you advice if you seek it.

The Computer Club meets every Wednesday at 4PM for at least an hour. We discuss the issues you wish to bring or a current topic of interest. We have looked at Windows 8, Office 360, discussed Apple's Mountain Lion, recently talked tablets and how to diagnose and resolve problems. We will discuss social media (FaceBook) and other topics of interest to the group later this year. Bring your questions and problems and we will try to help.

The March meetings will be held at the **Pride Center on Dixie Highway** Building A in the AV Room 206 on **Wednesdays** at 4PM. Call for directions if you need them at 954-634-7219 or the Pride Center's switchboard at 954.463.9005.

Would you like to feel more confident when using your computer, smart phone, tablet, or laptop? Come to the SAGE Computer Club. We discuss how to use your computer more efficiently and answer any questions about any issues you may be having with your electronic goodies. We discuss Cloud Computing, the Web, E-Mail, setting up your computer, personalizing the computer, Office software, multimedia software, use of Smart Phones, operating system utilities and maintenance software, security, etc.. We discuss the windows operating systems (XP, Vista and Windows 7) and the Apple OS/X operating systems. For the Smart Phone, we will discuss the operating systems including Windows Phone, Google Android, Windows 8 Phone and Apple iOS.

This is a SAGE sponsored activity.

SAGE on the Border/Alternatives

Caroline Ieto/Bruce Todres



Where: the Volen Center
1515 West Palmetto Rd., Boca Raton

When: Every Monday from 11AM to 1PM.

Welcome everyone, no reservation required.
This is a SAGE sponsored activity.



Wednesday Men's Drop-In

Ron Catena



Where: The Pride Center.

When: Every Wednesday from 1PM to 3PM.
Welcome all men, no reservation required.

This is a SAGE sponsored activity.

Wednesday Men's Drop-In

Can you believe it's March already? Do you remember the old saying, March comes in like a lion and goes out like a lamb?" However, quite frankly, that applies more to our friends up north than to us.

Coming as I do from Boston with its large Irish-American population, March was always a very important month socially. St. Patrick's Day is a major holiday that includes parades, parties, banquets and balls. Lots of balls.

Back to the SAGE Men's Drop-In. What a pleasure it is to see just about all of our snowbirds have returned. Arriving very late this year was "Chicago Bob" who promises never to be so late again. Bob's sunny disposition and sense of humor makes him very popular with the group. Also nice to see is Dr. David Goldberger. After an extended stay in NYC where he had to deal with some medical issues, the good doctor has returned and is looking "fabulous."

SAGE MEN'S SINGLES GROUP

John Chandler



Are you a single man who enjoys the company of other single men? If you do then we have an evening for you. Every 4th Monday of every month, SAGE Board member, John Chandler, co-ordinates cocktails and dinner at Tropics restaurant in Wilton Manors. Cocktails, lively conversation and flirting begin at 5:30. At 6:30 the party moves into the dining room where we enjoy a terrific dinner followed by complementary coffee. Prices are reasonable and the food is always wonderful (as is the company). **We usually wear red shirts so that we can all recognize each other.**

Our next dinner will be held on Monday, March 25th.

For reservations please contact **John Chandler @ 954.933.2963** or e-mail @ stonyman4u@aol.com and don't forget to wear your red shirt!
This is a SAGE sponsored activity.

SAGE AT STONEWALL

Bill Greeves



The February Book Club selection is: *Lake Overturn: a Novel* by Vestal McIntyre. We meet once a month to discuss books of interest to the LGBT community. We invite all readers to join us in engrossing conversation every month at the Stonewall Library. We will meet on **Saturday, March 9th, 2013 at 11AM** at the Stonewall, 1350 E. Sunrise Blvd., Ft. Lauderdale.

All readers are welcome, no reservation required. Any questions, please contact me. Thank you. Bill Greeves - 954.523.8656
This is a SAGE sponsored activity.

SAGE Women @ Golden Corral

Nancy Drennen



IMPORTANT! OUR VENUE HAS CHANGED!

Where: Golden Corral.

7401 Commercial Blvd. Tamarac

Phone: 954-623-6400

When: Noon, 2nd Thursday of every month.

Call Nancy @ 954.741.1540 for reservations.

This is a SAGE sponsored activity.

2013 Schedule: TBA

So many new members have been joining us every week for a couple of hours of interesting conversation as they share viewpoints, an abundance of humor and much friendly ribbing.

To all of you Drop-In guys who have given so generously to SAGE's annual "Give From the Heart" campaign, thank you. For those who have not had the opportunity to pull out your check books, please consider giving whatever you can.

The Men's Drop-In meets every Wednesday from 1PM to 3PM. Drop in and meet some of the most interesting and fun guys in South Florida. Happy St. Patrick's Day!

--Ron

This is a SAGE sponsored activity.

See You at the Movies



John Gearrity and Carl M. Galli



One of the most controversial films of the past two years, the October, 2012 release *The Paperboy* is our **March 18th SAGE Movie**. Directed by **Lee Daniels**, an out gay African-American filmmaker (whose previous movies include both Oscar-nominated *Precious...* and *Monsters Ball*), and based on the novel by **Peter Dexter**, this is an R-Rated movie which pushes the envelope in every conceivable way.

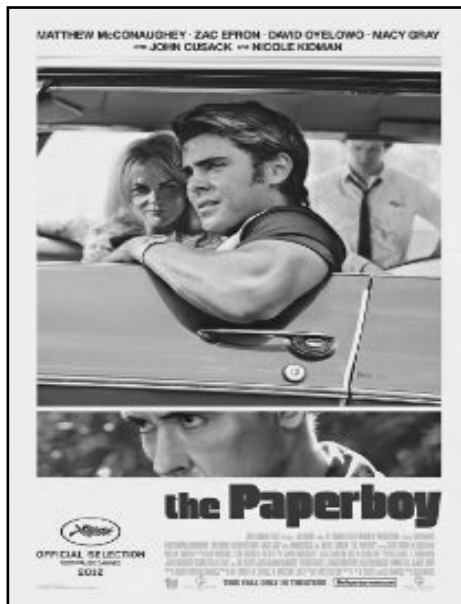
This will not be for everyone: There is shocking cruelty here, and racism, and homosexual fetishism, and explicit sexuality. There is also love, and honor, and, ultimately, redemption.

The acting by all involved is superb and raw. **Matthew McConaughey** and **Nicole Kidman**, in particular, redeem their oft-times public personas as merely pretty and vapid actors. **John Cusack** and **Scott Glenn** have never been better. And **Zak Efron** (half-naked through most of the film), **Macy Gray** and **David Oyewolo** are revelations.

Taking place in a late-1960's Florida swamp town, coming to terms with desegregation, it starts off as just another murder-mystery, with the McGuffin being "Who killed the sheriff?" But what it's really about leaves this as merely a hook upon which to hang a (somewhat) ragged narrative.

From IMDB.com: "It's hard for me to understand the scorn that has been heaped upon this film.... hard to understand why some critics have focused on certain aspects of the film: Zac Efron in his "tighty whities" or Nicole Kidman urinating on Mr. Efron... To focus on these rather minor points shows a deep misunderstanding of what this film is about... this film reflects the world as it is, and not as we want it to be.

I think this film is saying that our deepest need is for love, connection, and moral truth; but these needs become warped when



filtered through the lies, despair, and degradation that American society has offered up as the truth. Mainstream films never go here... Each character's story is that of connection or love that has been twisted or thwarted for various reasons... Through these characters, Lee Daniels is showing the damage done to human relations, forcing people to act in ways that are not pretty to watch, and so the world he shows us is not pretty. It's hard and brutal... Mr. Daniels world is the real world: flawed, messy, and hard to look at, but with humanity and the impulse to transcendence at its core."

The Paperboy was nominated for the Palm d'Or at Cannes. Miss Kidman for both the 2013 Golden Globe and the Screen Actors' Guild. And Mr. McConaughey took acting honors at both the

Austin and Central Ohio Film Critics Associations.

The Paperboy screens on Monday, March 18th at 4:15PM in Room 204 of the Pride Center. We will be showing the Director's Cut which runs 107 minutes. Dinner (and discussion will follow. **But, please remember, it is a hard-R rated film for good reason.**

This is a SAGE sponsored activity.

PAID ADVERTISING - PAID ADVERTISING - PAID ADVERTISING -

The Parish of Sts. Francis and Clare
*A Progressive Community in the Catholic Tradition
 Where We Welcome and Appreciate Diversity!*



Mass Times:
 Wednesday 7:00 PM
 Saturday 5:00 PM • Sunday 10:30 AM

101 N.E. 3rd St.
 Ft. Lauderdale, FL 33301

954.731.8173
www.stsfrancisandclare.org

PAID ADVERTISING - PAID ADVERTISING - PAID ADVERTISING -



Bob Goupil
 Cruise & Vacation Specialist
Expedia CruiseShipCenters, Fort Lauderdale
 Florida

Tel: (954) 306 2005 Cell: (954) 632 1439
bgoupil@cruiseshipcenters.com
www.cruiseshipcenters.com/BobGoupil

Household Pests
 •
 Lawn Spraying
 •
 Rodent Control
 •
 Termites
 •
 Bed Bugs
 •
 RESIDENTIAL
 COMMERCIAL
 •
 Licensed & Insured

(954) 920-BUGS (2847)



"Hello Aloha... Goodbye Bugs"

SAGE COMPUTER CLUB



Photo: Sharron Demarest

Where: Pride Center on Dixie Highway Building A in the AV Room 206. Call for directions if you need them @ 954.634.7219 or the Pride Center's switchboard @ 954.463.9005. When: Every Wednesday @ 4PM. Welcome everyone, no reservation required. This is a SAGE sponsored activity.

The past decade has seen tremendous growth in the power of home computing. Many of us have moved a good portion of our lives to our computers...banking, photo storage, Skype, Facebook, books and magazines, Netflix and whatever else may strike our fancy.

This newsletter most likely would not exist in its present form if not for email, the Internet, desktop publishing software, and digital photography...not to mention the computer

that helps our printer run his press.

While computers can make our lives easier and, in some cases more fulfilling, there is always a lot to learn. As in everything there are beginners, advanced users and very advanced users.

The SAGE Computer Club is the user-friendly place to go for laptop, tablet, smartphone, desktop computing and electronic reader assistance. Ken Goodman, president of SAGE, is the club's expert facilitator,

teacher and advisor. He has an in-depth knowledge of hardware and software and there is no question no matter how basic or difficult he cannot answer.

Any questions? Bring them to the SAGE Computer Club. Ask for Ken.

--Sharron Demarest

GIVE FROM YOUR HEART!!!

**You all belong to SAGE, the premier, most prestigious,
senior LGBT organization in south Florida.**

**All our events are designed to break even at best,
and MANY of them operate at a deficit.**

**Please help us to continue serving you and
your needs, as well as to continue our community
outreach efforts in the gay community.**

Won't you please give from your heart?

YOUR TAX DEDUCTIBLE

**contribution, small or large, will help ensure the
financial health and continuing success of Sage of South Florida.**

Thank you all for your generous hearts!!!

SAGE ARCHANGELS

WAYNE SCHREBE

THEODORE SINGER

SAGE ANGELS

GERALD HEINEMAN, GEORGE H. HIBBERD, MARTIN HOROWITZ

JOHN L. "MAC" MACINTOSH, JOE MARTIN, JERRY MURPHY

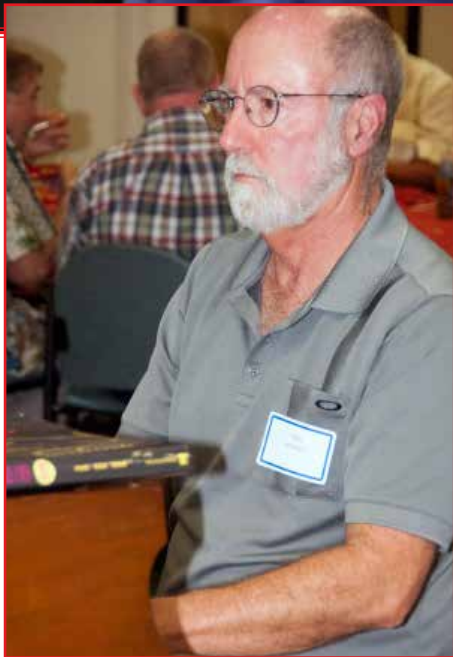
JACK MYERS, RICHARD PLANT, ALLEN SANDLER

CHARLES SCARCELLA, LEONARD H. SMITH

SAGE Spotlight: Mileston



mes Birthday Party



Photos: Sharron Demarest

Social-lites



Marc Flanagan

The "Ides of March" will treat SAGE members delicately, evidenced by the events that we have this month. Pride Weekend will be commemorated with three activities. The kickoff is Pridefest, which will occur Saturday and Sunday afternoons, March 9th and 10th in and around War Memorial Auditorium. SAGE will have a display, together with other social service agencies. Enjoy the continuous entertainment, food, and booths while celebrating GLBT accomplishments.

Here's hoping you are one of the few members with tickets for the next SAGE play at Broward Center... **Flashdance**. The curtain goes up at 2PM on Sunday, March 10th.

An addition to our social calendar on that day is a concert featuring pianist (and SAGE member), Dr. Deric Bownds. This writer was captivated when he "tickled the ivories" at the recent SAGE Milestone Birthday gala. Dr. Bownds will provide a free program beginning at 2:30PM at the Pride Center.

Three weeks later is the SAGE Annual Meeting at which we will elect our new Board of Directors. The festivities take place from 2PM to 6PM on Sunday, March 31st.

Three reasons why you should attend:

The Venue: *The Westin Cypress Creek (@ the NE corner of I-95 and Cypress Creek Road).*

The Reception: *In the courtyard (with a complimentary smoothie).*

The Entertainers: *Glenn and Cissy, who many of you know from Lester's of Margate.*

Remember, whatever event SAGE sponsors, I hope to see you there!

SAVE THE DATES:

Sunday, April 28th, 12-5PM, SAGE Annual Picnic @ Colohatchee Park in Wilton Manors. (See flyer for directions.)

Sunday, May 12th, 2PM, **War Horse** at Broward Center.

Sunday, May 19 5p-8p, Dinner at Chuck's Steak House.

This is a SAGE sponsored event.

PAID ADVERTISING - PAID ADVERTISING - PAID ADVERTISING - PAID ADVERTISING - PAID ADVERTISING

WE ARE COMFORT KEEPERS®



Our Family Is Here To Give Comfort To Your Family

Comfort Keepers® provides the kind of trusted, in-home care that helps people maintain full and independent lives, right in the comfort of their own home.

Owned by Ft. Lauderdale natives, David and Cindy Mahoney. Call for a free consultation.

954-825-0155
Ft. Lauderdale Area



© 2008 CK Franchising, Inc. License #230645

SERVICES
• Companionship
• Cooking, Light Housekeeping
• Errands, Shopping
• Incidental Transportation
• Laundry
• Recreation, Crafts
• Grooming, Dressing Guidance
• Medication Reminders
• Alzheimer's & Dementia Care

W W W . C O M F O R T K E E P E R S . C O M



SAM the BARBER

Mens Hot Towel Facial Massage
with this card only \$9.00!

Time Square Center. S.E. corner of
Federal Highway and Oakland Park Blvd.
Across from Target. Limited time offer!

By appointment only
954.561.0665



AMERICAN TAX & INSURANCE SERVICES

"The safe return of your money is our top priority"

GUARANTEED RETURN FIXED ANNUITY 1ST YEAR BONUS INTEREST RATE



10.00%

PLUS A LIFETIME INCOME RIDER GUARANTEED TO
GROW AT 6.5% WITH INCOME FOR LIFE

- 10% Interest bonus credited on Day 1 on total deposit
- Principal & interest guaranteed • No up-front fees or charges
- Interest grows tax deferred • Interest available monthly
- Representing 60 top rated companies

Rates effective 01/03/13 subject to change. Company rated A+ Superior by A.M. Best.

Al Cicotte & Kevin Palombo
AMERICAN TAX & INSURANCE SERVICES
2929 E Commercial Blvd, 8th Floor, Penthouse D
Fort Lauderdale, FL 33308

954.302.3228

www.american-tax-and-insurance.com



AMERICAN TAX & INSURANCE

"The safe return of your money is our top priority."

BIG SAVINGS ★ COMPLETE TAX PREPARATIONS



\$49

APPOINTMENT
MUST BE MADE
BY MARCH 31ST, 2013

CALL FOR YOUR
APPOINTMENT TODAY,
OUR BOOKS FILL UP FAST!

AL CICOTTE & KEVIN PALOMBO
AMERICAN TAX & INSURANCE SERVICES
2929 EAST COMMERCIAL BLVD.
8TH FLOOR PENTHOUSE D
FORT LAUDERDALE, FL 33308
WWW.AMERICAN-TAX-AND-INSURANCE.COM
954.302.3228

*PERSONAL INCOME TAX RETURNS ONLY.
OFFER FOR AGES 50 AND OVER.

Don't miss out on complete income tax
preparation for only \$49 from our tax
professionals. Our firm believes in offering
the community one great low price for preparing
your federal and state income tax returns.

SAGE On the Border/Alternatives



Caroline Leto
Bruce Todres

Where: the Volen Center

1515 West Palmetto Rd., Boca Raton

When: Every Monday from 11AM to 1PM.

Welcome everyone, no reservation required.

This is a SAGE sponsored activity.



Summer was over, fall had arrived and once again Richard held a potluck for us at his home. It was great fun. An event that always serves to bring us together in friendship and much appreciated by all.

In January, SAGE had its first Milestone birthday gala and happily, three from Alternatives were celebrants...Ann, Al and Larry. The event was warm and wonderful with plenty of table-hopping as we all made sure to say hello to friends. We look forward to a repeat performance.

During one of our Monday morning meetings, the wonders of China were brought home to us when Mary and her partner Deb kindly showed us pictures taken on their recent trip. One of the highlights was their visit to a senior center, comprised of

four floors of activities. Many of us will never get to see China in person and one of the perks of SAGE on the Border/Alternatives is that travel experiences are shared.

Snowbird season is upon us and we welcomed back Brenda from Philadelphia, a delightful addition to our group who first came to us in March of 2012.

In October Bill joined our group and a newcomer, Al, brought along his visitor, Antonio. Antonio came all the way from Italy and is a friendly, outgoing tour guide in his country with lots of charming stories to tell.

Just a bit of info for you...in December Ann and I were part of a group of seniors that participated in the SAGE sponsored Smart-Ride Pit Stop #4. We may be seniors but we are no slouches. It was a great experience. The bikers were so grateful for our help and we of course, for theirs.

Our numbers seem to be growing and that is a good thing but our desire to maintain our intimate atmosphere prevails. We will try our best to keep it up and not let our continuing growth change what we all love about the group. If you haven't visited us, come on up and see what we are about.

Til next time...

-Caroline

Occasional Thoughts



Carol Youngblood

Did you read about the radio announcer who says that the plastic on juice boxes is impregnated with gay chemicals and causes little boys to want to have babies? Now we finally know what causes male homosexuality.

You knew, of course, that homosexuality was somehow involved in the football player's fake girlfriend mess. Why are athletes so afraid to come out?

Some Canadians did a study of 87 men and women, both gay and straight. Their thesis was that gay men who had come out would be less stressed than those who hadn't. The results, however, showed that the most stressed of all the group were straight men.

I just read **Ken Follett's** *World Without End*, set in the 13th century. In it two nuns have a sexual relationship. We know it happens, but it isn't often acknowledged.

I've read a few books lately that are interesting. One is *Hush Now* by **L. A. Green**, a kind of fairy tale about a plantation owner's daughter who falls in love with one of her slaves. She marries a gay man and they visit his lover in Atlanta. They also go to an underground gay bar there. It's called a story that didn't happen but might have.

I also read *The Well of Loneliness*. It's a hard book, not particularly well written, 437 pages of narration with no dialog. The cover says "A 1920's Classic of Lesbian Fiction," and that's what I always thought it was. But today she would not think of herself as a lesbian, but as a transgender person. She was named Stephen; she was built like a boy, liked boys' pursuits,

and thought of herself as a boy. She lived in rural England until World War I, when she became an ambulance driver in France. There she met Mary, with whom she made a life. They lived in Paris with friends like them. They also knew "conventional" gays, but Stephen didn't feel comfortable with them. I won't tell you the end of the story because somebody might like to read the book.

The book I most enjoyed reading was *Victory, the Triumphant Gay Revolution* by **Linda Hirshman**. It's the story of the gay movement in the United States. I knew what the steps in the movement were, but this gave all the details. We learn the names of all the major figures in the movement, what they did for a living, what they were like, how successful they were. We learn what tactics they used at each juncture. Sometimes they wrote; sometimes they marched; sometimes they approached politicians. I was not an activist until the 70's, but I was around for some of the earlier stuff. I knew about the Mattachine Society; I read *One* magazine; I lived in LA when the Metropolitan Community Church was founded. I subscribed to the magazine of the Daughters of Bilitis. Therefore, I could kind of put myself into the history. One of the things that I noticed was that at first the object was gaining acceptance in the larger community, and that was difficult to get. However, when marriage became the aim, progress came much more quickly. I believe, with the author, that the gay revolution is already won. There will be setbacks, of course, but nothing is going to stop the momentum.



Safe Choice for Surgery



Broward Health Imperial Point recently received an 'A' in a national Hospital Safety ScoreSM by *The Leapfrog Group*[®] which graded hospitals on their ability to keep patients safe from infections, injuries, and medical and medication errors. That's good to know when deciding on a hospital for your surgery. With the resources of Broward's largest health system and the highest level of patient safety, Broward Health Imperial Point is a smart, safe choice.

To find a physician, call 954.759.7400 or visit BrowardHealth.org/physicians.

Surgical Services
Inpatient • Outpatient
Minimally Invasive • Robotic



The [Leapfrog] Hospital Safety ScoreSM grades hospitals on data related to how safe they are for patients. For more information, visit HospitalSafetyScore.org.

SAGE BIRTHDAYS FOR THIS MONTH

The SAGE Board would like to acknowledge the following members whose birthdays are this month as well as any other member whose birthday that we don't have.

If, when you renewed your membership or became a new member you did not give us your birthday, you may call the office and leave the information at 954.634.7219 or e-mail us @ sagesofl@gmail.com.

First Name	Last Name	Birthday	First Name	Last Name	Birthday
Stuart	Seader	03/05	Richard	Gilmer	03/17
James	Earley	03/06	David	Millan	03/17
David J.	Hannigan	03/06	Eileen M.	Lancella	03/18
Richard	Hess	03/07	Bill	Einhorn	03/24
Tom	Oberly	03/07	Robert	Goupil	03/24
Stephanie	Soriano	03/07	Bunny	Rubino	03/24
Albert C.	Kosow	03/11	John W.	Francisco	03/28
Bob D.	Brummer	03/12	Norman	Peters	03/29
Greg	Hernandez	03/14	Carl M.	Galli	03/30
Philip A.	Collier	03/15	Marc	Horowitz	03/31
Jonathan	Chapman	03/17			

New Members

First Name	Last Name	Date Joined
John	Actman	01/13
Richard	Dehn	01/13
Brenda	Goodis	01/13
Richard E.	Herman	01/13
Gary	Payne	01/13
David	Treece	01/13

5 Year Anniversaries

First Name	Last Name	Date Joined
Michael	Keller	01/08

10 Year Anniversaries

First Name	Last Name	Date Joined
Robert	Lord	01/03
Sal	Orlando	01/03
Bruce	Watts	01/03

SAGE NEEDS YOU!

Please Join or Renew Today.

NAME: _____ **Birthday: Month** _____ **/Day** _____

ADDRESS: _____

CITY: _____ **STATE:** _____ **ZIP:** _____

TELEPHONE: _____ **CELL:** _____



MEMBERSHIP APPLICATION

COMMITTEE INTEREST: _____

E-MAIL:
Would you like to receive the

Would you care to make a tax-deductible contribution to SAGE included with your dues? Yes No

CIRCLE ONE: RENEWAL NEW MEMBER

Please enclose a check in the amount of \$35.00 made payable to SAGE OF SOUTH FLORIDA

Mail To: SAGE of South Florida, PO Box 70516, Oakland Park, FL 33307

SENIOR ACTION IN A GAY ENVIRONMENT

SAGE Of South Florida, Inc.
Balance Sheet
12/31/12

Current Assets:			
	Cash and Cashj Equivalents	74,447	
	Prepaid Expenses	<u>3,100</u>	
	Total		77,547
Fixed Assets:			
	Land		1
Other Assets:			
	Security Deposits	<u>100</u>	
	TOTAL ASSETS		<u>77,648</u>
Current Liabilities:			
	Prepaid Income		2,605
Fund Balance			
		<u>75,043</u>	
	Total Liabilities and Fund Balance		<u>77,648</u>

Income and Expenses
Year Ended 12/31/2012

Income:			
	Program Service Revenue	27,791	
	Less: Program Costs	<u>28,167</u>	(376)
	Membersip Dues		12,070
	Contributions		10,520
	Advertising		4,196
	Interest		195
	Raffles		1,330
	Miscellaneous	<u>515</u>	
	Total		28,450
Expenses:			
	Newsletter		10,654
	Office		2,187
	Telephone		182
	Postage		2,420
	Rent		7,975
	Insurance		1,545
	Community Events		2,919
	Other	<u>531</u>	
	Total		<u>28,413</u>
	Excess of Income Over Expenses		<u>37</u>

ZUCKERELLO'S
3017 East Commercial Blvd.
Fort Lauderdale

**50% OFF
ENTREE**

With purchase of another of equal or greater value
Valid 7 days - after 6pm

Must present this coupon. Discount taken from lower priced entrée.
Not valid with Early Bird Specials or with any other offer.
1 coupon per table. Expires 03.31.13

EARLY BIRD MENU
7 Days a Week 4pm-6pm
Complete Dinners starting at **\$12**

HAPPY HOUR
7 Days a Week 4pm-6pm
AT THE BAR ONLY

ZAGAT RATED 2011 VERY GOOD TO EXCELLENT

Like us on **f** **954-776-4282**
Zuckerellos.com

ANDREWS DINER
"A Family Restaurant"
Hosts: Angelo, Gerri & Marla

2980 N. Andrews Avenue
Fort Lauderdale, FL 33311
954.563.3555

Hours
Monday, Tuesday & Wednesday 7 AM - 3 PM
Thursday & Friday 7 AM - 8 PM
Saturday 7 AM - 3 PM
Sunday 7 AM - 1:30 PM

CHIC OPTIQUE

KAREN CARROLL
JULIE SLATER
ED FIORENZA

EYE EXAMS
& CONTACT LENS FITTINGS
BY INDEPENDENT DOCTOR
OF OPTOMETRY

2228 WILTON DRIVE
WILTON MANORS, FL 33305

954.567.3937
WWW.CHICOPTIQUE.NET


Show Us Your SAGE card and get a 20% discount!

**CALL FOR A
FREE
CONSULTATION**


**CONFUSED
ABOUT THE
CHANGES
IN MEDICARE?**

Medicare Specialist offering:
Low Cost Medicare Supplements
Part D Prescription Drug Plans
No Cost Medicare Advantage Plans

Very Affordable Rates On:
Long Term and Home Care Coverage
Life and Disability Insurance
Guaranteed Income for Life



Call Gary Kempler at
954-328-5418
or send an email to
garykempler@ffig.com

 **FUTURITY FIRST**
INSURANCE GROUP

SAGE Cruisers

Once again we have chosen Eric Muhlitner of CruiseDeals.com to help with our "What Cruise" arrangements. Most of us know him -and he in turn knows most of us. So whatever your request, please make sure to contact him ASAP to ensure you get what you want. He will try his best to accommodate all of us.

This time, though some of the ports-of-call may be familiar, we are trying a different Cruise Line: Holland America, and its ship the Eurodam.

At 7 nights, it's a slightly longer cruise than we are used to booking. But this will allow more time for on-board revelry and camaraderie.

As we have in the past, we will be publishing any SAGE Cruise updates and reminders in the Newsletter.

If you have any questions, please call Eric directly at **800.668.6414, extension 146.**

from Eric:

- Pier assistance on and off the ship can be arranged and notated on the reservation.
- Special dietary needs can be arranged and notated on the reservation; there may be some dietary needs that cannot be arranged due to certain cruise line limitations. This is on a case by case basis.
- **All guests must be checked in and onboard the *Holland Eurodam* no later than 3 pm EST on departure date, December 1st, 2013.**
- **Late arrivals will be denied boarding without refund.**
- *Passports are highly recommended, but not required if a guest is a US born citizen. Passports must have at least 6 months validity on them from the return date of the cruise (ex: passport expiration must be at least June 2nd, 2014). A state issued Birth Certificate AND a valid state issued photo I.D., such as a Driver's License or State Photo I.D. can be used in lieu of a passport, as of December 1, 2011. Acceptable Certified Birth Certificate copies can be ordered online at www.vitalcheck.com. It can take up to 3 weeks to get delivered so please do it sooner than later. Birth Certificates directly from a hospital are not acceptable.*
- **Special Needs Staterooms for person with disabilities**
The Special Needs (HCP) stateroom categories are on limited availability and are on a first come first served basis. Rates will be quoted by request. These ADA staterooms are HCP type-wheelchair accessible and have roll-in shower entry. These sell out fast so please book ASAP if needed. (Medical certification from your doctor may be needed. Please discuss with Eric.)

Dinner Seating Options

Each of you can choose what time you would like to dine. There are 3 choices: 6PM (Main), 8:30PM (Late), and Anytime Seating (between 6 and 9:30PM). However, Eric recommends that if you want to eat dinner with our group you pick either the Main or Late Seating.

Travel Insurance

Because most of us are seniors, and sometimes not in the best of health, we recommend that you purchase Travel Insurance to protect you should unfortunate circumstances arise. You may buy Insurance from either CruiseDeals, InsureMyTrip.com, or any other agent of your choosing.

(See other side)

SAGE "WHAT CRUISE" FOR 2013



"Come Sail Away, Come Sail Away, Come Sail Away with..." SAGE

Onboard Holland America's *Eurodam*

7 Night Eastern Caribbean: Including Turks & Caicos, Puerto Rico, U.S.V.I., and Bahamas,

Departing from Ft. Lauderdale: Sunday, **December 1, 2013 at 4PM**

Returning to Ft. Lauderdale: Sunday, **December 8, 2013 at 7AM**

Go to CruiseDeals.com Website.

You Pick Out Your OWN Deck, Cabin, Regular Price, Etc.

Afterwards, Call Eric Muhlitner at 800-668-6414 -EXT 146

(Mon-Thur 1-10PM/Fri 12-8) to Arrange the SAGE Group Rate for You

(Fares NOT Guaranteed Until You Deposit*)

Only 1 Person in a Cabin Must be age 55 or older. Only 1 person in a Cabin Must be a SAGE Member.

Dining Options for ALL: 6 PM; 8:30 PM; or OPEN Seating/ Table Size: You decide

Below are Per-Cabin SAMPLE FARES as of 2/20/13

Interior category L: 185 sq ft, queen or 2 double beds, bathroom with shower, TV

· Double occupancy: \$499 pp + \$120.19 taxes pp = \$619.19 pp or \$1238.38 total

· Single Occupancy: \$798 + \$120.19 taxes pp = \$918.19 total

Large Ocean View category F: 185 sq ft, queen or 2 double beds, non-obstructed view picture window, bathtub with shower, TV

· Double occupancy: \$619 pp + \$120.19 taxes pp = \$739.19 pp or \$1478.38 total

· Single Occupancy: \$990 + \$120.19 taxes pp = \$1110.19 total

Deluxe Ocean View Verandah category VE: 249 sq ft, queen or 2 double beds, floor to ceiling window, private verandah, sitting area, bathtub w/ shower, TV

· Double occupancy: \$799 pp + \$120.19 taxes pp = \$919.19 pp or \$1838.38 total

· Single Occupancy: \$1598 + \$120.19 taxes pp = \$1718.19 total

Superior Verandah category SY: 389 sq ft. (Eric can get more while inventory is available. But can only add them 1 at a time as they are booked and deposited on.)

· Double occupancy: \$1299 pp + \$120.19 taxes pp = \$1419.19 pp or \$2838.38 total

· Single Occupancy: \$2598 + \$120.19 taxes pp = \$2718.19 total

On Board Credit is \$25 per Cabin

*Deposit is \$350 per Cabin

Deposit Must be Paid by Friday, June 28th

Final Payment Must be Paid by Friday, September 13th

We highly recommend that you purchase Travel Insurance.

Either from CruiseDeals, InsureMyTrip.com, or any other agent you choose.

(See other side)

LIFE IS A PICNIC!!!

WHEN IT'S THE SAGE ANNUAL PICNIC!

Featuring Our First Ever Horseshoe Tournament:
Winner Takes Home a Fun Prize!

WHEN: Sunday, APRIL 28th
TIME: @ 12noon
WHERE: Colohatchee Park
1975 NE 15th Avenue
Wilton Manors, FL

There is limited parking and we recommend car pooling. If you would like to shuttle from the Pride Center to the park, call the office and arrangements will be made.

Directions to Colohatchee Park

From the 5 Corners Intersection:
Take 26th Street, East to the next corner, which is NE 15th Avenue.
There is a 7 11 convenience store on the South West corner.
Turn Right (south) on NE 15th Avenue until you see a bridge.
Colohatchee Park is on your right, there is a right-hand turn lane just before the bridge and the parking lot is within the chain link fence.



Hot Dogs & Hamburgers, All the Fixins & Soda

SAGE ANNUAL PICNIC - 2013

Paid Reservations must be received no later than 1PM, Wednesday, April 24, 2013

Members: \$15 _____ Non-Members \$17 _____ My Phone # _____

Name: _____

Name: _____

Name: _____

Name: _____

Mail to: SAGE
P.O.Box 70516
Oakland Park, FL 33307

Questions? 954.634.7219

This is a SAGE Sponsored Event

SAGE Annual Meeting, Awards Ceremony & Elections

An Elegant Afternoon by the Waterfall at

THE WESTIN FORT LAUDERDALE

400 Corporate Drive, Ft. Lauderdale, FL. 33334

954-772-1331

Sunday

March 31, 2013

2 - 5PM

2:00PM-3:00PM - Reception -Alfiere's Patio

Welcome by Butler-Passed Westin Energizing Non-Alcoholic Smoothies Shooters
Cocktails (Cash Bar) & Mixer - Waterside

Introducing to SAGE, for your Listening & Dancing Pleasure: **Glenn & Sissy**

3:00PM-4:30PM - Grand Menu - Keys Ballroom

Salad:

Mix of Tossed Garden Greens with Sliced Vine Ripe Tomatoes, Cucumbers, and Julienne Carrots,
with Choice of House Vinaigrette or Creamy Ranch Dressings

Entrée Choices:

Chicken Breast Key West -enveloped in Pepper Jack Cheese, Key Lime Beurre Blanc , Avocado and
sautéed Sweet Plantains -with Tropical Rice **or**

Ancho-Marinated Flank Steak in a Tarragon-Mushroom Sauce -with Twice-Baked Potato **or**

Grilled Salmon in Red Onion Soubise, fine herbs & pommery mustard cream -with Traditional Rice Pilaf

All Accompanied by the Season's Freshest Vegetables with Freshly Baked Rolls and Creamy Butter

Beverages: Freshly Brewed Starbucks Coffee, Decaffeinated Coffee and Select Tazo Teas or Iced Tea

4:45PM - Dessert Service

Creamsicle Parfait

(or Sugar-Free Dessert upon request to server)

Pricing: \$40 @ Members & \$45 @ Non-Members

Reservations Must be Received No Later Than 1PM Wednesday, March 27, 2013

NO REFUNDS! NO RESERVED TABLES! PLEASE ARRIVE with YOUR ENTIRE PARTY

SAGE ANNUAL MEETING & DINNER at the Westin

_____ MEMBERS @ \$40.00 & _____ NON-MEMBERS @ \$45.00 My Phone Number: _____

Name: _____ Write-in Your Choice of Entrée: _____

Name: _____ Write-in Your Choice of Entrée: _____

Name: _____ Write-in Your Choice of Entrée: _____

Name: _____ Write-in Your Choice of Entrée: _____

Mail with Payment to: SAGE at PO BOX 70516, OAKLAND PARK, FL 33307

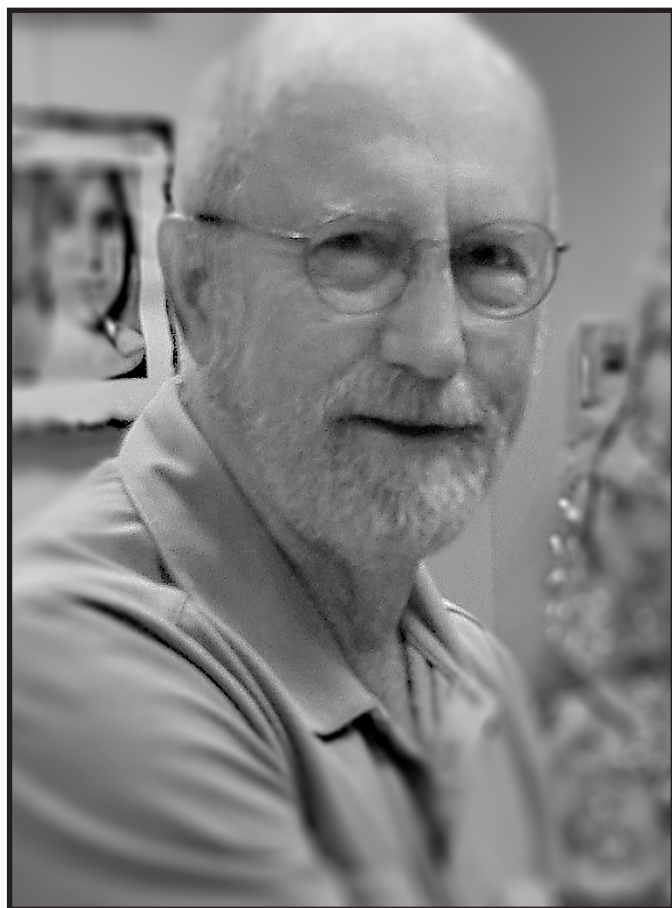
Questions: Call the SAGE office at (954) 634-7219

A SAGE-SPONSORED ACTIVITY

SAGE of South Florida

Proudly Presents...

Dr. Deric Bownds in Concert



Enjoy a Program of
Classical Piano Music.

Free of Charge.
Concert is Open to the Public.
No reservations required.

Sunday, March 10th at 2:30PM.
Pride Center
2040 N. Dixie Hwy.
Wilton Manors, FL

*Dr. Bownds is a well-known Pianist and a
Professor at the University of Wisconsin.*



FREE CONCERT



Please GIVE FROM YOUR HEART

***On this upcoming St. Valentine's Day won't
you give from your heart?***

***You all belong to SAGE, the premier, most
prestigious, senior non-profit LGBT
organization in South Florida.***

***All our activities are designed to break even
at best, and SEVERAL have to be subsidized
by our Organization.***

***Please help us to continue serving you and
your needs, as well as continuing our
community outreach efforts within both the
LGBT and the mainstream communities.***

***On this St. Valentine's Day won't you please
give from your heart?***

***YOUR TAX DEDUCTIBLE contribution*, small
or large, will help assure the financial health
and continuing success of
SAGE of South Florida.***

Thank you all for your generous hearts!!!!

SAGE'S 2012 GIVE FROM THE HEART CAMPAIGN

**Name: _____ enclosed is a check for \$ _____
as my donation to SAGE's 2012 Give From the Heart Valentine's Campaign.**

***As a 501©3 Nonprofit, any donations SAGE receives are tax deductible as
allowed by IRS laws and regulations.**

Mail with your donation to:

SAGE at: P.O. BOX 70516, Oakland Park, FL 33307

**Questions? Call the SAGE Office at: (954) 634-7219 A SAGE-Sponsored Activity
*Donors of \$500 or more will be listed as Archangels. All others will be listed as Angels.
in future issues of the Newsletter. All are SINCERELY and GRATEFULLY APPRECIATED!***

SAGE 2013 Activities Calendar

MARCH 2013

SUNDAY	MONDAY	TUESDAY	WEDNESDAY	THURSDAY	FRIDAY	SATURDAY
					1	2 9:30AM Board Meeting SKOLNICK Ctr. LUNCH & LEARN 12:30 PM Call Office @ (954) 634-7219 for reservation
31	4 11AM - 1PM SAGE On the Border Co-Ed / Alternatives @ Volen Center in Boca	5	6 1 PM Men's Drop In @ Pride Center 4 PM COMPUTER CLUB @ Pride Center	7	8	9 11AM SAGE at Stonewall – Book Club @ Stonewall Library Call Bill Greeves 954-523-8656 Pride Fest @ Holiday Park
10 Daylight Savings Time Begins Pride Fest @ Holiday Park 2 PM Flashdance @ Broward Center 2:30PM Piano Concert with Dr Bownds @ Pride Center	11 11AM - 1PM SAGE On the Border Co-Ed / Alternatives @ Volen Center in Boca	12	13 s 1 PM Men's Drop In @ Pride Center 4 PM COMPUTER CLUB @ Pride Center	14 Noon SAGE Women's Lunch @ Golden Corral – Tamarac - call Nancy for more info (954) 741-1540	15	16
17 St Patrick's Day	18 1AM - 1PM SAGE On the Border Co-Ed / Alternatives @ Volen Center in Boca 4:15 PM SAGE Movie "the Paperboy" @ Pride Center - dinner TBD	19	20 1 st Day of Spring 1 PM Men's Drop In @ Pride Center 4 PM COMPUTER CLUB @ Pride Center	21	22	23
24 Palm Sunday <hr/> 31 Easter Sunday 2 - 5 PM SAGE Annual Meeting @ The Westin Ft Lauderdale	25 11AM - 1PM SAGE On the Border Co-Ed / Alternatives @ Volen Center in Boca Men's Singles DINNER @ TROPICS - call John C (954) 933-2963	26 Passover Begins	27 1 PM Men's Drop In @ Pride Center 4 PM COMPUTER CLUB @ Pride Center	28	29 Good Friday	30

SAVE the DATES:

April 28th Sun

SAGE Annual Picnic @ Colohatchee Park in Wilton Manors

May 12th Sun

War Horse @ Broward Center

May 19th Sun

Dinner @ Chuck's Steak House (Commercial Blvd.)