

The SAGE

The Newsletter of SAGE of South Florida

April 2015

LGBTQ – So Near Yet So Far

By Ann C. Smith

Do you know what's going on in Palm Beach County? Well, I'll fill you in on just a fraction of the scene.

By the time we reached COMPASS in Lake Worth on February 14th, 50 members of PALM BEACHES PRIME TIMERS were gathered around 5 tables, all decorated for Valentine's Day. George Anderson, President of Palm Beaches Prime Timers had invited us (Caroline Leto, Frank Piasecki, Richard Ryder and me) to attend their usual monthly meeting to talk about SAGE and to demonstrate how we hold our weekly co-ed "Alternatives" (SOBA – SAGE on the Border/Alternatives) meeting at the Volen Center in Boca Raton. To our surprise, no one present was a SAGE member or had ever heard of SAGE.

Following their impressive business meeting (these men are really thoroughly engaged in life) and a brief explanation by Frank and me about Sage of South Florida activities, we broke up into 5 groups. For one half hour we demonstrated how our weekly meeting at the Volen Center is conducted using the "Guidelines" Caroline formulated six years ago as she thought about ways people could get to know each other in a friendly, safe environment.

During the course of the discussion I found myself seated next to Tony, a man who had been at Bronx Community College in the late seventies. Well – I had been there too! He was a student – I was a teacher – meaning he was a bit younger than me. Small world. It also turned out that all members of my group were from the New York City area, and when we got to one of our topics "9/11", we learned we were in New York City during the attack and each had a personal memory to share that we could all closely relate to.

In response to one of the questions, "What have you made yourself?" one man said he created a family, like his relatives did. He

was attending the meeting with his partner. I couldn't help thinking about how valuable and precious organizations like Prime Timers and SAGE are to the LGBT community, and it happened in my time.

Caroline's group "enjoyed" the group experience saying they got to know each other better after the first go-round of sharing the "hi-lites" of their week. In fact one of her group members was so receptive, he plans to attend our next meeting of "Alternatives" in Boca.

Richard found the experience of facilitating a group to be "very enjoyable". He said there were "many smiles, some laughs, and a moment of seriousness about 9/11" but the men were "always attentive". This "getting to know people better" method worked and "the 30 minutes went quickly".

I think Frank summed up our experience in an e-mail he wrote to me. "I was impressed with two things: The Compass facility in Lake Worth and the sincerity of the participants who attended the meeting. To me it is gratifying to know that there are LGBT centers in multiple locations where meetings and activities can be conducted for the benefit of our community. Participants for the discussion group activity were incredibly cordial, responsive, and cooperative. I applaud the efforts of our friends just to the north of us who work to provide social activities and involvement for the benefit of so many. Like my colleagues who assisted with the discussion activity, I observed tremendous potential with the participants to develop their group into a dynamic organization for the benefit of others. The torch has been ignited and I hope it provides illumination for many years to come."

At George's signal, the groups broke up to enjoy mingling and eating a wonderful Valentine's Day cake. Even "little puppy", Tony's pet from the "Peggy Adams Animal Rescue" in Palm Beach County, barked her approval.

SAGE OF SOUTH FLORIDA, INC.

2040 N. Dixie Highway
Wilton Manors, FL 33305

Mailing Address:

SAGE of South Florida
PO Box 70516
Oakland Park, FL 33307

Message Line: 954.634.7219

All Copy Deadline: 8th of the Month

Advertising Deadline: 1st of the Month

Email to Editor: sagesofl@gmail.com attn: Editor

Website: www.sagewebsite.org

OFFICERS

President	Kenneth Goodman
Vice President	Ron Catena
Secretary	Ann C. Smith
Assistant Secretary	Frank Piasecki
Treasurer	Inez Pasher
Assistant Treasurer	Allen Churchman

BOARD MEMBERS AT LARGE

Carl Barton, John Chandler, Carl M. Galli, John G. Harris, Dr. Martin Horowitz,
Gary "Lee" Lawson, Bruce Williams

COMMITTEE ASSIGNMENTS

Advertising	Inez Pasher
Archivist	Hank Brooks
Book Club	Philip Collier (F)
	Alan Dorfman (F)
Computer Club	Ken Goodman (F)
Education	
Funding	John G. Harris
Lunch and Learn	Ken Goodman
Membership	Ann Smith (C)
	Nancy Drennen
SAGE Co-Ed Discussion Group	Frank Piasecki
SAGE Camera Club	John G. Harris (C)
SAGE Men's Drop-In	Ron Catena (C)
	Carl Barton (F)
Men's Singles	John Chandler
Movie Club	Carl M. Galli (F)
Newsletter Editor	Ken Goodman
Associate Editor	John G. Harris
Contributing Columnists	Deric Bownds, Ph.D
	Carol Youngblood
	Bruce Williams
Office Manager	Gary "Lee" Lawson
Pride Center (SAC) Liaisons	Carl Barton
	Gary "Lee" Lawson
	Bruce Williams
Public Affairs	Ron Catena
SAGE on the Border/Alternatives	Ann Smith (C)
	Caroline Leto (F)
	Frank Piasecki (F)
SAGE Women	Nancy Drennen
	Jean Johnson (Advisory)
Social Activities	John G. Harris (CC)
	Carl M. Galli (Advisory)
Support	Leo Glickstein
	Godfrey Isaacs
	Inez Pasher
Volunteer Coordinators	Frank Cavanaugh
	Ken Moore
Newsletter Mailing & Lunch & Learn Set-Up	John G. Harris
Webmaster	Jay Brundage

Appearance of an advertisement in this newsletter does not constitute endorsement by SAGE of South Florida, Inc. of the service being offered. We thank our advertisers for helping us to pay for printing this newsletter.

SAGE Editorial Policy

SAGE welcomes contributors to this newsletter. An author may request their entry to be "anonymous." However, the submission as received by SAGE must be accompanied by the full name and address of the author. Items will be published at our discretion. If we feel that we cannot publish a submission anonymously, we will contact the author. We reserve the right to edit items for size considerations, clarity or standards of decency.

Cover Story: Milestone Birthday Party & Presenting A Pin

SAGE Mission Statement	1
SAGE Advertising Policy	1
SAGE Friendly Support	1
Reminder from the Board	2
SAGE Members in Need	2
Sharing SAGE with Others	2
SAGE Meetings	3
SAGE Co-Ed Discussion Group	4
SAGE Camera Club	4
Social-Lites	5
Mens Drop In	5
SAGE Spotlight	6, 7
Help Wanted	8
In Memoriam	9
Corrections	9
See You at the Movies	10
Milestones	11

FRIENDLY SUPPORT PROGRAM

We'd like to think we are not merely fair weather friends, but people who really care about our SAGE family. If you know of any SAGE member who would appreciate a friendly call, is sick, in the hospital, recently lost a loved one, or just needs a note of cheer, please contact:

For women — Inez Pasher @ 954.563.2814.

For men — Leo Glickstein @ 954.935.5799.

This is a SAGE sponsored activity.

SAGE MISSION STATEMENT

SAGE of South Florida is a non-profit organization for Senior action in a Gay Environment to enrich the lives of the GLBT senior community through membership inclusive of age, gender, race, nationality and religion. We believe this can be accomplished by sponsoring social alternatives To provide personal interaction, offering educational opportunities to deal with the special needs of aging, and promoting contact with the isolated and homebound persons of our community. SAGE is also an advocate for the concerns and needs of the senior community at large, providing referral information on community resources and promoting inter-generational communication in the GLBT community. SAGE was founded in 1994 as a Florida "not for profit." Corporation. (Federal Tax-Exempt status of 501(c)3 allowing tax-deductible donations.)

Our monthly newsletter is partially underwritten by advertising revenue. We have a written fee schedule for various sizes and number of months. An insert, instead of display advertising, is also available for business and organizations at a very reasonable rate. Contact the SAGE office at 954.634.7219 or email at sagesofl@gmail.com for more information. Appearance of an advertisement in this newsletter does not constitute endorsement by SAGE of South Florida, Inc. of the service being offered. We thank our advertisers for helping us pay for printing this newsletter. Do you have friends or family who own a business? Ask them to place an ad in THE SAGE. We appreciate our business supporters. As members, let's support them in return.

SHARING SAGE WITH OTHERS

Reconnecting with old friends and meeting new acquaintances is a great part of the SAGE tradition. We invite you to share this tradition by inviting someone new to SAGE to one of our many SAGE-sponsored events. Share the camaraderie and support found among SAGE members with others.

When you invite someone new to any SAGE-sponsored events and that friend joins SAGE, he or she will become a SAGE of South Florida member for the reduced fee of \$25 for their first year of membership.

SAGE MEMBERS IN NEED

Please contact the **AADRC (Aging and Disability Resource Center)** @ **954.745.9779**. It is a one-stop center for information and referral services available to seniors and their care-givers in our community.

REMINDER FROM THE BOARD

IF YOU RESERVE A PLACE AT THE 'LUNCH & LEARN' AND YOU DO NOT ATTEND, YOU ARE STILL RESPONSIBLE TO SAGE FOR PAYMENT. WE MUST GIVE THE CATERER AS EXACT A COUNT AS POSSIBLE BASED ON YOUR RESERVATION. THE CATERER MUST BE PAID WHETHER OR NOT YOU SHOW UP.

12:30 PM, April 4, 2015 HERB SKOLNICK COMMUNITY CENTER

800 S.W. 36th Avenue, Pompano Beach, FL
RESERVATIONS REQUIRED!!!!!!

Members with reservations: \$14.00

Guests: \$19.00

Everyone Pays at the Door.

Doors Open at 12:00PM

If you arrive early, please make yourself comfortable in the lobby and meet and mingle with other SAGE members and their guests.

Reservations must be made by 12:30PM on the Thursday preceding the Luncheon, as the caterer must have the final count.

Please make reservations for the
April "Lunch & Learn"
with the SAGE office
@ 954.634.7219.

The April program will feature Bishop SF from the Pride Center. He will talk about Transgender issues.

MENU

April Lunch & Learn Menu

Romaine Salad
with Lemon Vinaigrette Dressing
Penne with Alfredo Sauce
Roasted Pork Loin
with sundried tomato sauce
Grilled Chicken available
Green Beans
Lemon Cake
Peach Tarte w/ Blueberries

PAID ADVERTISING - PAID ADVERTISING - PAID ADVERTISING -

Ft. Lauderdale PIZZA & PASTA

Serving Lunch & Dinner • Delivery after 4 pm



2100 East Oakland Park Blvd.
Ft. Lauderdale, FL 33306
One Block West of US 1

954-566-5226

www.fortlauderdalepizza.com



Peter Pan Diner
Open 24/7
RESTAURANT • BAKERY • LOUNGE

- COCKTAILS • CATERING •
- BANQUET FACILITIES •
- BAKERY ON PREMISES •

1216 E. OAKLAND PARK BLVD., FORT LAUDERDALE, FL 33334

954.565.7177

WWW.PETERPANDINER.COM

OVER 100 SUGAR FREE ITEMS
CHILDHOOD MEMORIES OF SWEETS
Toys, Sodas, Groceries 'n MORE
OVER 2000 Greeting Cards
SAME-SEX Wedding Cards
& Cake Toppers

10% DISCOUNT
WHEN YOU SHOW YOUR
SAGE CARD ON ANY
PURCHASE \$10.00 & OVER

2205 WILTON DRIVE
FORT LAUDERDALE
954-564-2987

facebook
twitter
LinkedIn
yelp

TOTHEMOONMARKETPLACE.COM

THE DAILY SAGE

MONDAYS

Every Monday...11am

*SAGE on the Border Co-ed/Alternatives
Volen Center in Boca Raton*

Every Third Monday...4:00pm

*See You at the Movies (Dinner to follow)
Pride Center*

Every Fourth Monday...5:30pm

*Men's Singles Dinner Out
Tropics*

TUESDAYS

Second Tuesday...??1pm

*Camera Club
Photo Opt*

WEDNESDAYS

Every Wednesday...1pm

*Men's Drop-In
Pride Center*

Every Wednesday...4pm

*Computer Club
Pride Center*

THURSDAYS

Second Thursday... noon:

*Women's Luncheon
Golden Coral in Tamarac*

Third Thursday...1pm

*Co-Ed Discussion Group
Pride Center, Room 208*

SATURDAYS

First Saturday...9:30am

*SAGE Board Meeting
Skolnick Center in Palm Aire*

First Saturday...12:30pm

*Lunch & Learn
Skolnick Center in Palm Aire*

Second Saturday...11am

*Book Club
Stonewall Library*

Fourth Saturday...1pm

*Camera Club
Pride Center*

SAGE COMPUTER CLUB

KEN GOODMAN



Do you want to catchup to your grandkids or sons and daughters? Come and enjoy learning about technology at the SAGE Computer Club. Would you like to feel more confident when using your computer, smart phone, tablet, or any other type of internet connected device? You should come and join us at the SAGE Computer Club. Bring your questions and problems and we will try to help you solve them. No question is too basic, we want everybody to learn and become better at using their devices. If you have a laptop computer, smartphone or tablet you can bring it to help us resolve your problem. We discuss the Windows, OS/X, Android, Windows 8.1 Phone and Apple iOS operating systems.

The Computer Club meets every Wednesday at 4 pm for at least an hour. Any new Computer related news is discussed, followed by the issues you wish to bring or a current topic of interest. Bring your questions and problems and we will try to help.

Also, if you wish, you can join us for dinner after the meeting at a nearby reasonable gay friendly restaurant.

The meetings of the SAGE Computer Club are held at the **Pride Center facility on Dixie Highway** Building A in the AV Room 206 on **Wednesdays** at 4PM. Call for directions if you need them at 954-634-7219 or the Pride Center's switchboard at 954-463-9005.

SAGE WOMEN @ GOLDEN CORRAL

NANCY DRENNEN



Where: Golden Corral.

7401 Commercial Blvd. Tamarac

Phone: 954.623.6400

When: Noon, 2nd Thursday of every month.

Call Nancy @ 954.741.1540 for reservations.

This is a SAGE sponsored activity.

SAGE BOOK CLUB

PHILIP COLLIER & ALAN DORFMAN

An old Tibetan proverb has it that on every journey the traveler must die once - the person who arrives back home should not be the person who left. With Australian author Benjamin Law as our guide to evolving changes in gay life across a span of 7 Asian countries, please join the SAGE book group on April 11 as it discusses **Gaysia** from 11 AM to noon at the Stonewall Library, 1300 E. Sunrise Blvd., Ft. Lauderdale. All readers are welcome - no reservation is required. For information contact Philip (443) 614-7135 or Alan (561) 499-2913

SAGE MEN'S DINNER OUT

JOHN CHANDLER



Are you a man who enjoys the company of other men? If you do then we have an evening for you. Every 4th Monday of every month, SAGE Board member, John Chandler, co-ordinates cocktails at Tropics and dinner at a restaurant in Wilton Manors that the group chooses.

Cocktails, lively conversation and meeting and making friends begin at 5:30. At 6:30 the party moves to the restaurant that the group chose where we enjoy a terrific dinner.

We usually wear red shirts so we can all recognize each other. Our next dinner will be held on Monday, April 27, 2015.

For reservations please contact **John Chandler @ 954.933.2963** or e-mail @ stonyman4u@aol.com and don't forget to wear your red shirt!

This is a SAGE sponsored activity.

NOTES FROM THE SAGE CO-ED DISCUSSION GROUP

The monthly SAGE Co-Ed Discussion Group meets on the third Thursday of the month and we welcome your participation to join us. As mature members of the LGBT community, this group is targeted for women and men. We share our insights and experiences in a cordial atmosphere on general topics related to life, work, relationships, "memory lane", LGBT issues, and other common experiences.

The people in this group are nice! A co-ed group offers a unique perspective from both genders. We need more LGBT women in the group to ensure that dynamic of a co-ed experience.

There is no fee for participation. If you are a good-natured individual who would enjoy meeting on a regular basis with

others in our age group then please consider coming to check us out.


Although it takes time to get to know others, the group experience such as this over a period of time allows all of us to get to know each other. You will like what you see and will appreciate the insights of others. Fellow group members will also get to know and appreciate your input and contributions.

Our meeting date for April is April 16, 2015 and the meeting begins at 1 pm. Mark your calendars and plan on join us at the Pride Center in Room B208.

Frank Piasecki

SAGE CAMERA CLUB MARCH 2015

The SAGE Camera Club Photo Op for April will be held on Tuesday, April 14th, 2015, at 1:00PM at the Pride Center. We will have discussed this at the March Monthly Meeting, and I'll be sending reminders to all of you. Our April Monthly Meeting will be held on Saturday, April 25th, at 1:00PM, also at the Pride Center. Bring some more of your great pictures, and we'll have "show-&-tell". Let's all try to go "outside of the box" for this month's pictures. See you all on April 14th...




THE LAW OFFICES OF
ROBIN L. BODIFORD, P.A.

Robin L. Bodiford
ATTORNEY AT LAW
WILLS • TRUSTS • BANKRUPTCY

2550 N. FEDERAL HWY • SUITE 20
FORT LAUDERDALE, FL 33305
PH 954-630-2707 • CELL 954-802-1441
email: rbodiford@aol.com • www.LAWROBIN.com

AUTHOR, "Fresh Start Bankruptcy" &
"A Simplified Guide to Creating a Personal Will" (John Wiley & Sons, 2003)



**Helping Retirees, Seniors and their Families
Change or Adapt their Living Environments to
be Safe, Barrier Free, and Convenient**

- ◆ Aging In Place Services
- ◆ Senior Move Management Services
- ◆ Personal Information Services
- ◆ Organization Services
- ◆ Digitization Services

Ask about renowned author, Wanda Gozdz book,
Sensible Smart Tips for Living in Your ForeverHome™

Licensed ~ Insured



GOLDEN AGE LIVING
Organizing Lives One Person at a Time

wegcaps@att.net
888-607-4650 ◆ www.goldenageliving.com



SAGE ON THE BORDER/ALTERNATIVES **CAROLINE LETO/FRANK PIASECKI**

Where: the Volen Center
1515 West Palmetto Rd., Boca Raton
When: Every Monday from 11AM to 1PM.

Welcome everyone, no reservation required.

Please call the Volen Center to see if it is open as the Center closes for holidays. 561-395-8920

This is a SAGE sponsored activity.

SAGE IS NOW ON FACEBOOK!
SEE OUR PAGE AT:

<https://www.facebook.com/SageOfSouthFloridaInc?ref=aymt>
homepage panel



SAGE SOCIAL-LITES FOR APRIL 2015

This is a SAGE sponsored event.
SAGE IS NOW ON FACEBOOK!
SEE OUR PAGE AT:

[https://www.facebook.com/
SageOfSouthFloridaInc?ref=aymt_homepage_panel](https://www.facebook.com/SageOfSouthFloridaInc?ref=aymt_homepage_panel)

Well, everyone, we have finally made it through ALL the holidays and SAGE Special Events, and now it's time to kick back and enjoy our beautiful South Florida. On the calendar for April, we only have the Meet-Up at Flip Flops Café, on the Intracoastal next to Shooters. This should be a great time to really relax, enjoy the views, and have fabulous food and drinks. See the attached flyer in this month's Newsletter. The event will be held on Tuesday, April 21st, from 5:00PM until whenever. Hope to see a bunch of you there.

This is my last column as the chairman of the SAGE Social Committee. Someone else is taking my place as chairman, but I will still be on the Social Committee, as well as attending most of the events. It has been my absolute pleasure to have served the members of SAGE in this capacity for the past year, and I look forward to helping in planning MORE great events for our great organization. So... it's really not goodbye, but "I'll see you at the next event..."



NOTES FROM THE MEN'S DROP-IN

Ron Catena
This is a SAGE sponsored activity

I am happy and proud! What a season! The improved SAGE Men's Drop In group is operating at full capacity. Standing room only?

Well, we do have enough chairs for everyone to sit comfortably and enjoy interesting and fun conversation, with lots of good humor and witty comments from those in attendance. We are truly blessed with so many longtime and loyal attendees with a very impressive group of new guys who quickly become "regulars" and then thankfully invite other guys to join us for a fun filled informative couple of hours.

We do our best to keep this informal program interesting and we do invite a guest speaker from time to time recently Dr. Eirik Saethre, an anthropologist and professor at the University of Hawaii, came to speak to the group about his recent work amongst the poor in South Africa. There he worked on an AIDS education project. As always, his talk was interesting and informative and very well received. He is very passionate about his work and is a dynamic speaker. His presentation was followed by a robust

question and answer period. Thanks to Carl Barton for arranging the audio visual equipment and to Sonny Miller for setting up the room. We had outstanding attendance! We will invite him back. Eirik is the son of drop in regular Lee Saethre who worked with me on scheduling Eirik's presentation.

After several years of being a SAGE Board member and two years as SAGE Vice President, I have enjoyed my work so much that I have decided to run for reelection to the post of Vice President. My enthusiasm for the organization remains high and I am bursting with new ideas. I look forward to working with the Board of Directors and a new President. (Our current President is stepping down at the end of his term.) My goal will continue to recruit new members increase member participation at SAGE Social Events introduce some new programs and improve popular in place programs, as I have done with the Men's Drop In. We serve a diverse population of LGBT seniors and must always take into account the needs and desires of our members. Our leadership is made of all volunteers. We have no paid staff to fulfill our commitments

Our Social Committee will strive to present events that we hope will appeal to everyone always being mindful of cost. We are open to suggestions and ideas and invite you to "speak up". Let us know what you're thinking. You do not have to be a member of the Board of Directors to serve on a SAGE committee. I am sure that the new President will be putting out a call for volunteers. Answer the call!!! Participate and help us improve our organization.

The Men's Drop In meets everyone Wednesday at the Pride Center from 1 to 3 pm. Stop by and see what we're all about.

PAID ADVERTISING - PAID ADVERTISING - PAID ADVERTISING -



PRIMAVERA Restaurant

Fine Italian Cuisine since 1985

AWARD WINNING WINE LIST

PRIVATE BANQUET ROOMS

Located in Primavera Plaza

830 East Oakland Park Blvd.

Fort Lauderdale, FL 33334

(954) 564-6363 • www.TRUEITALIAN.COM

SAGE SPOTLIGHT

PRIME TIMERS & SPA SOBA GET-TOGETHER



SAGE SPOTLIGHT

FEBRUARY 2015 VALENTINES PARTY



SAGE of South Florida
Financial Report for Fiscal Year ending December 31, 2014

	2014 Budget	YTD Actual	Variance Over (Under) Budget
REVENUE:			
Advertising (1)	7000	1223	(5777)
Contributions (2)	9,000	10,400	1,400
Membership Dues	12,100	10,200	(1,900)
Interest Income (3)	200	194	(6)
Raffle Income (4)	600	623	23
Miscellaneous Revenue	100	97	(3)
TOTAL REVENUE	29,000	22,737	(6,263)
EXPENSES:			
Insurance	1,600	1,546	(54)
Newsletter (5)	11,500	11,785	285
Office Supplies (6)	2,500	3,474	974
Postage (7)	2,900	2,432	(468)
Rent (8)	8,600	7,435	(1,165)
Community Activities (9)	1,000	3,192	2,192
Miscellaneous Expense	300	89	(211)
Special Events Costs (10)	600	1,223	623
TOTAL EXPENSE	29,000	31,176	2,176
NET REVENUE/(EXPENSE)		(8,439)	

NOTES TO FINANCIALS:

- (1) Advertising revenue is used to offset monthly newsletter expenses.
- (2) Contributions received from members for our yearly Give From the Heart Campaign.
- (3) Interest income derived from a Certificate of Deposit with Bank United.
- (4) Raffle income is from a 50/50 raffle held at monthly Lunch & Learn.
- (5) Monthly newsletter costs include printing and envelopes but are offset by advertising revenue.
- (6) Office supplies include office operation, telephone, computer software and website expense.
- (7) Postage includes costs for membership mailing and monthly newsletter.
- (8) Rental costs are for the office space that SAGE maintains at the Pride Center.
- (9) Community activities includes Pridefest, Smartride Pitstop 4 sponsorship and events at the Pride Center.
- (10) SAGE Social & Educational activities generated revenue of \$18,772 and expenses of \$19,945 resulting in a Special Event loss of \$1,223.

VOLUNTEER(S) NEEDED FOR SAGE MOVIE

If we want to continue “SEE YOU at the MOVIES” as a MONTHLY ACTIVITY, we need someone dependable to step forward to show a movie of His or Her Choosing the Months that Carl M Galli is not screening one. (May, July, September, November, January, March are all OPEN.)

It can be a DVD (not Blu-ray) from your own library, a rental (from Red Box or Netflix or the Public or Stone-Wall Library, etc.), or from Ken’s home Library.

Generally speaking, it should have some connection with the LGBT Community (Actors, Directors, Writers, Characters,

Story-Line, Plot, Etc.) or be a “Classic”.

All you have to do is **Choose It, write a Short Article for the Newsletter, and be ready to show it on the Third Monday of a Month.**

As Ann highlighted, in our March issue, SAGE of South Florida is an All-Volunteer Organization. Without the necessary volunteers, we may have to curtail or even end some of our activities. Let’s not let our Movie be the first victim.

If you’re interested, please contact the SAGE Office.

IN MEMORIAM

SAGE mourns the deaths of the following members:

HEATHER BROOKS

DONALD MARSHALL

ROBERT "REBA" REBERNISEK

CORRECTIONS

The author of the front page article in the February 2015 newsletter was written by Carl M. Galli not Ann Smith and the front page article in the March 2015 newsletter was written by John Harris not Ann Smith.

SAGE IS NOW ON FACEBOOK! SEE OUR PAGE AT:

https://www.facebook.com/SageOfSouthFloridaInc?ref=aymt_homepage_panel

PAID ADVERTISING - PAID ADVERTISING - PAID ADVERTISING - PAID ADVERTISING - PAID ADVERTISING

Household Pests
•
Lawn Spraying
•
Rodent Control
•
Termites
•
Bed Bugs
•
RESIDENTIAL
COMMERCIAL
•
Licensed & Insured

(954) 920-BUGS (2847)



"Hello Aloha... Goodbye Bugs"

The Parish of Sts. Francis and Clare

*A Progressive Community in the Catholic Tradition
Where We Welcome and Appreciate Diversity!*



Mass Times:

Wednesday 7:00 PM

Saturday 5:00 PM • Sunday 10:30 AM

101 N.E. 3rd St.
Ft. Lauderdale, FL 33301

954.731.8173

www.stsfrancisandclare.org

AFFORDABLE HOME HEALTH CARE

LGBT
HOME CARE FOR
LGBT
SENIORS



EMERALD ELITE
SENIOR HOME CARE

CALL ERNEST OLIVAS
954-629-1377

Ernest@EmeraldEliteHomeHealth.com

www.EmeraldEliteHomeHealth.com

CRUISE PLANNERS
Four Local and Online Specialists

Phone: (704) 322-3677
Toll Free: (855) 280-5342
(704) 763-9865
emuhliten@cruiseplanners.com
www.ericdavidtravel.com
Charlotte, North Carolina

Independently Owned & Operated

Eric Muhliten
Franchise Owner



BOVÉ DENTAL

General, Cosmetic & Restorative Dentistry

ALFRED G. BOVÉ, DMD

2500 E. Oakland Park Blvd.
Ft. Lauderdale, FL 33306

954-564-0181 Fax: 954-564-0182

Email: Info@BoveDentistry.com
www.BoveDentistry.com

SEE YOU AT THE MOVIES

Carl M. Galli



John Gearrity



Our **April 20th** selection is one in honor of April Fools. **"Lucky # Slevin"** is an intricately plotted 2006 film noir plumbing the depths of gangster warfare in New York City. It is funny and cruel at the same time. And there is a gay sub-plot and a surprise ending.

It was directed by Scottish filmmaker **Paul McGuigan** (of "Wicker Park" fame) who won the Milano International Film Festival (MIFF) Best Film and Audience Awards. The film was written by **Jason Smilovic**.

Starring **Josh Hartnett** (now on Showtime's "Penny Dreadful") and his towel, as a seemingly naïve pawn in a war between rival mobsters the Rabbi (**Sir Ben Kingsley**) and the Boss (**Morgan Freeman**), it is violent and a bit confusing at times. Ultimately fast paced and entertaining through the end.

Bruce Willis, Stanley Tucci and Lucy Liu co-star, but it is Hartnett's movie all the way. He tied for Best Actor (with Peter Falk) at the same MIFF mentioned above.

We cannot say too much about the plot without spoiling the viewing experience. Suffice to say that if you liked "The Usual Suspects" or if you like Josh Hartnett or if you like twisty-turny films or Guy Ritchie's movies, then you will like this one. If you don't, then maybe not. **And if violence (even graphic-novel style) bothers you, then definitely not.**

From IMDb.com: "Despite a reasonably confusing series of opening events, Slevin is essentially a straight forward, neat black comedy of errors (mistaken identity for one). The dialogue is at times razor sharp and the action is well shot. **The body count climbs steadily as the movie progresses at a cracking pace that never becomes dull.** Slevin is thematically similar to a few other choice stories, but like Kiss Kiss Bang Bang - Slevin should be enjoyed more for the ride and the audience should try not to guess ahead of the plot and let it unfold naturally. There will still be some surprises appearing even for the most avid film fans but like so many thrillers Slevin could be ruined from word of mouth....this little gem...doesn't outstay a welcome."

Rated R (for bloody violence, sexual situations, and language) "Lucky # Slevin" runs 110 minutes. We will screen it with subtitles on **Monday, April 20th, in Room 204 of the Pride Center.** As always, dinner will follow.



PAID ADVERTISING - PAID ADVERTISING - PAID ADVERTISING



WYNMOOR COUNTRY CLUB

Hi, my name is Bonnie Berg. Please join me for a tour of our amazing Country Club Community in Coconut Creek where we offer...

- * 1 or 2 bdrm condos starting at \$50k.
- * **Incredible 24/7 lifestyle including:**
 - 19 pools, golf, tennis, fully equipped gym, and dozens of exercise classes.
- * **State of the Art theater facilities offering movies, concerts, and live entertainment.**
- * **Over 100 clubs for every interest including crafters, book lovers, gardeners, sports fans and more.**

FOR A TOUR APPOINTMENT CALL BONNIE BERG:
PHONE: 954-969-9248
CELL PHONE: 305-978-2374
BBERG@WYNMOORVILLAGE.COM

SAGE BIRTHDAYS FOR THIS MONTH

The SAGE Board would like to acknowledge the following members whose birthdays are this month as well as any other member whose birthday that we don't have.
If, when you renewed your membership or became a new member you did not give us your birthday, you may call the office and leave the information at 954.634.7219 or e-mail us @ sagesofl@gmail.com.

First Name	Last Name	Birthday			
CARLA	EISENBERG	Apr-01	LINDA	ARECTOS	Apr-11
LEO	VIOLETTE	Apr-01	CHARLES R	BUCHANAN JR	Apr-12
RONALD	SEIDLE	Apr-02	THOMAS	MOTZ	Apr-12
TED	SINGER	Apr-02	JULIA	LANDIS	Apr-13
BRUCE T	WILLIAMS	Apr-02	ROBERT J	STASTNY	Apr-13
RAFAEL	REYES	Apr-03	ELIOT H	COHEN	Apr-14
EDWARD	KUNOFSKY	Apr-04	GIBSON BELL "SANDY"	SMITH	Apr-15
RICK	OVERTON	Apr-05	JOHN	CHANDLER	Apr-16
DAVID E	POTTER	Apr-05	JOSE	SOLERNOU	Apr-17
JAMES V	FICKE	Apr-06	FRANK W.	CAVANAUGH	Apr-20
ERNIE	BLAKENSHIP	Apr-07	BILL	FARRINGTON	Apr-21
MARTIN	HOROWITZ	Apr-08	JOHN F	GREGORY III	Apr-21
JEAN	JOHNSON	Apr-09	MICHAEL	KELLER	Apr-21
SHARON	MC LEAN	Apr-10	ELAINE "MICKI"	MURPHY	Apr-21
			TOM "TOMCAT"	PENCE	Apr-23
			JUDY	ROGERS	Apr-23
			CAROLYN	CIANELA	Apr-25
			FRED A	VEGA	Apr-28
			SHAWN	FANSHIER	Apr-29
			JOHN G	HARRIS	Apr-30

New Members

First Name	Last Name	Date Joined
LOIS W	EDGINGTON	Feb-15
TERRY	FEATHERS	Feb-15
HARVEY	HOFFENBERG	Feb-15
ANDREW	PLIVKA	Feb-15
DEAN A.	ROBINSON	Feb-15
REV PATRICK	ROGERS	Feb-15

5 Year Anniversaries

First Name	Last Name	Date Joined
JOHN	BEHAN	Feb-10
DOMINIC	DESANTIS	Feb-10

10 Year Anniversaries

JIM	ANDERSON	Feb-05
EMMA L.	HINMAN	Feb-05
SHARON	KNOWLES	Feb-05
PEGGY	WATSON	Feb-05

15 Year Anniversaries

RICHARD	SCHWARZ	Feb-00
---------	---------	--------

If you have had an anniversary with SAGE for either 5, 10 or 15 years and you have not received your pin, please call the SAGE office (954.634.7219) to make an appointment to pick it up or they will be available at the Annual Meeting.

SAGE IS NOW ON FACEBOOK!

SEE OUR PAGE AT:

https://www.facebook.com/SageOfSouthFloridaInc?ref=aymt_homepage_panel

SAGE WANTS YOU!!!

Please Join or Renew Today.

NAME: _____ Birthday: Month _____ /Day _____

ADDRESS: _____

CITY: _____ STATE: _____ ZIP: _____

TELEPHONE: _____ CELL: _____

E-MAIL: _____ Would you like to receive the SAGE newsletter by email? circle one: Yes No

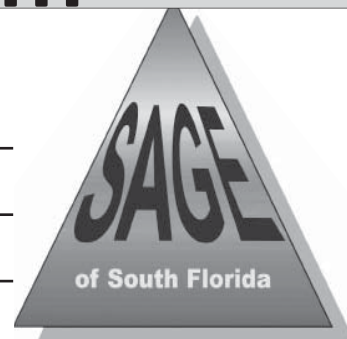
COMMITTEE INTEREST: _____

Would you care to make a tax-deductible contribution to SAGE included with your dues? Yes

CIRCLE ONE: RENEWAL NEW MEMBER

Please enclose a check in the amount of \$35.00 made payable to SAGE OF SOUTH FLORIDA

Mail To: SAGE of South Florida, PO Box 70516, Oakland Park, FL 33307



MEMBERSHIP APPLICATION

SENIOR ACTION IN A GAY ENVIRONMENT



ANDREWS DINER
"A Family Restaurant"
 Hosts: Angelo, Gerri & Marla
 2980 N. Andrews Avenue
 Fort Lauderdale, FL 33311
 954.563.3555

Hours
 Monday, Tuesday & Wednesday 7 AM - 3 PM
 Thursday & Friday 7 AM - 8 PM
 Saturday 7 AM - 3 PM
 Sunday 7 AM - 12 PM



KAREN CARROLL
 JULIE SLATER
 ED FIORENZA
 MARCUS ROWE

EYE EXAMS
 & CONTACT LENS FITTINGS
 BY INDEPENDENT DOCTOR
 OF OPTOMETRY

2228 WILTON DRIVE
 WILTON MANORS, FL 33305
 954.567.3937
 CHICOPTIQUE@AOL.COM

Show Us Your SAGE card and get a 20% discount!




MANDARIN, SZECHUN & CANTONESE FAVORITES!
Quality Food at Affordable Prices
 664 N Federal Hwy., Ft Lauderdale, FL 33304
 954-527-0228

CALL FOR A FREE CONSULTATION


CONFUSED ABOUT THE CHANGES IN MEDICARE?

Medicare Specialist offering:
 Low Cost Medicare Supplements
 Part D Prescription Drug Plans
 No Cost Medicare Advantage Plans

Very Affordable Rates On:
 Long Term and Home Care Coverage
 Life and Disability Insurance
 Guaranteed Income for Life



Call Gary Kempler at
 954-328-5418
 or send an email to
 garykempler@ffig.com





30 Minute Men's Health Screening

Good for the body. Good for the mind.

Screening includes:

- Blood pressure and pulse oximetry
- Complete blood count
- Complete metabolic profile
- Lipid profile
- Prostate-specific antigen (PSA)
- Testosterone
- Body Mass Index (BMI)
- Vitamin D
- Thyroid (TT3, T4 and TSH)
- Diabetes (A1c)

Monday to Friday, 7am - 5:30pm
Saturday, 8am - 11am. Walk-ins welcome.

\$75 flat fee. Screening may be covered by insurance.

Call **954.279.7946** to speak to the Men's Health Navigator.

Or email **MensHealth@BrowardHealth.org**.

He will assist you with alternative times, insurance verification and any other questions you may have about the screening.

**Fast, convenient, mobile health
screenings on the new Man Van.**



BROWARD HEALTH
IMPERIAL POINT

6401 N Federal Highway,
Fort Lauderdale, FL 33308

**Visit BrowardHealth.org/BHIPmen to see a
list of upcoming events and catch the
Man Van out in the community.**

Join SAGE for a Pre-Memorial Day Dinner Special at



2428 E. Commercial Blvd., Ft. Lauderdale, FL 33308

(954) 772-2850

SUNDAY

MAY 17, 2015

4:30 - 5:30pm Cash Bar

5:30pm Dinner Service Begins

CHOICE OF SALAD BAR OR CAESAR SALAD OR SOUP with Fresh-Baked Breads

Entrée Choices (One of:)

Top Sirloin

BLACK ANGUS BEEF, NATURALLY LEAN, WITH GREAT FLAVOR

Tilapia

BAKED OR CAJUN SPICED

Grilled Pork Chop

CENTER CUT, WITH Chuck's OWN HOUSE BLEND SEASONING

Chicken Teriyaki

BREAST OF CHICKEN WITH Chuck's OWN HOMEMADE TERIYAKI SAUCE

Sir Chuck

GROUND TOP SIRLOIN STEAK WITH SAUTÉED MUSHROOMS AND DIANE SAUCE

Beef Kebob

GRILLED, TERIYAKI, OR BLACKENED WITH SIDE OF SAUTÉED MUSHROOMS

ALL Entrées INCLUDE CHOICE OF BAKED POTATO, BAKED SWEET POTATO, FRENCH FRIES,

RICE PILAF, OR STEAMED VEGETABLES

Included Beverage: Coffee OR Iced Tea OR Tea OR Soda (ONLY ONE CHOICE Per Person)

Included Dessert: Key Lime Pie OR Ice Cream (ONLY ONE CHOICE per Person)

DINE IN ONLY - TAKE OUT NOT AVAILABLE

PRICING: \$24 Each Person (Inclusive of any tax and gratuity) NO REFUNDS

Closing Date for Reservations: No Later Than 1pm Wednesday, May 6, 2015

SAGE Pre-Memorial Day Dinner at Chuck's Steak House

_____ Meal(s) for MYSELF & GUEST(S) at \$24 Each My Phone Number: _____

NAME: _____ Write-in Entrée: _____

NAME: _____ Write-in Entrée: _____

NAME: _____ Write-in Entrée: _____

NAME: _____ Write-in Entrée: _____

Mail with Payment to: SAGE, PO Box 70516, Oakland Park, FL 33307

Questions? Call SAGE: 954-634-7219

A SAGE-SPONSORED ACTIVITY



***Please* GIVE FROM YOUR HEART**

On this upcoming February won't you give from your heart?

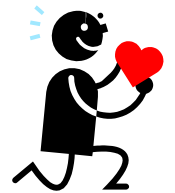
You all belong to SAGE, the premier, most prestigious, senior non-profit LGBT organization in South Florida. All our activities are designed to break even at best, and SEVERAL have to be subsidized by our Organization.

Please help us to continue in our 20th year and beyond serving you and your needs, as well as continuing our community outreach efforts within both the LGBT and the mainstream communities.

On this St. Valentine's Day won't you please give from your heart?

YOUR TAX DEDUCTIBLE contribution*, small or large, will help assure the financial health and continuing success of SAGE of South Florida.

Thank you all for your generous hearts!!!!



SAGE'S 2015 GIVE FROM THE HEART CAMPAIGN

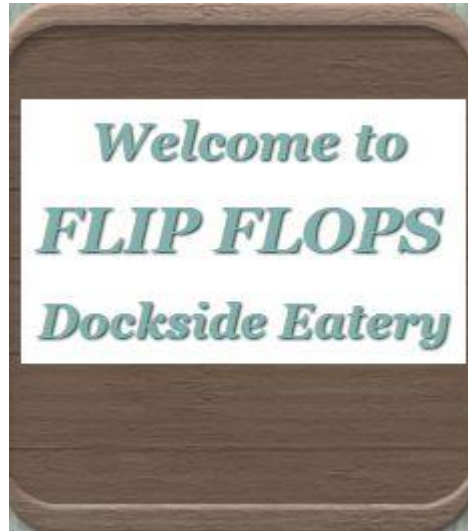
Name: _____ enclosed is a check for \$_____ as my donation to SAGE's 2015 Give From the Heart Valentine's Campaign.

***As a 501©3 Nonprofit, any donations SAGE receives are tax deductible as allowed by IRS laws and regulations.**

**Mail your donation to: SAGE at: P.O. BOX 70516, Oakland Park, FL 33307
Questions? Call the SAGE Office at: (954) 634-7219 A SAGE-Sponsored Activity
*Donors of \$500 or more will be listed as Archangels. All others will be listed as Angels in future issues of the Newsletter.***

All are SINCERELY and GRATEFULLY APPRECIATED!

**Join SAGE for a Meet-Up at Flip-Flops
On the Intracoastal Waterway
For A Menu-Priced Meal.**



3051 NE 32nd Avenue Ft. Lauderdale 33308
Off Oakland Park Blvd. after the Bridge
Telephone: (954) 567-1672

Tuesday

April 21, 2015

5:00 PM

Come enjoy a drink and/or snack/meal with your SAGE friends on the Intracoastal Waterway. The food is good and reasonable while the drinks are plentiful.



Questions? Call the SAGE Hot Line at: (954) 634-7219

A SAGE-Sponsored Activity

SAGE Activities Calendar

April 2015						
SUNDAY	MONDAY	TUESDAY	WEDNESDAY	THURSDAY	FRIDAY	SATURDAY
			1 1 PM Men's Drop In @ Pride Center 4 PM COMPUTER CLUB @ Pride Center	2	3 Good Friday First Day of Passover at sundown	4 12:30 PM LUNCH & LEARN Call Office @ (954) 634-7219 for reservation 9:30AM Board Meeting Pride Center 2PM Pippin @ Broward Center
5 Easter Sunday	6 11AM - 1PM SAGE On the Border Co-Ed / Alternatives @ Volen Center in Boca	7	8 1 PM Men's Drop In @ Pride Center 4 PM COMPUTER CLUB @ Pride Center	9 12PM SAGE Women's Lunch @ Golden Corral – Tamarac - call Nancy for info (954) 741-15407	10	11 11AM SAGE at Stonewall – Book Club @ Stonewall Library Call Alan Dorfman 561-499-2913 or Philip Collier 443-614-7135
12	13 11AM - 1PM SAGE On the Border Co-Ed / Alternatives @ Volen Center in Boca	14 1PM Camera Club Photo Op – Meet at Pride Center no later than 1PM	15 1 PM Men's Drop In @ Pride Center 4 PM COMPUTER CLUB @ Pride Center	16 1–3PM SAGE Co-Ed Discussion Group @ Pride Center Rm 207	17	18
19	20 1AM - 1PM SAGE On the Border Co-Ed / Alternatives @ Volen Center in Boca 4 PM SAGE Movie "Lucky Number Slevin" @ Pride Center - dinner TBD	21 5PM Meet-Up at FlipFlops on the Intracoastal	22 1 PM Men's Drop In @ Pride Center 4 PM COMPUTER CLUB @ Pride Center	23	24	25 1PM Camera Club @ Pride Center
26	27 11AM - 1PM SAGE On the Border Co-Ed / Alternatives @ Volen Center in Boca Men's DINNER Out @ TROPICS - call John C (954) 933-2963	28	29 1 PM Men's Drop In @ Pride Center 4 PM COMPUTER CLUB @ Pride Center	30		

SAVE the DATES:

April 4, 2015, Saturday	Pippin at the Broward Center
April 21, 2015, Tuesday	Meet-Up at Flip Flops Café the Intracoastal Waterway
May 9, 2015, Saturday	Anything Goes at the Broward Center SOLD OUT
May 17, 2015 Sunday	Dinner at Chuck's Steak House
June 16, 2015 Tuesday	Meet-Up at HoBo Grille at Rumours on the Drive

Community Events:

Ballet and Opera Group meets at Pride Center at 12:30 PM in room 204 on every other Sunday, in April on April 5th and 19th