

# The SAGE

The Newsletter of SAGE of South Florida

February 2015

## *SAGE HOLIVERSARY PARTY 2014*

*By Ann C. Smith*

The SAGE Holiversary Party was held on Sunday, December 14th, 2014 at the beautiful Westin Cypress Creek. We celebrated our group's 20th Anniversary AND 20th Holiday Party with a gala attended by 70 SAGE members and their guests. Sparkling entertainment was provided by Sissy and her new partner, along with Jan Hadden on the keyboard. Special guests included

Dining Room for the opening remarks. Short speeches were given by Mayor Resnick and Commissioner Peerman, and then the meal was served. After dinner, an appearance was made by Santa Claus and his elf, along with Rudolph the Red-Nosed Reindeer. Gifts were passed out to all of the guests and staff and entertainers. A wonderful time was had by everyone,



the Mayor of Wilton Manors, Gary Resnick, and Margate City Commissioner Le Peerman, along with their partners. Ron Catena, SAGE Vice-President, and former President Carl Galli were the Masters of Ceremonies. An hour on the outside deck, with cash bar, hors d'oeuvres, and delicious smoothies, along with musical interludes furnished by Miss Jan Hadden started the festivities, and then we all adjourned to the

and we are all looking forward to the next SAGE event, the Milestones Birthday Party in January.

The pictures include (left to right from left top), Jan Hadden performing on the Patio, the Reception desk ready to welcome guests, some of the "Girls" on the Patio, Santa with his Elf and Reindeer, some of the guests, and a couple dancing. More pictures are in the center of this newsletter.

## SAGE OF SOUTH FLORIDA, INC.

2040 N. Dixie Highway  
Wilton Manors, FL 33305

### Mailing Address:

SAGE of South Florida  
PO Box 70516  
Oakland Park, FL 33307

**Message Line:** 954.634.7219

**All Copy Deadline:** 8th of the Month

**Advertising Deadline:** 1st of the Month

**Email to Editor:** sagesofl@gmail.com attn: Editor

**Website:** www.sagewebsite.org

### OFFICERS

<b>President</b>	Kenneth Goodman
<b>Vice President</b>	Ron Catena
<b>Secretary</b>	Ann C. Smith
<b>Assistant Secretary</b>	Frank Piasecki
<b>Treasurer</b>	Inez Pasher
<b>Assistant Treasurer</b>	Allen Churchman

### BOARD MEMBERS AT LARGE

Carl Barton, John Chandler, John Harris, Dr. Martin Horowitz  
Gary "Lee" Lawson, Bruce Williams

### COMMITTEE ASSIGNMENTS

Advertising	Inez Pasher
Archivist	Hank Brooks
Book Club	Philip Collier (F)
	Alan Dorfman (F)
	Ken Goodman (F)
Computer Club	
Education	John Harris
Funding	John Chandler w/ Leo Glickstein
Lunch and Learn	Ann Smith (C)
Membership	Nancy Drennen
	Frank Piasecki
SAGE Co-Ed Discussion Group	John Harris (C)
SAGE Camera Club	Ron Catena (C)
SAGE Men's Drop-In	Carl Barton (F)
	John Chandler
Men's Singles	
Movie Club	Carl M. Galli (F)
	Ken Goodman
Newsletter Editor	John J. Harris
Associate Editor	Deric Bownds, Ph.D
Contributing Columnists	Carol Youngblood
	Bruce Williams
	Gary "Lee" Lawson
Office Manager	Carl Barton
Pride Center (SAC) Liaisons	Gary "Lee" Lawson
	Bruce Williams
	Ron Catena
Public Affairs	Ann Smith (C)
SAGE on the Border/Alternatives	Caroline Leto (F)
	Frank Piasecki (F)
SAGE Women	Nancy Drennen
	Jean Johnson (Advisory)
Social Activities	John G. Harris (CC)
	Carl M. Galli (Advisory)
Support	Leo Glickstein
	Godfrey Isaacs
	Inez Pasher
Volunteer Coordinators	Frank Cavanaugh
	Ken Moore
Newsletter Mailing & Lunch & Learn Set-Up	Les Oldenbusch (C)
Webmaster	Jay Brundage

*Appearance of an advertisement in this newsletter does not constitute endorsement by SAGE of South Florida, Inc. of the service being offered. We thank our advertisers for helping us to pay for printing this newsletter.*

### SAGE Editorial Policy

SAGE welcomes contributors to this newsletter. An author may request their entry to be "anonymous." However, the submission as received by SAGE must be accompanied by the full name and address of the author. Items will be published at our discretion. If we feel that we cannot publish a submission anonymously, we will contact the author. We reserve the right to edit items for size considerations, clarity or standards of decency.

## Cover Story: *Holiversary Party 2014...*

SAGE Mission Statement	1
SAGE Advertising Policy	1
SAGE Friendly Support	1
Reminder from the Board	2
SAGE Members in Need	2
Sharing SAGE with Others	2
SAGE Meetings	3
SAGE Co-Ed Discussion Group	4
SAGE Camera Club	4
Social-Lites	5
Mens Drop In	5
SAGE Spotlight	6, 7
Help Wanted	8
New Board Member	9
See You at the Movies	10
Milestones	11

## FRIENDLY SUPPORT PROGRAM

We'd like to think we are not merely fair weather friends, but people who really care about our SAGE family. If you know of any SAGE member who would appreciate a friendly call, is sick, in the hospital, recently lost a loved one, or just needs a note of cheer, please contact:

For women — Inez Pasher @ 954.563.2814.

For men — Leo Glickstein @ 954.935.5799.

This is a SAGE sponsored activity.

## SAGE MISSION STATEMENT

SAGE of South Florida is a non-profit organization for Senior action in a Gay Environment to enrich the lives of the GLBT senior community through membership inclusive of age, gender, race, nationality and religion. We believe this can be accomplished by sponsoring social alternatives To provide personal interaction, offering educational opportunities to deal with the special needs of aging, and promoting contact with the isolated and homebound persons of our community. SAGE is also an advocate for the concerns and needs of the senior community at large, providing referral information on community resources and promoting inter-generational communication in the GLBT community. SAGE was founded in 1994 as a Florida "not for profit." Corporation. (Federal Tax-Exempt status of 501(c)3 allowing tax-deductible donations.)

Our monthly newsletter is partially underwritten by advertising revenue. We have a written fee schedule for various sizes and number of months. An insert, instead of display advertising, is also available for business and organizations at a very reasonable rate. Contact the SAGE office at 954.634.7219 or email at sagesofl@gmail.com for more information. Appearance of an advertisement in this newsletter does not constitute endorsement by SAGE of South Florida, Inc. of the service being offered. We thank our advertisers for helping us pay for printing this newsletter. Do you have friends or family who own a business? Ask them to place an ad in THE SAGE. We appreciate our business supporters. As members, let's support them in return.



## SHARING SAGE WITH OTHERS

Reconnecting with old friends and meeting new acquaintances is a great part of the SAGE tradition. We invite you to share this tradition by inviting someone new to SAGE to one of our many SAGE-sponsored events. Share the camaraderie and support found among SAGE members with others.

When you invite someone new to any SAGE-sponsored events and that friend joins SAGE, he or she will become a SAGE of South Florida member for the reduced fee of \$25 for their first year of membership.

## SAGE MEMBERS IN NEED

Please contact the AADRC (Aging and Disability Resource Center) @ 954.745.9779. It is a one-stop center for information and referral services available to seniors and their care-givers in our community.

## REMINDER FROM THE BOARD

IF YOU RESERVE A PLACE AT THE 'LUNCH & LEARN' AND YOU DO NOT ATTEND, YOU ARE STILL RESPONSIBLE TO SAGE FOR PAYMENT. WE MUST GIVE THE CATERER AS EXACT A COUNT AS POSSIBLE BASED ON YOUR RESERVATION. THE CATERER MUST BE PAID WHETHER OR NOT YOU SHOW UP.

**12:30 PM, February 7, 2015**

### **HERB SKOLNICK COMMUNITY CENTER**

800 S.W. 36th Avenue, Pompano Beach, FL  
RESERVATIONS REQUIRED!!!!!!!!!!

Members with reservations: \$14.00 Guest:  
\$19.00

Everyone Pays at the Door.

Doors Open at 12:00PM

If you arrive early, please make yourself comfortable in the lobby and meet and mingle with other

SAGE members and their guests.

Reservations must be made by 12:30PM on the Thursday preceding the Luncheon, as the caterer must have the final count.

Please make reservations for the November "Lunch & Learn" with the SAGE office  
@ 954.634.7219.

## MENU

### **February Lunch & Learn Menu**

Romaine Salad

with Lemon Vinaigrette Dressing

Fusilli Primavera

sautéed with vegetables in a pink sauce

Salmon Fillet Oreganata

with Lemon Sauce

or Chicken Breast

Penna Lotta

PAID ADVERTISING - PAID ADVERTISING - PAID ADVERTISING -

## **Ft. Lauderdale PIZZA & PASTA**

Serving Lunch & Dinner • Delivery after 4 pm



2100 East Oakland Park Blvd.  
Ft. Lauderdale, FL 33306  
One Block West of US 1

**954-566-5226**

[www.lauderdalepizza.com](http://www.lauderdalepizza.com)



**Peter Pan Diner**  
**Open 24/7**  
RESTAURANT • BAKERY • LOUNGE

- COCKTAILS • CATERING •
- BANQUET FACILITIES •
- BAKERY ON PREMISES •

1216 E. OAKLAND PARK BLVD., FORT LAUDERDALE, FL 33334

**954.565.7177**

**WWW.PETERPANDINER.COM**

**OVER 100 SUGAR FREE ITEMS  
CHILDHOOD MEMORIES OF SWEETS**

Toys, Sodas, Groceries 'n MORE

**OVER 2000 Greeting Cards**

**SAME-SEX Wedding Cards  
& Cake Toppers**

**10% DISCOUNT**  
WHEN YOU SHOW YOUR  
SAGE CARD ON ANY  
PURCHASE \$10.00 & OVER

**2205 WILTON DRIVE  
FORT LAUDERDALE**

**954-564-2987**

facebook  
twitter  
LinkedIn  
yelp

[TOTHEMOONMARKETPLACE.COM](http://TOTHEMOONMARKETPLACE.COM)

## THE DAILY SAGE

### MONDAYS

**Every Monday...11am**

*SAGE on the Border Co-ed/Alternatives  
Volen Center in Boca Raton*

**Every Third Monday...4:00pm**

*See You at the Movies (Dinner to follow)  
Pride Center*

**Every Fourth Monday...5:30pm**

*Men's Singles Dinner  
Tropics*

### WEDNESDAYS

**Every Wednesday...1pm**

*Men's Drop-In  
Pride Center*

**Every Wednesday...4pm**

*Computer Club  
Pride Center*

### THURSDAYS

**Second Thursday... noon:**

*Women's Luncheon  
Golden Coral in Tamarac*

**Third Thursday...1pm**

*Co-Ed Discussion Group  
Pride Center, Room 208*

### SATURDAYS

**First Saturday...9:30am**

*SAGE Board Meeting  
Skolnick Center in Palm Aire*

**First Saturday...12:30pm**

*Lunch & Learn  
Skolnick Center in Palm Aire*

**Second Saturday...11am**

*Book Club  
Stonewall Library*

**Fourth Saturday...1pm**

*Camera Club  
Pride Center*

## SAGE COMPUTER CLUB

### KEN GOODMAN



Do you want to catchup to your grandkids or sons and daughters? Come and enjoy learning about technology at the SAGE Computer Club. Would you like to feel more confident when using your computer, smart phone, tablet, or any other type of internet connected device? You should come and join us at the SAGE Computer Club. Bring your questions and problems and we will try to help you solve them. No question is too basic, we want everybody to learn and become better at using their devices. If you have a laptop computer, smartphone or tablet you can bring it to help us resolve your problem. We discuss the Windows, OS/X, Android, Windows 8.1 Phone and Apple iOS operating systems.

The Computer Club meets every Wednesday at 4 pm for at least an hour. Any new Computer related news is discussed, followed by the issues you wish to bring or a current topic of interest. Bring your questions and problems and we will try to help.

Also, if you wish, you can join us for dinner after the meeting at a nearby reasonable gay friendly restaurant.

The meetings of the SAGE Computer Club are held at the **Pride Center facility on Dixie Highway** Building A in the AV Room 206 on **Wednesdays** at 4PM. Call for directions if you need them at 954-634-7219 or the Pride Center's switchboard at 954-463-9005.

## SAGE WOMEN @ GOLDEN CORRAL

### NANCY DRENNEN



**Where:** Golden Corral.

7401 Commercial Blvd. Tamarac

**Phone:** 954.623.6400

**When:** Noon, 2nd Thursday of every month.

**Call Nancy @ 954.741.1540 for reservations.**

*This is a SAGE sponsored activity.*

## SAGE BOOK CLUB

### PHILIP COLLIER & ALAN DORFMAN

The SAGE Book Discussion Group meets on the 2nd Saturday of each month at the Stonewall Library, 1300 E. Sunrise Blvd., Ft. Lauderdale, from 11 AM to noon. Our February 14, 2015 selection – EQUAL AFFECTIONS by David Leavitt – paints a picture that includes aspects of the ideals, ideologies and anxieties that continue to play an inherent role in contemporary American culture. All readers are welcome to join us – no reservation is required. For information contact Philip Collier 443-614-7135 or Alan Dorfman 561-499-2913.

## SAGE MEN'S SINGLES GROUP

### JOHN CHANDLER



Are you a single man who enjoys the company of other single men? If you do then we have an evening for you. Every 4th Monday of every month, SAGE Board member, John Chandler, co-ordinates cocktails and dinner at Tropics restaurant in Wilton Manors.

Cocktails, lively conversation and flirting begin at 5:30.

At 6:30 the party moves into the dining room where we enjoy a terrific dinner followed by complementary coffee. Prices are reasonable and the food is always wonderful (as is the company).

**We usually wear red shirts so we can all recognize each other.**

**Our next dinner will be held on Monday, February 23, 2015.**

For reservations please contact **John Chandler @ 954.933.2963** or e-mail @ [stonyman4u@aol.com](mailto:stonyman4u@aol.com) and don't forget to wear your red shirt!

*This is a SAGE sponsored activity.*

## NOTES FROM THE SAGE CO-ED DISCUSSION GROUP

The monthly SAGE Co-Ed Discussion Group meets on the third Thursday of the month and we welcome you to join us. As mature members of the LGBT community, this group is targeted for women and men. We share our insights and experiences in a cordial atmosphere on general topics related to life, work, relationships, "memory lane", LGBT issues, and other common experiences.

The people in this group are nice! A co-ed group offers a unique perspective from both genders. We need more LGBT women in the group to ensure that dynamic of a co-ed experience.

There is no fee for participation. If you are a good-natured individual who would enjoy meeting on a regular basis with oth-

ers in our age group then please consider coming to check us out.

Although it takes time to get to know others, the group experience such as this over a period of time allows all of us to get to know each other. You will like what you see and will appreciate the insights of others. Fellow group members will also get to know and appreciate your input and contributions.


Our meeting date for February is February 19, 2015 and the meeting begins at 1 pm. Mark your calendars and plan on joining us at the Pride Center in Room 208B.

Frank Piasecki

## NOTES FROM THE SAGE CAMERA CLUB

The December Photo Op was held on Tuesday, December 9th, and was attended by three members. We went to the Galleria Mall and took many pictures of the holiday trimmings and display windows. On the way back to the Pride Center, we stopped at the Christmas Palace, and took many more spectacular photos of the beautiful decorations. The Monthly Meeting was attended by six members, and we had a beautiful show-and-tell time of all the pictures we had recently taken.

The next Photo Op will be held at the Fort Lauderdale Orchid Show on Friday, January 23rd. Meet-up will be at the Pride Center at 1:00PM. The next Monthly Meeting will be held the next day, on Saturday, January 24th, at the Pride Center, Room 206, at 1:00PM.




**LAW ROBIN**  
THE LAW OFFICES OF  
ROBIN L. BODIFORD, P.A.

**Robin L. Bodiford**  
ATTORNEY AT LAW  
WILLS • TRUSTS • BANKRUPTCY

2550 N. FEDERAL HWY • SUITE 20  
FORT LAUDERDALE, FL 33305  
PH 954-630-2707 • CELL 954-802-1441  
email: rbodiford@aol.com • www.LAWROBIN.com

AUTHOR, "Fresh Start Bankruptcy" &  
"A Simplified Guide to Creating a Personal Will" (John Wiley & Sons, 2003)



**Helping Retirees, Seniors and their Families  
Change or Adapt their Living Environments to  
be Safe, Barrier Free, and Convenient**

- ◆ Aging In Place Services
- ◆ Senior Move Management Services
- ◆ Personal Information Services
- ◆ Organization Services
- ◆ Digitization Services

Ask about renowned author, Wanda Gogdz book,  
*Sensible Smart Tips for Living in Your ForeverHome™*

Licensed ~ Insured



**GOLDEN AGE LIVING**  
*Organizing Lives One Person at a Time*

wegcaps@att.net  
888-607-4650 ◆ www.goldenageliving.com



### **SAGE ON THE BORDER/ALTERNATIVES** **CAROLINE LETO/FRANK PIASECKI**

**Where:** the Volen Center  
1515 West Palmetto Rd., Boca Raton  
**When:** Every Monday from 11AM to 1PM.

**Welcome everyone, no reservation required.**

**Please call the Volen Center to see if it is open as the Center closes for holidays. 561-395-8920**

**This is a SAGE sponsored activity.**

**SAGE IS NOW ON FACEBOOK!**  
**SEE OUR PAGE AT:**

<https://www.facebook.com/SageOfSouthFloridaInc?ref=aymt>  
homepage panel



# SAGE SOCIAL-LITES



John G. Harris

*This is a SAGE sponsored event.*

## **SAGE IS NOW ON FACEBOOK!**

### **SEE OUR PAGE AT:**

[https://www.facebook.com/](https://www.facebook.com/SageOfSouthFloridaInc?ref=aymt_homepage_panel)

[SageOfSouthFloridaInc?ref=aymt\\_homepage\\_panel](https://www.facebook.com/SageOfSouthFloridaInc?ref=aymt_homepage_panel)

The SAGE Social Committee is proud to sponsor the next spectacular event, the Milestones Birthday Party on Sunday, January 18th, 2015, at the Pride Center. The event will once again be catered by the fabulous Primavera Restaurant and Chef Giacomo, and a wonderful time is sure to be had by all. We will be honoring all those members who celebrated Milestone Birthdays in 2014 ( 75th, 80th, 85th, and over 90th). Great food and a gorgeous birthday cake will be the highlights of this great annual event. Be sure to send in your reservations on the enclosed flyer. See you there!!

Our February event will be the annual Valentine's Day Party, held at the 5-star Primavera Restaurant. Date for the gala is Sunday, February 15th. Reservation form will be included with the February Newsletter.



## **NOTES FROM THE MEN'S DROP-IN**

Ron Catena

This is a SAGE sponsored activity

I always like the month of February because of Valentine's Day. I always have a mailbox full of Valentine's. Boxes of gourmet candy being delivered to my door by hunky delivery men, to say nothing of the endless bouquets of flowers arriving throughout the day. All of these Valentine's Day tributes being sent to me by guys from the Men's Drop In group and then I wake up from this lovely dream. They have not even sent me a Valentine's card from the Dollar Store. Not a bouquet of artificial flowers from Poverello's. Maybe, just maybe, some leftover candy from coffee and conversation but that is it. But I still love the guys dearly and I wish all of them a very happy Valentine's Day and once again I hope that Cupid comes through for them

Speaking of Valentine's Day the SAGE Social Committee is planning a lovely Valentine's Day party at Primavera restaurant. The food is always wonderful. This year the Social Committee planned a special menu of Italian dishes prepared lovingly by Chef Giacomo. Complete the reservation form

in your February newsletter and invite that special someone. If you would like come single and enjoy the company of your fellow SAGE members, but do come

The Men's Drop-In group is running at full steam with all of the snowbirds in attendance along with the year round regulars who keep the conversation fun, current and trendy. (Define trendy). We do have fun and a lot of laughs. This is a great way to keep our senior minds active. Remember as we get older socialization is very important to our wellbeing.

Don't miss this! On Sunday February 8, 2015 at 2pm Dr. Deric Bownds will give a piano recital at the Pride Center presented by SAGE of South Florida. Dr. Bownds is a retired professor from the University of Wisconsin and an accomplished pianist who has performed all over the world. This event is free and open to all. So please invite family, friends or neighbors, everyone is welcome. Besides this wonderful concert Deric's husband Len, a gourmet baker, will be providing homemade baked goods for all to enjoy with coffee at the conclusion of the concert where we will have a chance to socialize and chat with Deric.

The SAGE Men's Drop-In Group meets every Wednesday at 1pm at The Pride Center. Stop by ... you will receive a warm welcome.

PAID ADVERTISING - PAID ADVERTISING - PAID ADVERTISING -



## **PRIMAVERA Restaurant**

*Fine Italian Cuisine since 1985*

### **AWARD WINNING WINE LIST**

### **PRIVATE BANQUET ROOMS**

*Located in Primavera Plaza*

*830 East Oakland Park Blvd.*

*Fort Lauderdale, FL 33334*

**(954) 564-6363 • [www.TRUEITALIAN.COM](http://www.TRUEITALIAN.COM)**

# ***SAGE SPOTLIGHT***

## **HOLIVERSARY PARTY 2014**



*SAGE at the GAY Men's Chorus Dec. 2014, etc.*



1. Cake Donated by Fr. Lee - Served at C&C Pot Luck



# ***SAGE SPOTLIGHT***

## **HOLIVERSARY PARTY 2014**





# GIVE FROM THE HEART CAMPAIGN 2015

Once again, it's the season for love and sharing and giving. This article signals the opening of the SAGE 2015 "GIVE FROM THE HEART" Campaign. For the last several years, SAGE has asked you, its members, to contribute to the organization generously, to help offset the cost of numerous events, parties, outreaches, LGBT community support, and many other SAGE-sponsored activities. This Campaign is one of our two major fundraisers, the other being the December Tax Write Off fundraiser, which will start in December 2015. Our membership fees, which have not been raised in many years, and do not even cover the cost of printing the monthly newsletter, and these two fundraisers, are the only additional money that SAGE receives. As you know, SAGE underwrites the cost of numerous events to lower the price to you. We know that many of you are on a fixed income, and could not afford to attend these events, if we charged what we had to pay to break even.

Our Archangels and Angels have always come forward in these instances, and we invite the rest of you to contribute what you can to supplement SAGE and its many activities, that are only in place to make your life a little better. Fellowship, especially for us seniors, should be an important part of our lives. I know personally that I have made great friends since joining SAGE, and I'm sure most of you have too. I think that is what SAGE is all about—the opportunity to get out of our homes and meet, friend, and have fun with women and men our own age. I urge all of you to reflect on this, and contribute what you can to the SAGE 2015 "GIVE FROM THE HEART" Campaign. Thank you.

*Kenneth Goodman*  
*President, SAGE of South Florida, Inc.*

---

## HOW TO GET YOUR ANNIVERSARY PIN

If you have not gotten your 5, 10, or 15 year pin that is coming to you, please do one of the following:

- *Pick the pin up at the Annual Meeting.*
  - *If you are unable to attend this function, call the office to set up how you can get your pin.*
- 

## HELP WANTED... NEWSLETTER EDITOR

As you all know SAGE is a nonprofit organization that depends on volunteers to accomplish our mission. Our current Newsletter (The Sage) Editor has retired. If you have the skills to edit the SAGE newsletter and are willing to commit the time and effort, please send a synopsis of your qualifications and previous experience and we will get back to you as quickly as we can. Please send the information to the SAGE Office at P.O. Box 70516 Oakland Park, FL 33307 or email the information to [sagesofl@gmail.com](mailto:sagesofl@gmail.com) and [goodkenfl@gmail.com](mailto:goodkenfl@gmail.com). Thank you all for your willingness to help keep SAGE performing the functions that our community needs and deserves.

## LUNCH & LEARN SETUP AND BREAKDOWN VOLUNTEERS

Les is unable to do the lifting and setup and breakdown all by himself for the SAGE Lunch & Learn. He will need at least one or two other volunteers to help him. The job requires coming to the Lunch & Learn site early at the Skolnick Center. The volunteers will help Les unload his car and setup the room for the Lunch & Learn. After the meeting the volunteers will help Les repack the supplies and help load his car. If you would be able to help please contact the SAGE office.

Please send the information to the SAGE Office at P.O. Box 70516 Oakland Park, FL 33307 or email the information to [tosagesofl@gmail.com](mailto:tosagesofl@gmail.com) and [goodkenfl@gmail.com](mailto:goodkenfl@gmail.com). Once I receive your reply I will set up a time to meet and discuss the job with you. Thank you all for your willingness to help keep SAGE performing the functions that our community needs and deserves.

*Kenneth Goodman*  
*President, SAGE of South Florida, Inc.*

## NEW BOARD MEMBER - DR. MARTY HOROWITZ

Dr. Marty Horowitz a long time SAGE member and an active participant in SAGE programs has expressed an interest in serving on the Board. I have invited Dr. Marty to fill the vacancy left by the resignation of Gary Kempler from the SAGE Board of Directors. Dr. Marty has an impressive history of community activism and will be an excellent addition to our SAGE.

*Ken Goodman*

## SAGE IS NOW ON FACEBOOK! SEE OUR PAGE AT:

[https://www.facebook.com/SageOfSouthFloridaInc?ref=aymt\\_homepage\\_panel](https://www.facebook.com/SageOfSouthFloridaInc?ref=aymt_homepage_panel)

PAID ADVERTISING - PAID ADVERTISING - PAID ADVERTISING - PAID ADVERTISING - PAID ADVERTISING

Household Pests  
•  
Lawn Spraying  
•  
Rodent Control  
•  
Termites  
•  
Bed Bugs  
•  
RESIDENTIAL  
COMMERCIAL  
•  
Licensed & Insured

**(954) 920-BUGS (2847)**



"Hello Aloha... Goodbye Bugs"

### The Parish of Sts. Francis and Clare

*A Progressive Community in the Catholic Tradition  
Where We Welcome and Appreciate Diversity!*



Mass Times:  
Wednesday 7:00 PM  
Saturday 5:00 PM • Sunday 10:30 AM

101 N.E. 3rd St.  
Ft. Lauderdale, FL 33301

**954.731.8173**

[www.stsfrancisandclare.org](http://www.stsfrancisandclare.org)

## AFFORDABLE HOME HEALTH CARE

**LGBT  
HOME CARE FOR  
LGBT  
SENIORS**



**EMERALD ELITE**  
SENIOR HOME CARE

CALL ERNEST OLIVAS  
**954-629-1377**

[Ernest@EmeraldEliteHomeHealth.com](mailto:Ernest@EmeraldEliteHomeHealth.com)

[www.EmeraldEliteHomeHealth.com](http://www.EmeraldEliteHomeHealth.com)

### CRUISE PLANNERS

Phone: (704) 322-3677  
Toll Free: (855) 280-5342  
(704) 763-9865  
[emuhltnr@cruiseplanners.com](mailto:emuhltnr@cruiseplanners.com)  
[www.ericdavidtravel.com](http://www.ericdavidtravel.com)  
Charlotte, North Carolina

Independently Owned & Operated

**Eric Muhlitner**  
Franchise Owner



## BOVÉ DENTAL

*General, Cosmetic & Restorative Dentistry*

**ALFRED G. BOVÉ, DMD**

2500 E. Oakland Park Blvd.  
Ft. Lauderdale, FL 33306

954-564-0181 Fax: 954-564-0182

Email: [Info@BoveDentistry.com](mailto:Info@BoveDentistry.com)  
[www.BoveDentistry.com](http://www.BoveDentistry.com)



# See You at the Movies

Carl M. Galli



John Gearrity



Our February 16th Valentine's screening is of last year's marvelous romantic-dramedy "Love is Strange". Starring John Lithgow and Alfred Molina, it takes a look at a long-term relationship through the lens of a new gay marriage and the subsequent consequences once the Catholic Church becomes involved. One of the most universally lauded (but little seen) films of 2014, it shows the maturity and depth of gay love without the usual tropes of hustlers, drugs, suicide, etc.

Director Ira Sachs (with co-screenwriter Mauricio Zacharias) has fashioned a touching and humorous picture of a mature, committed relationship that should prove satisfying to our audience. With an almost unheard of approval rating of 94% on review aggregator Rotten Tomatoes, the Critics Consensus is: "Held aloft by remarkable performances from John Lithgow and Alfred Molina, Love Is Strange serves as a graceful tribute to the beauty of commitment in the face of adversity."

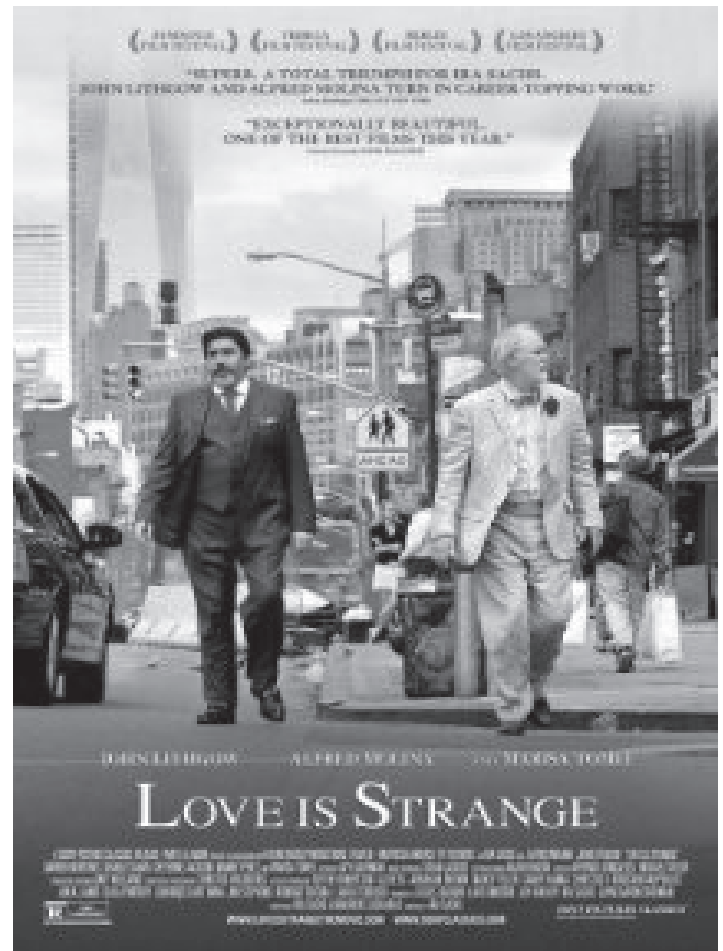
With a strong supporting cast (Cheyenne Jackson and Manny Perez; Darren Burrows and Marisa Tomei; and Charlie Tahan) this movie was initially thought to be short-listed for the 2015 Oscars. But bringing in only \$2.3 million at the U.S. box office, in the face of other very well-received critical and commercial successes, seems to have dampened its chances.

From RogerEbert.com: "The emotions unleashed by Love Is Strange are enormous. It is a patient and, ultimately, transcendent film." And from Rolling Stone: "In a summer of movie romances, Love Is Strange is the one that cuts deepest. Without the usual bull and spackled-on sentiment, it hits you like a shot in the heart ..."

It has been nominated for several awards, including the Independent Spirit and Gotham Awards, and has been on most film critics' Top Ten Lists.

"Love is Strange" screens at 4PM, on Monday, February 16th, in Room 204 of the Pride Center. It is rated R, for mature themes and language. Running about 94 minutes, there will be plenty of time to discuss it at dinner which will follow.

Disclaimer: As of this writing, the DVD has not yet been released. And, unlike most of the films I've shown, I have not yet had the pleasure of viewing this movie.



PAID ADVERTISING - PAID ADVERTISING - PAID ADVERTISING



## WYNMOOR COUNTRY CLUB

Hi, my name is Bonnie Berg. Please join me for a tour of our amazing Country Club Community in Coconut Creek where we offer...

- \* 1 or 2 bdrm condos starting at \$50k.
- \* Incredible 24/7 lifestyle including:
  - 19 pools, golf, tennis, fully equipped gym, and dozens of exercise classes.
- \* State of the Art theater facilities offering movies, concerts, and live entertainment.
- \* Over 100 clubs for every interest including crafters, book lovers, gardeners, sports fans and more.

**FOR A TOUR APPOINTMENT CALL BONNIE BERG:**

**PHONE: 954-969-9248**

**CELL PHONE: 305-978-2374**

**BBERG@WYNMOORVILLAGE.COM**

## SAGE BIRTHDAYS FOR THIS MONTH

The SAGE Board would like to acknowledge the following members whose birthdays are this month as well as any other member whose birthday that we don't have.

If, when you renewed your membership or became a new member you did not give us your birthday, you may call the office and leave the information at 954.634.7219 or e-mail us @ sagesofl@gmail.com.

First Name	Last Name	Birthday	JACK	MYERS	Feb-11
MICHAEL H	DEVLIN	Feb-03	VALERIE	EISEN	Feb-12
MICHAEL H	DEVLIN	Feb-03	JOEL	TENDLER	Feb-15
TED	LIMBAUGH	Feb-03	GARY	KEMPLER	Feb-18
GEORGE H	HIBBERD	Feb-06	MARK	BARRON	Feb-20
GODFREY	ISAACS	Feb-09			
RICHARD	ROGERS	Feb-09			
LEE G	LAWSON	Feb-10			

### New Members

First Name	Last Name	Date Joined
FRANCIS	BUCKLEY	Dec-14
RON	ELKINS	Dec-14

### 5 Year Anniversaries

First Name	Last Name	Date Joined
BRUCE T	WILLIAMS	Dec-09

*If you have had an anniversary with SAGE for either 5, 10 or 15 years and you have not received your pin, please call the SAGE office (954.634.7219) to make an appointment to pick it up or they will be available at the Annual Meeting.*

**SAGE IS NOW ON FACEBOOK!**

**SEE OUR PAGE AT:**

[https://www.facebook.com/SageOfSouthFloridaInc?ref=aymt\\_homepage\\_panel](https://www.facebook.com/SageOfSouthFloridaInc?ref=aymt_homepage_panel)

## SAGE WANTS YOU!!!

**Please Join or Renew Today.**

NAME: \_\_\_\_\_ Birthday: Month \_\_\_\_\_ /Day \_\_\_\_\_

ADDRESS: \_\_\_\_\_

CITY: \_\_\_\_\_ STATE: \_\_\_\_\_ ZIP: \_\_\_\_\_

TELEPHONE: \_\_\_\_\_ CELL: \_\_\_\_\_

E-MAIL: \_\_\_\_\_ Would you like to receive the SAGE newsletter by email? circle one: Yes No

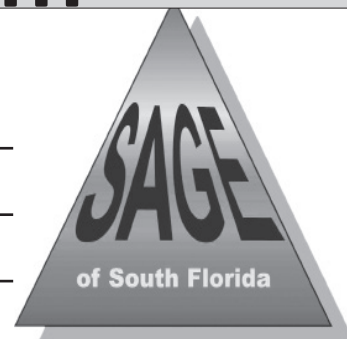
COMMITTEE INTEREST: \_\_\_\_\_

Would you care to make a tax-deductible contribution to SAGE included with your dues? Yes

**CIRCLE ONE: RENEWAL NEW MEMBER**

Please enclose a check in the amount of \$35.00 made payable to SAGE OF SOUTH FLORIDA

Mail To: SAGE of South Florida, PO Box 70516, Oakland Park, FL 33307



MEMBERSHIP APPLICATION

**SENIOR ACTION IN A GAY ENVIRONMENT**





**ANDREWS DINER**  
*"A Family Restaurant"*  
 Hosts: Angelo, Gerri & Marla  
 2980 N. Andrews Avenue  
 Fort Lauderdale, FL 33311  
 954.563.3555

**Hours**  
 Monday, Tuesday & Wednesday 7 AM - 3 PM  
 Thursday & Friday 7 AM - 8 PM  
 Saturday 7 AM - 3 PM  
 Sunday 7 AM - 2 PM



KAREN CARROLL  
 JULIE SLATER  
 ED FIORENZA  
 MARCUS ROWE

EYE EXAMS  
 & CONTACT LENS FITTINGS  
 BY INDEPENDENT DOCTOR  
 OF OPTOMETRY

2228 WILTON DRIVE  
 WILTON MANORS, FL 33305  
 954.567.3937  
 CHICOPTIQUE@AOL.COM

Show Us Your SAGE card and get a 20% discount!




MANDARIN, SZECHUN & CANTONESE FAVORITES!  
*Quality Food at Affordable Prices*  
 664 N Federal Hwy., Ft Lauderdale, FL 33304  
 954-527-0228

**CALL FOR A FREE CONSULTATION**


# CONFUSED ABOUT THE CHANGES IN MEDICARE?

**Medicare Specialist offering:**  
 Low Cost Medicare Supplements  
 Part D Prescription Drug Plans  
 No Cost Medicare Advantage Plans

**Very Affordable Rates On:**  
 Long Term and Home Care Coverage  
 Life and Disability Insurance  
 Guaranteed Income for Life



Call Gary Kempler at  
 954-328-5418  
 or send an email to  
 garykempler@ffig.com





## 30 Minute Men's Health Screening

**Good for the body. Good for the mind.**

Screening includes:

- Blood pressure and pulse oximetry
- Complete blood count
- Complete metabolic profile
- Lipid profile
- Prostate-specific antigen (PSA)
- Testosterone
- Body Mass Index (BMI)
- Vitamin D
- Thyroid (TT3, T4 and TSH)
- Diabetes (A1c)

**Monday to Friday, 7am - 5:30pm**  
**Saturday, 8am - 11am. Walk-ins welcome.**

\$75 flat fee. Screening may be covered by insurance.

Call **954.279.7946** to speak to the Men's Health Navigator.

Or email **MensHealth@BrowardHealth.org**.

He will assist you with alternative times, insurance verification and any other questions you may have about the screening.

**Fast, convenient, mobile health  
screenings on the new Man Van.**



6401 N Federal Highway,  
Fort Lauderdale, FL 33308

**Visit [BrowardHealth.org/BHIPmen](http://BrowardHealth.org/BHIPmen) to see a  
list of upcoming events and catch the  
Man Van out in the community.**



**SAGE VALENTINES DINNER at *PRIMAVERA***  
830 East Oakland Park Blvd., Ft. Lauderdale, FL. 33334  
(954) 564-6363

**SUNDAY, February 15, 2015    2PM - 5PM**



**2PM - 3PM: Seating and Mixer**  
**3PM - 4:30PM: MAIN MENU**

***SALAD Choice of one from:***

***Special House Salad*** (Romaine Hearts & more with lemon vinaigrette)  
**or Tomato & Fresh Mozzarella Salad** (*Sliced fresh Mozzarella & tomatoes, balsamic vinaigrette*)

***ENTREE' Choice of one from:***

**Pan Seared Salmon Fillet "Asparagus"** - Topped with a tasty Asparagus crust,  
Chardonnay & lemon sauce with asparagus  
***Chicken Parmigiana Style*** *Lightly breaded, topped with tomato sauce & mozzarella cheese*  
***Chicken Milanese*** *just breaded (Milanese)*  
**Chicken Breast "Marsala"** - sautéed with assorted mushrooms & in a Marsala wine sauce  
**Fettuccini Alfredo w/Shrimps-** Delicate noodles with a cream and parmesan sauce  
**Grilled Pork Tenderloin "Pancetta"** *Wrapped in bacon, Chardonnay & sun dried tomato sauce*

***Entrees with Fresh Rolls, Vegetables of the Day & Penne Marinara Side***

**4:30 PM: DESSERT COURSE:**

**Saint Honore' Cake** (Sugar-Free Dessert Available Upon Request)  
**Beverages:** Coffee/ Tea/ Iced Tea/Soda

**Pricing: \$26.00 @ for MEMBERS or \$30.00 @ for NON-MEMBERS    NO REFUNDS!**  
**IF YOU CANNOT MAKE IT, PLEASE CALL THE OFFICE & SEND SOMEONE IN YOUR PLACE**  
**Reservations Close: NO LATER THAN 1PM Wednesday, February 11, 2015**

-----  
**SAGE VALENTINES DINNER at PRIMAVERA RESTAURANT**

\_\_\_\_\_ MEMBERS @ \$26.00 & \_\_\_\_\_ NON-MEMBERS @ \$30.00 My Phone # \_\_\_\_\_

Name: \_\_\_\_\_ Write-in Your Entrée: \_\_\_\_\_

Name: \_\_\_\_\_ Write-in Your Entrée: \_\_\_\_\_

Name: \_\_\_\_\_ Write-in Your Entrée: \_\_\_\_\_

Name: \_\_\_\_\_ Write-in Your Entrée: \_\_\_\_\_

Mail with Payment to SAGE at: P.O. BOX 70516, Oakland Park, FL 33307  
Questions? Call the SAGE Hot Line at: (954) 634-7219                      A SAGE-Sponsored Activity



## ***Please* GIVE FROM YOUR HEART**

**On this upcoming February won't you give from your heart?**

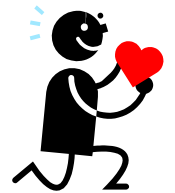
**You all belong to SAGE, the premier, most prestigious, senior non-profit LGBT organization in South Florida. All our activities are designed to break even at best, and SEVERAL have to be subsidized by our Organization.**

**Please help us to continue in our 20<sup>th</sup> year and beyond serving you and your needs, as well as continuing our community outreach efforts within both the LGBT and the mainstream communities.**

**On this St. Valentine's Day won't you please give from your heart?**

**YOUR TAX DEDUCTIBLE contribution\*, small or large, will help assure the financial health and continuing success of SAGE of South Florida.**

**Thank you all for your generous hearts!!!!**



---

### **SAGE'S 2015 GIVE FROM THE HEART CAMPAIGN**

**Name: \_\_\_\_\_ enclosed is a check for \$\_\_\_\_\_ as my donation to SAGE's 2015 Give From the Heart Valentine's Campaign.**

**\*As a 501©3 Nonprofit, any donations SAGE receives are tax deductible as allowed by IRS laws and regulations.**

**Mail your donation to: SAGE at: P.O. BOX 70516, Oakland Park, FL 33307  
Questions? Call the SAGE Office at: (954) 634-7219      A SAGE-Sponsored Activity  
*Donors of \$500 or more will be listed as Archangels. All others will be listed as Angels in future issues of the Newsletter.***

**All are SINCERELY and GRATEFULLY APPRECIATED!**



**SAGE OF SOUTH FLORIDA PRESENTS  
DR. DERIC BOWNS IN A FEBRUARY PIANO RECITAL  
SUNDAY FEBRUARY 8, 2015 AT 2:00PM  
PRIDE CENTER MAIN HALL  
2040 N Dixie Hwy Wilton Manors FL 33305**

**Program  
E. Grieg  
Lyric Suites  
Op. 65 No. 4 Salon  
Op. 43 No. 5 Spring  
Op. 54 No. 3 March of the Dwarfs**

**C. Debussy  
Nocturn  
Danse**



**F. Doulenc  
Improvisations No. 7, 13  
Nocturn No. 1**

**S. Prokofiev  
Romeo and Juliet, Op. 75  
No. 4 Juliet as a young girl  
No. 6 Montagues and Capulets  
No. 7 Friar Laurence  
No. 10 Romeo and Juliet before Parting**

**FREE EVENT OPEN TO ALL WHO WISH TO ATTEND**



# SAGE Activities Calendar

February 2015						
SUNDAY	MONDAY	TUESDAY	WEDNESDAY	THURSDAY	FRIDAY	SATURDAY
<b>1</b>	<b>2</b> 11AM - 1PM SAGE On the Border Co-Ed / Alternatives @ Volen Center in Boca	<b>3</b>	<b>4</b> 1 PM Men's Drop In @ Pride Center 4 PM COMPUTER CLUB @ Pride Center	<b>5</b>	<b>6</b>	<b>7</b> 12:30 PM LUNCH & LEARN Call Office @ (954) 634-7219 for reservation 9:30AM Board Meeting Pride Center
<b>8</b> 2PM Free Piano Concert by Dr. Deric Bownds @ Pride Center Main Hall	<b>9</b> 11AM - 1PM SAGE On the Border Co-Ed / Alternatives @ Volen Center in Boca	<b>10</b>	<b>11</b> 1 PM Men's Drop In @ Pride Center CANCELLED - 4 PM COMPUTER CLUB @ Pride Center	<b>12</b> 12PM SAGE Women's Lunch @ Golden Corral - Tamarac - call Nancy for info (954) 741-15407	<b>13</b>	<b>14</b> Valentine's Day 11AM SAGE at Stonewall - Book Club @ Stonewall Library Call Alan Dorfman 561-499-2913 or Philip Collier 443-614-7135
<b>15</b> 2PM Valentines Dinner & Dance Party - Primavera Restaurant	<b>16</b> President's Day 11AM - 1PM SAGE On the Border Co-Ed / Alternatives @ Volen Center in Boca 4 PM SAGE Movie "xxxxxxx" @ Pride Center - dinner TBD	<b>17</b>	<b>18</b> Ash Wednesday 1 PM Men's Drop In @ Pride Center 4 PM COMPUTER CLUB @ Pride Center	<b>19</b> 1-3PM SAGE Co-Ed Discussion Group @ Pride Center Rm 207	<b>20</b>	<b>21</b> 1PM Camera Club Photo-Op Renaissance Festival @ Quiet Waters Park Meet at Pride Center no later than 1PM
<b>22</b>	<b>23</b> 1AM - 1PM SAGE On the Border Co-Ed / Alternatives @ Volen Center in Boca Men's Singles DINNER @ TROPICS - call John C (954) 933-2963	<b>24</b>	<b>25</b> 1 PM Men's Drop In @ Pride Center 4 PM COMPUTER CLUB @ Pride Center	<b>26</b>	<b>27</b>	<b>28</b> 1PM Camera Club @ Pride Center

# ***SAVE the DATES:***

<b>March 22, 2015, Sunday</b>	<b>Annual Meeting at Galuppi's</b>
<b>April 4, 2015, Saturday</b>	<b>Pippin at the Broward Center</b>
<b>April 21, 2015, Tuesday</b>	<b>Meet-Up at Flip Flops</b>
<b>May 9, 2015, Saturday</b>	<b>Anything Goes at the Broward Center SOLD OUT</b>

## ***Community Events:***

- **Ballet and Opera Group** meets at Pride Center at 12:30 PM in room 204 on every other Sunday, in February on Feb. 8<sup>th</sup> and 22<sup>nd</sup>