

# THE SAGE

The Newsletter of SAGE of South Florida

May 2014

## **SAGE's National Resource Center on Aging Receives Accolades.**

We are pleased to announce that SAGE's National Resource Center on LGBT Aging (NRC) continues to receive national acclaim and awards for its premiere training program and online resources! At the recent American Society on Aging national conference, [Aging in America](#), the NRC received the [Gloria Cavanaugh Award for Excellence in Training and Education](#). This annual award is given to a training program that shows significant and long-term contributions to the field of aging, and demonstrates exemplary training and educational efforts.

In addition, the NRC has been selected as one of the Top 5 Nominees in LGBTQ rights for the Annual CLASSY Awards. [The Annual CLASSY Awards](#) (The CLASSY's) are the largest social impact awards ceremony in the United States, highlighting the greatest champions of social progress. The CLASSY's nominees represent an elite pool of high impact organizations that are driving measurable social change around the world. Read more about all the nominees at [SAGEUSA.org](#) and see what they have to say about SAGE.



## **SAGE Leads the LGBT Aging Track at [Aging in America](#).**

Hosted by the [American Society on Aging](#) (ASA), [Aging in America](#) is the largest aging conference in the nation with 2,500 professional presenting over 500 workshops over five days. SAGE staff hit the conference running with their involvement in 14 of the more than 41 conference workshops, poster sessions, and peer sessions related to LGBT issues, HIV and aging, policy, and sexuality. A highlight of the conference was the Diversity Summit, in which SAGE's Executive Director, Michael Adams-along with a remarkable slate of panelists-examined the Affordable Care Act and how training can better professionals to motivate older adults to engage in successful care management practices. Learn more about SAGE's involvement at the conference via the [SAGE Blog](#).

## SAGE OF SOUTH FLORIDA, INC.

2040 N. Dixie Highway  
Wilton Manors, FL 33305

### Mailing Address:

SAGE of South Florida  
PO Box 70516  
Oakland Park, FL 33307  
Message Line: 954.634.7219

All Copy Deadline: 8th of the Month

Advertising Deadline: 1st of the Month

Email to Editor: sagesofl@gmail.com attn: Editor

Website: www.sagewebsite.org

### OFFICERS

President	Kenneth Goodman
Vice President	Ron Catena
Secretary	Ann C. Smith
Assistant Secretary	Frank Piasecki
Treasurer	Inez Pasher

### BOARD MEMBERS AT LARGE

John Chandler, Nancy Drennen, John Harris, Gary Kempler, Gary "Lee" Lawson  
Frank Piasecki, Bruce Williams

### COMMITTEE ASSIGNMENTS

Advertising	Inez Pasher
Archivist	Hank Brooks
Book Club	Ruchard Hess (F)
	Philip Collier (F)
Computer Club	Ken Goodman (F)
Education	Bruce Williams
Funding	Gary Kempler (CC)
	John G. Harris
	Ron Catena
	Inez Pasher (CC)
Lunch and Learn	John Chandler w/ Leo Glickstein
Membership	Ann Smith (C)
	Nancy Drennen
	Frank Piasecki
SAGE Co-Ed Discussion Group	John Harris
SAGE Camera Club	Ron Catena (C)
SAGE Men's Drop-In	Bill Woodward (F)
	Norm Peters (F)
Men's Singles	John Chandler
Movie Club	Ken Lowery (F)
	Carl M. Galli (F)
Newsletter Editor	Sharron Demarest
Associate Editor	Inez Pasher
Contributing Columnists	Deric Bownds, Ph.D
	Carol Youngblood
	Bruce Williams
	Gary "Lee" Lawson
Office Manager	Nancy Drennen
Pride Center (SAC) Liaisons	Gary "Lee" Lawson
	Bruce Williams
	Ron Catena
Public Affairs	Ann Smith (C)
SAGE on the Border/Alternatives	Caroline Leto (F)
	Larry McNear (F)
	Bruce Todres (F)
SAGE Women	Nancy Drennen
Social Activities	Jean Johnson (Advisory)
	John G. Harris (CC)
	Carl M. Galli (Advisory)
Support	Leo Glickstein
	Godfrey Isaacs
	Inez Pasher
Volunteer Coordinators	Frank Cavanaugh
	Ken Moore
	Les Oldenbusch
Webmaster	Richard Bunyan

*Appearance of an advertisement in this newsletter does not constitute endorsement by SAGE of South Florida, Inc. of the service being offered. We thank our advertisers for helping us to pay for printing this newsletter.*

### SAGE Editorial Policy

SAGE welcomes contributors to this newsletter. An author may request their entry to be "anonymous." However, the submission as received by SAGE must be accompanied by the full name and address of the author. Items will be published at our discretion. If we feel that we cannot publish a submission anonymously, we will contact the author. We reserve the right to edit items for size considerations, clarity or standards of decency.

# Highlights

## SAGE Cover

### Press Release SAGE USA.

Masthead	1
SAGE Mission Statement	1
SAGE Advertising Policy	1
SAGE Friendly Support	1
Reminder from the Board	2
SAGE Lunch & Learn	2
SAGE Members in Need	2
Sharing SAGE with Others	2
SAGE Meetings	3
SAGE Co-Ed Discussion Group	4
SAGE Camera Club	4
Notes from the Men's Drop-In	4
Notes from SOBA	4
SAGE Spotlight	5&8
Social-Lites	6
Annual SAGE Cruise	7
Helpful Hints from the Desk of David Treece	9
See You at the Movies	10
Milestones	12

## SAGE FRIENDLY SUPPORT PROGRAM

We'd like to think we are not merely fair weather friends, but people who really care about our SAGE family. If you know of any SAGE member who would appreciate a friendly call, is sick, in the hospital, recently lost a loved one, or just needs a note of cheer, please contact:

For women — Inez Pasher @ 954.563.2814.

For men — Leo Glickstein @ 954.935.5799.

This is a SAGE sponsored activity.

## SAGE MISSION STATEMENT

SAGE of South Florida is a non-profit organization for Senior action in a Gay Environment to enrich the lives of the GLBT senior community through membership inclusive of age, gender, race, nationality and religion. We believe this can be accomplished by sponsoring social alternatives To provide personal interaction, offering educational opportunities to deal with the special needs of aging, and promoting contact with the isolated and homebound persons of our community. SAGE is also an advocate for the concerns and needs of the senior community at large, providing referral information on community resources and promoting inter-generational communication in the GLBT community. SAGE was founded in 1994 as a Florida "not for profit." Corporation. (Federal Tax-Exempt status of 501(c)3 allowing tax-deductible donations.)

Our monthly newsletter is partially underwritten by advertising revenue. We have a written fee schedule for various sizes and number of months. An insert, instead of display advertising, is also available for business and organizations at a very reasonable rate. Contact the SAGE office at 954.634.7219 or email at sagesofl@gmail.com for more information. Appearance of an advertisement in this newsletter does not constitute endorsement by SAGE of South Florida, Inc. of the service being offered. We thank our advertisers for helping us pay for printing this newsletter. Do you have friends or family who own a business? Ask them to place an ad in THE SAGE. We appreciate our business supporters. As members, let's support them in return.

## SHARING SAGE WITH OTHERS

Reconnecting with old friends and meeting new acquaintances is a great part of the SAGE tradition. We invite you to share this tradition by inviting someone new to SAGE to one of our many SAGE-sponsored events. Share the camaraderie and support found among SAGE members with others.

When you invite someone new to any SAGE-sponsored events and that friend joins SAGE, he or she will become a SAGE of South Florida member for the reduced fee of \$25 for their first year of membership.

## SAGE MEMBERS IN NEED

Please contact the **AADRC (Aging and Disability Resource Center)** @ **954.745.9779**. It is a one-stop center for information and referral services available to seniors and their care-givers in our community.

## REMINDER FROM THE BOARD

IF YOU RESERVE A PLACE AT THE 'LUNCH & LEARN' AND YOU DO NOT ATTEND, YOU ARE STILL RESPONSIBLE TO SAGE FOR PAYMENT. WE MUST GIVE THE CATERER AS EXACT A COUNT AS POSSIBLE BASED ON YOUR RESERVATION. THE CATERER MUST BE PAID WHETHER OR NOT YOU SHOW UP.

### MONTHLY "LUNCH & LEARN"

12:30 PM, May 3, 2014

**HERB SKOLNICK**

**COMMUNITY CENTER**

800 S.W. 36th Avenue, Pompano Beach, FL

**RESERVATIONS REQUIRED!!!!!!!!!!**

Members with reservations: \$14.00

All others: \$19.00

Everyone Pays at the Door.

Doors Open at 12:00PM

If you arrive early, please make yourself comfortable in the lobby and meet and mingle with other SAGE members and their guests.

Reservations must be made by 12:30PM on the Thursday preceding the Luncheon, as the caterer must have the final count.

Please make reservations for the May "Lunch & Learn" with the SAGE office @ 954.634.7219.

### MENU

**Romaine Hearts Salad**

(w/ vinagrette dressing)

**Rigatoni w/ Marinara Sauce**

**Chicken Cordon Bleu w/ Turkey,**

**Ham and Swiss Cheese**

**Green Beans**

**Peach Tarte w/ Blueberries**

### May Speaker:

**David Treece**

**Scamming the Elderly  
Prevention and Solutions**

PAID ADVERTISING - PAID ADVERTISING - PAID ADVERTISING -

## Ft. Lauderdale PIZZA & PASTA

Serving Lunch & Dinner • Delivery after 4 pm



2100 East Oakland Park Blvd.  
Ft. Lauderdale, FL 33306  
One Block West of US 1

**954-566-5226**

[www.fortlauderdalepizza.com](http://www.fortlauderdalepizza.com)



**Peter Pan Diner**  
**Open 24/7**  
RESTAURANT • BAKERY • LOUNGE

- COCKTAILS • CATERING •
- BANQUET FACILITIES •
- BAKERY ON PREMISES •

1216 E. OAKLAND PARK BLVD., FORT LAUDERDALE, FL 33334

**954.565.7177**

**WWW.PETERPANDINER.COM**

**OVER 100 SUGAR FREE ITEMS**  
**CHILDHOOD MEMORIES OF SWEETS**  
**Toys, Sodas, Groceries 'n MORE**  
**OVER 2000 Greeting Cards**  
**SAME-SEX Wedding Cards**  
**& Cake Toppers**



**10% DISCOUNT**  
**WHEN YOU SHOW YOUR**  
**SAGE CARD ON ANY**  
**PURCHASE \$10.00 & OVER**

**2205 WILTON DRIVE**  
**FORT LAUDERDALE**



[TOTHEMOONMARKETPLACE.COM](http://TOTHEMOONMARKETPLACE.COM)

**954-564-2987**



## SAGE COMPUTER CLUB

KEN GOODMAN



Do you want to catchup to your grandkids or sons and daughters? Come and enjoy learning about technology at the SAGE Computer Club. Would you like to feel more confident when using your computer, smart phone, tablet, or any other type of internet connected device? You should come and join us at the SAGE Computer Club. Bring your questions and problems and we will try to help you solve them. No question is too basic, we want everybody to learn and become better at using their devices.

The Computer Club meets every Wednesday at 4 pm for at least an hour. Any new Computer related news is discussed, followed by the issues you wish to bring or a current topic of interest. Bring your questions and problems and we will try to help.

Also, if you wish, you can join us for dinner after the meeting at a nearby reasonable gay friendly restaurant.

The meetings of the SAGE Computer Club are held at the **Pride Center facility on Dixie Highway** Building A in the AV Room 206 on **Wednesdays** at 4PM. Call for directions if you need them at 954-634-7219 or the Pride Center's switchboard at 954.463.9005.

***This is a SAGE sponsored activity.***

## SAGE ON THE BORDER/ALTERNATIVES

CAROLINE LETO/BRUCE TODRES



**Where:** the Volen Center  
1515 West Palmetto Rd., Boca Raton

**When:** Every Monday from 11AM to 1PM.

**Welcome everyone, no reservation required.**

**Please call the Volen Center to see if it is**

**open as the Center closes for holidays.**

***This is a SAGE sponsored activity.***



## WEDNESDAY MEN'S DROP-IN

RON CATENA



**Where:** The Pride Center.

**When:** Every Wednesday from 1PM to 3PM.

**Welcome all men, no reservation required.**

***This is a SAGE sponsored activity.***

## 1ST & 3RD THURSDAY CO-ED DISCUSSION

FRANK PIASECKI

**Where:** The Pride Center.

**When:** May 1st & May 15th-1PM

**Welcome to all, no reservation required.**

***This is a SAGE sponsored activity.***

## SAGE MEN'S SINGLES GROUP

JOHN CHANDLER



Are you a single man who enjoys the company of other single men? If you do then we have an evening for you. Every 4th Monday of every month, SAGE Board member, John Chandler, co-ordinates cocktails and dinner at Tropics restaurant in Wilton Manors. Cocktails, lively conversation and flirting begin at 5:30. At 6:30 the party moves into the dining room where we enjoy a terrific dinner followed by complementary coffee. Prices are reasonable and the food is always wonderful (as is the company).

**We usually wear red shirts so we can all recognize each other.**

**Our next dinner will be held on Monday, May 26, 2014.**

For reservations please contact **John Chandler @ 954.933.2963** or e-mail @ [stonyman4u@aol.com](mailto:stonyman4u@aol.com) and don't forget to wear your red shirt!

***This is a SAGE sponsored activity.***

## SAGE BOOK CLUB

RICHARD HESS & PHILIP COLLIER

**When:** May 10, 2014. 11AM

**Where:** Stonewall National Archives

**All Readers are welcome. No reservation required.**

**Contact for information:** Richard Hess, 954.568.1592 or

Philip Collier, 443.614.7135

***This is a SAGE sponsored activity.***

## SAGE CAMERA CLUB

JOHN HARRIS

**Where:** The Pride Center.

**Meet-Up:** Tuesday, May 13, 2014

**Regular Meeting:** Saturday, May 24, 2014

**Welcome to all shutterbugs, no reservation required.**

***This is a SAGE sponsored activity.***

## SAGE WOMEN @ GOLDEN CORRAL

NANCY DRENNEN



**Where:** Golden Corral.

7401 Commercial Blvd. Tamarac

**Phone:** 954.623.6400

**When:** Noon, 2nd Thursday of every month.

**Call Nancy @ 954.741.1540 for reservations.**

***This is a SAGE sponsored activity.***

**2014 Schedule: TBA**

## "WHAT CRUISE?" THE HALLOWEEN CRUISE!!!

Time to get ready for this year's SAGE Cruise! Sail on Princess Cruise Lines Caribbean Princess **October 27- November 1**. Cruise leaves from Ft. Lauderdale, and stops at Grand Cayman and Cozumel with an on-board party on Halloween night.

*And the party continues until we dock in Ft. Lauderdale.*

**Contact Eric Muhlitner @ [emuhlitner@cruiseplanners.com](mailto:emuhlitner@cruiseplanners.com)**

**or by phone @ 855.280.5342 or 704.322.3677.**

***Check out Eric's website @ [www.ericdavidtravel.com](http://www.ericdavidtravel.com)***

## NOTES FROM THE SAGE CO-ED DISCUSSION GROUP (AT THE PRIDE CENTER)

The SAGE Co-Ed Discussion Group has been meeting since last fall and we would welcome your participation and join us. As mature members of the LGBT community, this group is targeted for women and men. We share our insights and experiences in a cordial atmosphere on general topics related to life, work, relationships, "memory lane", LGBT issues, and other experiences related to life in general.

The people in this group are nice! However, we do need and want more participation by women. A co-ed group offers a unique perspective from both genders. We need more LGBT women in the group to ensure that dynamic of a co-ed experience.

We meet on the first and third Thursday of each month at the Pride Center in Room B208. There is no fee for participation. If you are a

good-natured individual who would enjoy meeting on a regular basis with others in our age group then please consider coming to check us out.

Although it takes time to get to know others, the group experience such as this over a period of time allows all of us to get to know each other. You will like what you see and will appreciate the insights of others. Fellow group members will also get to know and appreciate your input and contributions.

Our meeting dates for May are May 1<sup>st</sup> and May 15<sup>th</sup> and the meeting begins at 1 pm. Mark your calendars and plan to join us.

--Frank

***This is a SAGE sponsored activity.***

## NOTES FROM THE SAGE CAMERA CLUB

Hello Shutterbugs,

Once again, the SAGE Camera Club will assemble for our monthly meeting on Saturday, April 26th, 2014, at 1PM at the Pride Center. We have a great time, learn a lot, share our photos and experience, and just enjoy having like-minded shutterbugs together. Our next Photo Op will be on Tuesday, May 13th, at the Pride Center at 1PM. We will then amble over to the Wilton Drive area and snap our little hearts out. Our May monthly meeting will be on Saturday, May 24th, at 1 PM at the pride Center. We hope to see all of you there...*We also discussed our future event schedule:*

May 13th

May 24th

Photo Op (Wilton Drive)  
Camera Club Meeting

Meet at Pride Center 1PM  
Pride Center, Room 206 1PM

***This is a SAGE sponsored activity.***

--John

## NOTES FROM THE MEN'S DROP-IN

I am delighted to report the SAGE Board of Directors have once again appointed me as the board representative to the Wednesday Men's Drop-In. This group is near and dear to my heart and I look forward to another year of our weekly meetings where good conversation and friendship are the order of the day.

We have enjoyed robust attendance lately with many new people showing up all the time thanks in part to the efforts of some of our regulars who spread the word. A couple of hours socializing in a comfortable environment is good for our mental health as we enjoy our senior years. Conversation is always on point and in some cases very helpful. We enjoy plenty of good-natured ribbing and much laughter. Talk ranges from movie reviews, restaurant reviews or opinions on the latest star to get bounced from Dancing with the Stars. We also discuss more serious topics like current events (always conducted in an atmosphere of respect).

Good news for you social butterflies: the SAGE Social Committee has a whole host of events planned for the next months. Read this newsletter and stay informed. All our activities are listed in the monthly

calendar and in most cases a reservation flyer is included for those events requiring advance reservations. We try to vary the venues to accommodate all our members.

As SAGE of South Florida celebrates its 20<sup>th</sup> year of service to the LGBTQ community we continue to provide education and social programs to our members along with several programs open to non-members.

Remember, SAGE is an all-volunteer organization with no paid staff. These volunteers work hard to serve our community. If you are not yet a member we invite you to join and become part of our family of fun-loving and knowledgeable men and women who give you a warm welcome.

If you have not contributed to SAGE's annual *Give from the Heart* campaign please take the time to do so. Every contribution goes toward furthering our services to the community.

--Ron

***This is a SAGE sponsored activity.***

## NOTES FROM SAGE ON THE BORDER/SOBA

Once upon a time a little group was formed. This year will be five years running and I'm happy to say going strong. Alternatives began with four or five in attendance and to date, if all are present, we count 21.

Recently, our growth has been slowed, but 18 is a good number. Though we have lost some of the intimacy a smaller group affords, we remain a solid, close knit bunch. Our format remains the same with one change. Once a month topics are submitted by the group itself and issues are raised that some people have a burning desire to discuss. No subject is too silly and it seems to be working out well.

On March 18, Ann and I, as well as Bruce and Larry, were invited to the annual Volunteer Appreciation Luncheon held at the lovely Benvenuto in Boynton Beach. Jean and Frank, who fill in for us occasionally, were also invited but could not attend. Once again, the event provided great food, dancing, prizes and we were indeed made to feel special.

Recently, the Mae Volen Center has initiated a wonderful Life Enrichment Program providing lunch at a mere cost of \$3.00 supplied by Toojoys. Great for seniors and many of us in Alternatives are taking advantage of this perk. We hope to see you there. Come check us out. Til next time...

--Caroline

***This is a SAGE sponsored activity.***

# SAGE Spotlight: March Annual Meeting.



**SAGE Board of Directors:** Lee Lawson, Richard Werner, Carl Barton, Allen Churchman, Ken Goodman, Ron Catena, Inez Pasher and Ann Smith. (not pictured: Bruce Williams and Frank Piasecki).



**SAGE Volunteers of the Year:** Caroline Leto.  
(not pictured: Sharron Demarest).



**Spirit of SAGE Award:** Julia Landis.





SAGE Volunteer of the Year: *Carl Barton.*



Retiring Board Member: *Nancy Drennen.*



Murray Robbins Award: *Ken Goodman.*

## **GIVE FROM THE HEART!!!**

Over the years our SAGE family has given generously from their hearts to the annual SAGE Give from the Heart campaign.

Once again, we call upon our membership to support the programs and activities SAGE produces throughout the year.

Give a little, give a lot...

Every dollar you donate is appreciated and will be put to good use.

**(FOR MORE INFORMATION ON OUR  
SAGE GIVE FROM THE HEART CAMPAIGN  
PLEASE READ THE ENCLOSED FLYER.)**



Photos: *Sharron Demarest*

## SAGE SOCIAL-LITES



John G. Harris

As the new SAGE Social Committee chair, I welcome you to my column. Your SAGE Social Committee, consisting of Carl Barton, Ron Catena, John Chandler, Richard Werner, SAGE President Ken Goodman, and

SAGE Past President Carl Galli, have been working hard to not only offer our members quality events at the lowest prices, but varied venues and options to make your SAGE membership an even more enjoyable experience.

We have already planned out the whole year in advance, with a mixture of Meet-Ups and fixed price dinners, that are sure to please your palate AND your pocketbook. Our year's events will end in December at the combined 20th Anniversary and Holiday Party at The Westin Cypress Creek, with a great dinner, dancing, and the entertainment of Cissy and Damon, who are undoubtedly everyone's favorite group. As the year progresses, we will give you ample time and opportunity to sign-up for, and enjoy, these events.

I am also the Cruise Director for the Annual SAGE

Cruise, to be held on October 27th--November 1st, on the beautiful Caribbean Princess. This will be a 5-day cruise to Grand Cayman and Cozumel, and will of course include Halloween Night on the ship.

We honestly look forward to staging, attending, and welcoming you to these events over the next several months.

Read your Newsletter, check out the monthly flyers, sign up for, and attend as many events as you can.

We do all this for YOU, the members of SAGE, to make your experience more enjoyable.

***This is a SAGE sponsored event.***

### **HAPPY BIRTHDAY TO SAGE...HAPPY HOLIDAYS WITH SAGE!!!**

***This year marks SAGE of South Florida's 20th birthday and the SAGE board has decided to make it a doozy!!!***

***SAGE will host a combination birthday party/holiday party bash!!!  
Venue, pricing and date and time have yet to be determined but we know the festivities will feature a special menu, entertainment, gifts, birthday cake, and lots of surprises!!!***

PAID ADVERTISING - PAID ADVERTISING - PAID ADVERTISING - PAID ADVERTISING - PAID ADVERTISING - PAID ADVERTISING

Household Pests  
•  
Lawn Spraying  
•  
Rodent Control  
•  
Termites  
•  
Bed Bugs  
•  
RESIDENTIAL  
COMMERCIAL  
•  
Licensed & Insured

**(954) 920-BUGS (2847)**

"Hello Aloha... Goodbye Bugs"

**The Parish of Sts. Francis and Clare**  
*A Progressive Community in the Catholic Tradition  
Where We Welcome and Appreciate Diversity!*

Mass Times:  
Wednesday 7:00 PM  
Saturday 5:00 PM • Sunday 10:30 AM

101 N.E. 3rd St.  
Ft. Lauderdale, FL 33301

**954.731.8173**  
**[www.stsfrancisandclare.org](http://www.stsfrancisandclare.org)**



**“WHAT CRUISE?”  
THE HALLOWEEN CRUISE,  
OF COURSE!!!**

**Time to get ready for this year's SAGE Cruise!**

**Sail on Princess Cruise Lines Caribbean Princess**

**October 27th-November 1st, 2014.**

**Cruise leaves from Ft. Lauderdale with stops at Grand Cayman and Cozumel and an on-board party Halloween night.**

*The party doesn't quit until we dock in Ft. Lauderdale!!!*

**Contact Eric Muhlitner @ [emuhlitner@cruiseplanners.com](mailto:emuhlitner@cruiseplanners.com)**

**or by phone @ 855.280.5342 or 704.322.3677**

*Check out Eric's website @ [www.ericdavidtravel.com](http://www.ericdavidtravel.com).*

*Look for further Cruise News and Updates in the newsletter as they become available.*

PAID ADVERTISING - PAID ADVERTISING - PAID ADVERTISING - PAID ADVERTISING - PAID ADVERTISING

**AFFORDABLE HOME  
HEALTH CARE**



**LGBT  
HOME CARE FOR  
LGBT  
SENIORS**

**EMERALD ELITE**  
SENIOR HOME CARE

CALL ERNEST OLIVAS  
**954-629-1377**  
[Ernest@EmeraldEliteHomeHealth.com](mailto:Ernest@EmeraldEliteHomeHealth.com)

[www.EmeraldEliteHomeHealth.com](http://www.EmeraldEliteHomeHealth.com)

*What sounds would you miss if you  
couldn't hear them anymore?*

Come see us at *A.Bel Audiology Associates*  
for *better hearing solutions.*



*Paula Liebeskind, Au.D*  
*Phone: 954-435-9779*  
*1861 N.W. 123rd Ave.*  
*(in Pillbox Plaza)*  
*Pembroke Pines, FL 33026*



## Certificate of Deposit - (CD)

Someone called my office inquiring about a higher rate CD advertised in the *Miami Herald*. There are various offices that sell artificially high CD rates, and in the fine print clarify that these CD rates include a “promotional” incentive. What they do is gross up the rate offered by the bank in order to get you into to visit them. They are mostly insurance-based investment firms who offer these CDs as a marketing incentive. The same ad said “Ask us about our IRA and Rollover Specials.” I personally find this kind of marketing questionable. If you wish to pursue one of these CDs, just realize that you are being lured into an office in order to be sold other financial products.

If you are looking for competitive CD rates, here are two online resources: [www.bankrate.com](http://www.bankrate.com) and [www.bestcashcow.com](http://www.bestcashcow.com). These sites will give you information about current rates on a variety of financial products from mortgages to CDs.

I always recommend buying CDs from a bank rather than from a broker unless you know for sure what you are getting. Many brokerage firms sell CDs, but these are often traded in the market and can go up and down in value and many have very long maturities. Most people who buy CDs are not looking for any market fluctuation at all so always know what you are getting.

**SURVIVOR'S GUIDE:** I have a 30-page organizer that can help you put your important information in one place. The organizer is available to be downloaded from my website: [www.TreeceFinancialGroup.com](http://www.TreeceFinancialGroup.com). This can be extremely helpful, especially for family members who may need this information in an emergency.

*As a Fiduciary, I have a duty of utmost care and loyalty to my clients and part of my financial planning practice is to look at everyone's overall needs and not just financial needs, and when I come across something useful, I like to pass it on.*

*For further information please email: [david@davidtreece.com](mailto:david@davidtreece.com) or visit: [www.treecefinancialgroup.com](http://www.treecefinancialgroup.com)*

*Securities and Advisory Services offered through Cetera Advisors LLC, member FINRA/SIPC. Cetera is under separate ownership from any other entity.*

PAID ADVERTISING - PAID ADVERTISING - PAID ADVERTISING - PAID ADVERTISING - PAID ADVERTISING - PAID ADVERTISING



**CRUISE PLANNERS**  
*Your Land and Cruise Specialist*

Phone: (704) 322-3677  
Toll Free: (855) 280-5342  
(704) 763-9865  
[emuhlitner@cruiseplanners.com](mailto:emuhlitner@cruiseplanners.com)  
[www.ericdavidtravel.com](http://www.ericdavidtravel.com)  
Charlotte, North Carolina


*Independently Owned & Operated*

**Eric Muhlitner**  
Franchise Owner

**Robin L. Bodiford**  
ATTORNEY AT LAW  
WILLS • TRUSTS • BANKRUPTCY

LAW OFFICES OF ROBIN L. BODIFORD, P.A.  
2550 N. FEDERAL HWY • SUITE 20  
FORT LAUDERDALE, FL 33305  
PH 954-630-2707 • CELL 954-802-1441  
[email: rbodiford@aol.com](mailto:rbodiford@aol.com) • [www.RobinBodifordLaw.com](http://www.RobinBodifordLaw.com)

AUTHOR, "Fresh Start Bankruptcy" &  
"A Simplified Guide to Creating a Personal Will" (John Wiley & Sons, 2003)





**PRIMAVERA Restaurant**  
*Fine Italian Cuisine since 1985*

**AWARD WINNING WINE LIST**  
**PRIVATE BANQUET ROOMS**

*Located in Primavera Plaza  
830 East Oakland Park Blvd.  
Fort Lauderdale, FL 33334*

**(954) 564-6363 • [www.TRUEITALIAN.COM](http://www.TRUEITALIAN.COM)**

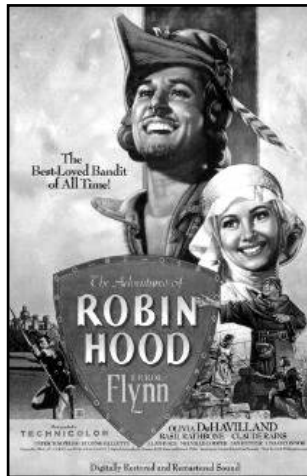
# SEE YOU AT THE MOVIES



Ken Lowery and Carl M. Galli



The SAGE movie for May will be shown on **May 19<sup>th</sup>** at 4PM at the Pride Center In Room 204 on the second floor. The movie will be *The Adventures of Robin Hood* (1938) starring **Errol Flynn** and **Olivia de Havilland** and is one of the greatest, most colorful costume dramas, swashbucklers, and romantically-tinged adventure films in film history.



After the icy restrictions placed on the film industry following the establishment of the Production Code Administration in the mid 1930s, Warner Bros. Studios decided to find relief from censorship by bringing about a renaissance of the historical-costume adventure film, with swordplay, sweeping action, and romantic charm.

It expertly tells the story of the heroic Robin and his Sherwood Forest followers, who saved England from royal treachery by scheming nobles during the absence of the crusading and captured/ransomed King Richard the Lion-Hearted. The movie also presents the fairy-tale romance with nostalgic chivalry, colorful pageantry, and righteousness triumphant over villainous and evil might, along with spectacular action.

The spectacle includes superb casting of memorable characters, a light-hearted, but spirited story, exciting dueling and action scenes requiring extensive stunt work, and the ideal love team of de Havilland and gallant Flynn with their witty and tender romantic scenes together. (It was their third of eight films together -- the first two were *Captain Blood* (1935) and *The Charge of the Light Brigade* (1936) -- and this was the first of their pairings in color.) Flynn did most of his own dueling and other action stunts except for the expert archery.

The film was well reviewed and became the second highest-grossing film of the year, with just over \$4 million in revenues at a time when the average ticket price was less than 25 cents. Warner Bros. was so pleased with the results that they cast Flynn in two more color epics.

The film won three Academy Awards at the 11th Academy Awards and was nominated for one more:

## Academy Awards (1938):

Won: *Best Art Direction - Color*  
(Carl Jules Weyl)

Won: *Best Film Editing* (Ralph Dawson)

Won: *Best Original Score*  
(Erich Wolfgang Korngold)

*The love theme of Robin and Marian went on to become a celebrated concert piece.*

As usual we will be going to dinner following the movie. We'll announce the choice at the close of the movie and ask for a show of hands of

those who would like to join the group.

Please help us by returning your chair to stacks against the side walls. Thank you.

See you at the movie!

***This is a SAGE sponsored activity.***

PAID ADVERTISING - PAID ADVERTISING - PAID ADVERTISING -

## Will You Outlive Your Money?

### Treece Financial Group, Inc.

Investment Advisor Representative  
with a fiduciary duty to his clients



- **Asset Allocation**
- **Estate and Financial Planning**
- **Social Security Planning**
- **Portfolio Review and Performance Evaluation**
- **Personal Assistance & Exceptional Service**



Visit: [www.treecefinancialgroup.com](http://www.treecefinancialgroup.com)  
to download our **FREE** Survivor's Guide

**Headquarters**  
9999 NE 2nd Avenue, Ste. 203  
Miami Shores, FL 33138  
Phone: 305-751-8855

**Broward Office**  
Wilton Executive Suites  
2312 Wilton Drive  
Wilton Manors, FL 33305  
Phone: 305-751-8855

Securities and Advisory Services offered through Cetera Advisors LLC, member FINRA/SIPC. Cetera is under separate ownership from any other entity.

PAID ADVERTISING - PAID ADVERTISING - PAID ADVERTISING -

### GEORGE GEORGAKAKIS, M.D.

DIPLOMATE AMERICAN BOARD OF OTOLARYNGOLOGY  
PEDIATRIC AND ADULT OTOLARYNGOLOGY  
HEAD AND NECK SURGERY

4801 North Federal Hwy., Suite 302  
Fort Lauderdale, FL 33308  
[www.drgeorgeent.com](http://www.drgeorgeent.com)

Phone: (954) 493-8773

Fax: (954) 493-8807



## SAGE BIRTHDAYS FOR THIS MONTH

The SAGE Board would like to acknowledge the following members whose birthdays are this month as well as any other member whose birthday that we don't have.

If, when you renewed your membership or became a new member you did not give us your birthday, you may call the office and leave the information at 954.634.7219 or e-mail us @ sagesofl@gmail.com.

First Name	Last Name	Birthday	First Name	Last Name	Birthday
Mary-Jane	Cunningham	05/01	Elaine	Conrad	05/20
Joan	Brown	05/04	Lorraine "Pinky"	Luddy	05/20
Diana E.	Llopis	05/05	Charles P.	Bergelt	05/22
Celia	Cogoni	05/06	Walter W.	Nieman	05/22
Jesse G.	Monteagudo	05/06	Charles	Christopher	05/23
C. Daniel	Repik	05/12	Robert	Rebernisek	05/24
Allen	Spieß	05/12	Thomas	Valentine	05/24
Maxine	Lemarr	05/13	Phyllis R.	Foster	05/26
David	King	05/14	Angela	Giella	05/26
Barbara L.	Sahami	05/14	Ralph L.	Papenfuse	05/27
Willis M.	Ross	05/15	Leonard H.	Smith	05/29
Deric	Bownds	05/16	Bob	Maletta	05/30
Frank	Piasecki	05/16	Dale F.	Roland	05/30
Heather	Brooks	05/17	Joseph	Levesque	05/31

### New Members

First Name	Last Name	Date Joined
Michael	Conley	03/14
Carla	Eisenberg	03/14
Charles	Eskridge	03/14
D'Ollonne	Franch	03/14
Alix	Friedman-Byrnes	03/14
John F.	Gregory III	03/14
Nan	Keegan	03/14
Paul	Laflamme	03/14
John	Leblanc	03/14
C. Daniel	Repik	03/14

### 10 Year Anniversaries

First Name	Last Name	Date Joined
Judith	Bowling	03/04

### 15 Year Anniversaries

First Name	Last Name	Date Joined
John L.	Irish	03/99
Robert	Kaminsky	03/99

## SAGE NEEDS YOU!

Please Join or Renew Today.

**NAME:** \_\_\_\_\_ **Birthday: Month** \_\_\_\_\_ **/Day** \_\_\_\_\_

**ADDRESS:** \_\_\_\_\_

**CITY:** \_\_\_\_\_ **STATE:** \_\_\_\_\_ **ZIP:** \_\_\_\_\_

**TELEPHONE:** \_\_\_\_\_ **CELL:** \_\_\_\_\_



MEMBERSHIP APPLICATION

**COMMITTEE INTEREST:** \_\_\_\_\_

**E-MAIL:**

Would you like to receive the

**Would you care to make a tax-deductible contribution to SAGE included with your dues? Yes No**

**CIRCLE ONE: RENEWAL NEW MEMBER**

Please enclose a check in the amount of \$35.00 made payable to SAGE OF SOUTH FLORIDA

**Mail To:** SAGE of South Florida, PO Box 70516, Oakland Park, FL 33307

**SENIOR ACTION IN A GAY ENVIRONMENT**



**ANDREWS DINER**

*"A Family Restaurant"*

Hosts: Angelo, Gerri & Marla

2980 N. Andrews Avenue  
Fort Lauderdale, FL 33311  
954.563.3555

**Hours**

Monday, Tuesday & Wednesday 7 AM - 3 PM  
Thursday & Friday 7 AM - 8 PM  
Saturday 7 AM - 3 PM  
Sunday 7 AM - 2 PM



2228 WILTON DRIVE  
WILTON MANORS, FL 33305

KAREN CARROLL  
JULIE SLATER  
ED FIORENZA  
MARCUS ROWE

EYE EXAMS  
& CONTACT LENS FITTINGS  
BY INDEPENDENT DOCTOR  
OF OPTOMETRY

954.567.3937  
CHICOPTIQUE@AOL.COM

**Show Us Your SAGE card and get a 20% discount!**



**MANDARIN, SZECHUN & CANTONESE FAVORITES!**

*Quality Food at Affordable Prices*

664 N Federal Hwy., Ft Lauderdale, FL 33304  
954-527-0228

CALL FOR A  
**FREE**  
CONSULTATION


# CONFUSED ABOUT THE CHANGES IN MEDICARE?

**Medicare Specialist offering:**


- Low Cost Medicare Supplements
- Part D Prescription Drug Plans
- No Cost Medicare Advantage Plans

**Very Affordable Rates On:**

- Long Term and Home Care Coverage
- Life and Disability Insurance
- Guaranteed Income for Life



**Call Gary Kempler at**  
**954-328-5418**  
**or send an email to**  
**garykempler@ffig.com**







## 30 Minute Men's Health Screening

**Good for the body. Good for the mind.**

Screening includes:

- Blood pressure and pulse oximetry
- Complete blood count
- Complete metabolic profile
- Lipid profile
- Prostate-specific antigen (PSA)
- Testosterone
- Body Mass Index (BMI)
- Vitamin D
- Thyroid (TT3, T4 and TSH)
- Diabetes (A1c)

**Monday to Friday, 7am - 5:30pm**  
**Saturday, 8am – 11am. Walk-ins welcome.**

\$75 flat fee. Screening may be covered by insurance.

**Call 954.279.7946** to speak to the Men's Health Navigator.

Or email **MensHealth@BrowardHealth.org**.

He will assist you with alternative times, insurance verification and any other questions you may have about the screening.

**Fast, convenient, mobile health  
screenings on the new Man Van.**



**BROWARD HEALTH**  
**IMPERIAL POINT**

6401 N Federal Highway,  
Fort Lauderdale, FL 33308

**Visit [BrowardHealth.org/BHIPmen](http://BrowardHealth.org/BHIPmen)** to see a  
list of upcoming events and catch the  
Man Van out in the community.



# SAGE @ LaBamba

*Mexican & Spanish Restaurant*

4245 N Federal Hwy., Ft. Lauderdale

Phone: 954.568.9668

**Thursday, May 15th 6PM**

*6PM Cocktail Hour / 7PM Dinner*

## Your Choice

### Enchilada & Taco Combo

(Cheese Taco & Beef Enchilada with yellow rice & refried beans)

### Palomilla

(Pounded sirloin steak topped with chopped onion & parsley with white rice, black beans & plantains)

### Arroz con Pollo

(Quarter chicken cooked with yellow rice, served with fried plantains, lettuce & tomato)

### Sizzling Vegetable Fajitas

(Cooked onions, fresh bell peppers, tomatoes, green peppers & spices served w/ cheese, guacamole, pico de gallo, lettuce, hot tortillas, chopped tomatoes combined & eaten like a taco)

### Dessert – Flan

Coffee, Iced Tea, Soda

**Eat, Drink and be Merry with SAGE @ LaBamba**

**Members: \$20 Non-Members \$22**



---

LaBamba Mexican & Spanish Restaurant

Paid Reservations must be received no later than 1PM, Monday, May 12, 2014

Members: \$20\_\_\_\_ Non-Members \$22\_\_\_\_ My Phone # \_\_\_\_\_

Name: \_\_\_\_\_ *Entree Choice* \_\_\_\_\_

Name: \_\_\_\_\_ *Entree Choice* \_\_\_\_\_

Name: \_\_\_\_\_ *Entree Choice* \_\_\_\_\_

Name: \_\_\_\_\_ *Entree Choice* \_\_\_\_\_

Mail with payment to:

SAGE

Questions? 954.634.7219

P.O.Box 70516

Oakland Park, FL 33307

*This is a SAGE Sponsored Event*

# SAGE "What CRUISE" for 2014



**Check updated prices with Eric Muhlitner**  
**"Come Sail Away, Come Sail Away, Come Sail Away with..." SAGE**  
**Onboard Princess's Caribbean Princess**

5 Night Western Caribbean: Including Grand Cayman and Cozumel

Departing from Ft. Lauderdale: Monday, October 27, 2014 at 4PM

Returning to Ft. Lauderdale: Saturday, November 1, 2014 at 7AM

## To Book:

Go to [www.ericdavidtravel.com](http://www.ericdavidtravel.com) Website.

Hover on the **Groups** link in the middle near the top of the home page.

Click on **SAGE of South FL** and that will take you to a password link.

The password is lower case, **sage2014**.

Upon entrance to the SAGE group site, you will get a welcome message.

Click on the Terms & Conditions link or Click on the **Cruise Information tab** and read the details about the Sage Halloween cruise

To book the cruise, click on the **Register** tab. Fill in the blanks on the form-anything with a red \* is required to be filled out. **Important:** Scroll all the way down to the bottom of the registration page and click on the **Continue to Step 2** button, the credit card details will be required (and encrypted). When completed, Eric Muhlitner will create the reservation as a held stateroom. Eric will then call and verify your order. You will only have **3 days** to get the deposit down once the reservation has been created.

## **OR**

**Contact** Eric Muhlitner -- Cruise Planners-American Express Travel -- Travel Consultant & Owner

[EMuhlitner@cruiseplanners.com](mailto:EMuhlitner@cruiseplanners.com) -- [www.ericdavidtravel.com](http://www.ericdavidtravel.com)

Toll Free (855) 280-5342 -- Main (704) 322-3677 -- Mobile (704) 763-9865

**(Fares NOT Guaranteed Until You Deposit\*)**

Only 1 Person in a Cabin Must be age 55 or older. Only 1 person in a Cabin Must be a SAGE Member.

Dining Options for ALL: 5:30 PM; 8:00 PM; or OPEN Seating/ Choose Open Seating if you would like to meet with your fellow SAGE members for a drink and then have dinner together.

**Below are Per-Cabin SAMPLE FARES as of March 2014**

### **Interior: IF**

Twin beds that make up into a queen-size bed. Refrigerator and TV. Spacious closet. Bathroom with shower. Approximately 163 square feet. **Double occupancy: \$584.90 per person**

### **Oceanview: OF**

Twin beds that make up into a queen-size bed. Picture window (categories E-G obstructed). Refrigerator and TV. Spacious closet. Bathroom with shower. Approximately 158 to 182 square feet. **Double occupancy: \$734.90 per person**

### **Balcony: BD**

Twin beds that make up into a queen-size bed. Balcony. Refrigerator and TV. Spacious closet and desk. Bathroom with shower. Approximately 233 to 285 square feet, including balcony.

**Double occupancy: \$884.90 per person**

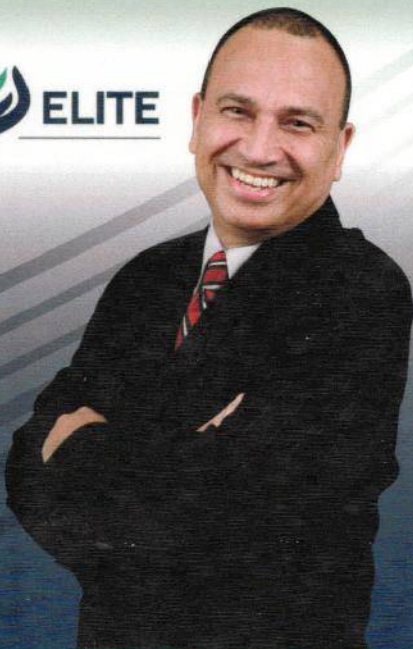
**On Board Credit is \$50 per Cabin**

\*Deposits are 20% of the total combined price excluding taxes: Interiors are \$200 total, Ocean Views are \$220 total and Balcony's are \$320 total. Deposit must be Paid within 3 days of Registering

**Final Payment Must be Paid by Sunday, August 24<sup>th</sup>**

**We highly recommend that you purchase Travel Insurance.**

**Either from Cruise Planners, InsureMyTrip.com, or any other agent you choose.**



**Ernest Olivas, Jr.**  
Owner

## Home Health Care **You can Trust!**

- Free In-Home Consultation
- Affordable Rates
- Long-Term Care Insurance Accepted
- Licensed & Insured

**954.629.1377**

FAX 954.728.9522

- Home Health Aides & CNA's
  - Hourly or Live-in Care
- Bathing, Dressing, Ambulating
- Medication & Care Management
- Light Housekeeping, Doctors Visits, Companionship

EMERALD ELITE SENIOR HOME CARE  
**www.EmeraldEliteHomeHealth.com**

LIC # 30211589

## ...bring the care home

### We accept the following Long-Term Care Ins.:

- |                              |                       |
|------------------------------|-----------------------|
| • AF & L                     | • Marsh               |
| • American Fidelity          | • MetLife Ins. Comp   |
| • American Heritage          | • Mutual of Omaha     |
| • Bankers Life and Casualty  | • National States     |
| • CNA (Continental Casualty) | • Penn Treaty         |
| • CONSECO Senior Health/SHIP | • Transamerica        |
| • Genworth & GE              | • Travelers           |
| • John Hancock               | • U.S. Life           |
| • Kanawha                    | • Washington National |
| • Long Term Care Partners    | • And many more ...   |

### Pay Nothing Out-of-Pocket!

If you have LTC insurance, we accept Assignment of Benefits, so in most cases you pay nothing out-of-pocket!

### Personal Care Services:

Bathing, Dressing, Showering, Toileting, Ambulating, Transferring, Meal Preparation, Shopping and Doctors Visits And Much More!

**"When my wife's condition worsened, Emerald Elite Senior Home Care was there to take care of her"**

Bernie A.-Kings Point

**954.629.1377**

FAX 954.728.9522

**www.EmeraldEliteHomeHealth.com**

EMERALD ELITE SENIOR HOME CARE  
2301 Wilton Drive, Ste. 3 - Wilton Manors, FL 33305



# SAGE Activities Calendar

## MAY 2014

SUNDAY	MONDAY	TUESDAY	WEDNESDAY	THURSDAY	FRIDAY	SATURDAY
				<b>1</b> <b>May Day</b> 1-3PM SAGE Co-Ed Discussion Group @ Pride Center Rm 207	<b>2</b>	<b>3</b> 9:30AM Board Meeting SKOLNICK Ctr. LUNCH & LEARN 12:30 PM Call Office @ (954) 634-7219 for reservation
<b>4</b>	<b>5</b> 11AM - 1PM SAGE On the Border Co-Ed / Alternatives @ Volen Center in Boca	<b>6</b>	<b>7</b> 1 PM Men's Drop In @ Pride Center 4 PM COMPUTER CLUB @ Pride Center	<b>8</b> 12PM SAGE Women's Lunch @ Golden Corral - Tamarac - call Nancy for info (954) 741-1540	<b>9</b>	<b>10</b> 11AM SAGE at Stonewall - Book Club @ Stonewall Library Call Richard Hess 954-568-1592 or Philip Collier 443-614-7135
<b>11</b> <b>Mother's Day</b> 1PM "Ghost" at the Broward Center - Sold Out	<b>12</b> 11AM - 1PM SAGE On the Border Co-Ed / Alternatives @ Volen Center in Boca	<b>13</b> 1PM Camera Club Photo Op - Meet at Pride Center no later than 1PM	<b>14</b> 1 PM Men's Drop In @ Pride Center 4 PM COMPUTER CLUB @ Pride Center	<b>15</b> 1-3PM SAGE Co-Ed Discussion Group @ Pride Center Rm 207 6 - 8 PM SAGE @ LaBamba	<b>16</b>	<b>17</b> <b>Armed Forces Day</b>
<b>18</b>	<b>19</b> 1AM - 1PM SAGE On the Border Co-Ed / Alternatives @ Volen Center in Boca 4:15 PM SAGE Movie "The Adventures of Robin Hood" @ Pride Center - dinner TBD	<b>20</b>	<b>21</b> 1 PM Men's Drop In @ Pride Center 4 PM COMPUTER CLUB @ Pride Center	<b>22</b>	<b>23</b>	<b>24</b> 1PM SAGE Camera Club @ Pride Center - Rm 207
<b>25</b>	<b>26</b> <b>Memorial Day</b> 11AM - 1PM SAGE On the Border Co-Ed / Alternatives @ Volen Center in Boca Men's Singles DINNER @ TROPICS - call John C (954) 933-2963	<b>27</b>	<b>28</b> 1 PM Men's Drop In @ Pride Center 4 PM COMPUTER CLUB @ Pride Center	<b>29</b>	<b>30</b>	<b>31</b>

SAGE of South Florida, Inc.  
 PO Box 70516 Oakland Park, FL 33307  
 Tel: (954) 634-7219 [sagesofi@gmail.com](mailto:sagesofi@gmail.com)

# **SAVE the DATES:**

<b>June 17, 2014, Tuesday</b>	<b>Meet-Up at Peter Pan Diner</b>
<b>Aug 19, 2014, Tuesday</b>	<b>Dinner at Mojo's on US 1</b>
<b>Sept 25, 2014, Thursday</b>	<b>Anniversary Meet-Up at Lester's Diner, Margate</b>
<b>Oct 27 – Nov 1, 2014</b>	<b>SAGE Halloween Cruise on the Caribbean Princess</b>
<b>Dec 14, 2014, Sunday</b>	<b>SAGE Anniversary/Holiday Gala at the Westin on Cypress Creek</b>