

# THE SAGE

The Newsletter of SAGE of South Florida

- JANUARY 2010 -

## Florida's LGBT Seniors Seek Resources, Face Concerns

Joseph Erbentraut, EDGE Great Lakes Regional Editor

**SAGE of South Florida** is one of several organizations that advocate on behalf of the Sunshine State's growing population of LGBT seniors.

Aging is a sensitive subject for any person. It often presents a difficult set of health challenges and life changes as one matures. For gay men and lesbians, however, a number of often unique issues exacerbate these concerns, but they remain taboo because of a failure to admit immunity to the aging process.

In South Florida, which is home to one of the largest populations of LGBT seniors in the country, SAGE (Senior Action in a Gay Environment) is one of several groups working on their behalf...

SAGE of South Florida, which is part of a national network of similar organizations, offers a range of social and educational opportunities...including an annual cruise, discussion groups, dinner and theater meet-ups and a monthly series that features guest speakers and discussions about issues that affect LGBT elders. The organization's membership is booming with more than 400 people.

South Florida SAGE president, Carl M. Galli, said he feels the organization makes a conscious effort to appeal to the varying interests of LGBT seniors, and to meet what he described as their palpable need for social interaction.

"When you start to be our age, it's hard for some of us to find ways to socialize with people of our same attractions," Galli said. "We care about one another. If one of us is ill, we send out a get-well card or visit them. There's an element of kinship and friendship to it which I believe is a very important part of what we do."

Social events aside, serious health threats to the ever-growing numbers of LGBT seniors, who often have a harder time securing insurance benefits than their straight counterparts, persist. People over the age of 50 today make up the fastest-growing segment of those living with HIV. Between the years of 1990 and 2005, Local Department of Health studies report the number of AIDS cases among those over 50 have increased 700 percent, and a large percentage of those infected are gay.

"You don't typically see prevention messages that relate to [seniors] and tell them to get tested," Michael Ruppel of the Tampa-based AIDS Institute said. "They're getting diagnosed while under care for other issues that come with the aging process."

Depression also presents a major problem. It can be linked to increased substance abuse, suicide and other risk factors.

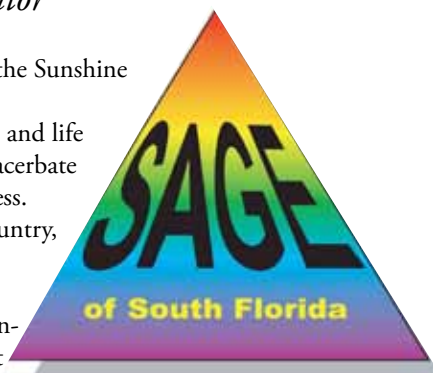
"As lesbians and gay people grow older, they may not have

families and we increasingly see senior citizens dealing with isolation," Equality Florida spokesperson Brian Winfield shared. "This can be dangerous in terms of their physical well-being by not having someone to check in on them and also mentally. It's so important to keep a social network and have friends in order to avoid depression issues."

Indeed, it seems it is truly the simple things -- coffee, conversation or just a bite to eat -- can make all the difference for aging LGBT seniors. When asked what he considered to be SAGE's greatest success Galli recounted his experience with a man who recently came to a drop-in meeting.

"We had someone who was near suicide, the most depressed person I'd ever seen... We took him under our wing and (he) has had a major turnaround," he said. "To see that someone can turn their life around into a more positive outlook on life is more important to me than the number of people coming to any one group."

*(Excerpted from the Sept. 9, 2009 Issue. Used with author's permission. He may be reached @ [jerbentraut@edgepublications.com](mailto:jerbentraut@edgepublications.com))*



**Senior Action in a Gay Environment**

SAGE Message Line - 954.720.0833 - [www.sagewebsite.org](http://www.sagewebsite.org)

## SAGE OF SOUTH FLORIDA, INC.

2040 N. Dixie Highway  
Wilton Manors, FL 33305

**All Copy Deadline:** 8th of the Month

**Message Line:** 954.720.0833

**Email to Editor:** sageoffice@bellsouth.net

**Website:** www.sagewebsite.org

### BOARD MEMBERS

<b>President</b>	Carl M. Galli
<b>Vice President</b>	Ken Goodman
<b>Secretary</b>	Ann Smith
<b>Treasurer</b>	Hank Brooks

### BOARD MEMBERS AT LARGE

Ron Catena, Nancy Drennen, John G. Harris,  
Jean Johnson, Sal Orlando, Betty Ann Priscak

### COMMITTEE COORDINATORS

Advertising	John G. Harris
Archivist	Hank Brooks
Education	Jean Johnson
Lunch and Learn	Sal Orlando
Membership	Ann Smith
Men's Drop-In	Ron Catena (C) Bill Woodward (F) Norm Peters (F)
Men's Singles	John Chandler
Newsletter Editor	Sharron Demarest
Associate Editor	Larry Elwyn
Office	Ken Goodman
Public Affairs	Ron Catena
SAGE Women	Nancy Drennen
Social Activities	Carl M. Galli
Webmaster	Richard Bunyan
Funding (Advisory)	Hank Brooks (C) Nancy Drennen Jean Johnson Ann Smith Robert Rebernik

*Appearance of an advertisement in this newsletter does not constitute endorsement by SAGE of South Florida, Inc. of the service being offered. We thank our advertisers for helping us to pay for printing this newsletter.*

#### SAGE Editorial Policy

SAGE welcomes contributors to this newsletter. An author may request their entry to be "anonymous." However, the submission as received by SAGE must be accompanied by the full name and address of the author. Items will be published at our discretion. If we feel that we cannot publish a submission anonymously, we will contact the author. We reserve the right to edit items for size considerations, clarity or standards of decency.

## Highlights

### SAGE Cover Story

#### Florida's LGBT Seniors Seek Resources, Face Concerns

Pertinent Information	1
SAGE Mission Statement	1
SAGE Classifieds	2
Saturday Luncheon	2
Message from the Board	2
SAGE Members in Need	2
Sharing SAGE with Others	2
Wednesday Men's Drop-In	3
SAGE Women	4
In Memoriam: Mary O'Connor	4
See You at the Movies	5
SAGE Men's Singles Group	5
SAGE Social Notes	6
SAGE at Stonewall Library	6
SAGE Computer Club	7
15 Year Anniversary	7
Welcome New Members	7
SAGE Birthdays	7
SAGE Friendly Support	7
Picture Us	8
"Outing Age 2010"	10
The SAGE Office is Moving	10

## SAGE MISSION STATEMENT

SAGE of South Florida is a non-profit organization for Senior Action in a Gay Environment to enrich the lives of the GLBT senior community through membership inclusive of age, gender, race, nationality and religion. We believe this can be accomplished by sponsoring social alternatives to provide personal interaction, offering educational opportunities to deal with the special needs of aging, and promoting contact with the isolated and homebound persons of our community. SAGE is also an advocate for the concerns and needs of the senior GLBT community at large, providing referral information of community resources and promoting intergenerational communication in the GLBT community.

SAGE was founded in 1994 as a Florida "not for profit" Corporation. (Federal Tax-Exempt status of 501(c)3 allowing tax-deductible donations).

## **MONTHLY BOARD MEETING & SATURDAY LUNCH & LEARN**

12:30 PM, January 2, 2010

### **HERB SKOLNICK COMMUNITY CENTER**

800 S.W. 36th Avenue, Pompano Beach, FL

**RESERVATIONS REQUIRED!!!!!!!!!!!!**

Members with reservations: \$12.00

All others: \$17.00

Doors Open at 12:00PM

If you arrive early, please make yourself comfortable in the lobby and meet and mingle with other SAGE members and their guests.

Reservations must be made by 12:30PM on the Thursday preceding the Luncheon, as the caterer must have the final count.

For reservations, please call the SAGE office @ 954.720.0833

## **MENU**

**House Salad**

**Risotto w/ mushrooms**

**Grilled Salmon**

**(with lemon sauce)**

**(Grilled Chicken available)**

**Sauteed Spinach**

**Peach Tart w/ Blueberry Sauce**

The Honored Speaker will be:

Kristen Hoss

Sawgrass Nature Center

(Real live animals!)

## **A MESSAGE FROM THE BOARD**

*IF YOU RESERVE A PLACE AT THE 'LUNCH & LEARN' AND YOU DO NOT ATTEND, YOU ARE STILL RESPONSIBLE TO SAGE FOR PAYMENT. WE MUST GIVE THE CATERER AS EXACT A COUNT AS POSSIBLE BASED ON YOUR RESERVATION. THE CATERER MUST BE PAID WHETHER OR NOT YOU SHOW UP. WE TRUST YOU TO UNDERSTAND AND DO THE RIGHT THING!*

## **SAGE MEMBERS IN NEED**

Please contact the AADRC (Aging and Disability Resource Center) at 954.745.9779. It is a one-stop center for information and referral services available to seniors and their care-givers in our community.

## **SHARING SAGE WITH OTHERS**

Reconnecting with old friends and meeting new acquaintances is a great part of the SAGE tradition. We invite you to share this tradition by inviting someone new to SAGE to one of our many SAGE sponsored events. Share the camaraderie and support found among SAGE members with others.

When you invite someone new to any SAGE sponsored events and that friend joins SAGE, he or she will become a SAGE of South Florida member for the reduced fee of \$25 for their first year of membership.

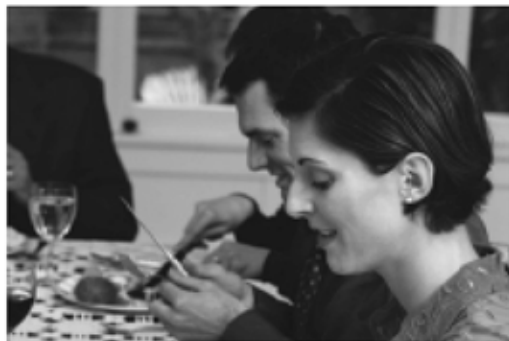
## **SAGE Classifieds**

### **SAGE Advertising Policy**

Our monthly newsletter is partially underwritten by advertising revenue. We have a written fee schedule for various sizes and number of months. An insert, instead of display advertising, is also available for business and organizations at a very reasonable rate. Contact the SAGE office at 954.720.0833 or e-mail at [sageoffice@bellsouth.net](mailto:sageoffice@bellsouth.net) for more information about business cards to full-page ads, classifieds and flyers. We appreciate our business supporters. As members, let's support them as much as possible.

Do you have friends or family who own a business? Ask them to place an ad in THE SAGE.

# So many "Italian style" restaurants...



## But only one "authentic" Primavera!

Lake Como, near Milan, is famous for fine Italian cuisine. It's where chef/owner Giacomo perfected his culinary talent. No wonder his menu at Primavera features selections you would only find in Italy, with the freshest ingredients and classic flair. All served with professional attention. Vero Italiano—true Italian! Join us at Primavera, and you'll taste it.

Dinner 7 Nights 5:00-10:00 PM  
Reservations suggested  
Private room available  
For 10 to 150 guests  
Lunch or dinner



830 E. Oakland Park Boulevard, Fort Lauderdale  
954.564.6363 • www.trueitalian.com

# WEDNESDAY MEN'S DROP-IN



Ron Catena

*Happy New Year!* Can you believe that another year has passed? This past year saw attendance at the **Men's Drop-In** increase steadily. As we start 2010, we now meet at our new location: the **new GLCC/Pride Center**, located at **2040 N. Dixie Highway**. Same time: **Wednesdays**, from **1-3PM**. If you have not attended for a while, come by and enjoy our new digs and enjoy some of the best conversation in our area. If you don't get out much, stop by, meet some new people, have a few laughs, and catch-up on what's been going on around town.

The **15th Annual SAGE Holiday Party** was a rousing success! Held at the **Palm Aire Country Club**, over 100 members attended. Dining, dancing and laughter were the order of the day. The Men's Drop-In was well represented.

The **Annual Men's Drop-In Christmas Party** was well attended and a fun event. A very special thanks to **Bill Woodward**, who once again chaired the party committee -- and a big thanks to all who assisted him.

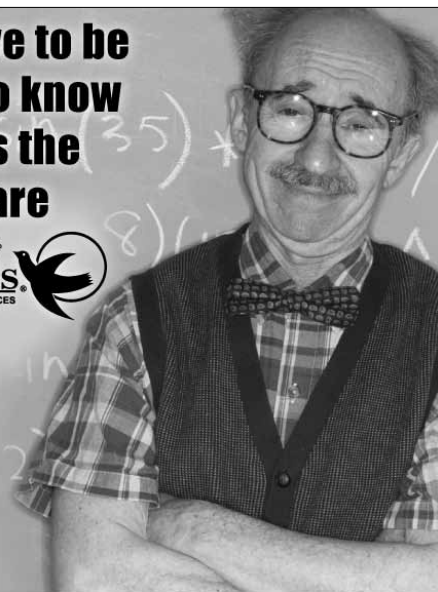
On a sad note, our condolences go out to our own **Dr. Dominic Bisignano**, who lost his partner **Gilles Bertrand** after a short illness. Gilles was **President** of the **FT. Lauderdale PrimeTimers**. He was a very kind and caring man who will be missed by all who had the pleasure of knowing him. **This is a SAGE-Sponsored activity.**

PAID ADVERTISING - PAID ADVERTISING - PAID ADVER

## You don't have to be an Einstein to know who provides the best home care



- Up to 24 Hour Care
- Assistance in Hygiene
- Meal Preparation
- Light Housekeeping
- Errands / Shopping
- Respite Care for Families
- In-Home Fall Prevention
- Select Your Caregiver.



Nursing facilities aren't the only option for care. Visiting Angels in-home care allows your adult patients to continue living in their home while receiving experienced, quality assistance with the activities of daily living.

**954-462-1233**

visitingangels1@bellsouth.net

Lic. #: 302112f

PAID ADVERTISING - PAID AD-

Tired of the same old thing...  
try

**DINER 24**



Open 24 hours Friday & Saturday  
Open till late Sunday thru Thursday

Breakfast Burgers & Sandwiches  
starting at \$2.99 from \$3.89

**NOW OPEN**

301 West Oakland Park Blvd  
(1/2 mile east of I 95 on north side next to McDonald's)

954-765-6349

1941882

# SAGE WOMEN



## Nancy Drennen

As I've said before, the word is out and continues to "go forth" regarding all of the great, caring and fun-loving women who meet the 2nd Thursday of each month at the Ark Restaurant.

Please mark your 2010 calendar accordingly, but if you forget, I will continue to remind you. The Ark is located at 6255 Stirling Road in Hollywood.

We had four first-timers at the lunch this month and they are planning on becoming members of the SAGE Family.

Most of the snowbirds will probably be returning in January and we hope they will be back in time for lunch on Thursday, January 14, 2010 at noon. We want to start the new year right by sharing all the good times that the "Golden Years" have to offer.

I would like to thank each and every one of the members who have made this year such a wonderful experience and say, "HAPPY NEW YEAR!" Contact me for reservations @ 954.741.1540.

**This is a SAGE-Sponsored activity.**



## *In Memoriam*

**Ms. MARY O'CONNOR  
YOU ARE MISSED BY US ALL!**

*One of our dearest Founding Members, and a Past President of SAGE, Ms. Mary O'Connor died suddenly, of natural causes, on December 1, 2009. She was 81, and for all those years she was cherished by all who knew her.*



*Mary is survived by her loving friend, Eileen Lancelli. A Celebration of Mary's Life has been scheduled at the Sunshine Cathedral/MCC at 1PM on Sunday, February 27th. A reception will follow.*

## **"SENIOR ACTION IN A GAY ENVIRONMENT"**

### **MEMBERSHIP APPLICATION**

NAME: \_\_\_\_\_

ADDRESS: \_\_\_\_\_

CITY: \_\_\_\_\_

STATE: \_\_\_\_\_

ZIP: \_\_\_\_\_

HOME PHONE: \_\_\_\_\_

OFFICE: \_\_\_\_\_

CELL: \_\_\_\_\_

E-MAIL ADDRESS: \_\_\_\_\_

BIRTHDAY: \_\_\_\_\_

COMMITTEE INTEREST: \_\_\_\_\_

CIRCLE ONE:

RENEWAL

NEW MEMBER

**PLEASE ENCLOSE A CHECK IN THE AMOUNT OF \$35.00 MADE PAYABLE TO: SAGE OF SOUTH FLORIDA**

**MAIL TO:**

SAGE of South Florida, Inc.  
8333 West McNab Road, Suite 239  
Tamarac, FL 33321

**SAGE NEEDS YOU!  
PLEASE JOIN OR RENEW TODAY**

***For additional information, please call the message line: 954-720-0833***

## SEE YOU AT THE MOVIES

Carl M. Galli & Ken Goodman



Our **January 18, 2010** film is based upon “the most notorious unsolved murder in California history.” **Brian DePalma’s** take on “**The Black Dahlia**” is a visually dazzling Hitchcockian film-noir that takes us into the lives, loves, and homoerotic tensions between its two male leads (**Josh Hartnett**, officer Dwight “Bucky” Bleichert and **Aaron Eckhart**, Det. Lee Blanchard) as two policemen who see their professional and personal

lives fall apart in the wake of their murder investigation -- and their affair(s) with **Scarlett Johansson’s** Kay Lake. With a major Lesbian subplot involving **Hilary Swank** as Madeleine Linscott (an heiress to the campy Linscott family fortune) and **Mia Kirshner** as Elizabeth Short, and a star-turn by **k.d. lang** as a chanteuse in the most beautiful Lesbian supper club in Los Angeles, this was one of the most under-appreciated mainstream movies of 2006.

“The Black Dahlia” was filmed in and around the Alto-Nido Apartments on N. Ivar St. (for our transplanted Californians). From IMDb.com: “**Dante Ferretti’s** set design beautifully evokes the 1940’s; **Vilmos Zsigmond’s** (Oscar-nominated) cinematography enhances the period look; and the voice-over narration has

been pulled from film-noir classics.” It is an interesting, if flawed, look at a glamorous/sometimes-seamy time of high drama and low morals.

The screenplay by **Josh Friedman** is based on a **James Ellroy** novel. “The Black Dahlia” screens at **4PM on Monday, January 18th**, at the **New GLCC/Pride Center**. It is rated “R” for sexual situations, nudity, and violence. (It is only 121 minutes in length, and we’ll have time for dinner afterwards.)

**This is a SAGE-Sponsored activity.**

## SAGE MEN’S SINGLES GROUP John Chandler

The mission of the monthly gathering is to introduce men who are not in a long term relationship with other men who are in the same situation. The purpose of the monthly meeting is to meet new people, promote and develop a network of friendships for support and socializing, and to provide support to those who have lost their partners because of death or the end of a relationship.

The next meeting is on Monday, January, 25th. Join us for cocktails at the bar at 5:30PM. Followed by dinner at 6:30PM at Tropics. Please contact John Chandler @ 954.427.5355 or e-mail @ stonyman4u@aol.com to make your reservation, and don’t forget to wear your “RED SHIRT.”

**This is a SAGE sponsored activity.**

PAID ADVERTISING - PAID ADVERTISING - PAID ADVERTISING

### COME TO US ...

for  
**ALTERNATIVE THERAPIES**

- ✓ PHYSICAL THERAPY
- ✓ ACUPUNCTURE
- ✓ CHIROPRACTIC CARE
- ✓ MASSAGE THERAPY
- ✓ BIOFEEDBACK

**MEDICARE/MOST INSURANCES**

**ADVANCED MEDICAL  
ASSOCIATES & REHAB**

7000 OAKLAND PARK BLVD, SUNRISE, FL 33313

**(954) 572-1099**

**HOME PHYSICAL THERAPY AVAILABLE**

### HIGH COST OF MAILING

The cost of mailing the SAGE Newsletter is getting more and more outrageous, especially since the content constantly increases. Did you know that you can receive your Newsletter via e-mail? By doing so, you will be cutting SAGE costs by almost \$2 an issue. Please help your organization in its quest to be fiscally responsible. Call the SAGE office at 954.720.0833 and express your desire to become an electronic recipient in this electronic age.

# SOCIAL NOTES

Carl M. Galli



As the kids now say: *OMG! What a wonderful way to start the season!* Despite a very tepid early start, our **Holiday Party at the Palm Aire Country Club** turned out to be one of our most successful ever! I was personally heartened and overwhelmed to see **almost 100 members and guests** enjoying the food and festivities, the music

(by **Eclipse**) and the dancing, and even their little gifts.

As I said at the Party, while we make it look easy, putting together an event of this size takes about 6 months of hard work. There are a couple of weeks at the beginning -planning menus and entertainment, and signing contracts. For this I want to thank **Ms. Joyce Schweitzer**, who got the ball rolling. Then there's the drudge work during the last couple of days: shopping for presents and wrapping them, working on seating charts, preparing the rosters, auditing the money, sitting at the reception desk, last minute coordination with the Country Club. (**Ms. Courtney Kowalski** and her staff were always on hand to make things right.) We must also thank the following: **Sal Orlando**, and his partner, and draftee, **Joe Suplit**; my two Johns -- who never turn me down (hmmm): **John Chandler** and **John Gearrity**. Also **Ken Goodman** -- who kept track of the monies and the reservations; and **John Harris** -- who prepared our name tags. **Hank Brooks**, who holds the purse strings, and his partner and draftee, **Leo Glickstein**, who was busy selling last minute raffle tickets. **Ron Catena**, whose wit and charm make him our perfect "official" greeter." **Warren Day**, who helped wrap over 100 presents, and his partner of almost 2 years (and our youngest SAGE Member), **Jay Brundage** -- who was our junior Elf for the day, along with **Duc Nguyen**, helping to pass out gifts to everyone.

Now, for a moment, I want to get a little serious: Despite the economic slump, and rumors to the contrary, while your SAGE is definitely "in the black", we do pay out every month more than we take in from just Membership Fees. So your Board continues to tighten the fiscal reins in some ways. (There will be an annual financial report in the March Newsletter.) You're already experiencing our NEW Newsletter -more beautiful than ever, and coming in at less cost than previously. And this is due in no small part to our new **Editor, Ms. Sharron Demarest**. Hopefully, by the time you read this, we will have moved into our *temporary office space at the new GLCC/Pride Center* -- and this should save us money in the long run. But non-profits always need money to thrive not just to survive. These past few months, some of your Board members were tasked with selling raffle tickets. Your response was overwhelming -- and you all owe yourselves a big round of applause. Congratulations to the **Grand Prize winner, John Salvatore**, who bought his ticket from **Reba**, and is now **\$1000 richer!** (And: If anyone ever wants to donate, please just send a check to the SAGE office, and mark it as a donation.)

The day after the Holiday Party, some of us went to the **Flagler Museum** in Palm Beach, dahlings! While it is always impressive, it is never more so than in the Holiday Season. The tree is spectacular -- and the lighting by the Flagler's youngest descendents absolutely moving. Among the SAGE group were **Nancy Drennen**; **Sharron** and her partner **Inez "Zippy" Pasher**; **Pete Michaelowski**; **Jack**

**Hoppen**; **Rex Coston** and **Walter Wadas**; **my two Johns** (again); **Ken** with his **John** and **Les**; **Hank** and **Leo**; **Ron** and yours truly.

Reservations for our **Annual Picnic at T.Y. Park** (this year on **January 16th**) are going fast. This should be a blast, so get reservations into the office now before it's too late. We hate to leave anyone out, but park rules prevail. Remember, last year's was a sell-out and we had to turn away some people without reservations!

Our **February 28th** showing of **Alfred Hitchcock's "The 39 STEPS"** is really worth seeing to witness theatrical comedy at its finest. But you'll have to see this one on your own since this play in our Broadway Series is already sold-out.

We only have a few tickets left for "**the Original Florida Folies**" on **February 21st**. It's at a modern venue in Coral Springs, and the parking is free. Come on guys and gals: These ladies work their tushies off making sure we have had a great time at their review. And **all their proceeds go to worthy local children's charities**. Those of us who went last year said we wouldn't miss it this year -- and rightfully so. If you like to see chorus girls of whatever age kicking and dancing and singing, in boas and beautiful gowns, then you owe it to yourselves to see this show. And you owe it to the children to support it.

As of this writing, **we only have a couple of tickets left for our March 24th sojourn to "In the Heights"** -- the Tony Award-Winning Best Musical about life in the Brooklyn Heights. I'm sure most of us can catch its drift. But whatever you do: Enjoy!...

## **SAVE the DATES:**

**Feb 14th Sun VALENTINES Luncheon/Dance at "Primavera"** -- Entertainment by "**Little Stevie**" **Silverman** -- 1-4PM -- see flyer this issue

**March 13-14th Sat & Sun -- PrideFest 2010 -- 12-7PM -- Jacob Pastorius Park (Oakland Park)**

**March 24th Wed "In the HEIGHTS" @ Broward Ctr. -- 2PM -- Center Mezzanine: BB: 116 - 144**

**March 28th Sun ANNUAL MEETING & LUNCHEON @ Marriott North -- Gold Coast Room --2-5PM -- see flyer in next month's issue**

## **SAGE AT STONEWALL**

### **Wayne Draper**

***THE MAN WHO KNEW TOO MUCH: Alan Turing and the Invention of the Computer*** by David Leavitt.

Hounded by authorities and peers alike, British mathematician Alan Turing committed suicide in 1954. A groundbreaking thinker in the field of pure math, a man principally responsible for breaking the enigma code used by the Germans during WWII and the originator of the ideas that led to the invention of the computer, Turing was also an avowed homosexual at a time when such behavior flew in the face of both convention and the law. [Amazon.com]

We will meet on January 9, 2010 at 2PM at the Stonewall Library, 1350 E. Sunrise Blvd., Ft. Lauderdale. Any questions, please contact me. Thank you.

**Wayne Draper -- 954.484.8335**

**This is a SAGE sponsored activity.**

## SAGE COMPUTER CLUB

### Ken Goodman

**Please Note: New Venue and Day of the Month:**

The January meeting of the SAGE Computer Club will be at the **New GLCC facility on Dixie Highway on Wednesday, January 13, 2010 at 4PM.** Call for directions if you need them @ 954.720.0833 or the GLCC's switchboard @ 954.463.9005. Check the bulletin board in the front lobby for our meeting location.

Come and learn how to use your computer more efficiently or to see what you have been missing. We discuss all aspects of the personal computer. We discuss Windows XP, Vista, Windows 7, as well as Apple OS/X operating systems. We start by discussing a specific topic of interest to the group and then we allocate time to resolve any issues and answer questions you may have. **This is a SAGE sponsored activity.**

## WELCOME TO OUR NEW MEMBERS

First Name	Last Name	Date Joined
Duc	Nguyen	11/2009
Richard T.	Nolan	11/2009
William E.	Strong	11/2009

## 15 YEAR ANNIVERSARY

First Name	Last Name	Date Joined
Paul	Celendano	11/1994
Gayle	Scott	11/1994

## SAGE FRIENDLY SUPPORT PROGRAM

We'd like to think we are not merely fair weather friends, but people who really care about our SAGE family. If you know of any SAGE member who would appreciate a friendly call, is sick, in the hospital, recently lost a loved one, or just needs a note of cheer, please contact, for women, either Caroline Leto @ 954.925.6288 or Jean Arthurton @ 561.381.3103, or, for men, Leo Glickstein @ 954.427.6877.

**This is a SAGE sponsored activity.**

## PLEASE PATRONIZE OUR ADVERTISERS

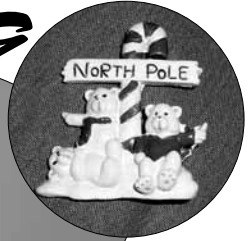
## SAGE BIRTHDAYS FOR DECEMBER 2009

The SAGE Board would like to acknowledge the following members whose birthdays are in January as well as the other members whose birthday this month that we don't have.

If, when you renewed your membership or became a new member you did not give us your birthday, you may call the office and leave the information at 954.720.0833 or e-mail us @ [sageoffice@bellsouth.net](mailto:sageoffice@bellsouth.net).

First Name	Last Name	Birthday
Walter P.	Ambrose	01/01
Shane	Centers	01/03
J F	Millott	01/03
Bill	Nyquist	01/03
C J	Rose	01/03
Hank	Brooks	01/04
Theresa	Gulizia	01/04
Brandy	Carpenter	01/08
Tom	Sheaffer	01/08
Betty J.	Hibbard	01/11
Kyle W.	Mitchell	01/11
Bruce	Todres	01/11
Michael	Wolmetz	01/11
William E.	Strong	01/12
Jim	Griffin	01/13
Larry	Rosenblatt	01/13
Joanne	Weaver	01/13
Alan R.	Sutherland	01/15
Ellwood	Autuori	01/16
Carol	Cukras	01/16
John	Siegfried	01/18
Paul R.	Alpert	01/19
Anthony	Ciance	01/20
Sam	Feldman	01/23
Shirley	Tiano	01/23
Richard	Werner	01/23
Sharon	Smith	01/24
Alan	Latman	01/25
Richard	Schwarz	01/25
Arthur	Williams	01/25
Jim	Gunter	01/26
William	Woodward	01/26
Gail P.	Fund	01/27
Richard	Stern	01/30
Ed	Kelly	01/31

# Holiday Party 2009



MARTIN

[phillipmartin.info](http://phillipmartin.info)



Law Offices  
**Arthur B. Smith, P.A.**

Galleria Professional Building  
915 Middle River Drive, Suite 420  
Fort Lauderdale, Florida 33304  
Phone: 954-564-8844  
Email: ASmith5826@bellsouth.net

Member of the Florida  
and Massachusetts Bar

---

**Trusts**

Revocable, Irrevocable  
and  
Charitable Remainder

**Wills**

Last Will and Testament  
and  
Related Documents

**Probate**

Estate and Trust Administration

**Real Estate**

All Transactions

NOTICE: The hiring of a lawyer is an important decision that should not be based solely on advertisements. Before you decide, ask the attorney to send you free written information about qualifications & experience.

## “OUTING AGE 2010”

**Karen Taylor**  
Director of Advocacy & Training,  
SAGE (US)

“Outing Age 2010” report shines a spotlight on challenges facing millions of lesbian, gay, bisexual and transgender people as they age. Despite recent advances, this report documents widespread discrimination encountered by LGBT elders, and offers substantive policy recommendations.

The National Gay and Lesbian Task Force and SAGE today jointly released “Outing Age 2010: Public Policy Issues Affecting Lesbian, Gay, Bisexual and Transgender Elders”, an update to the groundbreaking Outing Age report issued in 2000. Like its predecessor, Outing Age 2010 presents an in-depth look at public policy issues and challenges facing millions of aging LGBT people in the United States.

The updated report comes on the heels of Health and Human Services Secretary Kathleen Sebelius’ recent announcement of plans to establish the first national LGBT elder resource center. LGBT aging issues have been a focus of the New Beginning Initiative, a Task Force-coordinated collaboration of more than 20 national LGBT organizations moving to promote change within federal agencies to improve the lives of LGBT people. LGBT aging issues have been identified as a priority issue for the Task Force and SAGE.

“For too many years, the needs of the oldest members of our community have been invisible to many of us and ignored by most institutions in our society,” says Rea Carey, executive director of the National Gay and Lesbian Task Force.

## The SAGE Office is Moving


**Kenneth Goodman**

The SAGE Office will finally be moving into the new GLCC Center on Dixie Highway in Wilton Manors. Since the second floor of Building A is not available (the leased location of the office) until the elevator is installed, we will temporarily be in Building B (the back building), off the lobby area. The move will occur during the month of December and we hope to be there, up and running, by the time you read this article. Our plans are to have the current SAGE Office telephone number forwarded to our new number, but if we are unable to do this you can call the GLCC and the operator should be able to transfer the call to us. While we will be getting a Post Office box for all our mail (and will have it on flyers and in next month’s issue), our new physical address will be as follows:

**SAGE of South Florida, Inc.**  
2040 N. Dixie Highway  
Wilton Manors, FL 33305.

We are hoping to keep our e-mail and website the same but we will let you know as soon as we can.

**PAID ADVERTISING - PAID ADVERTISING - PAID ADVERTISING -**



*Sunshine Cathedral*  
A METROPOLITAN COMMUNITY CHURCH  
AFFILIATED WITH THE CENTER FOR PROGRESSIVE CHRISTIANITY

**Sharing the Light with the World**

1480 SW 9th Avenue  
Fort Lauderdale FL 33315 USA  
Grant Lynn Ford, CANON PASTOR

OFFICE 954-462-2004  
FAX 954-462-7070  
TOLL-FREE 877-750-6390

**PAID ADVERTISING - PAID ADVERTISING - PAID ADVERTISING - PAID ADVERTISING - PAID ADVERTISING**

**LUNCH DAILY 11am-3pm with Salad Bar & Soup Station**

**Tropics SIDECAR** We take Tropics Chips 11am-close

**Celebrating 15 Years!**

**ENTERTAINMENT 7 NIGHTS A WEEK!**

**SUNDAY BRUNCH** only \$16<sup>95</sup> • **MONDAY 10 Choices** for \$11<sup>95</sup>  
**TUESDAYS 2-for-1 Entrees** • **WEDNESDAY PRIME TIME** \$10<sup>95</sup>  
**THIRSTY THURSDAY** with Tony & Gloria 2-for-1 Open to Close at the Bars Only  
Dinner Special—Buy Any Entree—Get Soup or House Salad On Us!  
**FRIDAYS & SATURDAYS** Late Night on the Drive  
**HAPPY HOUR 2-for-1 All Brands SUNDAY-FRIDAY 11am-9pm, SATURDAY 11am-8pm**



**Tropics**  
Proudly serving South Florida's Gay & Lesbian Community since 1994  
RESTAURANT  
PIANO BAR  
CABARET

**COMMUNITY CHOICE AWARDS**  
3 Time Winner  
Restaurant of the Year

**2000 WILTON DRIVE (N.E. 4TH Avenue)**  
**WILTON MANORS, FL 33305**  
**PH: 954-537-6000 • FAX: 954-563-4269**  
**www.tropicsftl.com**  
**Dinner Reservations Suggested**

# ART & DESIGN CAFÉ

Your Destination for an Art, Design & Bistro Experience

*Scrumptious Salads  
Delicious Soups  
Gourmet Dinners  
Fine Wines & Beers*

**Ginger Coopersmith  
Vincent Byrnes**

**2724 E. Commercial Blvd.  
Ft. Lauderdale, FL 33308**

**(954) 491-1007 P**

**artanddesigncafe@yahoo.com**



## ANDREWS DINER

*"A Family Restaurant"*

Hosts: Angelo, Gerri & Marla

2980 N. Andrews Avenue  
Fort Lauderdale, FL 33311  
954.568.8555



- COCKTAILS • CATERING •
- BANQUET FACILITIES •
- BAKERY ON PREMISES •

1218 E. OAKLAND PARK BLVD. FORT LAUDERDALE, FL 33334  
954.565.7177

WWW.PETERPANDINER.COM

## JOIN THE DOLPHIN DEMOCRATS TODAY

### Support The Party That Supports You



Membership is only \$30, \$50 for a couple and \$25 for seniors. We meet every 2nd. Wednesday, 7:30 pm at the GLCC, 1717 N. Andrews Ave. in Fort Lauderdale.

To join, visit our website at [www.dolphindems.org](http://www.dolphindems.org), call 866-478-8262 for more info, come to our next meeting to learn more, or tear off and return this form:

**Please send me a membership brochure:**

Name \_\_\_\_\_

Address \_\_\_\_\_

City/State/Zip \_\_\_\_\_

**Please clip and return to:**

Dolphin Democrats, PO Box 7437, Ft. Lauderdale FL 33338



## FRED HUNTER'S

SINCE 1890  
FUNERAL SERVICE • CREMATION • CEMETERIES

718 S. FEDERAL HIGHWAY, FORT LAUDERDALE

6301 TAFT STREET, HOLLYWOOD, FLORIDA

2401 S. UNIVERSITY DRIVE, DAVIE, FLORIDA

MARK VAN REES, MANAGING DIRECTOR

RON KELLEY, MANAGING DIRECTOR

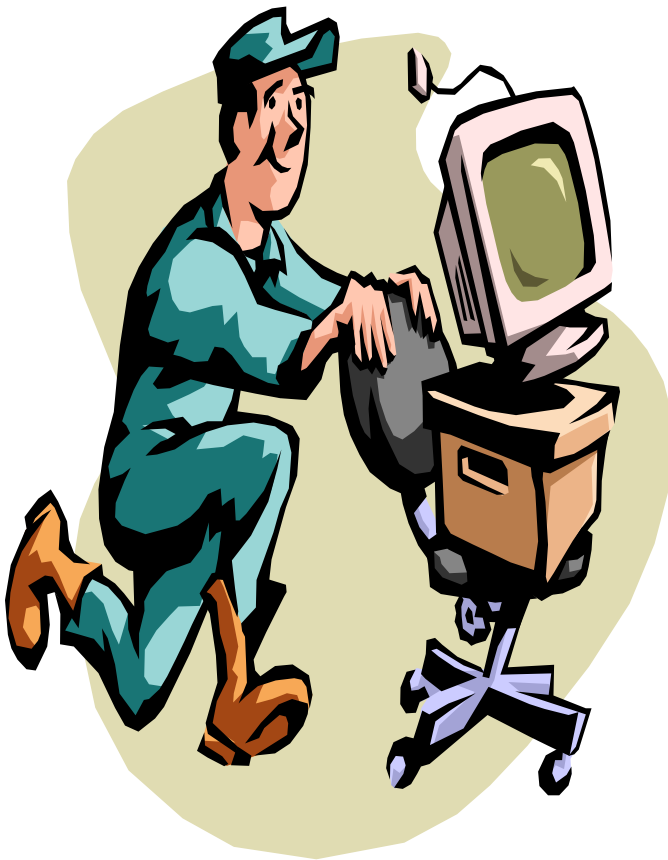
FAMILY OWNED AND OPERATED  
FUNERAL HOMES IN FORT LAUDERDALE,  
HOLLYWOOD, DAVIE/COOPER CITY,  
AND  
HOLLYWOOD MEMORIAL GARDENS CEMETERY

HOLLYWOOD, FLORIDA

954-527-1550

WWW.FREDHUNTERS.COM

# SAGE has Moved



**Date:** 12/22/2009

**Location:**

**GLCC/Pride Center @  
Equality Park on Dixie  
Highway in Wilton Manors**

**Address:**

**SAGE of South Florida  
2040 N. Dixie Highway Bldg B, Suite 1  
Wilton Manors, FL 33305**

**Mailing Address:**

**SAGE of South Florida  
PO Box 70516  
Oakland Park, FL 33307**

**New E-Mail:**

**sagesofl@gmail.com**

**Contact: (954) 634-7219**

# The 6th Annual Southernmost AIDS Ride

How will you participate?

RIDE \* CREW \* SPONSOR \* DONATE

**TheSmartRide.org**

866.696.7701



## The 6th Annual Southernmost AIDS Ride

Ride

Miami to Key West  
January 8 - 9, 2010



*"Never doubt that a small group of thoughtful committed citizens can change the world; indeed, it is the only thing that ever has" - Margaret Mead*

**2 DAYS**

**165 MILES**

**500+ PARTICIPANTS**

**100% TO CHARITY**

**ONE AMAZING FEELING**

**TheSmartRide.org**

# AN OLD FASHIONED SAGE PICNIC

Gather together on **SATURDAY, JANUARY 16<sup>th</sup>, 2010**

and share some **GOOD VIBRATIONS** at **T.Y. Park**

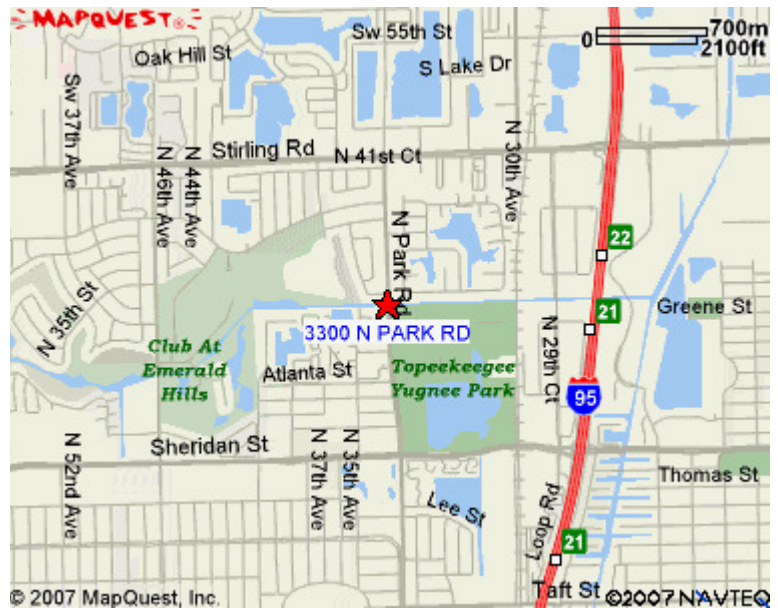
*T.Y.=Topeekeegee -Yugnee means "meeting or gathering place" in Seminole*

*A repeat of last year's sell-out!*

*Catered by the Company Picnic Company*

## **FABULOUS STAGECOACH MENU:**

**HICKORY SMOKED 1/4 BBQ CHICKEN, JUICY & TENDER FRESH GROUND FLAME BROILED BLACK ANGUS HAMBURGERS, CHARGRILLED JUICY JUMBO ALL BEEF HOT DOGS** -all with GARDEN FRESH LETTUCE, TOMATO, ONION & PICKLE, COUNTRY **BBQ BAKED BEANS, BUTTER BRUSHED CORN ON THE COBB, TROPICAL FRUIT SALAD, NEW YORK DELI-STYLE POTATO SALAD, & GREEN GARDEN SALAD WITH DRESSING.** Fresh-Baked **LAYER CAKE** with **SAGE LOGO** or Sugar-Free **DESSERT** (on request), all with **BEVERAGES INCLUDING: PEPSI, DIET PEPSI, SIERRA MIST, ICED TEA, LEMONADE and WATER**



**T.Y. Park Pavilion #4 -on the lake**  
**3300 N. PARK RD., Hollywood, FL. 33021**  
**just West of I-95 and Sheridan St. (954) 985-1980**

**TIME: 12:30PM - 4:30PM**

**Pricing: \$15.00 @ Members\* or \$20.00 @ Non-Members\***

***\*As Always Price Does not include the Nominal Park Admission Fee***

***Bring a chair or a chaise, some board games, and, most of all, A GOOD MOOD***

***Reservations close No Later Than Wednesday, January 13<sup>th</sup> - NO REFUNDS***

***If \* "NO RESERVATION" You WILL Pay \$5 More P/P at the Park if room is available***

## **2010 SAGE Picnic at T.Y. PARK**

\_\_\_ MEMBERS @ \$15.00 \_\_\_ Non-MEMBERS @ \$20.00 My Phone# \_\_\_\_\_

NAME: \_\_\_\_\_ NAME: \_\_\_\_\_

NAME: \_\_\_\_\_ NAME: \_\_\_\_\_

**Mail to SAGE at: P.O. BOX 70516, Oakland Park, FL 33307**

**Questions? Call the SAGE Office at: (954) 720-0833**

**A SAGE Sponsored Activity**

**SAGE VALENTINES LUNCHEON & DANCE at *PRIMAVERA***

830 East Oakland Park Blvd., Ft. Lauderdale, FL. 33334

(954) 564-6363

**SUNDAY, February 14, 2010 1PM - 4PM**



**1PM - 2PM: Seating and Mixer**

**2PM - 3:30PM: MAIN MENU**

***Plated APPETIZER SAMPLER of:***

**Eggplant in crust, Mushroom Strudel, Roasted Peppers & 4 Cheeses in Pastry  
SALAD Course: Tomato and Mozzarella**

***ENTREE' Choice of one from:***

**Bass Fillet Oreganata with Fresh Tomato Sauce  
Veal Scaloppini Piccata in Lemon & Chardonnay Sauce  
Chicken Scaloppini Saltimbocca (topped with Prosciutto) in Marsala sauce  
Butternut Squash Ravioli with Light Butter and Sage Sauce (\*no pasta side)  
*(with Fresh Rolls, Chef's VEGETABLE & \*PASTA Side)***

**3:30 PM: DESSERT COURSE:**

**Saint Honore' Cake (Sugar-Free Dessert Available Upon Request)  
Beverages: Coffee/ Tea/ Iced Tea/ De Café/Soda**

**2 Glasses of Wine or Beer per person, with SAGE Ticket -Compliments of Chef Giacomo**

**For Your Listening & Dancing Pleasure: from Tropics "Little Stevie Silverman"**

**Pricing: \$30.00 @ for MEMBERS or \$35.00 @ for NON-MEMBERS NO REFUNDS!  
NO DOGGY BAGS! IF YOU CANNOT MAKE IT, PLEASE CALL THE OFFICE & SEND SOMEONE IN YOUR PLACE.**

**Reservations Close: NO LATER THAN Wednesday, February 11, 2010**

**\$10 More p/p at Door without Reservation if Seating is Available**

**SAGE VALENTINES DINNER & DANCE at PRIMAVERA RESTAURANT**

**MEMBERS @ \$30.00 & NON-MEMBERS @ \$35.00 My Phone # \_\_\_\_\_**

**Name: \_\_\_\_\_ Choose One: Veal \_\_\_ Chicken \_\_\_ Bass \_\_\_ Ravioli \_\_\_**

**Name: \_\_\_\_\_ Choose One: Veal \_\_\_ Chicken \_\_\_ Bass \_\_\_ Ravioli \_\_\_**

**Name: \_\_\_\_\_ Choose One: Veal \_\_\_ Chicken \_\_\_ Bass \_\_\_ Ravioli \_\_\_**

**Mail with Payment to SAGE at: P.O. BOX 70516, Oakland Park, FL 33307**

**Questions? Call the SAGE Office at: (954) 720-0833**

**A SAGE-Sponsored Activity**

# SAGE JAN 2010 Activities Calendar

Sun	Mon	Tue	Wed	Thu	Fri	Sat
					1	2 <b>Board Meeting</b> 9:30AM SKOLNICK Ctr. <b>LUNCH &amp; LEARN</b> 12:30 PM Call SAGE Office @ (954) 634- 7219 for Reserv.
3	4	5	6 1 PM <b>Men's Drop In</b> @ GLCC back bldg	7 <b>SAGE Women's Lunch</b> at ARK 12 PM	8 <b>Smart Ride 6</b> Begins - SAGE is sponsoring Pit Stop #5 - Miami - Key West Bike Ride spon- soring Aids Charities	9 <b>BOOK BUNCH</b> - Discussion @ Stonewall Library (Sunrise Blvd) - 2 PM <b>Smart Ride 6</b> ends - Miami-Key West Bike Ride for Aids Charities
10	11	12	13 1 PM <b>Men's Drop</b> <b>In</b> @ GLCC back bldg <b>COMPUTER CLUB</b> @ GLCC back building. 4 PM Call Ken Goodman 954-969-1576	14	15	16 <b>SAGE Picnic</b> @ TY Park-Pavilion #4 - 3300 N. Park Rd, Holly- wood, FL 33021-(W of 95 & Sheridan St)-12:30 - 4:30 PM
17	18 SAGE Movie "THE <b>BLACK DAHLIA</b> " - 4 PM @ GLCC back bldg- dinner after TBD	19	20 1 PM <b>Men's Drop In</b> @ GLCC back bldg	21	22	23
24/31	25 <b>MEN's SINGLES DIN-</b> <b>NER</b> @ TROPICS - 6:30 PM - call John C @ (954) 427-5355	26	27 1 PM <b>Men's Drop In</b> @ GLCC back bldg	28	29	30

# ***SAVE the DATES:***

- Feb 14th Sun** VALENTINES Luncheon/Dance at “Primavera” -Entertainment by “Little Stevie” Silverman -1-4PM
- Feb 15th Mon** **Movie** at New GLCC: “For a LOST SOLDIER” - Male content - 4 PM -Dinner follows
- Feb 21 Sun** “Original Florida Follies” @ Coral Springs Performing Arts Ctr. - 1:45 PM - SOLD OUT
- Feb 28 Sun** “Hitchcock’s the 39 Steps” @ Parker - 2 PM - SOLD OUT
- March 6 Sat** SAGE Food Drive for BROWARD PANTRY @ Lunch & Learn
- March 10 Wed** SAGE Food Drive @ Men's Drop-In
- March 11 Thurs** SAGE Food Drive @ SAGE Women's Luncheon
- March 13th-14th Sat & Sun -**  
**PrideFest 2010** -12-7PM -Jaco Pastorius Park (Oakland Park)
- March 24th Wed** “In the HEIGHTS” @ Broward Ctr. -2PM -SOLD OUT
- March 28th Sun** SAGE ANNUAL MEETING & LUNCHEON /DANCE & VOTE @ Marriott North - Gold Coast Room - 2 - 5 PM - Entertainment by Jennifer McClain