

THE SAGE

The Newsletter of SAGE of South Florida

"SENIOR ACTION in a GAY ENVIRONMENT"

FEBRUARY 2007

HAPPY VALENTINE'S DAY! WE ARE HAVING A PARTY AND IT'S NOT JUST FOR COUPLES SO...

Mark your calendar now and call the office for your reservations for Sunday, February 11, at the Palm Aire Country Club. Too many of our dear members say "it's just for couples." Well, that IS JUST NOT TRUE. It's for everyone and I EXPECT TO SEE YOU THERE!

Why do we celebrate Valentine's day? There are several legends about this mysterious saint. One legend contends that Valentine was a priest who served during the third century in Rome. When Emperor Claudius II decided that single men made better soldiers than those with wives and families, he outlawed marriages for young men, his crop of potential soldiers. Valentine, realizing the injustice of the decree, defied Claudius and continued to perform marriages for young lovers in secret. When Valentine's actions were discovered, Claudius ordered him put to death.

Other stories suggest that Valentine may have been killed for attempting to help Christians escape harsh Roman prisons where they were often beaten and tortured. According to one legend, Valentine actually sent the first valentine greeting to himself. While in prison it is believed he fell in love with his jailer's daughter who visited him. Before his death, it is alleged that he wrote her a letter which he signed "From Your Valentine," an expression that is still used today. Although the truth behind the Valentine legend is murky, the stories certainly emphasize his appeal as a sympathetic, heroic, and

most importantly, romantic figure. So come out and celebrate with your fellow SAGE members.

This is a good time to reach out to our friends who are not members and tell them about the benefits of being a SAGE member. I just heard a beautiful story about someone moving to south Florida who was alone and felt very lonely. He heard about SAGE, came to a meeting and received a warm welcome from our members. He realized that many people from various areas had probably felt the same as he before joining SAGE and making new friends. We are an organization that is here for all people. You would be surprised how many lonely people are out there just waiting for an invitation to join an organization like ours.

This is why it's so important that our members keep their memberships current and paid. It's not just for you but it's for the people

coming behind us. SAGE is a 501(c)3 not-for-profit organization and we depend on your membership dues to keep us moving successfully forward. We want to be here for the next generation and hopeful that one day there will be a SAGE in every city so as we travel we can always look up a SAGE and feel right at home. Thank each of you for your continued support. ■

Verla Jean Johnson, President

"We are all citizens of history" – Clifton Fadiman, 1904-1999

Pertinent Information	page 2	Curtain Up!	page 4	Get Your Flu Shots	page 6
SAGE Classifieds	page 2	Saturday Luncheon	page 4	Men's Singles Group	page 7
Vice President's Message	page 2	Welcome New Members	page 4	Book Bunch News	page 7
SAGE Women In Action	page 2	SAGE Summary Balance and Summary Profit & Loss	page 5	Men's Wednesday Drop-In	page 7
Monthly Movie	page 3	Co-Ed Drop In	page 5	Membership Application	page 9
Bereavement Support Group	page 3	SAGE Birthdays	page 6	It's Election Time	page 10
Friendly Visitor Program	page 3	Social Notes	page 6	SAGE January Luncheon	page 11
Healthy Heart Checklist	page 3				

Highlights . . .

SAGE of South Florida, Inc.
8333 West McNab Road, Suite 239
Tamarac, Florida 33321

All Copy Deadline: 8th of the month
Message Line: 954-720-0833
Email to Editor: sageoffice@bellsouth.net
Office Fax: 954-720-9590
Website: www.sagewebsite.org

BOARD MEMBERS

President Jean Johnson
Vice President Ken Goodman
Secretary Betty Priscak
Treasurer Hank Brooks

BOARD MEMBERS AT LARGE

John Gearrity, Sal Orlando, Jan Kronholm, Sandy Darrall, Ann Smith, Michael Di Paola, Carl Galli

COMMITTEE COORDINATORS

Newsletter Editor Michael Di Paola
Newsletter Mailing Ernest L. Oldenbusch
Office Manager Ken Goodman
Education Bob Tomasulo
Membership Ann Smith
Social Activities Carl M. Galli
Public Relations Ann Smith
Saturday Social Sal Orlando
Friendly Visitors Sandy Darrall
Men's Drop-In Norm Peters
Men's Singles Wayne Morris
Archivist Betty Priscak
Bereavement Group Mark Flanagan
Volunteer Coordinator Jan Kronholm
Webmaster Richard Bunyan

Appearance of an advertisement in this newsletter does not constitute endorsement by SAGE of South Florida, Inc., of the service being offered. We thank our advertisers for helping us to pay for printing this newsletter.

SAGE Classifieds

SAGE ADVERTISING POLICY

Our monthly Newsletter is partially underwritten by advertising revenue. We have a written fee schedule for various sizes and number of months. An insert, instead of display advertising, is also available for businesses and organizations at a very reasonable rate. Contact the SAGE office at 954-720-0833 or E-Mail at sageoffice@bellsouth.net for more information about business cards to full-page ads, classifieds and flyers. We appreciate our business supporters. As members, let's support them as much as possible.

VICE PRESIDENT'S MESSAGE

This month I would like to talk to you about your SAGE Board's desire to support our members. Sometimes we hear way after the fact from a member that we were not there for them in a time of need. Your Board and fellow members would like to support you in a time of need but we have to know about it. If one of the Board members or the office is called with information about an illness or hospitalization, we will try to get our Friendly Visitor Program in touch with you. Also, if you are homebound and can't get around we will try to have someone visit you - and if not possible, at least contact you so we can try to support you at a critical time. So, please let us know and we will respond.

If you have not taken a look at the website recently you should. Our new webmaster is doing a fantastic job and we are trying to keep it up to date. If for any reason you lose or throw your newsletter away with the flyers and you need them, you can now get them on the SAGE website.

Just a reminder, we are in the planning stages of trying to put on a talent show (ShowTime), sometime in November. Several volunteers have already stepped forward to coordinate and perform in the show. We need many more volunteers including performers, advertising people, stage hands, set designers, etc. If you are interested in participating, please call the office or send us an e-mail and you will be contacted by one of the coordinators.

If you have a concern or suggestion you may call, e-mail, or just talk to us at any event. You can call the SAGE office at 954-720-0833 or e-mail us at sageoffice@bellsouth.net. Feel free to visit the SAGE website at www.sagewebsite.org. ■

Ken Goodman, Vice President

SAGE WOMEN IN ACTION

SHIRLEY'S GIRLS LUNCHEON

The February 14th meeting will be at Jean Arthurton's house in Delray. The luncheon will be a pot-luck, therefore, please call Jean at 561-381-3103 so that food coordination can be made. **This is a SAGE sponsored activity.** ■

MOVIE, LUNCH, DISCUSSION GROUP

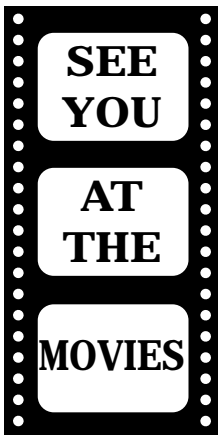
The group will meet on February 20. The movie to be discussed will be decided after the 2nd Wednesday's luncheon. Call Nancy Drennen at 954-741-7540, or Sandy Darrall at 305-895-9461 for more information. **This is a SAGE sponsored activity.** ■

Senior Homecare By Angels.

Select Your Caregiver!

- Up to 24 hour care
- Meal Preparation
- Errands/Shopping
- Hygiene Assistance
- Light Housekeeping
- Respite Care for Families
- Rewarding Companionship
- Experienced Caregivers
- Affordable Rates
- We respond!





with Carl Galli and Ken Goodman

Valentine's Day is almost here! Love is in the air! And now it's time for something . . . queer. Well, that can certainly be said of our February movie selection: "*Hedwig and the Angry Inch.*" It's touching and funny, and sad and comedic - and a musical! **John Cameron Mitchell** stars in the self-directed 2001 movie version of his award-winning off-Broadway play: A transsexual punk rock "girl" from East Berlin tours the U.S. with her rock band,

telling the story of her life, and following the ex-boyfriend/bandmate who stole her songs. Don't miss this one. It's a bit ribald - very LGBT-life-affirming. Also stars **Michael Pitt** (he played Donny in "Bully"), as Hedwig's beautiful androgynous young boyfriend; and **Miriam Shor** (she plays Becca on TV's "Big Day") as a male bandmate. (Remember, nothing is what it seems!)

Meet us at the **GLCC** on the **Third Monday (February 19th) at 4:00 PM**. Popcorn will be served. And afterwards we will go to "**Vincent's**" for their \$9.99 pasta special *This is a SAGE sponsored activity.* ■

GAY COMMUNITY BEREAVEMENT SUPPORT GROUP

The Gay Community Bereavement Support Group's mission is to provide a safe and supportive atmosphere for those individuals who are or have been experiencing grief and the loss of a loved one. Group discussion and exercises contribute to and provide an opportunity for individuals to build a foundation that will assist them in "collecting their thoughts" and focusing on how to cope with their feelings and emotions. Our primary goal is to have group members take a more proactive role in recognizing and accepting their way through the bereavement process and reclaiming their lives. The Group meets every Sunday from 2:00 PM - 4:00 PM at the Gay & Lesbian Community Center. Facilitators are: Daniel C. Lamberti, Marc Kepner, and Marc Flanagan. *This is a SAGE sponsored activity.* ■

SAGE FRIENDLY VISITOR PROGRAM



We are not just fair weather friends, but people who really care about our SAGE family. If you know of anyone that needs a friendly call, is sick, in the hospital, recently lost a loved one, or just needs cheering up or needs a ride to one of our SAGE sponsored functions or activities, please contact Sandy Darrall at (305) 895-9461 so that arrangements can be made.

Women of SAGE who are in need of a visit (in home or hospital/rehab) or simply would welcome a friendly call, please contact Caroline at (954) 925-6288. She will try to fill your request with a SAGE volunteer. *This is a SAGE sponsored activity.* ■

A VALENTINE'S DAY CHECKLIST

Does your sweetheart have a healthy heart?

- Doesn't smoke** and avoids secondhand smoke.
- Gets 30 to 60 minutes of brisk activity every day.** This doesn't have to be in a gym. Housework, chopping wood, and even washing the car count as an activity.
- Blood pressure below 120/80.** Between 120/80 and 139/89 try to lower with diet and activity. 140/90 or above may need treatment with medication.
- Cholesterol:** LDL less than 100 optimal; HDL 60 or higher optimal, 40-59 normal, less than 40 high risk and may need treatment. Triglycerides less than 150. Limiting saturated fats can lower LDL. Exercise may increase HDL. Restrict alcohol and sugar to lower triglycerides.
- Fasting blood sugar below 100mg.** Blood sugar of 100-125 increases your risk of diabetes, and 126 or higher on two different days means you may have diabetes, another risk factor for heart disease.
- Waist size:** less than or equal to 40" for men; less than or equal to 35" for women.
- Controls stress** through meditation, laughter, pets, hugs, and other enjoyable activities.

Sources: The National Heart, Lung, and Blood Institute; American Heart Association

CURTAIN UP!

by Sandy Darrall

Gable Stage – www.gablestage.org or call (305) 445-1119 for reservations. It is located beside the famous Biltmore Hotel. *Fat Pig* by Neil LaBute, February 24 - March 25. If the woman that you love is bright, funny and sexy but happens to be a plus size, how many insults can you hear before you stand up and defend her? Single tickets \$35.00, Thursday, 8:00 PM and Sunday, 7:00 PM. Friday and Saturday \$40.00, 8:00 PM.

Actor's Playhouse – 280 Miracle Mile, Coral Gables, (305) 444-9293. Through February 11. *I Love You Because* explores the rules and nuances of romance and learning how to love someone, not in spite of their differences, but because of them. Wednesday-Sunday with Wednesday and Sunday matinees. \$37.50 - \$45.00 depending on performance time.

New Theatre – 4120 Laguna Street, Coral Gables, (305) 443-5909. Through February 11. Tickets \$30 for Thursday. Friday-Sunday \$40. Showtimes: Thursday-Saturday 8:00 PM, Sunday 1:00 PM. *Sin Full Heaven*. A world premiere by Ricky Martinez. The play is a gothic drama of an overbearing tyrant and his daughter, who he confines to his sugarcane plantation.

The Public Theatre of South Florida – 6501 W. Sunrise Boulevard, Ft. Lauderdale (at the Soref JCC), (954) 537-3648. Tickets \$20.00 for seniors. Through February 4, *Kiss of the Spider Woman*, the amazing play upon which the hit movie and musical are based. (I saw it on opening night and what a wonderful play! It received a standing ovation. Make sure you go and see it.)

Mosaic Theatre – American Heritage Center for the Arts, 12200 West Broward Boulevard, Plantation, (954) 577-8243. *Glen Garry Glen Ross* by David Mamet. February 15 - March 4. Thursday-Saturday, 8:00 PM, also Saturday 3:00 PM and Sunday 2:00 PM. This scalding comedy took Broadway and London by storm and won a Pulitzer Prize. This is a tale of cut-throat competition among real estate salesmen.

Palm Beach Dreamworks, 322 Banyan Boulevard, West Palm Beach, (561) 514-4042. *Quartet* by Ron Harwood, reunites four aging singers at a home for retired opera performers. The most celebrated of the former singers, who is divorced from one of the men refuses to sing. The show must go on and does in a most amusing way.

DON'T FORGET THE MORE THEATER YOU SEE THE BETTER YOUR LIFE WILL BE. Have a great month! ■

MONTHLY MEMBERSHIP MEETING & SATURDAY LUNCHEON / SOCIAL

12:30 PM, FEBRUARY 3, 2007

HERB SKOLNICK COMMUNITY CENTER
800 S.W. 36th Avenue, Pompano Beach, FL

MENU:

Special House Salad

(Romaine hearts & more with vinaigrette on the side)

Veal Stuffed Chicken Breast

(with diced tomato basil sauce)

Green Beans

Dessert: Eggless Vanilla Custard with Berries

RESERVATIONS REQUIRED!!!!!!!!!!!!

Members with reservations, \$8.00

Guests and Members without Reservations, \$10.00

Doors open at 12:00PM

(if you arrive early please be prepared to wait in the lobby)

Call the Message Hotline, 954-720-0833 or
Reserve via e-mail: sageoffice@bellsouth.net

WELCOME TO OUR NEW MEMBERS

Deric Bownds
Francis Damien
Lay Lacroix
David O'Kurland
Garry Rafferty

5 YEAR ANNIVERSARY

John Foran
Richard Langhorn
Francis McFadden
James Smith

10 YEAR ANNIVERSARY

Jean Arthurtun
William Coffee
Ray Drakeoff
Richard J. Jannotti
Gloria Key
Caroline Leto
Charles J. Lowry
Joanne McKenna
Michael Menichella
Elaine C. Murphy
Herbert Reis
Ted Singer
Michael Wolmetz

THANKS FOR JOINING SAGE

SAGE OF SOUTH FLORIDA, INC.

SUMMARY BALANCE SHEET AS OF DECEMBER 31, 2006

CURRENT ASSETS:		
Cash in Banks	16,001	
Certificats of Deposit	<u>60,000</u>	
Total		76,001
OTHER ASSETS:		
Prepaid Expense	500	
Security Deposits	<u>500</u>	
Total		<u>1,000</u>
TOTAL ASSETS		<u>77,001</u>

SUMMARY PROFIT AND LOSS YEAR ENDED DECEMBER 31, 2006

INCOME:		
Endowments	75,000	
Advertising	5,362	
Donations	1,754	
Fund Raising	4,049	
Membership Dues	11,730	
Raffles	1,802	
Sundry	<u>1,219</u>	
Total		100,916
EXPENSES:		
Advertising	2,004	
Awards & Honors	372	
Charity	990	
Insurance	2,085	
Taxes and Licenses	266	
Newsletter	14,886	
Office Expense	4,062	
Postage	2,452	
Pridefest	675	
Rent & Storage	7,619	
Telephone	1,408	
Sundry	<u>608</u>	
Total		<u>37,427</u>
NET INCOME		<u>63,489</u>

MEN'S AND WOMEN'S THURSDAY DROP-IN

Current events, past events, future events – actually any kind of an event or topic is discussed with good hearted passion. It's a chance to express your feelings about what you feel concerned about – be it the President, Iraq, gasoline, sex or corporate mergers – good discussion awaits you. The group meets every Thursday from 1-3 PM at the GLCC. This is a good chance to meet other SAGE members and their friends. Out of town visitors are welcomed. *This is a SAGE sponsored activity.* ■

PAID ADVERTISEMENT



3157 W. Hallandale Beach Blvd.
Hallandale, Florida 33009
Telephone (954) 963-0320

My Way Hair Salon

PAID ADVERTISEMENT

TROPICS SIDE|CAR

LUNCH DAILY 11am-3pm
Now with **Tropics Salad Bar & Soup Station**
plus NEW Internet Café!

Sunday Brunch only \$15⁹⁵
Nightly Specials
Entertainment 7 Nights!

Happy Hour
2-for-1 All Brands
SUNDAY-FRIDAY 4-9pm
SATURDAY 4-8pm



TROPICS

Proudly serving South Florida's
Gay & Lesbian Community
since 1994

RESTAURANT
PIANO BAR
CABARET

COMMUNITY
OFFICE
AWARDS
2002, 2003 & 2004
Recipient of the Year

2000 WILTON DRIVE (N.E. 4TH AVENUE) • WILTON MANORS, FL 33305
PH: (954) 537-6000 • FAX: (954) 563-4269 • Dinner Reservations Suggested

SAGE BIRTHDAYS FOR FEBRUARY

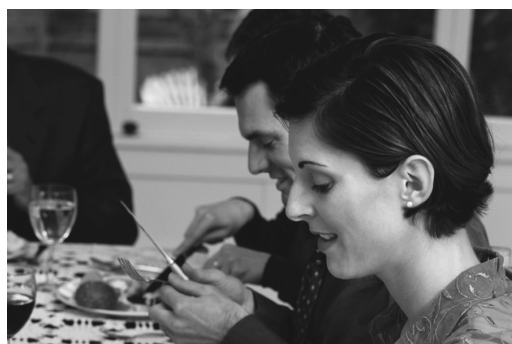
The SAGE Board would like to acknowledge the following members whose birthdays are in FEBRUARY, as well as all the other members whose birthdays are this month that we don't have:

Mel Kuritzky Feb. 04	Joel Tendler Feb. 15
James Smith Feb. 04	Gary Kempler Feb. 18
Larlrly Stodard Feb. 08	Edward Gayton . . . Feb. 23
Godfrey Isaacs Feb. 09	Michael Menichella Feb. 25
Richard Rogers . . . Feb. 09	Robert Greene . . . Feb. 27
Jack Myers Feb. 11	

If, when you renewed your membership or became a new member you did not give us your birthday, you may call the office and leave the information at: (954) 720-0833 or e-mail us at: sageoffice@bellsouth.net

PAID ADVERTISEMENT

So many "Italian style" restaurants...



But only one "authentic" Primavera!

Lake Como, near Milan, is famous for fine Italian cuisine. It's where chef/owner Giacomo perfected his culinary talent. No wonder his menu at Primavera features selections you would only find in Italy, with the freshest ingredients and classic flair. All served with professional attention. Vero Italiano—true Italian! Join us at Primavera, and you'll taste it.

Dinner 7 Nights 5:00-10:00 PM
Reservations suggested
Private room available
For 10 to 150 guests
Lunch or dinner



830 E. Oakland Park Boulevard, Fort Lauderdale
954.564.6363 • www.trueitalian.com

SOCIAL NOTES by Carl M. Galli

This is already an exciting year for your Social Committee, and the year is just two months old! The "season" is upon us and events are filling up fast.

The Italian Night at "Zuckerello's" was a hit with over 30 members enjoying cocktails and great Italian food at one of Ft. Lauderdale's finest restaurants. Our thanks go to **Eli Biton** and his staff for making this possible.

Our Valentine's Dinner and Dance is just around the corner: **Sunday, February 11th**. This will be in the East Room of the "Palm Aire Country Club" overlooking the romantic fountains and fairways. We shook things up a bit this time by adding different menu selections. We've also added a soup du'jour, Chicken Noodle, as an appetizer choice. Please let us know if you'd prefer this to their wonderful stuffed mushrooms. "Eclipse," (the melodious **Kathy and Martha**) will again be performing for our dancing pleasure as they did at our holiday party. This is another opportunity to catch their fabulous act. Please make your reservations now for this great evening.

The March 15th SAGE Rainbow Night "Theatre Trip" is completely sold out! How wonderful to have such positive participation in one of our events! This promises to be an eventful evening with SAGE members mixing and mingling with members of other LGBT groups from throughout south Florida. For those of you sharing this wonderful event, please remember that **boarding of the mini-bus at the GLCC will be between 5:00 and 5:15 PM, with a 5:30 PM SHARP departure time, so don't miss the bus!**

"Happy Valentine's Day" to one and all, you are loved by your SAGE family. ■

DON'T GET "BUGGED" GET YOUR FLU SHOTS

According to the U.S. Centers for Disease Control and Prevention, Florida has experienced "widespread" cases of influenza, but health experts say it's not too late for a flu shot. To find a flu shot, call your doctor's office, a nearby clinic, or check with the county health department.

The Broward County Health Department gives flu shots every Monday and Wednesday.

For details call: 954-467-4943 or visit: www.browardchd.org/Services/Clinics/Schedules/FluSchd.htm.

For details on **the Palm Beach County Health Department** shots call: 211 or visit: www.pbchd.com. ■

PAID ADVERTISEMENTS



ROBIN L. BODIFORD

ATTORNEY AT LAW

WILLS • TRUSTS • PROBATE
REAL ESTATE • BANKRUPTCY

AUTHOR: "Fresh Start Bankruptcy"
& "A Simplified Guide to Creating a Personal Will"
(John Wiley & Sons, 2003)

LAW OFFICES OF ROBIN L. BODIFORD, P.A.
2550 N. FEDERAL HWY., SUITE 20
FORT LAUDERDALE, FLORIDA 33305
www.robinbodifordlaw.com

(954) 630-2707
Fax (954) 630-2706



**Comfort
Keepers**

Comforting Solutions for In-Home Care

Prepare meals	Grocery shop
Run errands	Light housekeeping
Laundry	Respite Care
W-2 employees	24 hour care available

English Speaking Companionship

954-825-0155

www.COMFORTKEEPERS.COM REG.# 228141

PAID ADVERTISEMENTS



Jeffrey Pass, D.D.S.

Cosmetic & Restorative Dentistry

4030 Sheridan Street - Suite B

Hollywood, Florida 33021

Phone: (954) 966-6410

MEN'S SINGLES GROUP

Date: February 26, Monday
Time: 5:30 PM - Cocktails
Dinner: 6:30 PM - Dinner
Purpose: Men Without Partners -- meet other Men Without Partners
Place: Tropics Restaurant, Wilton Manors
Objective: Establish introductions, friendships, eat and have fun.

Join our group, approx. 20-30 guys, for our 44th dinner gathering. (Our first dinner was held in June 2003.) The evening is about friendship, having fun, developing a network of SAGE acquaintances, and looking handsome in your red shirt. *You do not need to be a SAGE member to attend your first dinner.*

Reservations are vital to ensure you have a seat with our group. For reservations or information call the SAGE Message Line at 954-720-0833 or email to: sagesingles@aol.com. **This is a SAGE sponsored activity.** ■

Wayne Morris

"Those who cannot give friendship will rarely receive it, and never hold it."

— Dagobert D. Rumes

BOOK BUNCH NEWS: FEBRUARY

Many gay men, and women for that matter, spent a lot of their youth going to the movies. It was, for most of us, a way to escape the real and darker world for one of fun and fantasy. Many of us sought out our favorite fantasy lovers in darkened theaters in our home towns. The 1950's and 1960's were a time of glamour and fun on screen. The truth behind the camera though was quite different. "The Hollywood Closet" was full and many of the most masculine guys on-screen were quite different off-screen.



This month we look at two views of this time period. One, an autobiographical account entitled "Tab Hunter: Confidential" by the actor, and the other entitled "The Man Who Invented Rock Hudson," the story of Henry Wilson, the Hollywood agent who had a stable of gay clients, the most famous being Rock Hudson.

Join us on February 10 at 2:00 PM at Borders on Sunrise Boulevard in Ft. Lauderdale! All are welcome. **This is a SAGE sponsored activity.** ■

Bob Tomasulo

MEN'S WEDNESDAY DROP-IN

The discussions are always lively on many diverse topics. The social hour, following the discussions, serves as a way to really get to know your fellow members. The group meets every Wednesday at the GLCC from 1-3 PM. Try it. You'll like it. **This is a SAGE sponsored activity.** ■



Law Offices

Arthur B. Smith, P.A.

Galleria Professional Building
915 Middle River Drive, Suite 420
Fort Lauderdale, Florida 33304
Phone: 954-564-8844
Email: ASmith5926@bellsouth.net

Member of the Florida
and Massachusetts Bar

Trusts

Revocable, Irrevocable
and
Charitable Remainder

Wills

Last Will and Testament
and
Related Documents

Probate

Estate and Trust Administration

Real Estate

All Transactions

NOTICE: The hiring of a lawyer is an important decision that should not be based solely on advertisements. Before you decide, ask the attorney to send you free written information about qualifications & experience.

SCOOGINS RESTAURANT

POWERLINE & ATLANTIC - POMPANO BEACH FL 954-973-0660 RESERVATIONS ACCEPTED

SERVING: BREAKFAST-LUNCH-DINNER - SEVEN DAYS

SATURDAY & SUNDAY SPECIAL 11:00-2:30

NOVA PLATTER ONLY \$7.99

WE CUT THE PRICE NOT THE PORTION

**FREE SUN-SENTINEL
EVERYDAY - WHILE THEY LAST!**

FROM...\$2.19

**PANCAKES, FRENCH TOAST,
OMELETS, FARM FRESH
EGGS, & MUCH MORE...**

**DINNER SPECIALS
FROM \$10.99**

LUNCH SPECIALS

LUNCH SERVED - 11:30 - 2:30
- SOUP, SANDWICH & BEVERAGE SPECIALS
- HOT LUNCH PLATES
ONE JUMBO PORK CHOP \$7.99
INCLUDES RELISH BAR AND TWO SIDE DISHES
- RIBS, WINGS, FRIED FISH, PASTA
AND MORE...

**SCOOGINS IS
CONNECTED
FREE
WIRELESS
INTERNET**

**- INCLUDES: SOUP,
SALAD BAR, BEVERAGE
AND DESSERT
SERVED 4:30 - 8:00
PORK CHOPS, NY
STEAKS, PASTA,
SCROD, HADDOCK,
SALMON, VEAL,
CHICKEN, POT ROAST,
BRISKET...**

“SENIOR ACTION IN A GAY ENVIRONMENT”

Dear Folks, Please include a stamped, self-addressed envelope, so we can send you your new MEMBERSHIP CARD. THANK YOU.

NAME: _____

ADDRESS: _____

CITY: _____

STATE: _____

ZIP: _____

HOME PHONE: _____

OFFICE: _____

CELL: _____

E-MAIL ADDRESS: _____

BIRTHDAY: _____

COMMITTEE INTEREST: _____

CIRCLE ONE: RENEWAL NEW MEMBER

PLEASE ENCLOSE A CHECK IN THE AMOUNT OF \$35.00 MADE PAYABLE TO: SAGE OF SOUTH FLORIDA

MAIL TO:
SAGE of South Florida, Inc.
8333 West McNab Road, Suite 239
Tamarac, FL 33321

**SAGE NEEDS YOU!
PLEASE JOIN OR RENEW TODAY**

For additional information, please call the message line: 954-720-0833

PAID ADVERTISEMENT

OPEN DOOR. OPEN MIND.



Dean J. Trantalis
Attorney at Law
2255 Wilton Drive
Wilton Manors, FL 33305

tel: 954.566.2226
fax: 954.566.2248
dean@trantalis.com
www.trantalis.com

Real Estate | Wills and Trusts | Business Transactions

DEAN TRANTALIS

The hiring of a lawyer is an important decision that should not only be based on advertisements. Before you decide, ask the lawyer to send you free written information about their qualifications and experience.

IT'S ELECTION TIME!

You may have thought we were finished with elections at least until next November, but SAGE operates on a different time table (of course we do, we're gay). Those of you who have been longtime members know that each March SAGE holds its Annual Meeting and, bowing to tradition, it will again be at Tropical Acres Restaurant. The date is March 25, 2007.

At this event SAGE members will elect a new Board of Directors. Every paid current member is entitled to vote. In preparation for this we are asking any members who are interested in being a candidate for the SAGE Board to submit a letter of intent to run for the Board accompanied by a one-page resume. All candidates must be members in good standing and letters of intent and resumes must be submitted no later than February 22, 2007 to be accepted. The names of all candidates for the new 2007 Board will be published in the March newsletter. Please contact President Jean Johnson or any Board member for additional information.

Also, at the Annual Meeting any changes to the By-Laws may be voted on. This year the President has established a committee to review the By-Laws and make recommendations for any changes. The committee will then submit these recommendations to the Board for review and, if approved, the membership will vote on them at the Annual Meeting. **Please mark your calendars for this important SAGE event – March 25, 2007.**

If for any reason you will be unable to attend this meeting you can still make your voice heard by submitting to the Board a proxy with your vote. This is important to insure the majority needed to hold the election. Proxy forms will be included in the March newsletter. All proxies should be submitted to the SAGE office in care of Secretary Betty Priscak, by March 23, 2007, the last business day before the Annual Meeting. Once the new Board is elected, the entire Board will meet to elect officers for the coming year. ■

PAID ADVERTISEMENT


BANKERS
LIFE AND CASUALTY COMPANY

We specialize in seniors



Gary Kempler
Senior Trust Advisor
(954) 328-5418

- Medicare Specialist offering:
 - Low Cost Supplements
 - Part D Drug Plans
- Long Term Care
- Life Insurance
- Disability Insurance
- Guaranteed Retirement Investments

JANUARY LUNCHEON AND DONATION PRESENTATION



Presentation of checks from NAGAAA (North American Gay Amateur Athletic Alliance - which held its 2006 Softball World Series in Broward County in August 2006). As part of NAGAAA's week long softball tournament that featured over 200 mens and womens teams from across the nation, there was a series of fundraising events. These fundraising events are designed to benefit gay and lesbian organizations in the community where the tournament was held. We are thankful to have been a recipient of a portion of the donations raised.

As you well know, events of this magnitude like the 2006 World Series could not function without the help of many volunteers. Some SAGE members did participate in the volunteering effort. We thank them for their work and although they did not officially represent SAGE, it sheds a very positive light on our organization and shows that our members care.



Pictured above, the combined Boards of SAGE, NAGAAA and the GLCC.

Mark Hansen, right, performing at the January SAGE Luncheon



Above, members enjoy the January SAGE Luncheon.

PAID ADVERTISEMENT

**Broward's Oldest Steak House
and Seafood Restaurant**

"Since 1949"

OPEN 7 DAYS A WEEK
989-2500

Famous For

CHAR BROILED STEAKS

FRESH SEAFOOD

ITALIAN CUISINE

PRIME RIB

THE ORIGINAL



**Tropical
Aces**

**Service ...
Attentive
Prices ...
Reasonable
Atmosphere ...
Inviting**

Monday through Saturday 4:30 p.m. to 10:00 p.m.
Sunday 3:00 p.m. to 9:00 p.m.

2500 Griffin Road (1/2 mile west of I-95)

★ MUSIC NIGHTLY ★ BANQUET FACILITIES

★ FULL COCKTAIL LOUNGE

PAID ADVERTISEMENT



**ANDREWS
DINER**

"A Family Restaurant"

*Daily Homemade
Lunch and Dinner Specials*

Hours:

Mon., Tues., Wed. 6:00AM - 3:00PM
Thurs., Fri. 6:00AM - 8:00PM
Sat. 6:00AM - 3:00PM
Sun. 7:00AM - 1:30PM

HOSTS: ANGELO, GERRI & MARLA

**2980 N. Andrews Avenue
Fort Lauderdale, Florida 33311
(954) 563-3555**

SAGE MISSION STATEMENT

SAGE of South Florida is a non-profit organization for **Senior Action** in a **Gay Environment** to enrich the lives of the GLBT senior community through membership inclusive of age, gender, race, nationality and religion. We believe this can be accomplished by sponsoring social alternatives to provide personal interaction, offering educational opportunities to deal with the special needs of aging, and promoting contact with the isolated and homebound persons of our community. **SAGE** is also an advocate for the concerns and needs of the senior GLBT community at large, providing referral information of community resources and promoting inter-generational communication in the GLBT community.

SAGE was founded in 1994 as a Florida "not for profit" Corporation. (Federal Tax-Exempt status of 501(c)3 allowing tax-deductible donations). ■

PAID ADVERTISEMENT



FRED HUNTER'S

SINCE 1890
FUNERAL SERVICE • CREMATION • CEMETERIES

**718 S. FEDERAL HIGHWAY, FORT LAUDERDALE
FRANK CAMPAILLA, MANAGING DIRECTOR**

**6301 TAFT STREET, HOLLYWOOD, FLORIDA
MARK VAN REES, MANAGING DIRECTOR**

**2401 S. UNIVERSITY DRIVE, DAVIE, FLORIDA
SCOTT CUMMING, MANAGING DIRECTOR**

**FAMILY OWNED AND OPERATED
FUNERAL HOMES IN FORT LAUDERDALE,
HOLLYWOOD, DAVIE/COOPER CITY, AND MIRAMAR**

**AND
HOLLYWOOD MEMORIAL GARDENS CEMETERY**

**HOLLYWOOD, FLORIDA
954-527-1550**

WWW.FREDHUNTERS.COM

SAGE 3 Month Calendar of Events FEBRUARY thru APRIL 2007

February	Sat 3 rd	Board Meeting 9:00AM SOCIAL/LUNCH 12:30-2PM at Herb Skolnick Community Center-Palm Air 800 SW 36th Ave.	
	Sun	Bereavement Group 2PM GLCC (Every Sunday)	
	Wed	Men's Drop-in 1PM GLCC (Every Wednesday)	
	Thurs	Co-ed Drop-in 1PM GLCC (Every Thursday)	
	Sat 10 th	Book Bunch -2PM –Borders	
	Sun Feb 11th	Valentines Party -5PM Palm Aire Country Club – <u>Reservations close Thurs 2/8</u>	
	Tues 13	Computer Club-Sunshine Cathedral-Light University-Purple Classroom Contact Ken for details (954) 720-0833	
	Wed 14th	Shirley's Girls 12:00 Noon – Lunch at Jean Arthurton's house	
	Mon 19th	SAGE Movie 4PM -GLCC – "Hedwig and the Angry Inch" - Followed by dinner :TBA	
	Tues 20th	Women in Action 1:00 PM–Movie/Lunch/Discussion Bunch Place: TBA Call Sandy for details: (305) 895-9461	
	Mon 26th	Men's Singles at Tropics 6:30 PM	
	Tues 27	Computer Club-Sunshine Cathedral-Light University-Purple Classroom Contact Ken for details (954) 720-0833	
	March	Sat 3 rd	Board Meeting 9:00AM SOCIAL/LUNCH 12:30PM at Herb Skolnick Community Center-Palm Air 800 SW 36th Ave.
		Sun	Bereavement Group 2PM GLCC (Every Sunday)
Wed		Men's Drop-in 1PM GLCC(Every Wednesday)	
Thurs		Co-ed Drop-in -1PM GLCC (Every Thursday)	
Sat 10th		Book Bunch -2PM -Borders	
Sat-Sun 10th-11th		SAGE Booth at "PrideFest 2007"–Holiday Park/War Memorial Auditorium -12PM	
Tues 13		Computer Club-Sunshine Cathedral-Light University-Purple Classroom Contact Ken for details (954) 720-0833	
Wed 14th		Shirley's Girls 12:00 Noon – Lunch at the Ark Restaurant. Contact Ann Smith (561) 276-2346	
Thurs 15 th		Theatre: "La Cage aux Folles" arrive at GLCC for bus no later than 5:15PM – SOLD OUT	
Mon 19 th		SAGE Movie 4PM –GLCC "Bad Education" - Followed by dinner: TBA	
Tues 20th		Women in Action 1:00 PM – Movie/Lunch/Discussion Bunch – Place: TBA Call Sandy for details: (305) 895-9461	

(continued on other side)

SAGE 3 Month Calendar of Events FEBRUARY thru APRIL 2007

	Sun 25 th	Annual Meeting/Luncheon 1PM –Tropical Acres – <i>Reservations close Thurs 3/13</i>
	Mon 26th	Men's Singles at Tropics 6:30 PM
	Tues 27	Computer Club-Sunshine Cathedral-Light University-Purple Classroom Contact Ken for details (954) 720-0833
	Fri-Sat 30th-31st	SAGE-sponsored Pit Stop at "SmartRide 2007" –Miami- Key West –Contact John for details: (954)-972-2366 "
April	Sat 7 th	Board Meeting 9:00AM SOCIAL/LUNCH 12:30PM at Herb Skolnick Community Center-Palm Air 800 SW 36th Ave.
	Sun	Bereavement Group 2PM GLCC (Every Sunday)
	Wed	Men's Drop-in 1PM GLCC (Every Wednesday)
	Thurs	Co-ed Drop-in 1PM GLCC (Every Thursday)
	Tues 10	Computer Club-Sunshine Cathedral-Light University-Purple Classroom Contact Ken for details (954) 720-0833
	Wed 11th	Shirley's Girls 12:00 Noon – Lunch at Anne Smith's house. Contact Anne at (561)276-2346
	Sat 13 th	Book Bunch -2PM -Borders
	Mon 16th	SAGE Movie 4PM -GLCC – "Flash Gordon" Followed by dinner.
	Tues 17th	Women in Action 1:00 PM – Movie/Lunch/Discussion Bunch – Place: TBA Call Sandy for details: (305) 895-9461
	Mon 23rd	Men's Singles at Tropics 6:30 PM
	Tues 24	Computer Club-Sunshine Cathedral-Light University-Purple Classroom Contact Ken for details (954) 720-0833
	Sat 28th	SAGE PICNIC at TY Park, details to follow.

(continued on other side)

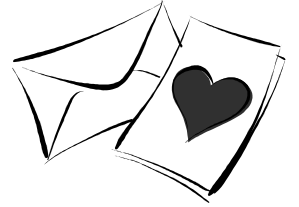
"LOVE IS IN THE AIR"

SAGE presents its **SAINT VALENTINE'S DAY PARTY and DANCE**
SUNDAY, FEBRUARY 11, 2007

at the BEAUTIFUL PALM AIRE COUNTRY CLUB -EAST ROOM
(off POWERLINE ROAD and PALM AIRE DRIVE, Pompano beach, FL 33069)
ROMANTIC VIEWS of the GOLF COURSE and FOUNTAINS



SEATING: 4:30-5:00PM
DINNER TIME: 5PM-8PM



CASH BAR open BEFORE and DURING
DANCING is ENCOURAGED!

MUSIC, for your listening and dancing pleasure, by "ECLIPSE"

GRAND MENU
APPETIZER:

STUFFED MUSHROOMS atop an ENGLISH MUSTARD SAUCE (or, if you prefer, CHICKEN NOODLE SOUP -you must let the SAGE office know ahead of time if you want this option)
BREAD and BUTTER BASKET

SALAD:

FIELD GREENS with MANDARIN ORANGES, SLICED MUSHROOMS, and BERMUDA ONIONS,
with a CITRUS VINAIGRETTE

ENTREE: CHOICE of ONE:

- 1) FILET MIGNON and GRILLED SHRIMP BROCHETTE
- 2) BROILED RED SNAPPER FILET with MANGO SALSA
- 3) BROILED BREAST of CHICKEN STUFFED with APPLES, ALMONDS and WHITE RAISINS
(all with appropriate accompaniments)

DESSERT: CHOICE of ONE:

- 1) PEACH MELBA
- 2) SUGAR-FREE SELECTION du JOUR

BEVERAGES: CHOICE of NON-ALCOHOLIC DRINKS:
COFFEE, ICED TEA, SELECTION of HERBAL TEAS, DIET SODA

PRICING: MEMBERS: \$27.00 _____ NON-MEMBERS: \$30.00 _____

IMPORTANT: PAID RESERVATIONS MUST BE RECEIVED

BY the SAGE OFFICE NO LATER THAN THURSDAY, 02/08/2007*****



(THERE IS NO GUARANTEE of A WAIT-LIST -or THAT SEATS WILL BE AVAILABLE at the DOOR.
IF THEY ARE, THE COST IS \$10.00 ADDITIONAL PER PERSON)

SAGE VALETINE'S PARTY

_____ Members @ \$27.00 _____ Non-Members @ \$30.00 My Phone #: _____

Name: _____ Select One: ___ Beef & Shrimp ___ Chicken ___ Fish

Name: _____ Select One: ___ Beef & Shrimp ___ Chicken ___ Fish

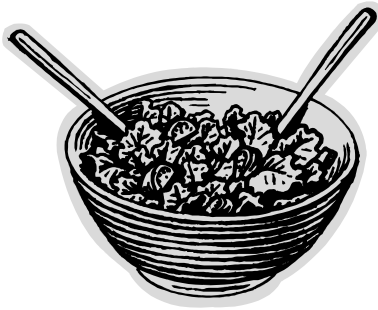
Name: _____ Select One: ___ Beef & Shrimp ___ Chicken ___ Fish

Name: _____ Select One: ___ Beef & Shrimp ___ Chicken ___ Fish

Mail to SAGE. at 8333 West McNab Road, Suite 239, Tamarac, FL 33321

Questions, call the SAGE office at (954) 720-0833

A SAGE Sponsored Activity



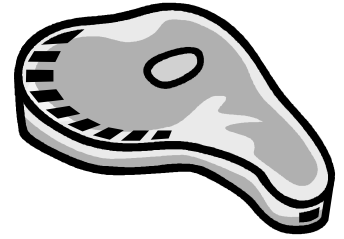
SAGE ANNUAL MEETING & LUNCHEON

Sunday, March 25, 2007

TROPICAL ACRES

2500 Griffin Rd., Ft. Lauderdale, FL.33312

Tel: (954) 989-2500



Seating: 12:45PM-1:15PM

ENTERTAINMENT by
the FABULOUS MADAM of "MADAMES", the LEGENDARY **ELECTRA**!!!!!!

Dining: 2PM-4PM

GRAND MENU

APPETIZER COURSE:

FRENCH ONION SOUP aux Gratinee

followed by **CAESAR SALAD**

ENTREE: (Choice of one)

PRIME RIB of BEEF * CHICKEN FRANCAISE * BAKED BOSTON SCROD
Accompanied by: **CALIFORNIA VEGETABLE MEDLEY & STUFFED BAKED POTATO**

COFFEE, TEA, or ICED TEA

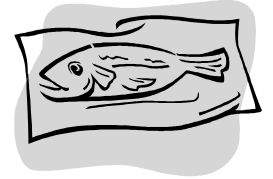
DESSERT:

BLACK FOREST CAKE

MEETING: 3PM-4PM

with Mistress of Ceremonies: **ELECTRA**

PRICING: \$27.00 Members _____ \$30.00 Non-Members _____



*****Cut-off for paid reservations: Tuesday, March 13th. (Or prior, if we reach capacity before then.)
We strongly suggest that you make your reservations now, as this looks to be another sell-out.*****

SAGE ANNUAL MEETING

_____ Members @ \$27.00 _____ Non-Members @ \$30.00 My Phone #: _____

Name: _____ Select One: ___Prime Rib of Beef___ Chicken ___ Fish

Name: _____ Select One: ___Prime Rib of Beef___ Chicken ___ Fish

Name: _____ Select One: ___Prime Rib of Beef___ Chicken ___ Fish

Name: _____ Select One: ___Prime Rib of Beef___ Chicken ___ Fish

Mail to SAGE. at 8333 West McNab Road, Suite 239, Tamarac, FL 33321

Questions, call the SAGE office at (954) 720-0833

A SAGE Sponsored Activity